

PRODUCT INFORMATION PACKET



Model No: B586
Catalog No: B586

General Purpose Farm Duty Motor, 1.0 HP, 1 Ph, 60 Hz, 208-230 V, 3600 RPM, L56HCZ Frame, TENV



Regal and Century are trademarks of Regal Rexnord Corporation or one of its affiliated companies.
©2023 Regal Rexnord Corporation, All Rights Reserved. MC017097E





Nameplate Specifications

Phase	1	Output HP	1.0 Hp
Output KW	0.75 kW	Voltage	208-230 V
Speed	3450 rpm	Service Factor	1.00
Frame	L56HCZ	Enclosure	Totally Enclosed Non Ventilated
Thermal Protection	Thermally Protected	Ambient Temperature	40 °C
Frequency	60 Hz	Current	4.8-4.5 A
Duty	Continuous	Insulation Class	B
UL	Recognized	CSA	Y
CE	N	Number of Speeds	1

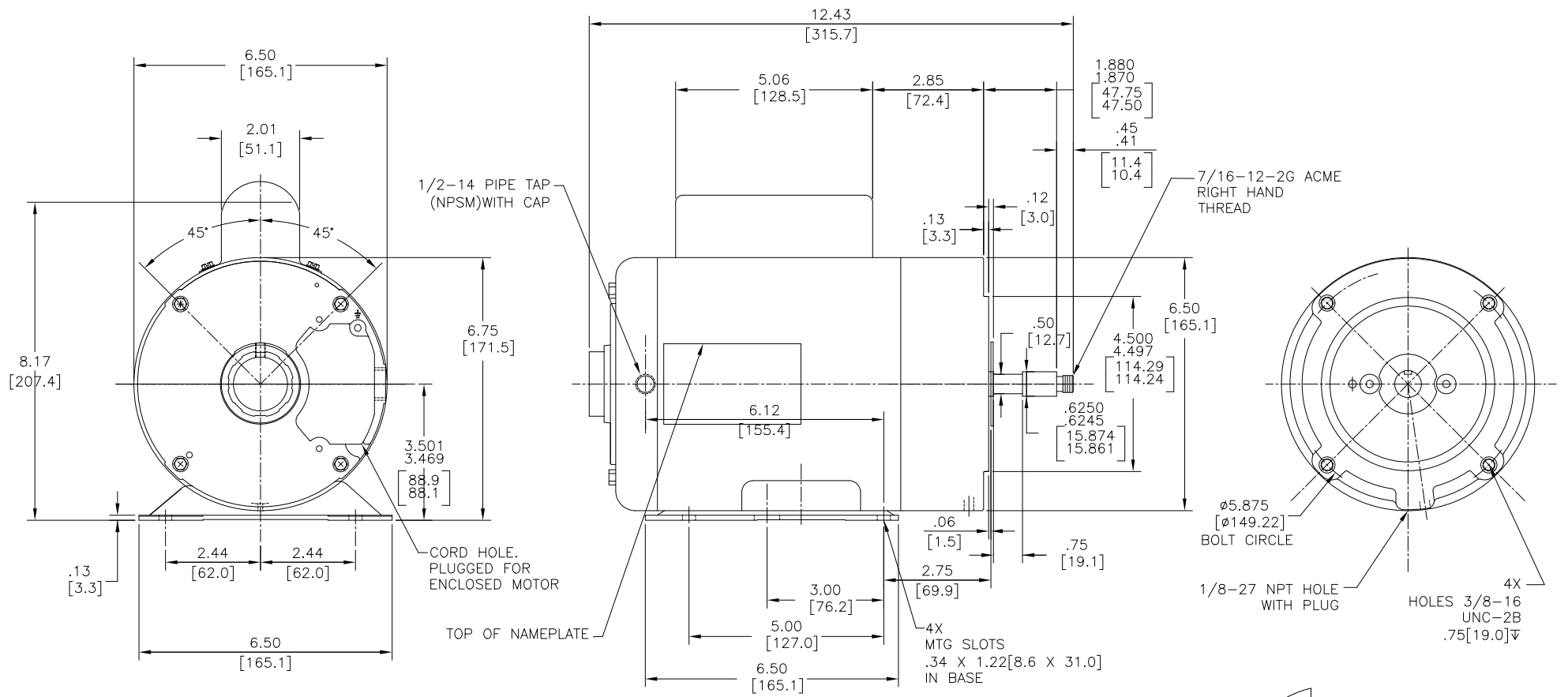
Technical Specifications

Electrical Type	Permanent Split Capacitor, Single Or Dual Voltage	Starting Method	Across The Line
Poles	2	Rotation	Clockwise
Mounting	Rigid Base	Drive End Bearing	Ball
Opp Drive End Bearing	Ball	Frame Material	Rolled Steel
Shaft Type	Threaded	Overall Length	12.43 in
Frame Length	6.25 in	Shaft Diameter	0.625 in
Shaft Extension	2.33 in		
Connection Drawing	17050323.PCX	Outline Drawing	B586-S01

This is an uncontrolled document once printed or downloaded and is subject to change without notice. Date Created:09/27/2023

REV	ECO	REV BY	DATE	APPD	DATE
C	ECR-0211003	D.SURYAWANSHI	07/13/2021	.	.

TYPE: CX
 FRAME: L56HCZ
 FORM: K



- NOTES:
1. RABBET DIAMETER IS CONCENTRIC WITH SHAFT ϕ WITHIN .004[.10] T.I.R.
 2. FACE OF MOUNTING FLANGED IS PERPENDICULAR TO SHAFT ϕ .004[.10] T.I.R.
 3. SHAFT RUNOUT NOT TO EXCEED .002[.05] T.I.R.
 4. FOR RIGID BASE ONLY: THE 2 BOTTOM HOLES IN THE MOUNTING FLANGE ARE EQUIDISTANT FROM THE BOTTOM OF THE FEET WITHIN .030[.8]
 5. ECCENTRICITY OF TREADED PORTION TO BE HELD WITH .004[.10] GAUGE READING WITH INDICATOR ON O.D. OF GROUND RING.

AFTER FINAL ASSEMBLY
 MACHINE NEMA C FACE SO
 THE DIMENSION FROM THE FACE OF THE
 CUSTOMER PILOT TO SHAFT SHOULDER
 1S 1.870/1.880[47.50/47.75]

SHAFT SEAL W/LIP FACING TOWARD
 OUTSIDE OF MOTOR
 (BOTH ENDS WHEN REQ'D)

DETAIL "A"

GEOMETRIC CHARACTERISTICS & SYMBOLS ▭ FLATNESS — STRAIGHTNESS ∠ ANGULARITY ⊥ PERPENDICULARITY (SQUARENESS) // PARALLELISM ○ ROUNDNESS (CIRCULARITY) ∅ CYLINDRICITY ▽ PROFILE OF ANY SURFACE ∩ PROFILE OF ANY LINE ? RUNOUT ⊕ TRUE POSITION ⊗ CONCENTRICITY = SYMMETRY ASME Y14.5M 1994	UNLESS OTHERWISE SPECIFIED DIM. TOLERANCES ARE AS FOLLOWS: INCH .1 ±.02 ±.005 ±.0005 mm ±0.5 ±0.13 ±0.013 ANG. ±.50 DEG REMOVE BURRS & BREAK SHARP EDGES: INCH .003-.015 mm 0.1-0.4 CORNER FILLETS TO: INCH .020 mm 0.5 MACHINE SURFACES: INCH 125 mm 3.2 METRIC DIMS. SHOWN IN [BRACKETS]	DR BY: G.Rodriguez	05-16-2011		DESCRIPTION MODEL-CFHP-56FR OUTLINE
		APPD: T.Reyes	05-16-2011		
THIRD ANGLE PROJECTION				CONFIDENTIAL: THIS DRAWING AND ITS INFORMATION ARE THE EXCLUSIVE AND CONFIDENTIAL PROPERTY OF REGAL-BELOIT CORPORATION AND ARE NOT TO BE DISCLOSED, DUPLICATED, DISTRIBUTED OR OTHERWISE USED WITHOUT THE WRITTEN CONSENT OF REGAL-BELOIT CORPORATION. -ALL RIGHTS RESERVED.	
SCALE NONE				SHEET 1	