

PRODUCT INFORMATION PACKET



Model No: B598
Catalog No: B598

General Purpose Farm Duty Motor, 3/4 HP, 3 Ph, 60 Hz, 208-230 V, 3600 RPM, L56HCZ Frame, TENV



Regal and Century are trademarks of Regal Rexnord Corporation or one of its affiliated companies.
©2022 Regal Rexnord Corporation, All Rights Reserved. MC017097E





Nameplate Specifications

Output HP	3/4 Hp	Output KW	0.56 kW
Frequency	60 Hz	Voltage	208-230 V
Current	2.5-2.4 A	Speed	3450 rpm
Service Factor	1	Phase	3
Duty	Continuous	Insulation Class	B
Frame	L56HCZ	Enclosure	Totally Enclosed Non Ventilated
Thermal Protection	Thermally Protected	Ambient Temperature	40 °C
UL	Recognized	CSA	Y
CE	N	Number of Speeds	1

Technical Specifications

Electrical Type	Polyphase	Starting Method	Across The Line
Poles	2	Rotation	Reversible
Mounting	Rigid Base	Drive End Bearing	Ball
Opp Drive End Bearing	Ball	Frame Material	Rolled Steel
Shaft Type	Keyed	Overall Length	12.20 in
Frame Length	6.25 in	Shaft Diameter	0.625 in
Shaft Extension	1.88 in		
Outline Drawing	B598-S01	Connection Drawing	17050814

This is an uncontrolled document once printed or downloaded and is subject to change without notice. Date Created:11/28/2022

4

3

2

1

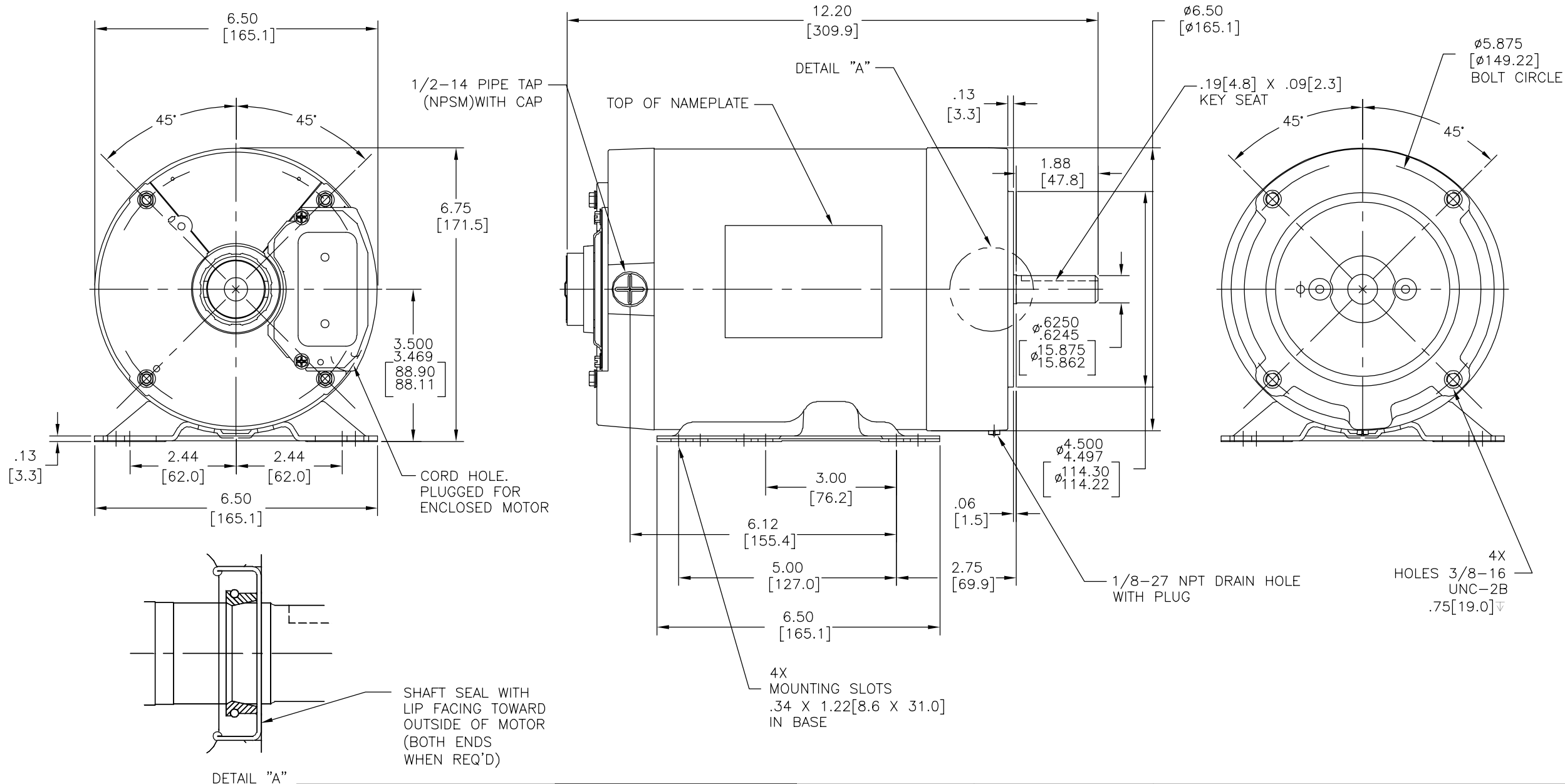
NOTES:

1. RABBET DIAMETER IS CONCENTRIC WITH SHAFT \pm WITHIN .004[.10] T.I.R.
2. FACE OF MOUNTING FLANGED IS PERPENDICULAR TO SHAFT \pm .004[.10] T.I.R.
3. SHAFT RUNOUT NOT TO EXCEED .002[.05] T.I.R.
4. FOR RIGID BASE ONLY: THE 2 BOTTOM HOLES IN THE MOUNTING FLANGE ARE EQUIDISTANT FROM THE BOTTOM OF THE FEET WITHIN .030[.8]
5. ECCENTRICITY OF TREADED PORTION TO BE HELD WITH .004[.10] GAUGE READING WITH INDICATOR ON O.D. OF GROUND RING.

REV	ECO	REV BY	DATE	APPD	DATE
A	0025295	J.MENA	04-18-2012	H.SANCHEZ	04-18-2012

ALL DIMENSION SHOWN IN PARENTHESIS ARE REFERENCE DIMENSIONS. ALL OTHER DIMENSIONS ARE TOLERANCED PER THE FOLLOWING CHART UNLESS OTHERWISE SPECIFIED.

OVERALL LENGTH	= \pm .055[1.40]
SHAFT EXT.	= \pm .034[.86]
LEAD LENGTHS	= \pm 1.00[25.4]
EXTENDED THRU BOLTS	= \pm .050[1.27]
ANGULAR DIMENSIONS	= \pm 2'



GEOMETRIC CHARACTERISTICS & SYMBOLS

- FLATNESS
- STRAIGHTNESS
- ANGULARITY
- PERPENDICULARITY (SQUARENESS)
- PARALLELISM
- ROUNDNESS (CIRCULARITY)
- CYLINDRICITY
- PROFILE OF ANY SURFACE
- PROFILE OF ANY LINE
- RUNOUT
- TRUE POSITION
- CONCENTRICITY
- SYMMETRY

ASME Y14.5M 1994

UNLESS OTHERWISE SPECIFIED DIM. TOLERANCES ARE AS FOLLOWS:

INCH	\pm .1	\pm .02	\pm .005	\pm .0005
mm	\pm 0.5	\pm 0.13	\pm 0.013	

ANG. \pm .50 DEG
REMOVE BURRS & BREAK SHARP EDGES:
INCH .003-.015 mm 0.1-0.4
CORNER FILLETS TO:
INCH .020 mm 0.5
MACHINE SURFACES:
INCH 125 mm 3.2
METRIC DIMS. SHOWN IN [BRACKETS]

DR BY: J.MENA 04-18-2012

APPD: T.YANG 04-18-2012

THIRD ANGLE PROJECTION

EDS DATE 11-11-2011
FORMAT REV G

CONFIDENTIAL: THIS DRAWING AND ITS INFORMATION ARE THE EXCLUSIVE AND CONFIDENTIAL PROPERTY OF REGAL-BELOIT CORPORATION AND ARE NOT TO BE DISCLOSED, DUPLICATED, DISTRIBUTED OR OTHERWISE USED WITHOUT THE WRITTEN CONSENT OF REGAL-BELOIT CORPORATION. -ALL RIGHTS RESERVED.

REGAL-BELOIT CORPORATION

DESCRIPTION: MODEL-PFHP-56FR OUTLINE

SIZE: C DWG NO: B598

SCALE: NONE SHEET: 1

4

3

2

1

4

3

2

1

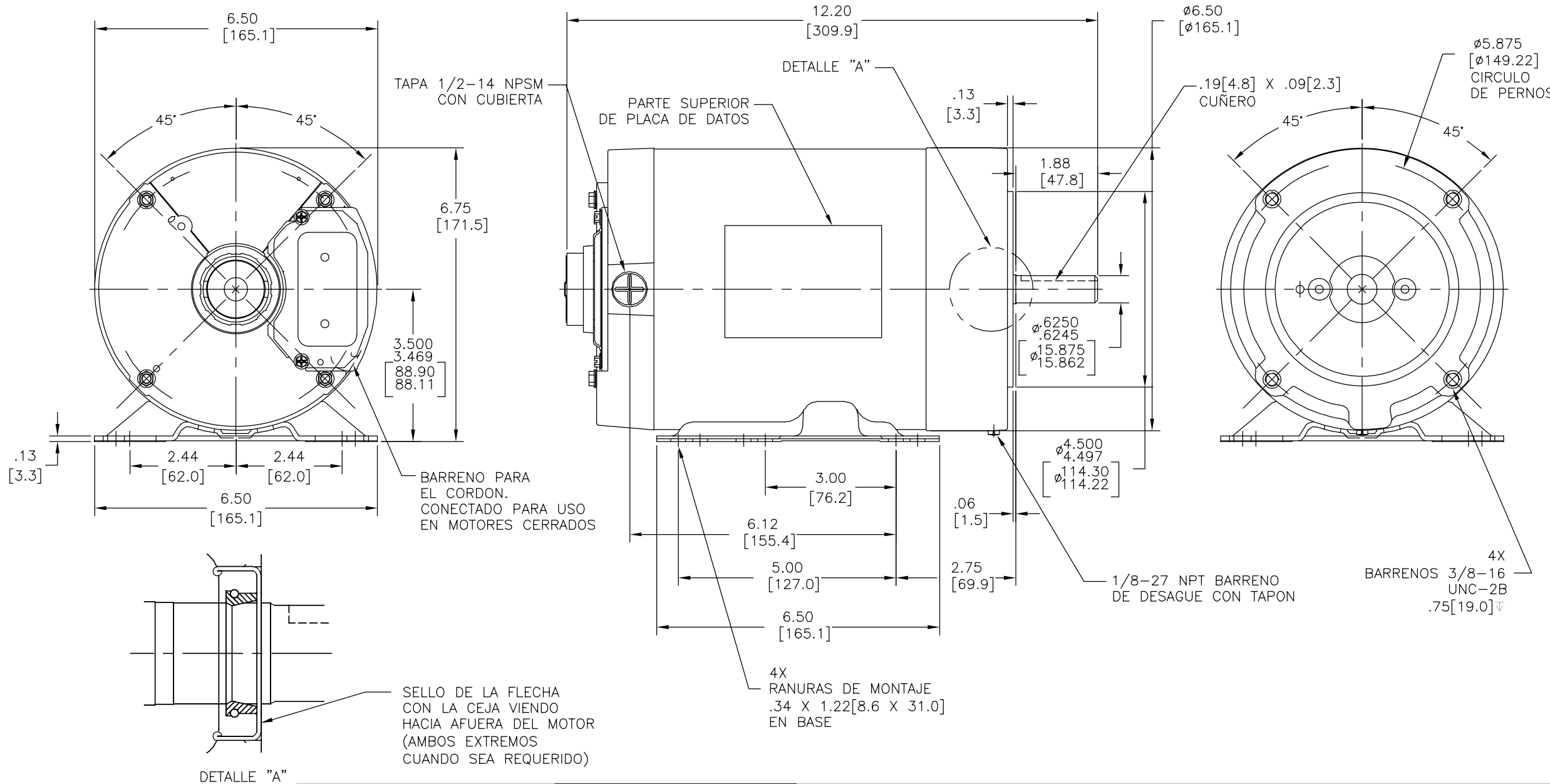
NOTAS:

1. RECESO DEL DIAMETRO ES CONCENTRICO CON LA FLECHA \perp ENTRE .004[.10] T.I.R.
2. EL BORDE DE LA CARA DEL MONTAJE ES PERPENDICULAR A LA FLECHA \perp .004[.10] T.I.R.
3. LA OSCILACION DE LA FLECHA NO DEBE EXCEDER .002[.05] T.I.R.
4. SOLO PARA BASE RIGIDA: LOS 2 BARRENOS DEL BORDE INFERIOR DEL MONTAJE SON EQUIDISTANTES DE EL FONDO DEL PIE ENTRE .030[.8]
5. EXCENTRICIDAD DE LA PORSION DE LA ROSCA ESTA SOSTENIDA CON UN INDICADOR .004[.10] LECTURA CON INDICADOR EN DIAMETRO EXTERIOR DE ANILLO A TIERRA.

REVISION:	ECO	REVISADO POR:	FECHA:	APROBADO POR:	FECHA:
A	0025295	J.MENA	04-18-2012	H.SANCHEZ	04-18-2012

TODAS LAS DIMENSIONES MOSTRADAS EN PARENTESIS SON DE REFERENCIA, EL RESTO LLEVAN TOLERANCIA SEGUN LA SIGUIENTE TABLA, A MENOS QUE OTRA COSA SEA ESPECIFICADA.

DIMENSION TOTAL	= \pm .055[1.40]
EXTENSION DE FLECHA	= \pm .034[.86]
LONGITUD DE CALES	= \pm 1.00[25.4]
TORNILLOS PASADOS	= \pm .050[1.27]
DIMENSIONES ANGULARES	= \pm 2'



CARACTERISTICAS DE GEOMETRIA Y SIMBOLOS

- PLANICIDAD
- RECTITUD
- ∠ ANGULARIDAD
- ⊥ PERPENDICULARIDAD (A ESCUADRA)
- // PARALELISMO
- REDONDEZ (CIRCULARIDAD)
- ⊘ CILINDRICIDAD
- △ PERFIL DE CUALQUIER SUPERFICIE
- ∧ PERFIL DE CUALQUIER LINEA
- ∧ VARIACION
- ⊕ POSICION REAL
- ⊙ CONCENTRICIDAD
- = SIMETRIA

ASME Y14.5M 1994

A MENOS QUE SE ESPECIFIQUE DE OTRA MANERA, LAS TOLERANCIAS DE LAS DIMS; SON LAS SIGUIENTES:

PULG	±.1	±.02	±.005	±.0005
mm	±0.5	±0.13	±0.013	±0.013

ANG. \pm 50 GRADOS
ELIMINAR REBABAS Y ORILLAS FILOSAS DEL BORDE.
PULG .003-.015 mm 0.1-0.4
FILETEAR ESQUINA: PULG .020 mm 0.5
MAQUINAR SUPERFICIES
PULG 125 mm .32

DIMS METRICAS MOSTRADAS [PARENTESIS]

DIBUJADO POR:	J.MENA	04-18-2012
APROBADO POR:	T.YANG	04-18-2012
TERCER ANGULO DE PROYECCION	⊕	FECHA EDS: 11-11-2011 REV. FORMATO: G
CONFIDENCIAL: ESTE DIBUJO Y SU INFORMACION SON PROPIEDAD DE USO EXCLUSIVO Y CONFIDENCIAL DE REGAL-BELOIT CORPORATION. Y NO DEBERAN SER REVELADOS, DUPLICADOS, DISTRIBUIDOS O USARSE DE OTRA MANERA SIN EL CONSENTIMIENTO ESCRITO DE REGAL-BELOIT CORPORATION. -TODOS LOS DERECHOS RESERVADOS.		

DESCRIPCION: MODEL-PFHP-56FR OUTLINE	
TAMAÑO: C	NUMERO DE DIBUJO: B598
ESCALA: NONE	HOJA: 1

4

3

2

1

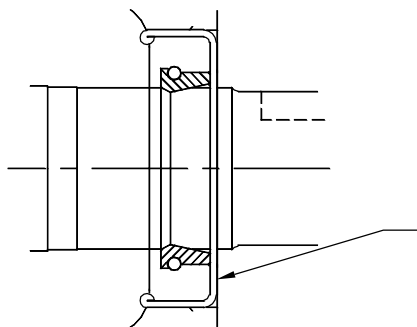
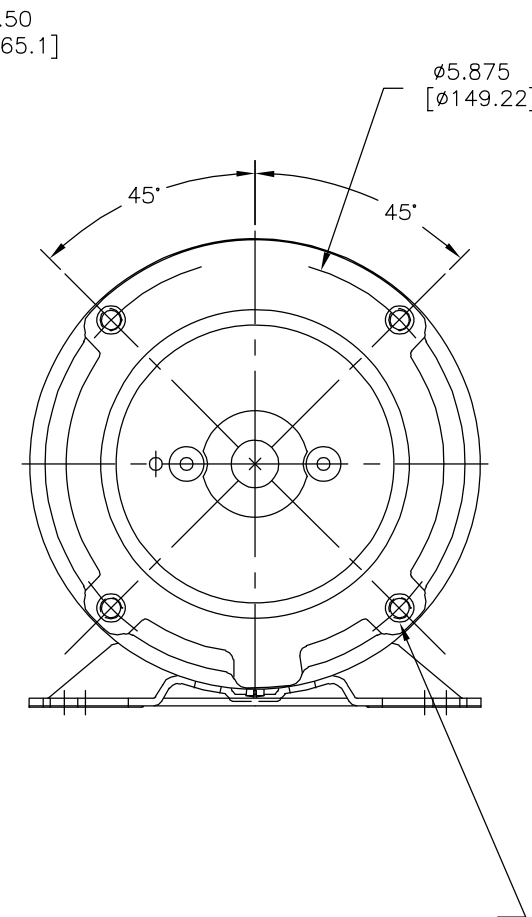
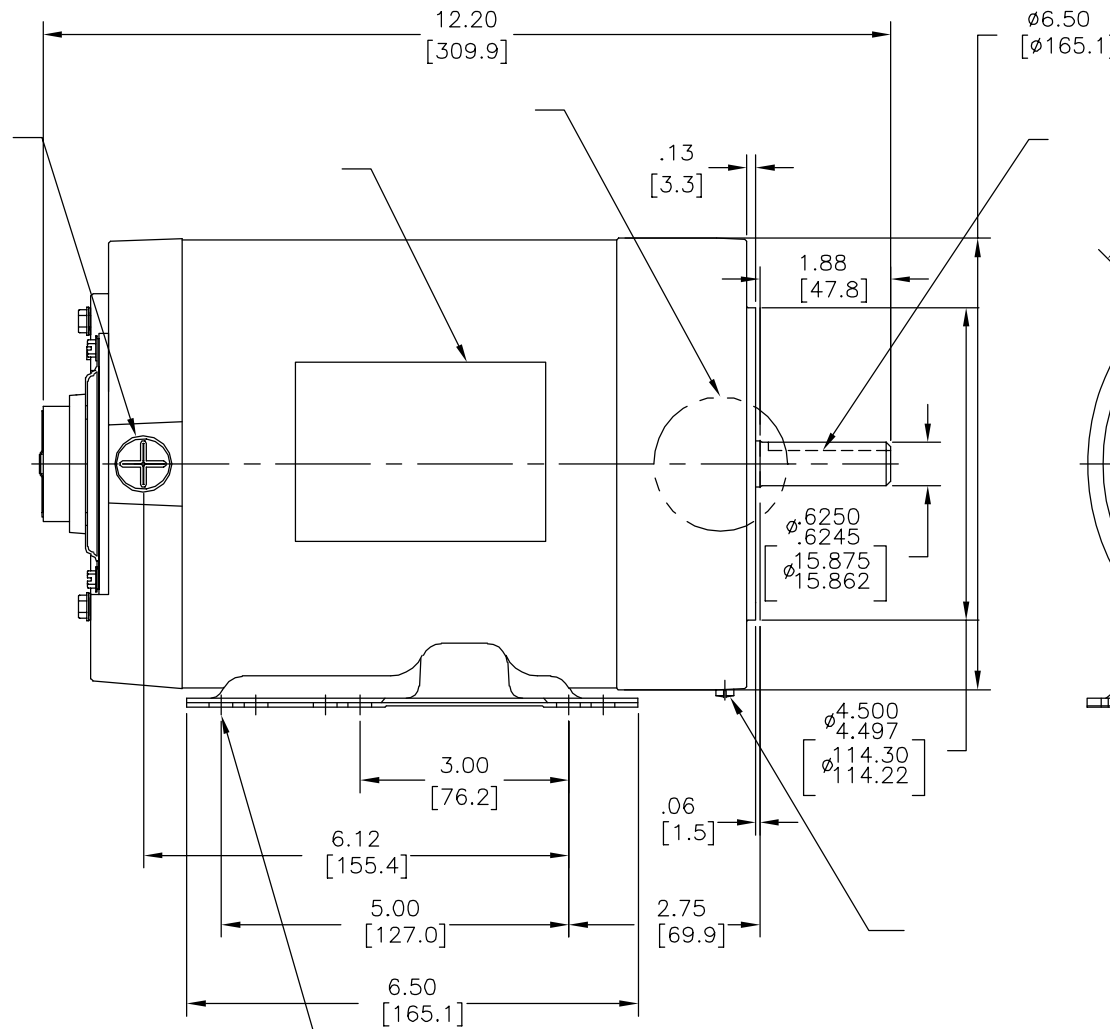
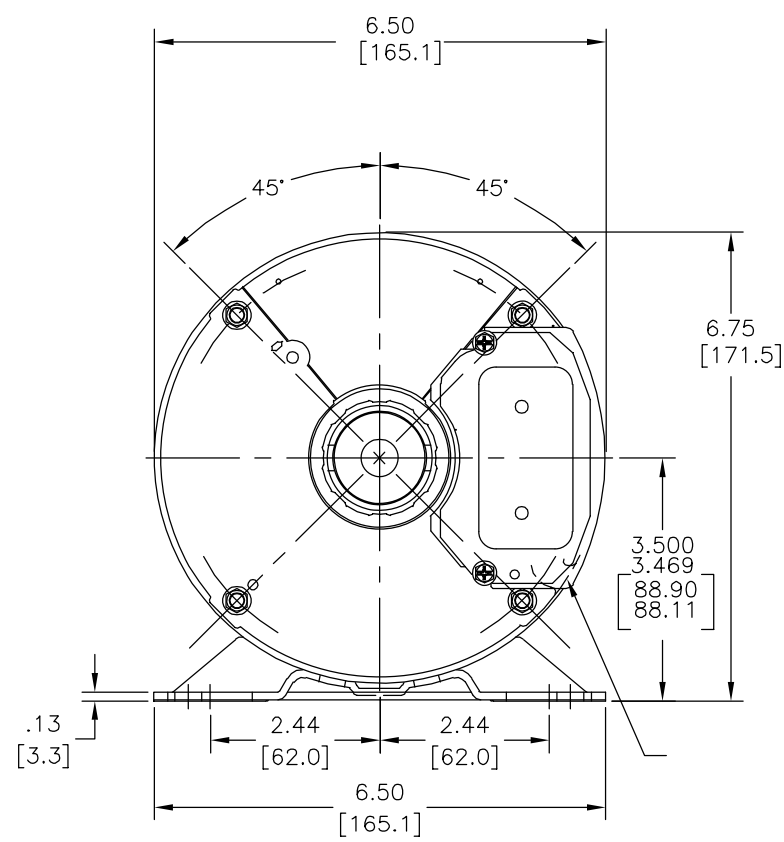
4

3

2

1

版本	ECO	编制	日期	批准	日期
A	0025295	J.MENA	04-18-2012	H.SANCHEZ	04-18-2012



- 形位公差
- 平面度
- 直线度
- ∠ 倾斜度
- ⊥ 垂直度
- // 平行度
- 圆度
- ⊘ 圆柱度
- △ 面轮廓度
- ⌒ 线轮廓度
- ↗ 圆跳动
- ⊕ 位置度
- ⊙ 同轴度
- ≡ 对称度

ASME Y14.5M 1994

除另有注明
尺寸公差如下:
英寸 X XX XXX XXXX
毫米 ±0.1 ±0.02 ±0.005 ±0.0005
毫米 ±0.5 ±0.13 ±0.013
角度 ±.50 度
清理毛刺和尖棱
英寸 .003-.015 毫米 0.1-0.4
内圆角
英寸 .020 毫米 0.5
表面粗糙度
英制 125 米制 3.2
米制尺寸显示在 []

绘图:	J.MENA	04-18-2012
批准:	T.YANG	04-18-2012
第三角投影		图纸格式发布日期 11-11-2011 图纸格式版本 G
机密: 本图纸及相关信息所有权归REGAL-BELOIT CORPORATION 未经REGAL-BELOIT CORPORATION书面授权, 不得泄露、 复制、传播或作其他用途。—版权所有		

名称 MODEL-PFHP-56FR OUTLINE	
图幅 C	图号 B598
比例 NONE	页号 1

4

3

2

1