

PRODUCT INFORMATION PACKET



Model No: B734ES
Catalog No: B734ES
2 HP General Purpose Motor, 1 phase, 3600 RPM, 115/230 V, 56H Frame, ODP
General Purpose Motors



Regal and Century are trademarks of Regal Rexnord Corporation or one of its affiliated companies.
©2021 Regal Rexnord Corporation, All Rights Reserved. MC017097E





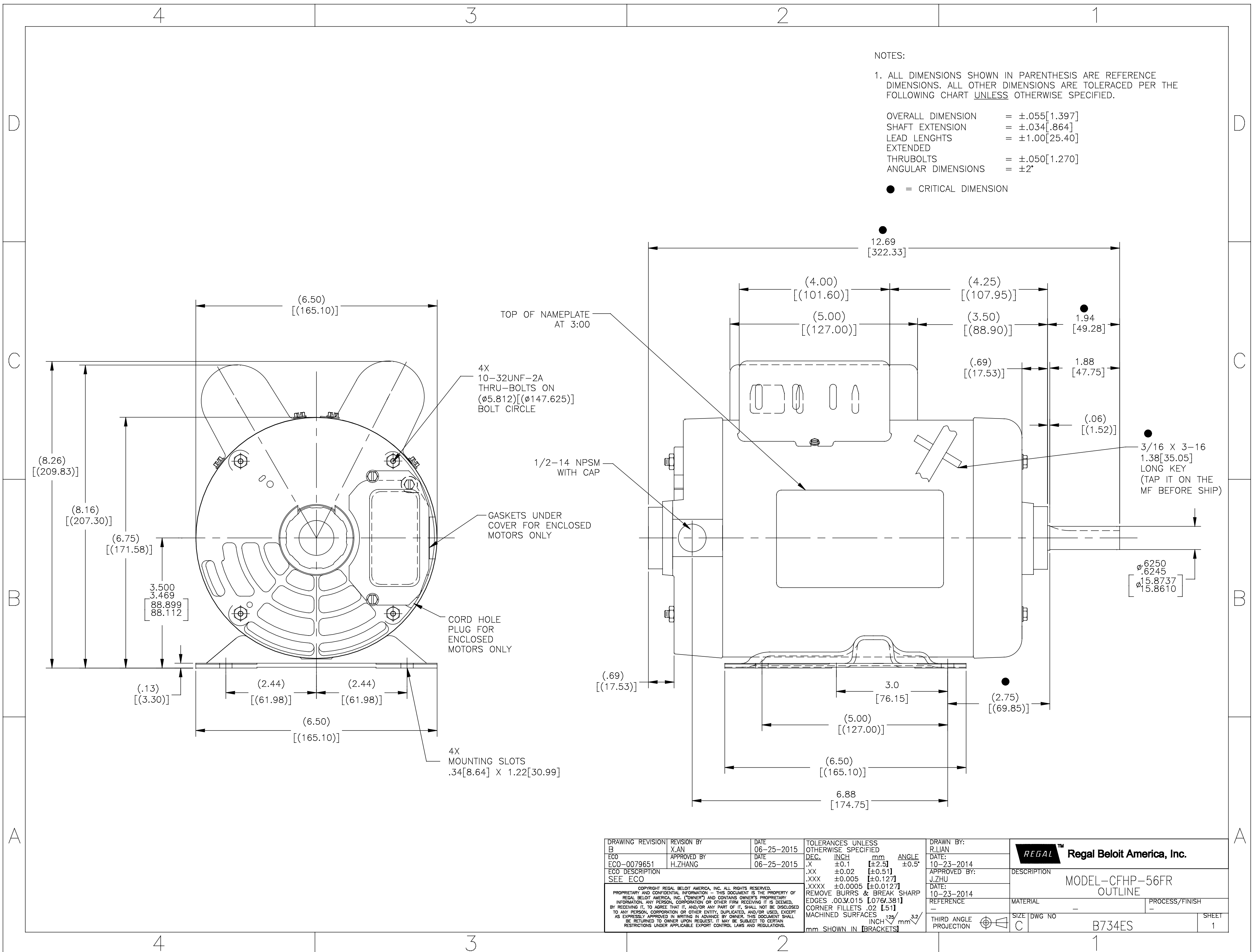
Nameplate Specifications

Output HP	2 Hp	Output KW	1.5 kW
Frequency	60 Hz	Voltage	115/230 V
Current	17.8/8.9 A	Speed	3450 rpm
Service Factor	1.2	Phase	1
Duty	Continuous	Insulation Class	B
Frame	56H	Enclosure	Open Drip Proof
Thermal Protection	None	Ambient Temperature	40 °C
UL	Recognized	CSA	Y
CE	Y	Number of Speeds	1

Technical Specifications

Electrical Type	Capacitor Start, Induction Run, Single Or Dual Voltage	Starting Method	Across The Line
Poles	2	Rotation	Clockwise/Counterclockwise
Mounting	Rigid Base	Drive End Bearing	Ball
Opp Drive End Bearing	Ball	Frame Material	Rolled Steel
Shaft Type	Keyed	Overall Length	12.69 in
Frame Length	6.75 in	Shaft Diameter	0.625 in
Shaft Extension	1.88 in		
Connection Drawing	17050308	Outline Drawing	B734ES-S01

This is an uncontrolled document once printed or downloaded and is subject to change without notice. Date Created:10/07/2021



DRAWING REVISION B	REVISION BY X.AN	DATE 06-25-2015	TOLERANCES UNLESS OTHERWISE SPECIFIED	DRAWN BY: R.LIAN	REGAL™ Regal Beloit America, Inc.
ECO ECO-0079651	APPROVED BY H.ZHANG	DATE 06-25-2015	DEC. INCH mm ANGLE .XX \pm 0.1 [\pm 2.5] \pm 0.5° .XX \pm 0.02 [\pm 0.51] .XXX \pm 0.005 [\pm 0.127] .XXXX \pm 0.0005 [\pm 0.0127]	DATE: 10-23-2014	
ECO DESCRIPTION SEE ECO	COPYRIGHT REGAL BELOIT AMERICA, INC. ALL RIGHTS RESERVED. PROPRIETARY AND CONFIDENTIAL INFORMATION - THIS DOCUMENT IS THE PROPERTY OF REGAL BELOIT AMERICA, INC. (OWNERS) AND CONTAINS OWNERS PROPRIETARY INFORMATION. ANY PERSON, CORPORATION OR OTHER FIRM RECEIVING IT IS DEEMED, BY RECEIVING IT, TO AGREE THAT IT, AND/OR ANY PART OF IT, SHALL NOT BE DISCLOSED TO ANY PERSON, CORPORATION OR OTHER ENTITY, DUPLICATED, AND/OR USED, EXCEPT AS EXPRESSLY APPROVED IN WRITING IN ADVANCE BY OWNER. THIS DOCUMENT SHALL BE RETURNED TO OWNER UPON REQUEST. IT MAY BE SUBJECT TO CERTAIN RESTRICTIONS UNDER APPLICABLE EXPORT CONTROL LAWS AND REGULATIONS.		REMOVE BURRS & BREAK SHARP EDGES .003/.015 [0.076/.381] CORNER FILLETS .02 [51] MACHINED SURFACES $\frac{125}{\sqrt{R}}$ INCH $\frac{3.2}{\sqrt{R}}$ mm	APPROVED BY: J.ZHU	DESCRIPTION MODEL-CFHP-56FR OUTLINE
				DATE: 10-23-2014	MATERIAL
				REFERENCE	PROCESS/FINISH
				THIRD ANGLE PROJECTION	SIZE DWG NO C B734ES
					SHEET 1