

PRODUCT INFORMATION PACKET



Model No: B808
Catalog No: B808
Pool Pump Motor, 2.0 HP, 1 Ph, 60 Hz, 208-230 V, 3600 RPM, Y56C Frame, DP



Regal and Century are trademarks of Regal Rexnord Corporation or one of its affiliated companies.
©2022 Regal Rexnord Corporation, All Rights Reserved. MC017097E





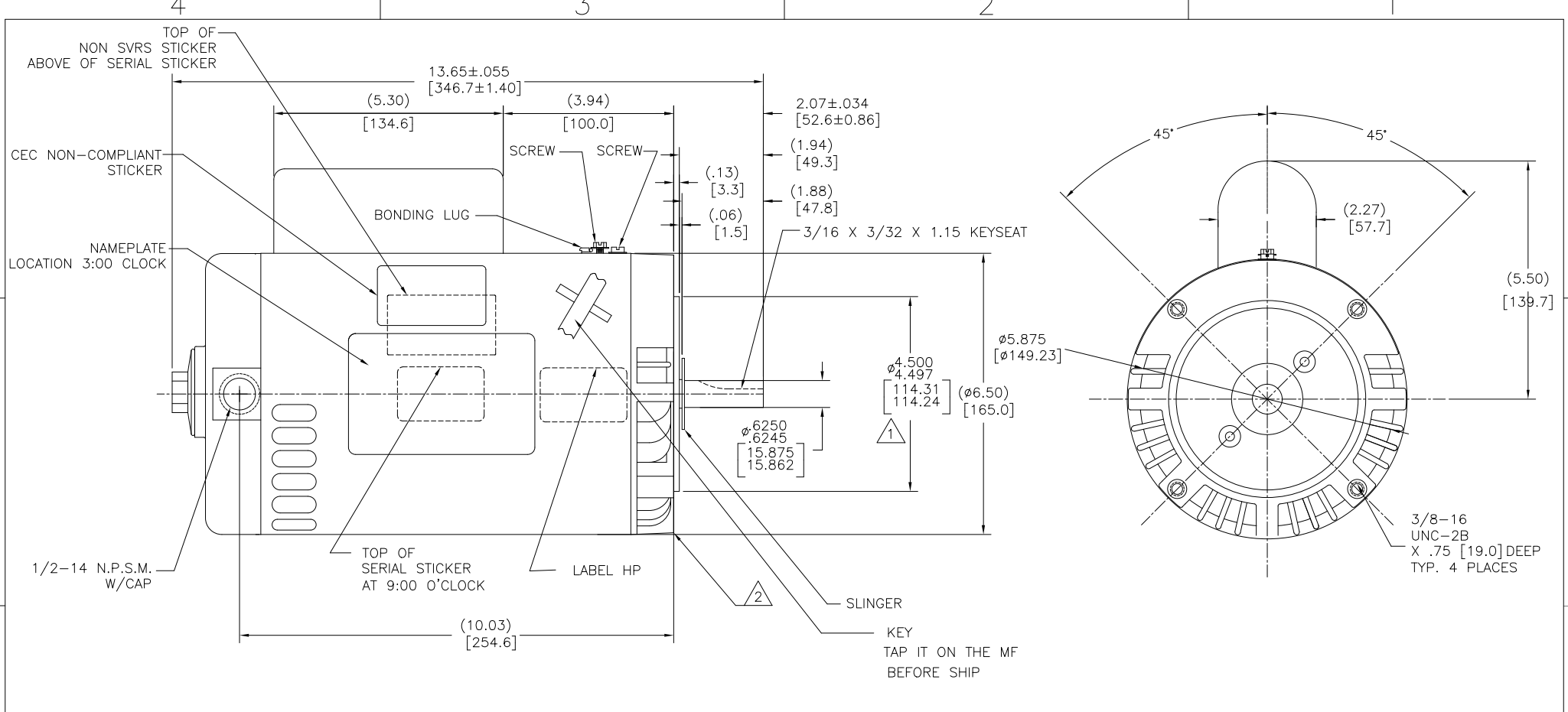
Nameplate Specifications

Output HP	2.0 Hp	Output KW	1.5 kW
Frequency	60 Hz	Voltage	208-230 V
Current	SF 10.4-9.6 A	Speed	3450 rpm
Service Factor	1.2	Phase	1
Duty	Continuous	Insulation Class	B
Frame	Y56C	Enclosure	Drip Proof
Thermal Protection	Thermally Protected	Ambient Temperature	50 °C
UL	Recognized	CSA	Y
Number of Speeds	1		

Technical Specifications

Electrical Type	Permanent Split Capacitor, Single Or Dual Voltage	Poles	2
Rotation	Counterclockwise Pump End	Mounting	C Face
Motor Orientation	Horizontal	Drive End Bearing	Ball
Opp Drive End Bearing	Ball	Frame Material	Rolled Steel
Shaft Type	5/8 KEYED	Overall Length	13.65 in
Frame Length	8.50 in	Shaft Diameter	0.625 in
Shaft Extension	2.07 in		
Connection Drawing	17050319.PCX	Outline Drawing	B808

This is an uncontrolled document once printed or downloaded and is subject to change without notice. Date Created:11/28/2022



NAMEPLATE DATA	EXTERNAL CONNECTION DIAGRAM	NOTES
MODEL: 165123 CUST PN: B808 HP: 2.0 SF: 1.20 ROT: CCWPE RPM: 3450 TYPE: CX CODE: G FORM: FRAME: Y 56 C VOLTS: 208-230 AMPS: SF 10.4-9.6 MAX AMPS: --- SF AMPS: - PH: 1 HZ: 60 INS: B AMB: 50°C DUTY: CONT ENCLOSURE: ODP THERMALLY PROTECTED		1. PILOT DIAMETER IS CONCENTRIC WITH SHAFT CENTERLINE WITHIN .004 T.I.R. 2. FACE OF MOUNTING FLANGE IS PERPENDICULAR TO SHAFT CENTERLINE WITHIN .004 T.I.R. 3. SHAFT RUNOUT NOT TO EXCEED .002 T.I.R. 4. END PLAY NOT TO EXCEED .010 MEASURED WITH NO THRUST 5. ALL DIMENSIONS SHOWN IN PARENTHESIS ARE REFERENCE DIMENSIONS.

PERFORMANCE CURVE	APPROVED SAMPLE		
15530311	-----		
UL COMPONENT	CSA		
FILE#	CCN#	FILE#	GUIDE#
E14663	XEWR2	LR4642	4211-01
CUSTOMER	DISTRIBUTION		

DRAWING REVISION	REVISION BY	DATE	TOLERANCES UNLESS OTHERWISE SPECIFIED	DRAWN BY:	Regal Beloit America, Inc. MODEL-CFHP-56FR OUTLINE
E	KHADHAR	01/07/2022	DEC. INCH mm ANGLE	AS	
ECO	APPROVED BY	DATE	.X ±0.1 [±2.5] ±0.5°	DATE:	
ECR-0214795	DS	01/07/2022	.XX ±0.02 [±0.51]	10-21-2010	
ECO DESCRIPTION			.XXX ±0.005 [±0.127]	APPROVED BY:	REFERENCE MATERIAL PROCESS/FINISH 10-21-2010
ADDED KEY AND HP LABEL			XXXX ±0.0005 [±0.0127]	TZ	
COPYRIGHT REGAL BELOIT AMERICA, INC. ALL RIGHTS RESERVED. PROPRIETARY AND CONFIDENTIAL INFORMATION - THIS DOCUMENT IS THE PROPERTY OF REGAL BELOIT AMERICA, INC. (OWNER) AND COMPANY OWNER'S PROPRIETARY INFORMATION. ANY PERSON, CORPORATION OR OTHER ENTITY, DUPLICATED, AND/OR USED, EXCEPT AS EXPRESSLY APPROVED IN WRITING IN ADVANCE BY OWNER, THIS DOCUMENT SHALL BE RETURNED TO OWNER UPON REQUEST. IT MAY BE SUBJECT TO CERTAIN RESTRICTIONS UNDER APPLICABLE EXPORT CONTROL LAWS AND REGULATIONS.			REMOVE BURRS & BREAK SHARP EDGES .003/.015 [0.076/.381] X 45°	DATE:	
			CORNER FILLETS R.02 [51]	10-21-2010	
			MACHINED SURFACES .125/ mm 3/2	REFERENCE	
			mm SHOWN IN [BRACKETS]	THIRD ANGLE PROJECTION	
				SIZE DWG NO	
				C B808	
				SHEET	
				1	