

PRODUCT INFORMATION PACKET



Model No: B818

Catalog No: B818

Pool Pump Motor, 3.0 HP, 1 Ph, 60 Hz, 208-230 V, 3600 RPM, Y56J Frame, DP



Regal and Century are trademarks of Regal Rexnord Corporation or one of its affiliated companies.
©2024 Regal Rexnord Corporation, All Rights Reserved. MC017097E





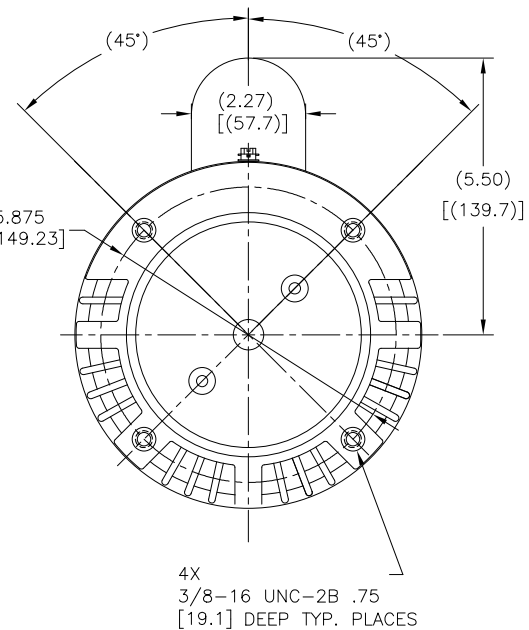
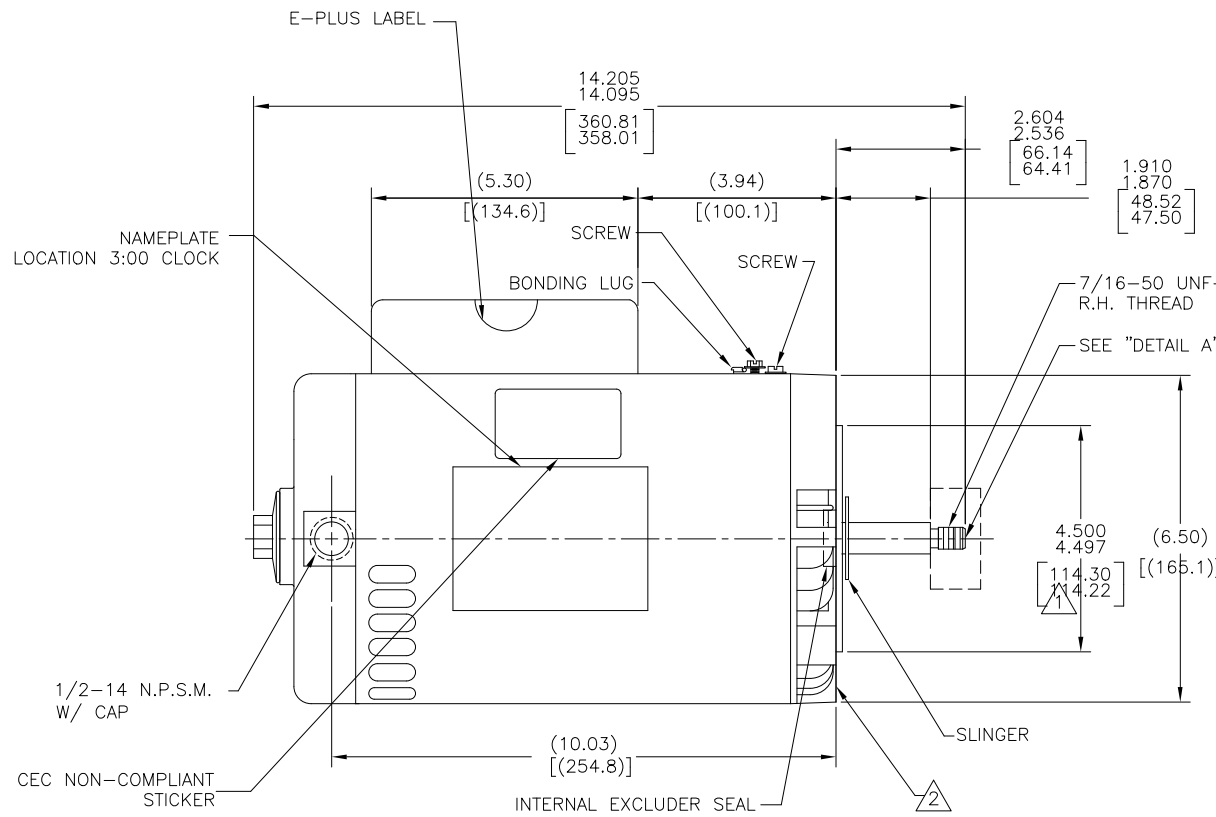
Nameplate Specifications

Phase	1	Output HP	3.0 Hp
Output KW	2.2 kW	Voltage	208-230 V
Speed	3450 rpm	Service Factor	1.15
Frame	Y56J	Enclosure	Drip Proof
Thermal Protection	Thermally Protected	Ambient Temperature	50 °C
Frequency	60 Hz	Current	SF 15.0-13.6 A
Duty	Continuous	Insulation Class	B
UL	Recognized	CSA	Y
Number of Speeds	1		

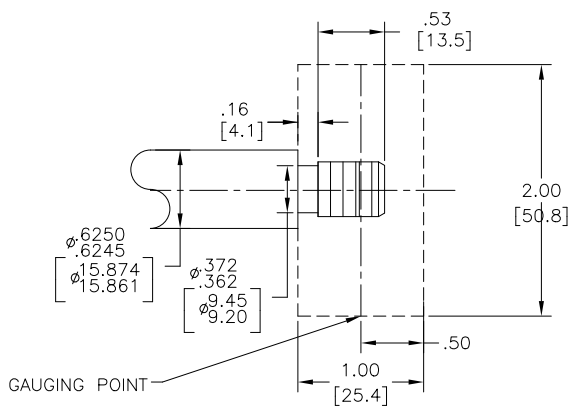
Technical Specifications

Electrical Type	Permanent Split Capacitor, Single Or Dual Voltage	Poles	2
Rotation	Counterclockwise Pump End	Mounting	Round
Motor Orientation	Horizontal	Drive End Bearing	Ball
Opp Drive End Bearing	Ball	Frame Material	Rolled Steel
Shaft Type	7/16 Threaded	Overall Length	14.15 in
Frame Length	8.50 in	Shaft Diameter	0.625 in
Shaft Extension	2.57 in		
Outline Drawing	B818	Connection Drawing	17050319.PCX

This is an uncontrolled document once printed or downloaded and is subject to change without notice. Date Created:04/22/2024



NAMEPLATE DATA	EXTERNAL CONNECTION DIAGRAM	NOTES
MODEL: 165126 CUST PN: B818 HP: 3.0 SF: 1.15 ROT: CCWPE RPM: 3450 TYPE: CX FORM: CODE: F FRAME: Y 56 J VOLTS: 208-230 AMPS: 15.0-13.6 MAX AMPS: SF AMPS: - PH: 1 HZ: 60 INS: B AMB: 50°C DUTY: CONT ENCLOSURE: ODP THERMALLY PROTECTED		<ul style="list-style-type: none"> △ PILOT DIAMETER IS CONCENTRIC WITH SHAFT CENTERLINE WITHIN .004[.10] T.I.R. △ FACE OF MOUNTING FLANGE IS PERPENDICULAR TO SHAFT CENTERLINE WITHIN .004[.10] T.I.R. 3. SHAFT RUNOUT NOT TO EXCEED .002[.05] T.I.R 4. END PLAY NOT TO EXCEED .010[.25] MEASURED WITH NO THRUST



PERFORMANCE CURVE	APPROVED SAMPLE		
15530311			
UL COMPONENT	CSA		
FILE#	CCN#	FILE#	GUIDE#
PENDING	PENDING	PENDING	PENDING
CUSTOMER			

DRAWING REVISION	REVISION BY	DATE	TOLERANCES UNLESS OTHERWISE SPECIFIED	DRAWN BY:	
F	S JIMENEZ	4-16-2024	DEC. INCH mm ANGLE	AS	
ECO	APPROVED BY	DATE	.X ±0.1 [±2.5] ±0.5	DATE:	10-21-2010
ECO-0233210	S JIMENEZ	4-16-2024	.XX ±0.02 [±0.51]	APPROVED BY:	TZ
ECO DESCRIPTION			.XXX ±0.005 [±0.127]	DATE:	10-21-2010
SEE ECR			.XXXX ±0.0005 [±0.0127]	REFERENCE	
			REMOVE BURRS & BREAK SHARP EDGES .003/.015 [0.076/.381] X 45°	MATERIAL	OUTLINE
			CORNER FILLETS R.02 [.51]	PROCESS/FINISH	
			MACHINED SURFACES	SIZE DWG NO	B818
			INCH mm 3/2	SHEET	1
			mm SHOWN IN [BRACKETS]	THIRD ANGLE PROJECTION	