

PRODUCT INFORMATION PACKET



Model No: B845
Catalog No: B845

Pool Pump Motor, 1/2 HP, 1 Ph, 60 Hz, 208-230/115 V, 3600 RPM, P56Y Frame, DP



Regal and Century are trademarks of Regal Rexnord Corporation or one of its affiliated companies.
©2024 Regal Rexnord Corporation, All Rights Reserved. MC017097E





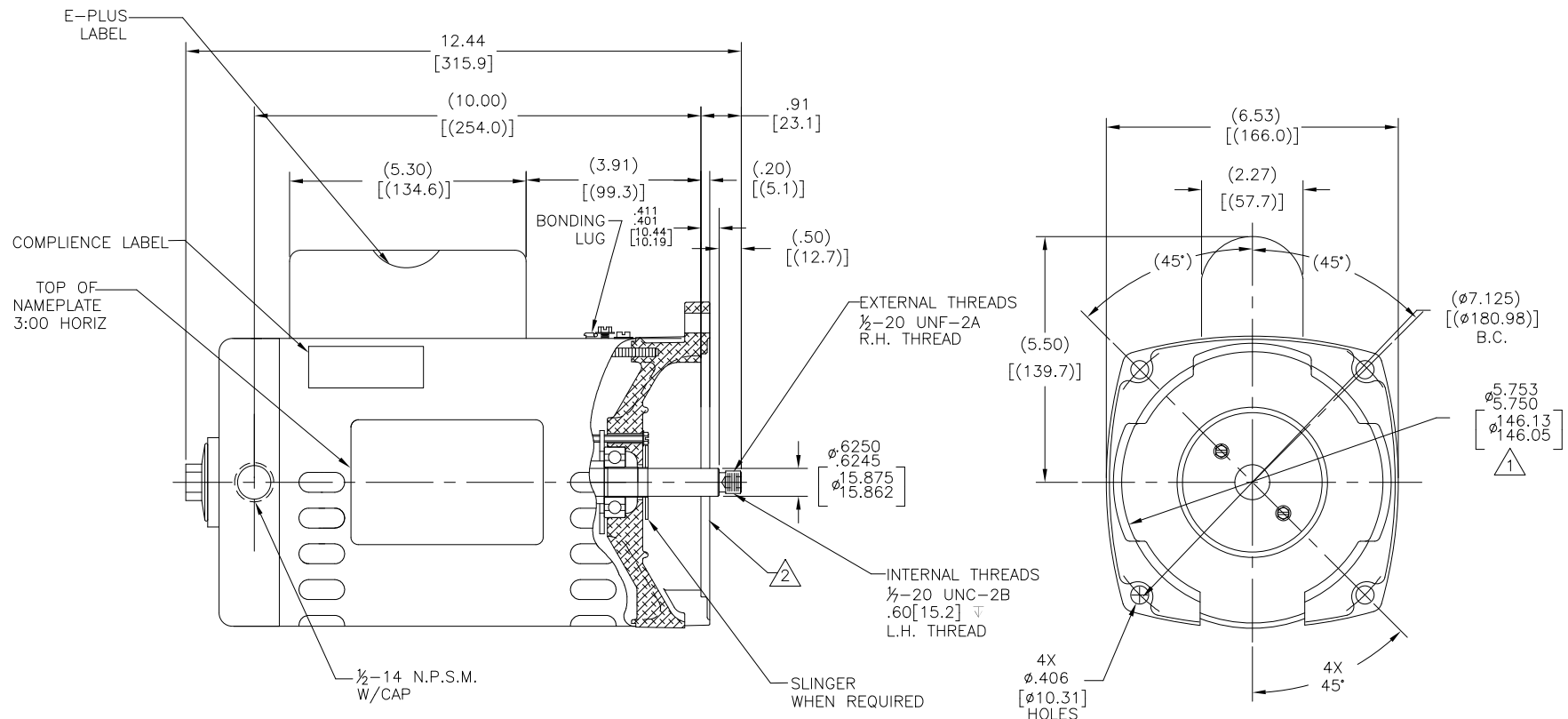
Nameplate Specifications

Phase	1	Output HP	1/2 Hp
Output KW	0.37 kW	Voltage	208-230/115 V
Speed	3450 rpm	Service Factor	1.9
Frame	P56Y	Enclosure	Drip Proof
Thermal Protection	Thermally Protected	Ambient Temperature	50 °C
Frequency	60 Hz	Current	SF 4.5-4.4/8.8 A
Duty	Continuous	Insulation Class	B
UL	Recognized	CSA	Y
Number of Speeds	1		

Technical Specifications

Electrical Type	Permanent Split Capacitor, Single Or Dual Voltage	Poles	2
Rotation	Counterclockwise Pump End	Mounting	Round
Motor Orientation	Horizontal	Drive End Bearing	Ball
Opp Drive End Bearing	Ball	Frame Material	Rolled Steel
Shaft Type	1/2 Threaded	Overall Length	12.40 in
Frame Length	8.00 in	Shaft Diameter	0.625 in
Shaft Extension	0.91 in		
Connection Drawing	17536715.PCX	Outline Drawing	B845-S01

This is an uncontrolled document once printed or downloaded and is subject to change without notice. Date Created:07/09/2024



NAMEPLATE DATA	EXTERNAL CONNECTION DIAGRAM	NOTES
MODEL: 165276 CUST PN: B845 HP: 1/2 SF: 1.90 ROT: CCWPE RPM: 3450 TYPE: CX CODE: K FORM: KJM FRAME: P56Y VOLTS: 208-230/115 AMPS: SF4.5-4.4/8.8 MAX AMPS: SF AMPS: - PH: 1 HZ: 60 INS: B AMB: 50°C DUTY: CONT ENCLOSURE: ODP THERMALLY PROTECTED		1. PILOT DIAMETER IS CONCENTRIC WITH SHAFT CENTERLINE WITHIN .006[.15] T.I.R. 2. FACE OF MOUNTING FLANGE IS PERPENDICULAR TO SHAFT CENTERLINE WITHIN .004[.10] T.I.R. 3. SHAFT RUNOUT NOT TO EXCEED .002[.05] T.I.R. 4. FOR THREADED SHAFT EXT. MATING PARTS SHOULD BE RELIEVED ONE THREAD TO CLEAR FILLET 5. FOR THREADED SHAFT EXT. ECCENTRICITY OF THREADED PORTION OF SHAFT IS HELD WITHIN .004[.10] TOTAL GAGE READING WITH THE INDICATOR ON O.D. OF GROUND RING GAGE AS SHOWN. THE GAGE BEING STATIONARY WITH RESPECT TO THE ROTOR. 6. END PLAY NOT TO EXCEED .010[.25] MEASURED WITH NO THRUST. 7. ALL DIMENSIONS SHOWN IN PARENTHESIS ARE REFERENCE DIMENSIONS.

PERFORMANCE CURVE	APPROVED SAMPLE		
17127713			
UL COMPONENT	CSA		
FILE#	CCN#	FILE#	GUIDE#
PENDING	PENDING	PENDING	PENDING
CUSTOMER	DISTRIBUTION		

DRAWING REVISION: H	REVISION BY: S JIMENEZ	DATE: 7-3-2024	TOLERANCES UNLESS OTHERWISE SPECIFIED	DRAWN BY: YL	
ECO	APPROVED BY: S JIMENEZ	DATE: 7-3-2024	DEC. INCH mm ANGLE	DATE: 12-01-2010	
ECR-0235365			.X ±0.1 [±2.5] ±0.5°	APPROVED BY: TZ	DESCRIPTION: MODEL-CFHP-56FR OUTLINE
SEE ECR			.XX ±0.02 [±0.51]	DATE: 12-01-2010	MATERIAL: -
			.XXX ±0.005 [±0.127]	REFERENCE: -	PROCESS/FINISH: -
			.XXXX ±0.0005 [±0.0127]	THIRD ANGLE PROJECTION	SIZE DWG NO: B845
			REMOVE BURRS & BREAK SHARP EDGES .003/.015 [0.076/.381]		SHEET 1
			CORNER FILLETS .02 [0.51]		
			MACHINED SURFACES .125/ mm 3/2		
			mm SHOWN IN [BRACKETS]		