

PRODUCT INFORMATION PACKET



Model No: B871

Catalog No: B871

General Purpose Motor, 1.5 HP, 1 Ph, 60 Hz, 115/230 V, 3600 RPM, T56C Frame, TEFC



Regal and Century are trademarks of Regal Rexnord Corporation or one of its affiliated companies.

©2023 Regal Rexnord Corporation, All Rights Reserved. MC017097E





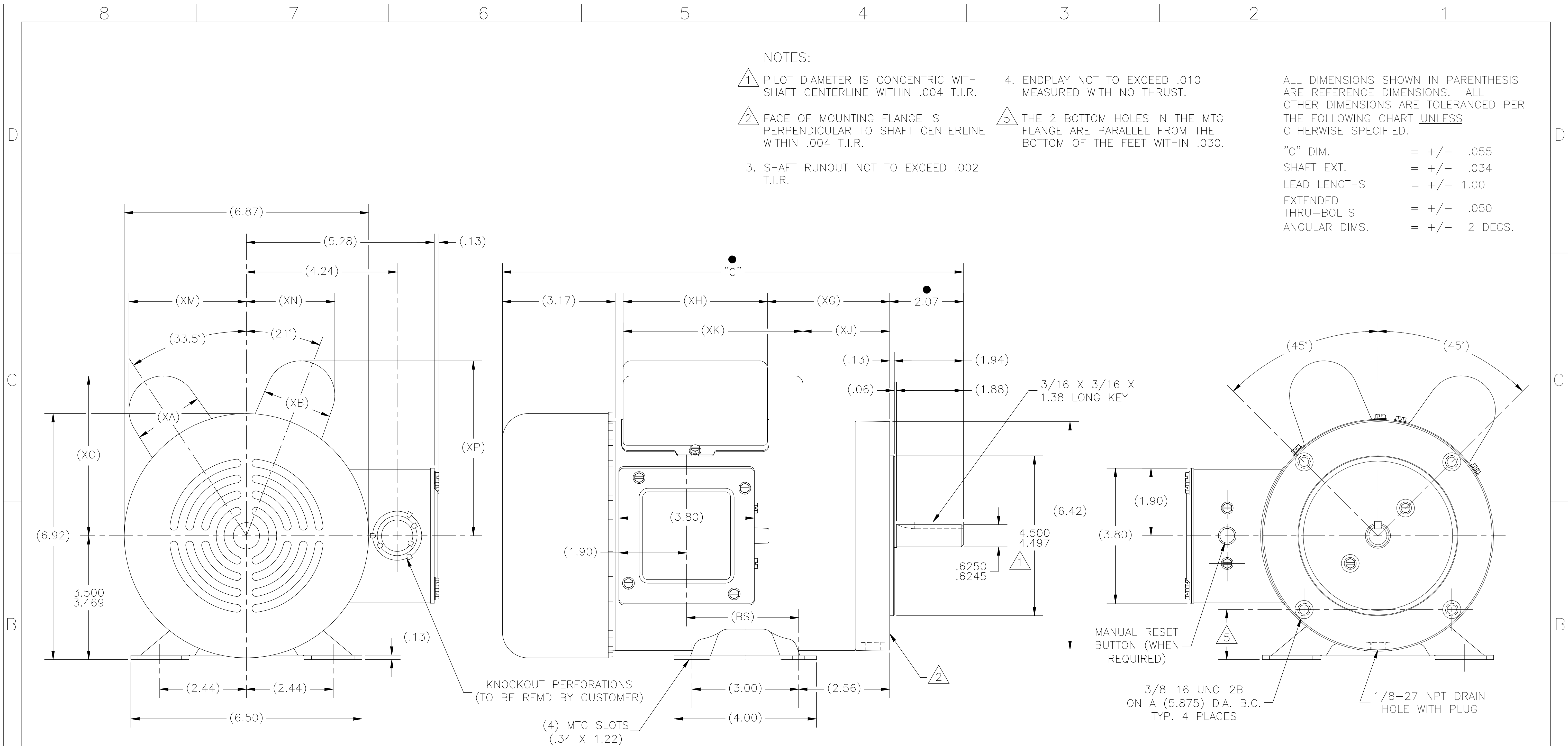
Nameplate Specifications

Phase	1	Output HP	1.5 Hp
Output KW	1.1 kW	Voltage	115/230 V
Speed	3450 rpm	Service Factor	1.15
Frame	T56C	Enclosure	Totally Enclosed Fan Cooled
Thermal Protection	Thermally Protected	Ambient Temperature	40 °C
Frequency	60 Hz	Current	13.0/6.5 A
Duty	Continuous	Insulation Class	B
UL	Recognized	CSA	Y
CE	N	Number of Speeds	1

Technical Specifications

Electrical Type	Capacitor Start, Capacitor Run, Single Or Dual Voltage	Starting Method	Across The Line
Poles	2	Rotation	Reversible Counterclockwise
Mounting	Rigid Base	Drive End Bearing	Ball
Opp Drive End Bearing	Ball	Frame Material	Rolled Steel
Shaft Type	Keyed	Overall Length	12.71 in
Frame Length	6.50 in	Shaft Diameter	0.625 in
Shaft Extension	2.07 in		
Connection Drawing	17050307.PCX	Outline Drawing	18376901

This is an uncontrolled document once printed or downloaded and is subject to change without notice. Date Created:09/27/2023



NOTES:

- PILOT DIAMETER IS CONCENTRIC WITH SHAFT CENTERLINE WITHIN .004 T.I.R.
- FACE OF MOUNTING FLANGE IS PERPENDICULAR TO SHAFT CENTERLINE WITHIN .004 T.I.R.
- SHAFT RUNOUT NOT TO EXCEED .002 T.I.R.
- ENDPLAY NOT TO EXCEED .010 MEASURED WITH NO THRUST.
- THE 2 BOTTOM HOLES IN THE MTG FLANGE ARE PARALLEL FROM THE BOTTOM OF THE FEET WITHIN .030.

ALL DIMENSIONS SHOWN IN PARENTHESIS ARE REFERENCE DIMENSIONS. ALL OTHER DIMENSIONS ARE TOLERANCED PER THE FOLLOWING CHART UNLESS OTHERWISE SPECIFIED.

"C" DIM. = +/- .055
 SHAFT EXT. = +/- .034
 LEAD LENGTHS = +/- 1.00
 EXTENDED THRU-BOLTS = +/- .050
 ANGULAR DIMS. = +/- 2 DEGS.

-03															
-02															
-01	CP	T56C	12.71	2.90	2.27	2.01	3.19	4.06	1.94	5.30	3.52	2.49	4.77	4.92	
A	GROUP	TYPE	FRAME	"C"	(BS)	(XA)	(XB)	(XG)	(XH)	(XJ)	(XK)	(XM)	(XN)	(XO)	(XP)

● = CRITICAL DIMENSION

DRAWING REVISION G	REVISION BY A. LITTLE/JOHN	DATE 08-10-2016	TOLERANCES UNLESS OTHERWISE SPECIFIED DEC INCH mm ANGLE	DRAWN BY EIS
ECO 0098984	APPROVED BY J. HESS	DATE 08-15-2016	.X ±0.1 [±2.5] ±0.5° .XX ±0.02 [±0.51] .XXX ±0.005 [±0.127] .XXXX ±0.0005 [±0.0127]	DATE: 06-17-1993
DESCRIPTION THRU-BOLT CHANGE			REMOVE BURRS & BREAK SHARP EDGES .003/.015 [0.076/.381] CORNER FILLETS .02 [.51] MACHINED SURFACES .002 INCH / .05 mm mm SHOWN IN [BRACKETS]	APPROVED BY: DATE:
COPYRIGHT REGAL BELLOIT AMERICA, INC. ALL RIGHTS RESERVED. PROPRIETARY AND CONFIDENTIAL INFORMATION - THIS DOCUMENT IS THE PROPERTY OF REGAL BELLOIT AMERICA, INC. (OWNER) AND CONTAINS OWNER'S PROPRIETARY INFORMATION. ANY REPRODUCTION OR OTHER FORM REUSE OF THIS DOCUMENT BY RECEIVING IT TO AGREE THAT IT AND/OR ANY PART OF IT, SHALL NOT BE DISCLOSED TO ANY PERSON, CORPORATION OR OTHER ENTITY, IN ANY MANNER, WITHOUT THE EXPRESS WRITTEN APPROVAL OF REGAL BELLOIT AMERICA, INC. (OWNER). THIS DOCUMENT SHALL BE RETURNED TO OWNER UPON REQUEST. IT MAY BE SUBJECT TO CERTAIN RESTRICTIONS UNDER APPLICABLE EXPORT CONTROL LAWS AND REGULATIONS.			REFERENCE	DESCRIPTION OUTLINE
			THIRD ANGLE PROJECTION	MATERIAL PROCESS/FINISH
			SIZE [DWG NO.] D [183769]	SHEET 1