

PRODUCT INFORMATION PACKET



Model No: B971
Catalog No: B971
Pool Pump Motor, 1/2-.06 HP, 1 Ph, 60 Hz, 115 V, 3600 RPM, M56J Frame, DP



Regal and Century are trademarks of Regal Rexnord Corporation or one of its affiliated companies.
©2022 Regal Rexnord Corporation, All Rights Reserved. MC017097E





Nameplate Specifications

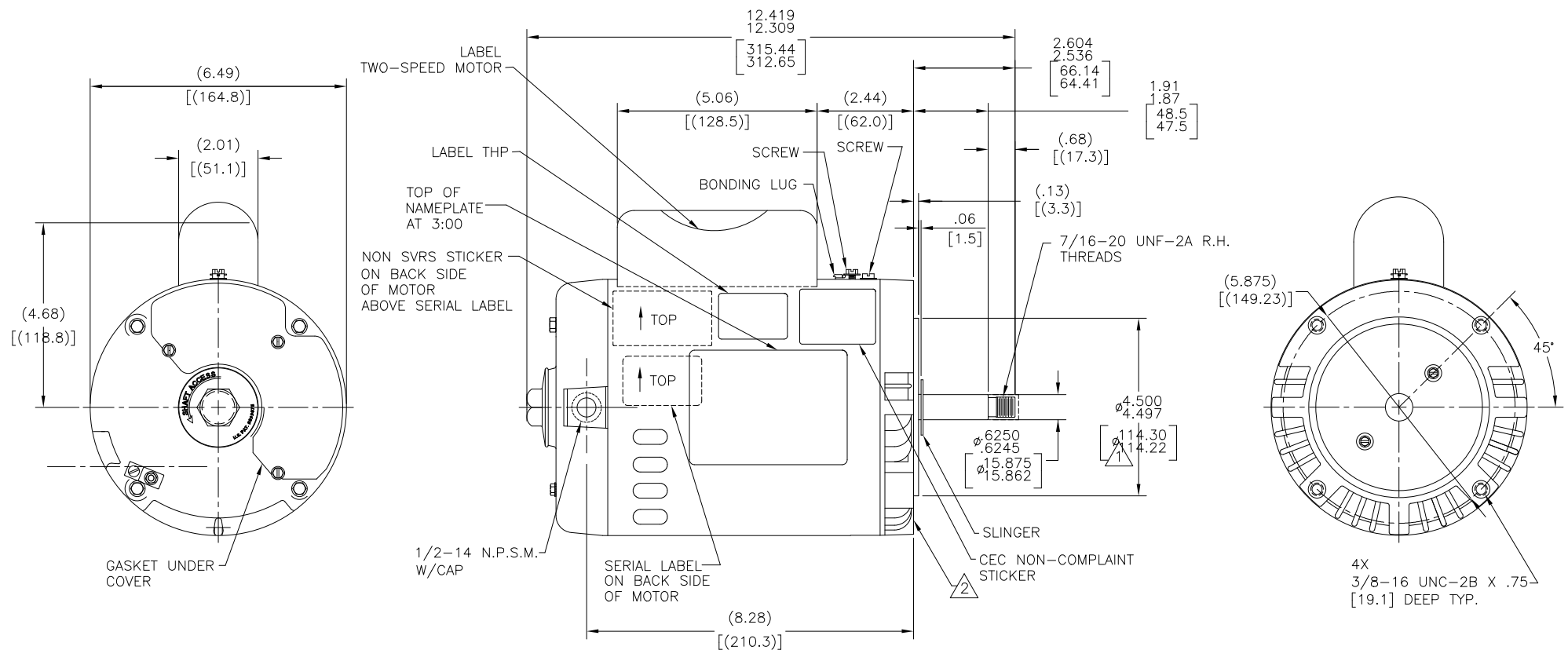
Output HP	1/2-.06 Hp	Output KW	0.37 kW
Frequency	60 Hz	Voltage	115 V
Current	SF 8.8/3.55 A	Speed	3450/1725 rpm
Service Factor	1.6	Phase	1
Duty	Continuous	Insulation Class	B
Frame	M56J	Enclosure	Drip Proof
Thermal Protection	Thermally Protected	Ambient Temperature	40 °C
UL	Recognized	CSA	Y
Number of Speeds	2-2-VT		

Technical Specifications

Electrical Type	Permanent Split Capacitor, High Speed; Split Phase, Low Speed	Poles	2/4
Rotation	Counterclockwise Pump End	Mounting	Round
Motor Orientation	Horizontal	Drive End Bearing	Ball
Opp Drive End Bearing	Ball	Frame Material	Rolled Steel
Shaft Type	7/16 Threaded	Overall Length	12.30 in
Frame Length	6.75 in	Shaft Diameter	0.625 in
Shaft Extension	2.57 in		
Outline Drawing	B971-S01	Connection Drawing	17888703.PCX

This is an uncontrolled document once printed or downloaded and is subject to change without notice. Date Created:11/29/2022

REV	ECO	REV BY	DATE	APPD	DATE
D	ECR-0212285	D.SURYAWANSHI	09/06/2021	.	.



NAMEPLATE DATA	EXTERNAL CONNECTION DIAGRAM	NOTES
MODEL: 177056 CUST PN: B971 HP: 1/2-.06 SF: 1.60 ROT: CCWPE RPM: 3450/1725 TYPE: CXPM CODE: K FORM: FRAME: M 56 J VOLTS: 115 AMPS: SF 8.8/3.55 MAX AMPS: SF AMPS: PH: 1 HZ: 60 INS: B AMB: 40°C DUTY: CONT ENCLOSURE: ODP THERMALLY PROTECTED		1. PILOT DIAMETER IS CONCENTRIC WITH SHAFT CENTERLINE WITHIN .004[.10] T.I.R. 2. FACE OF MOUNTING FLANGE IS PERPENDICULAR TO SHAFT CENTERLINE WITHIN .004[.10] T.I.R. 3. SHAFT RUNOUT NOT TO EXCEED .002[.05] T.I.R. 4. FOR THREADED SHAFT EXT. MATING PARTS SHOULD BE RELIEVED ON THREAD TO CLEAR FILLET 5. ALL DIMENSIONS SHOWN IN PARENTHESIS ARE REFERENCE DIMENSIONS

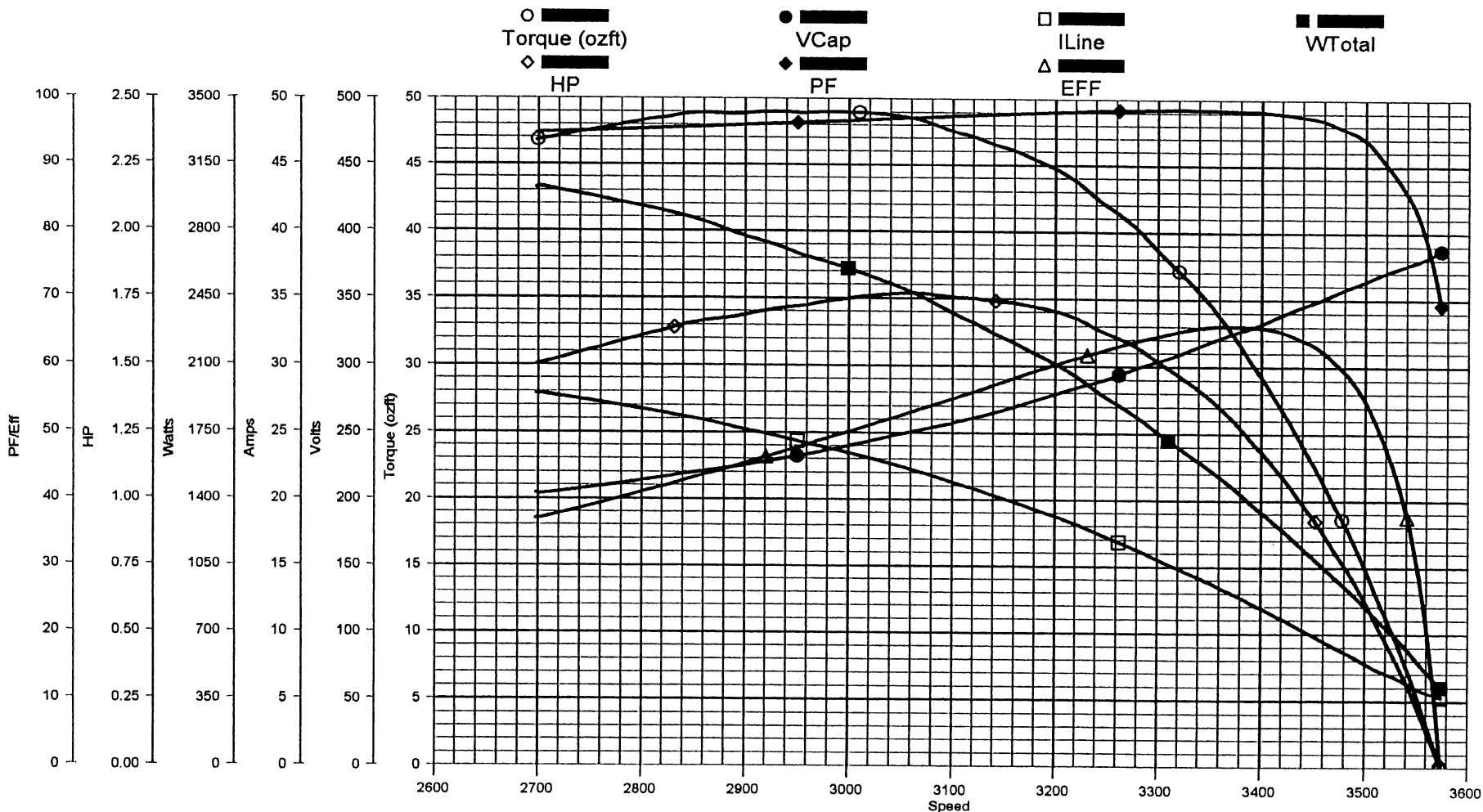
PERFORMANCE CURVE	APPROVED SAMPLE	GEOMETRIC CHARACTERISTICS & SYMBOLS	UNLESS OTHERWISE SPECIFIED DIM. TOLERANCES ARE AS FOLLOWS:	DR BY: FX	09-08-2010
16334112		□ FLATNESS — STRAIGHTNESS ∠ ANGULARITY ⊥ PERPENDICULARITY (SQUARENESS) // PARALLELISM ○ ROUNDNESS (CIRCULARITY) ∅ CYLINDRICITY ⊖ PROFILE OF ANY SURFACE ⊕ PROFILE OF ANY LINE ? RUNOUT ⊕ TRUE POSITION ⊙ CONCENTRICITY = SYMMETRY	X XX XXX XXXX INCH ±.1 ±.02 ±.005 ±.0005 mm ±0.5 ±0.13 ±0.013 ANG. ±.50 DEG REMOVE BURRS & BREAK SHARP EDGES: INCH .003-.015 mm 0.1-.04 CORNER FILLETS TO: INCH .020 mm 0.5 MACHINE SURFACES: INCH 125 mm 3.2	APPD: TZ	09-08-2010
UL COMPONENT	CSA			THIRD ANGLE PROJECTION	EDS DATE 11-11-2011
FILE#	CCN#	FILE#	GUIDE#		FORMAT REV G
E14663	XZWR2	LR4642	4211-01		
CUSTOMER	DISTRIBUTION			CONFIDENTIAL: THIS DRAWING AND ITS INFORMATION ARE THE EXCLUSIVE AND CONFIDENTIAL PROPERTY OF REGAL-BELOIT CORPORATION AND ARE NOT TO BE DISCLOSED, DUPLICATED, DISTRIBUTED OR OTHERWISE USED WITHOUT THE WRITTEN CONSENT OF REGAL-BELOIT CORPORATION. -ALL RIGHTS RESERVED.	

		DESCRIPTION OUTLINE
SIZE	DWG NO	
C	B971	
SCALE	NONE	SHEET 1

AO Smith

Performance Down Project: 0444173 (High Speed)

Thursday, September 09, 2004 06:48 AM



TRACKING #: 10028947
 SBU: Pump
 ENGINEER: JAMIE WATKINS
 TECHNICIAN: DAN
 BENCH: 1
 TORQUE CELL: 250 lb-in
 NP RPM: 3450
 # SPEEDS: 2
 MOTOR #: 1
 TYPE: CXPM

HI SPEED (2 POLE)

CUSTOMER: A. O. SMITH
 MODEL: 0444173A
 FRAME: 48
 PHASES: 1
 HP: 0.50
 VOLTS: 115.0
 HERTZ: 60
 START CAP: 0.00
 RUN CAP: 25.00
 COMMENT3:

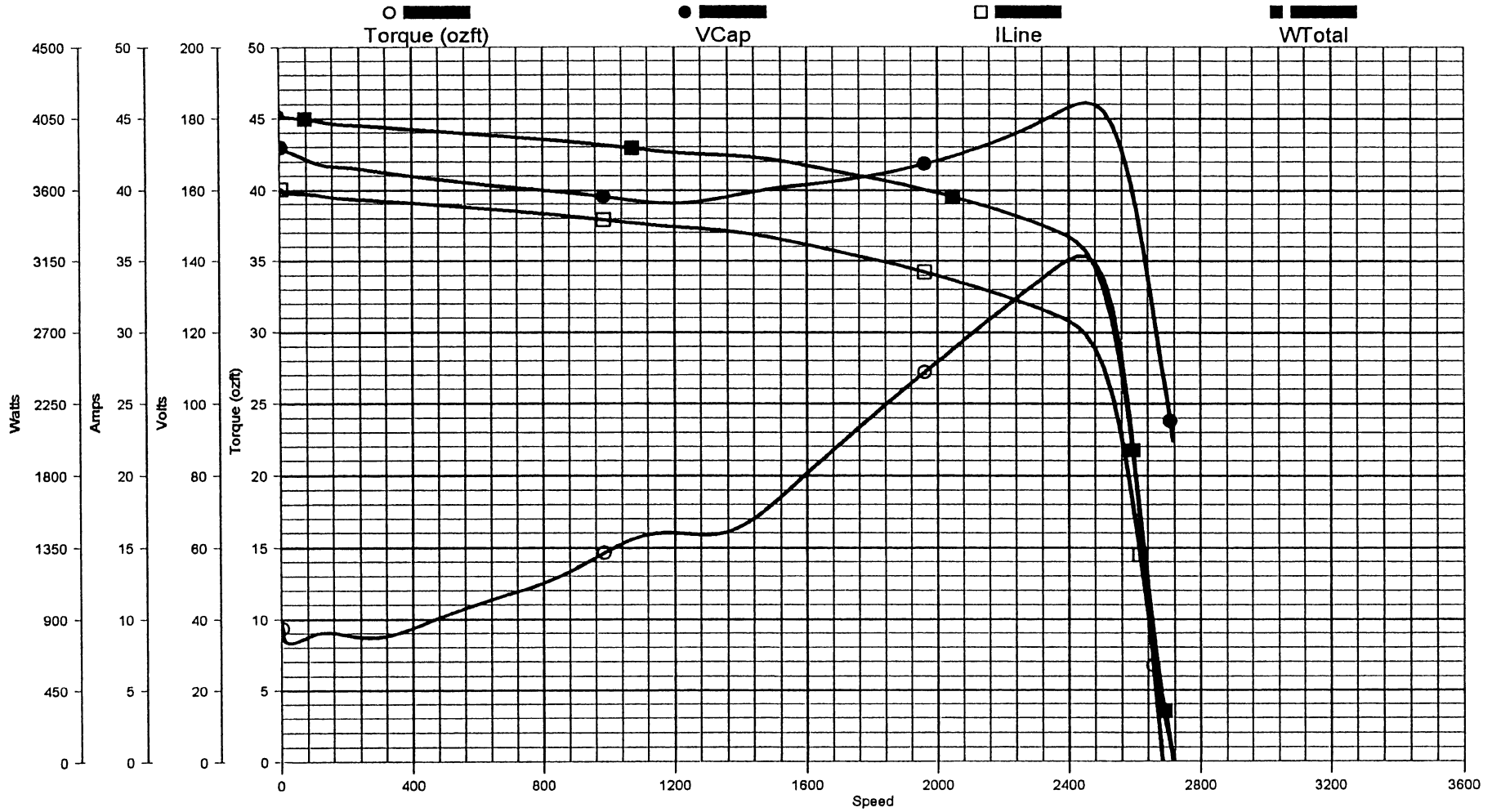
LOCK AMPS: 40.1A
LOCK TORQUE: 9.00Z-ft
BREAKDOWN TORQUE: 49.0 OZ-ft

DESCRIPTION: OFFSET
 BDT: 49.00
 MT: 49.02
 SF: 0.00
 LRT: 0.00
 LRA: 0.00
 PUT: 0.00
 COMMENT1:
 COMMENT2:
 COMMENT4:

AO Smith

Performance Up Project: 0444173 (High Speed)

Thursday, September 09, 2004 07:02 AM



TRACKING #: 10028947
 SBU: Pump
 ENGINEER: JAMIE WATKINS
 TECHNICIAN: DAN
 BENCH: 1
 TORQUE CELL: 250 lb-in
 NP RPM: 3450
 # SPEEDS: 2
 MOTOR #: 1
 TYPE: CXPM

HI SPEED (2 POLE)

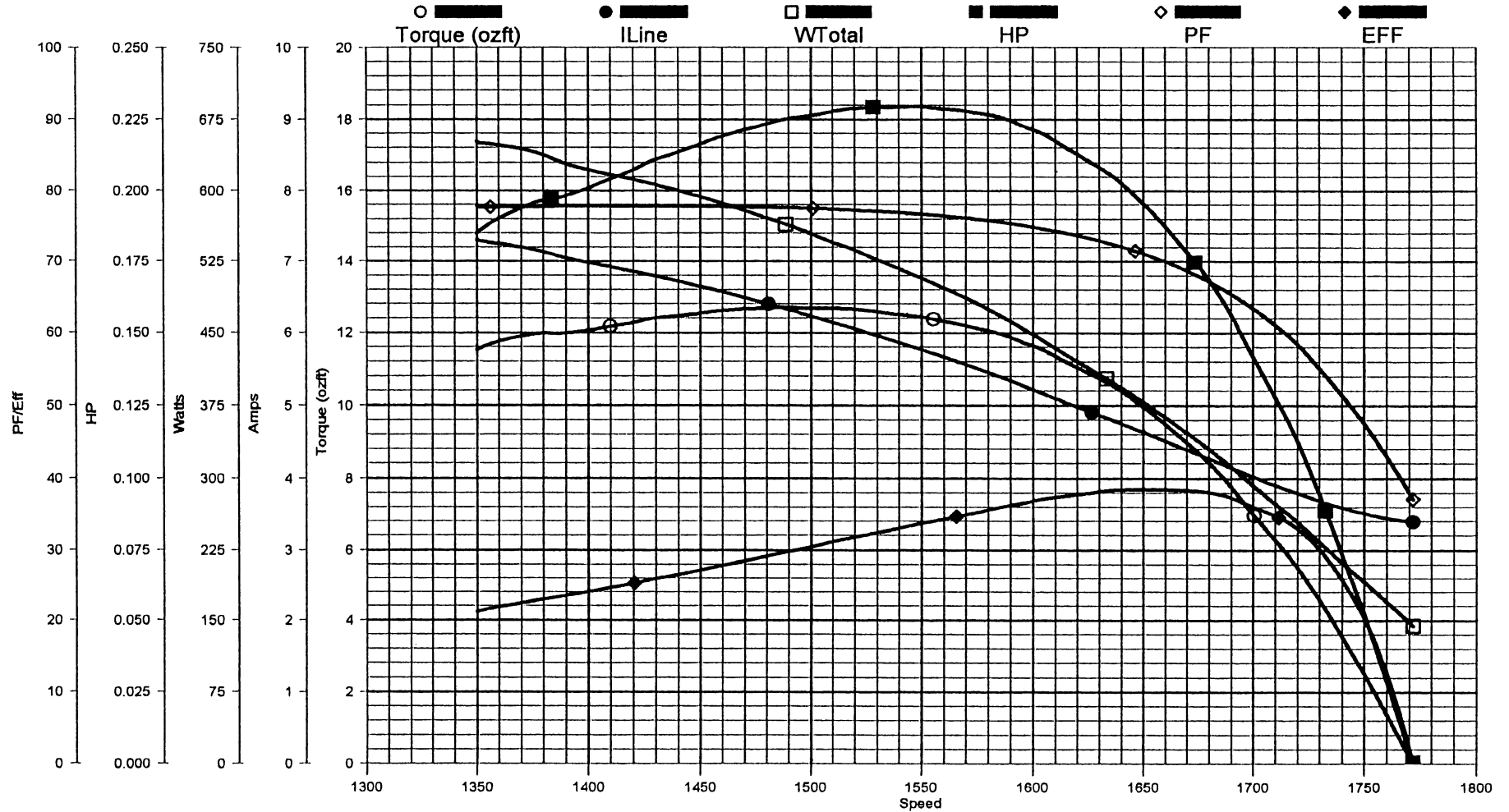
CUSTOMER: A. O. SMITH
 MODEL: 0444173A
 FRAME: 48
 PHASES: 1
 HP: 0.50
 VOLTS: 115.0
 HERTZ: 60
 START CAP: 0.00
 RUN CAP: 25.00
 COMMENT3:

DESCRIPTION: 0-SYNC
 BDT: 35.36
 MT: 35.36
 SF: 0.00
 LRT: 9.70
 LRA: 40.12
 PUT: 8.34
 COMMENT1:
 COMMENT2:
 COMMENT4:

AO Smith

Performance Down Project: 0444173 (Low Speed)

Thursday, September 09, 2004 07:16 AM



TRACKING #: 10028947 SBU: Pump ENGINEER: JAMIE WATKINS TECHNICIAN: DAN BENCH: 1 TORQUE CELL: 250 lb-in NP RPM: 1725 # SPEEDS: 2 MOTOR #: 1 TYPE: CXPM	CUSTOMER: A. O. SMITH MODEL: 0444173A FRAME: 48 PHASES: 1 HP: 0.06 VOLTS: 115.0 HERTZ: 60 START CAP: 0.00 RUN CAP: 25.00 COMMENT3:	DESCRIPTION: OFFSET BDT: 12.71 MT: 12.71 SF: 0.00 LRT: 0.00 LRA: 0.00 PUT: 0.00 COMMENT1: COMMENT2: COMMENT4:
--	---	--

LOW SPEED (4 POLE)

LOCK AMPS: 17.6A

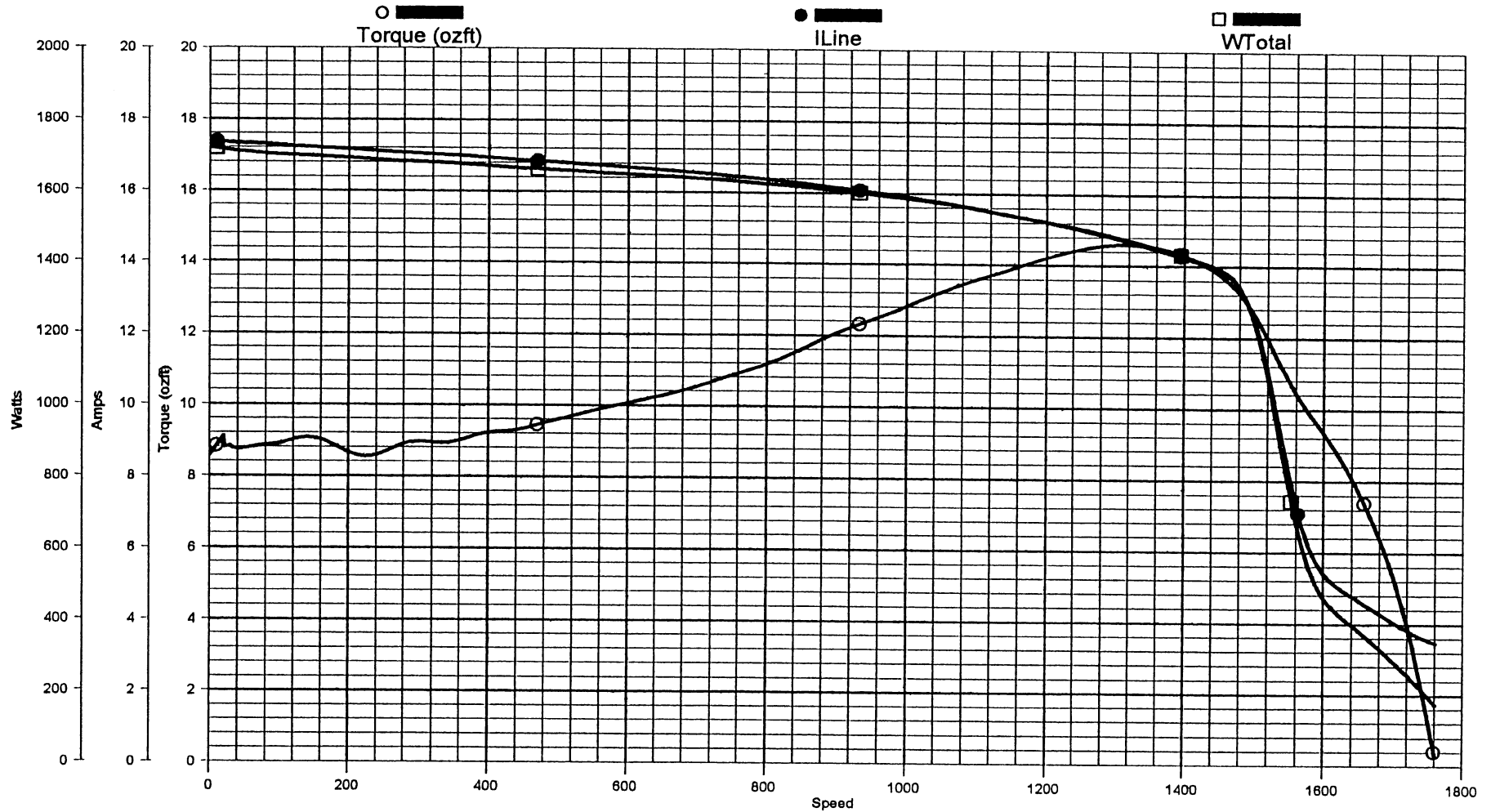
LOCK TORQUE: 9.4 oz-ft

BREAKDOWN TORQUE: 12.7 oz-ft

AO Smith

Performance Up Project: 0444173 (Low Speed)

Thursday, September 09, 2004 07:20 AM



TRACKING #: 10028947
 SBU: Pump
 ENGINEER: JAMIE WATKINS
 TECHNICIAN: DAN
 BENCH: 1
 TORQUE CELL: 250 lb-in
 NP RPM: 1725
 # SPEEDS: 2
 MOTOR #: 1
 TYPE: CXPM

LOW SPEED (4 POLE)

CUSTOMER: A. O. SMITH
 MODEL: 0444173A
 FRAME: 48
 PHASES: 1
 HP: 0.06
 VOLTS: 115.0
 HERTZ: 60
 START CAP: 0.00
 RUN CAP: 25.00
 COMMENT3:

DESCRIPTION: 0-SYNC
 BDT: 14.60
 MT: 14.60
 SF: 0.00
 LRT: 8.56
 LRA: 17.39
 PUT: 8.54
 COMMENT1:
 COMMENT2:
 COMMENT4: