

# PRODUCT INFORMATION PACKET



Model No: B972  
Catalog No: B972  
Pool Pump Motor, 3/4-.10 HP, 1 Ph, 60 Hz, 115 V, 3600 RPM, M56C Frame, DP



Regal and Century are trademarks of Regal Rexnord Corporation or one of its affiliated companies.  
©2022 Regal Rexnord Corporation, All Rights Reserved. MC017097E





**Nameplate Specifications**

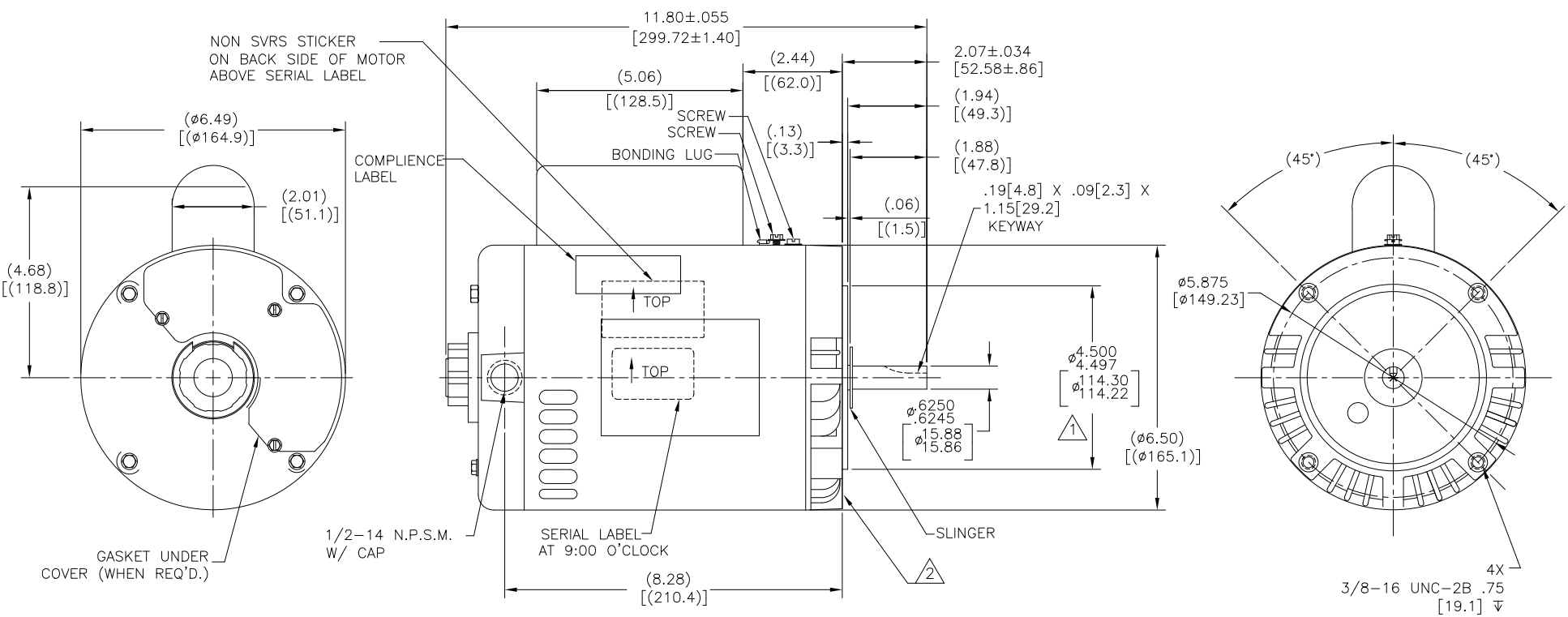
Output HP	<b>3/4-.10 Hp</b>	Output KW	<b>0.56 kW</b>
Frequency	<b>60 Hz</b>	Voltage	<b>115 V</b>
Current	<b>SF 11.2/5.0 A</b>	Speed	<b>3450/1725 rpm</b>
Service Factor	<b>1.5</b>	Phase	<b>1</b>
Duty	<b>Continuous</b>	Insulation Class	<b>B</b>
Frame	<b>M56C</b>	Enclosure	<b>Drip Proof</b>
Thermal Protection	<b>Thermally Protected</b>	Ambient Temperature	<b>40 °C</b>
UL	<b>Recognized</b>	CSA	<b>Y</b>
Number of Speeds	<b>2-2-VT</b>		

**Technical Specifications**

Electrical Type	<b>Permanent Split Capacitor, High Speed; Split Phase, Low Speed</b>	Poles	<b>2/4</b>
Rotation	<b>Counterclockwise Pump End</b>	Mounting	<b>C Face</b>
Motor Orientation	<b>Horizontal</b>	Drive End Bearing	<b>Ball</b>
Opp Drive End Bearing	<b>Ball</b>	Frame Material	<b>Rolled Steel</b>
Shaft Type	<b>5/8 KEYED</b>	Overall Length	<b>11.80 in</b>
Frame Length	<b>6.75 in</b>	Shaft Diameter	<b>0.625 in</b>
Shaft Extension	<b>2.07 in</b>		
Outline Drawing	<b>B972-S01</b>	Connection Drawing	<b>17888703.PCX</b>

This is an uncontrolled document once printed or downloaded and is subject to change without notice. Date Created:11/28/2022

REV	ECO	REV BY	DATE	APPD	DATE
D	ECR-0211353	SHESHI	09/30/2021	D.SURYAWANSHI	09/30/2021



NAMEPLATE DATA	EXTERNAL CONNECTION DIAGRAM	NOTES
MODEL: 177057 CUST PN: B972 HP: 3/4 - .10 SF: 1.50 ROT: CCWPE RPM: 3450/1725 TYPE: CXPM CODE: H FORM: FRAME: M 56 C VOLTS: 115 AMPS: MAX AMPS: SF AMPS: 11.2/5.0 PH: 1 HZ: 60 INS: B AMB: 40°C DUTY: CONT ENCLOSURE: ODP THERMALLY PROTECTED		1. PILOT DIAMETER IS CONCENTRIC WITH SHAFT & WITHIN .004[.10] T.I.R. 2. FACE OF MOUNTING FLANGE IS PERPENDICULAR TO SHAFT & WITHIN .004[.10] T.I.R. 3. SHAFT RUNOUT NOT TO EXCEED .002[.05] T.I.R. 4. END PLAY NOT TO EXCEED .010[.25] MEASURED WITH NO THRUST 5. FINISH PAINT TO BE BLACK

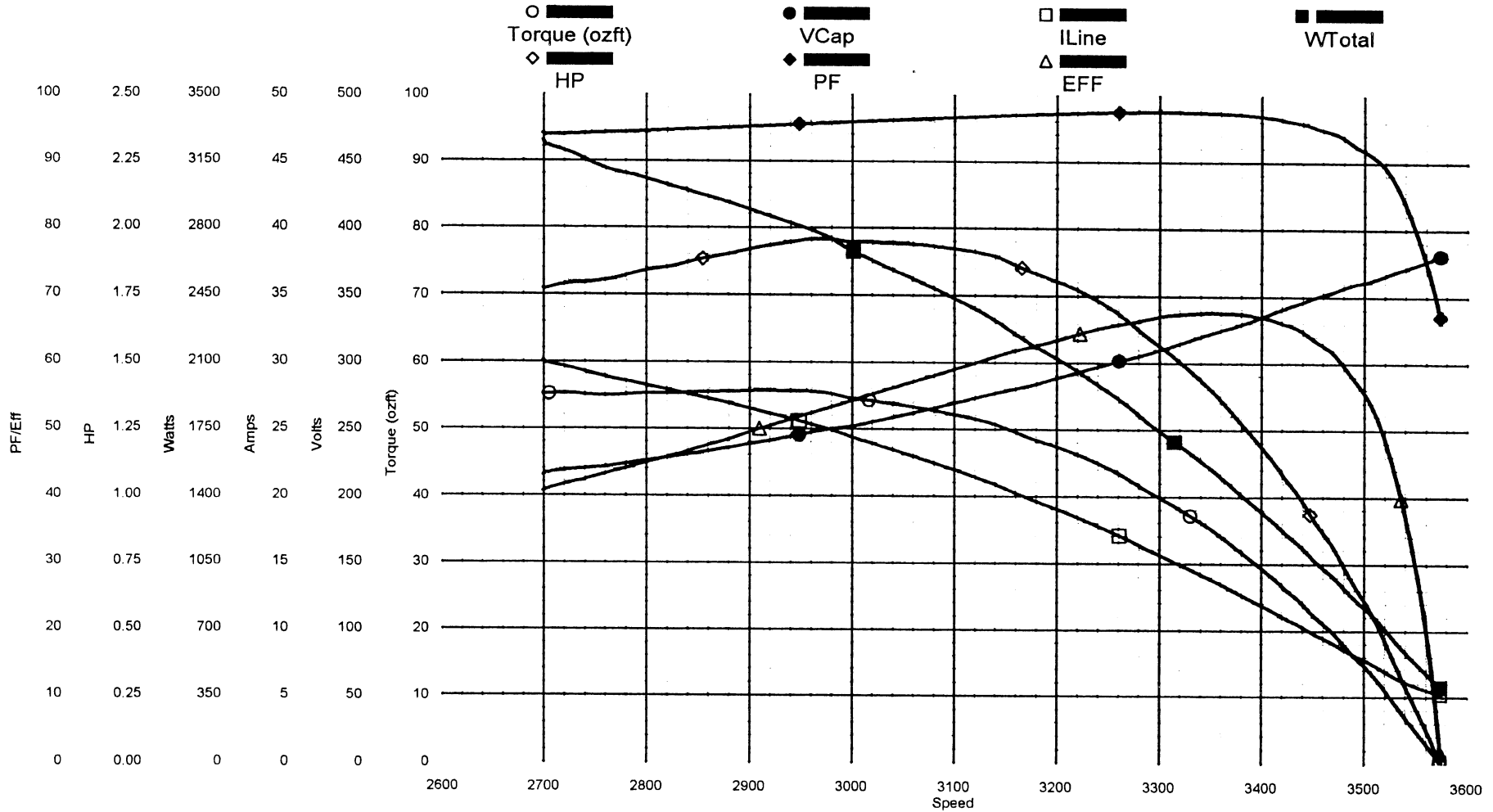
PERFORMANCE CURVE	APPROVED SAMPLE	<b>GEOMETRIC CHARACTERISTICS &amp; SYMBOLS</b> □ FLATNESS — STRAIGHTNESS ∠ ANGULARITY ⊥ PERPENDICULARITY (SQUARENESS) // PARALLELISM ○ ROUNDNESS (CIRCULARITY) ⊙ CYLINDRICITY ⊖ PROFILE OF ANY SURFACE ⊖ PROFILE OF ANY LINE ⌀ RUNOUT ⊕ TRUE POSITION ⊙ CONCENTRICITY = SYMMETRY	<b>UNLESS OTHERWISE SPECIFIED DIM. TOLERANCES ARE AS FOLLOWS:</b> INCH ±.1 ±.02 ±.005 ±.0005 mm ±0.5 ±0.13 ±0.013 ANG. ±.50 DEG REMOVE BURRS & BREAK SHARP EDGES: INCH .003-.015 mm 0.1-0.4 CORNER FILLETS TO: INCH .020 mm 0.5 MACHINE SURFACES: INCH 125 mm 3.2	DR BY: T.REYES	06-12-2006
16331911	CSA			APPD:	
UL COMPONENT	FILE# CCN# FILE# GUIDE#			THIRD ANGLE PROJECTION	EDS DATE 02-22-2008 FORMAT REV G
E14663 XZWR2 LR4642 4211-01				CONFIDENTIAL: THIS DRAWING AND ITS INFORMATION ARE THE EXCLUSIVE AND CONFIDENTIAL PROPERTY OF REGAL-BELOIT CORPORATION AND ARE NOT TO BE DISCLOSED, DUPLICATED, DISTRIBUTED OR OTHERWISE USED WITHOUT THE WRITTEN CONSENT OF REGAL-BELOIT CORPORATION. -ALL RIGHTS RESERVED.	
CUSTOMER	DISTRIBUTION				

		DESCRIPTION	MODEL-CFHP-56FR OUTLINE
SIZE	C	DWG NO	B972
SCALE	NONE		SHEET 1

# AO Smith

Performance Down    Project: 0444174 (High Speed)

Wednesday, September 08, 2004 05:41 AM



TRACKING #: 10028803  
 SBU: Pump  
 ENGINEER: JAMIE WATKINS  
 TECHNICIAN: DAN  
 BENCH: 2  
 TORQUE CELL: 350 lb-in  
 NP RPM: 3450  
 # SPEEDS: 2  
 MOTOR #: 1  
 TYPE: CXPM

CUSTOMER: A. O. SMITH  
 MODEL: 0444174A  
 FRAME: M56J  
 PHASES: 1  
 HP: 0.75  
 VOLTS: 115.0  
 HERTZ: 60  
 START CAP: 0.00  
 RUN CAP: 25.00  
 COMMENT3:

DESCRIPTION: OFFSET  
 BDT: 55.68  
 MT: 55.68  
 SF: 27.00  
 LRT: 0.00  
 LRA: 0.00  
 PUT: 0.00  
 COMMENT1:  
 COMMENT2:  
 COMMENT4:

HI SPEED (2 POLE)

LOCK AMPS: 43.6A

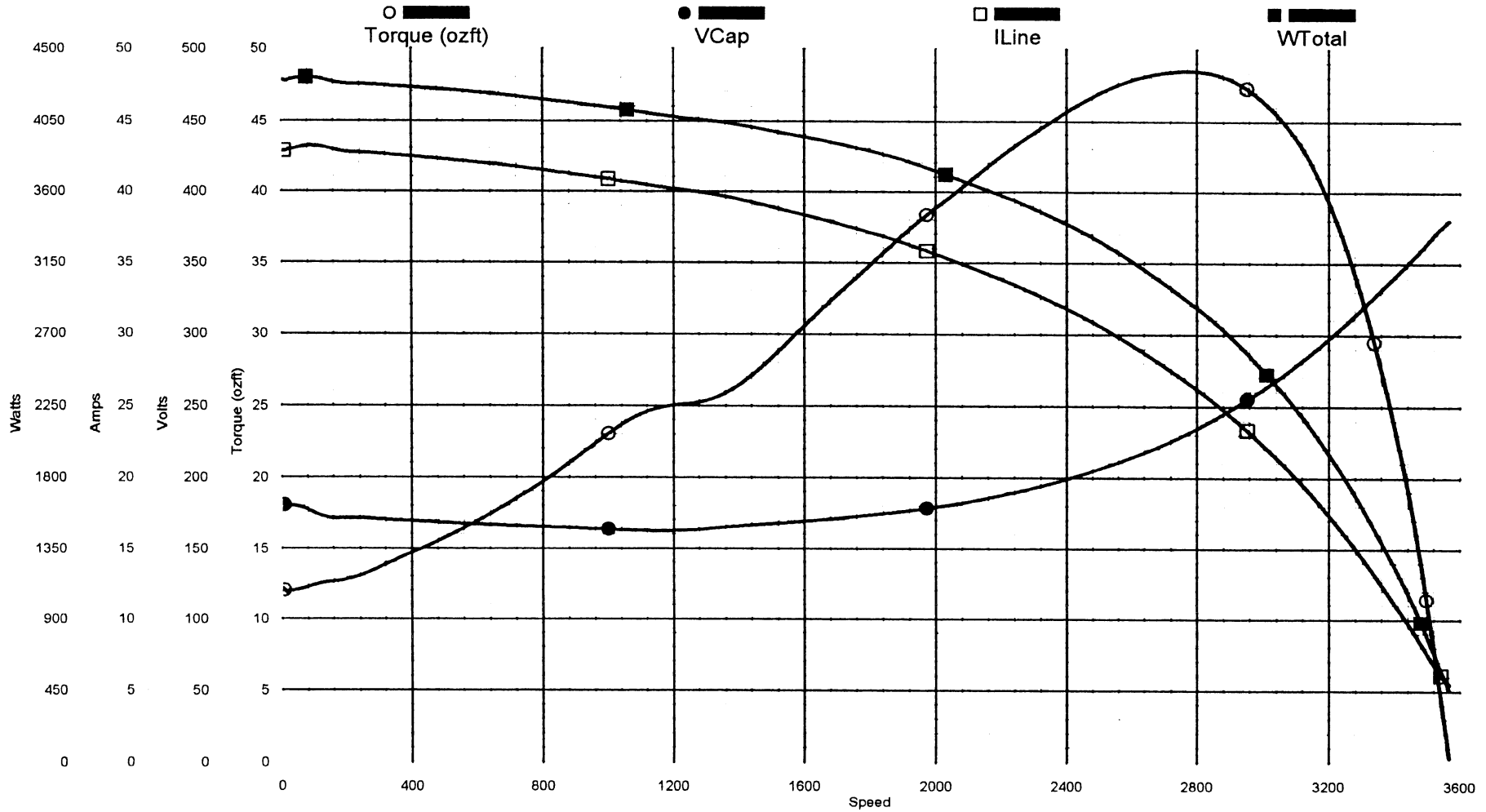
LOCK TORQUE: 13.2 oz-ft

BREAKDOWN  
 TORQUE: 55.6 oz-ft

# AO Smith

Performance Up    Project: 0444174 (High Speed)

Wednesday, September 08, 2004 05:57 AM



TRACKING #: 10028803  
 SBU: Pump  
 ENGINEER: JAMIE WATKINS  
 TECHNICIAN: DAN  
 BENCH: 2  
 TORQUE CELL: 350 lb-in  
 NP RPM: 3450  
 # SPEEDS: 2  
 MOTOR #: 1  
 TYPE: CXPM

H1 SPEED (2 POLE)

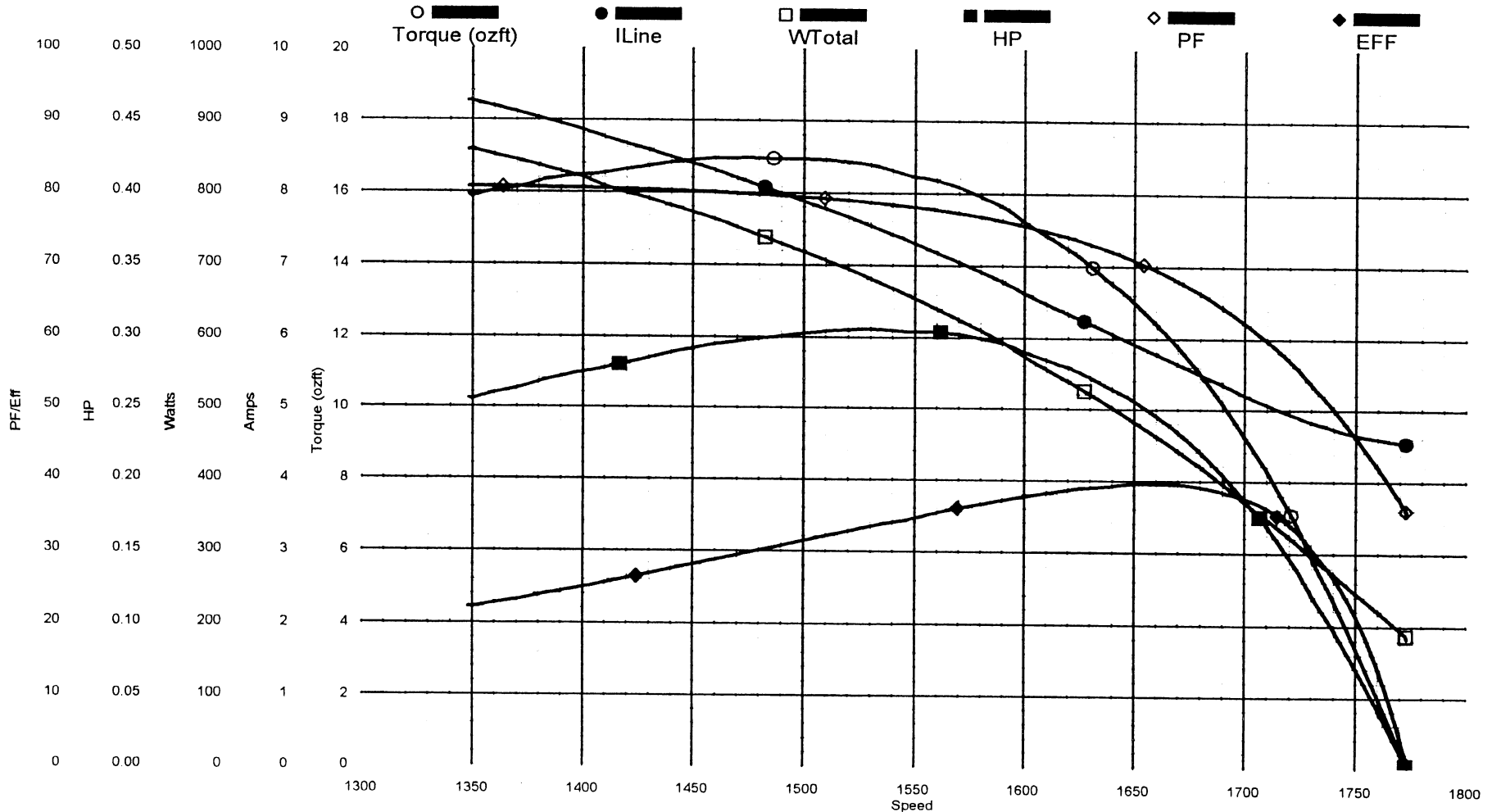
CUSTOMER: A. O. SMITH  
 MODEL: 0444174A  
 FRAME: M56J  
 PHASES: 1  
 HP: 0.75  
 VOLTS: 115.0  
 HERTZ: 60  
 START CAP: 0.00  
 RUN CAP: 25.00  
 COMMENT3:

DESCRIPTION: 0-SYNC  
 BDT: 48.48  
 MT: 48.48  
 SF: 27.00  
 LRT: 12.22  
 LRA: 42.84  
 PUT: 11.81  
 COMMENT1:  
 COMMENT2:  
 COMMENT4:

# AO Smith

Performance Down Project: 0444174 (Low Speed)

Wednesday, September 08, 2004 06:20 AM



TRACKING #: 10028803  
 SBU: Pump  
 ENGINEER: JAMIE WATKINS  
 TECHNICIAN: DAN  
 BENCH: 2  
 TORQUE CELL: 350 lb-in  
 NP RPM: 1725  
 # SPEEDS: 2  
 MOTOR #: 1  
 TYPE: CXPM

CUSTOMER: A. O. SMITH  
 MODEL: 0444174A  
 FRAME: M56J  
 PHASES: 1  
 HP: 0.10  
 VOLTS: 115.0  
 HERTZ: 60  
 START CAP: 0.00  
 RUN CAP: 25.00  
 COMMENT3:

DESCRIPTION: OFFSET  
 BDT: 16.95  
 MT: 16.97  
 SF: 7.30  
 LRT: 0.00  
 LRA: 0.00  
 PUT: 0.00  
 COMMENT1:  
 COMMENT2:  
 COMMENT4:

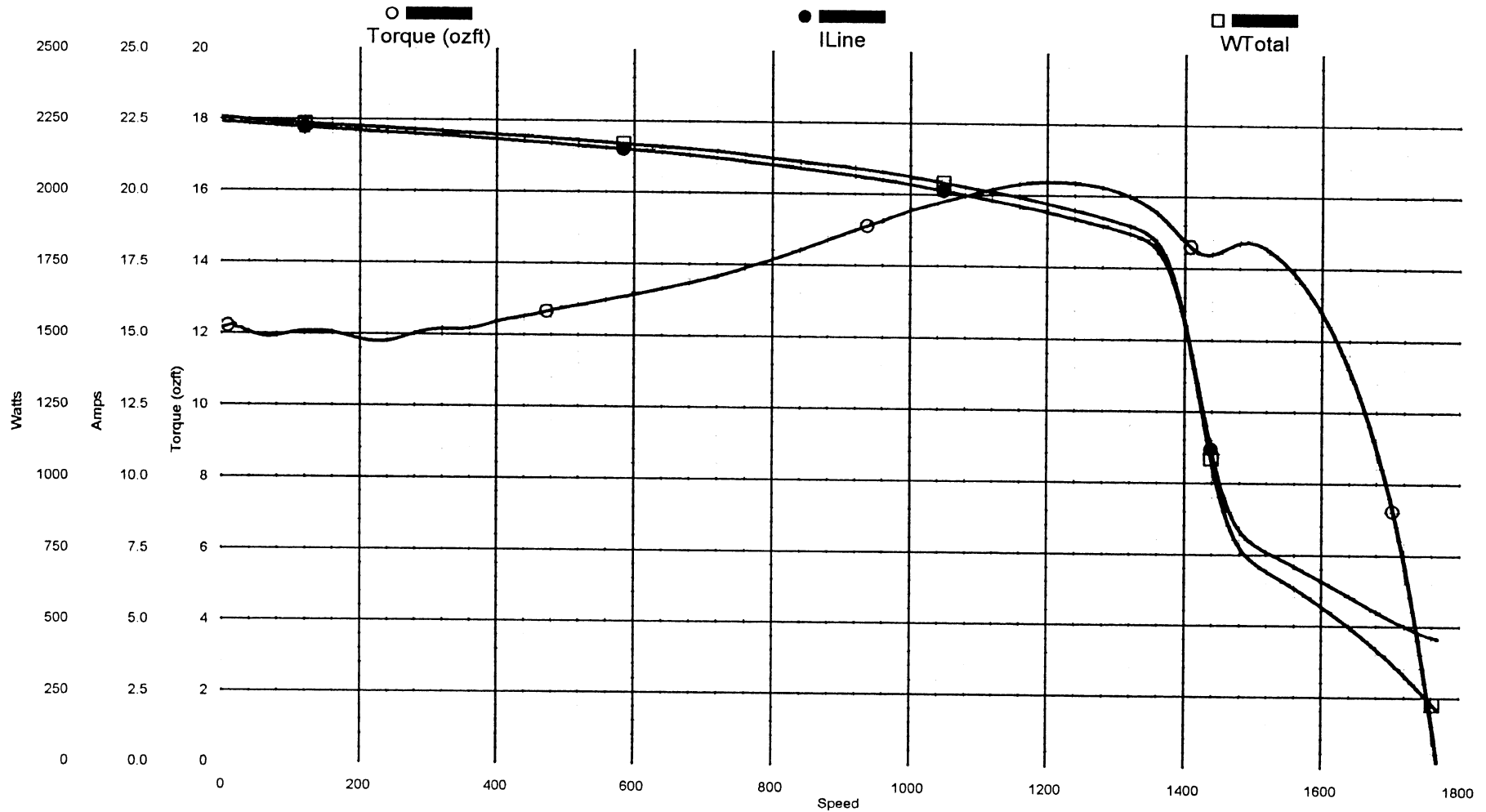
LOW SPEED (4 POLE)

LOCK AMPS: 22.7A  
 LOCK TORQUE: 12.0 oz-ft  
 BREAKDOWN TORQUE: 16.9 oz-ft

# AO Smith

Performance Up Project: 0444174 (Low Speed)

Wednesday, September 08, 2004 06:36 AM



TRACKING #: 10028803

SBU: Pump

ENGINEER: JAMIE WATKINS

TECHNICIAN: DAN

BENCH: 2

TORQUE CELL: 350 lb-in

NP RPM: 1725

# SPEEDS: 2

MOTOR #: 1

TYPE: CXPM

LOW SPEED (4 POLE)

CUSTOMER: A. O. SMITH

MODEL: 0444174A

FRAME: M56J

PHASES: 1

HP: 0.10

VOLTS: 115.0

HERTZ: 60

START CAP: 0.00

RUN CAP: 25.00

COMMENT3:

DESCRIPTION: 0-SYNC

BDT: 14.73

MT: 16.37

SF: 7.30

LRT: 12.14

LRA: 22.40

POT: 11.78

COMMENT1:

COMMENT2:

COMMENT4: