

PRODUCT INFORMATION PACKET



Model No: BDH1106

Catalog No: BDH1106

Fan and Blower Motor, 1 HP, 1 Ph, 60 Hz, 460 V, 1100 RPM, 3 Speed, 48 Frame, OPEN



Regal and Century are trademarks of Regal Rexnord Corporation or one of its affiliated companies.
©2024 Regal Rexnord Corporation, All Rights Reserved. MC017097E





Nameplate Specifications

Phase	1	Output HP	1 Hp
Output KW	0.75 kW	Voltage	460 V
Speed	1100 rpm	Service Factor	1
Frame	48Y	Enclosure	Open Enclosed
Thermal Protection	Automatic	Ambient Temperature	40 °C
Frequency	60 Hz	Current	3.2 A
Duty	Air Over	Insulation Class	B
UL	Recognized	CSA	Y
CE	N	Number of Speeds	3

Technical Specifications

Electrical Type	Permanent Split Capacitor	Starting Method	Across The Line
Poles	6	Rotation	Reversible
Mounting	Round Belly Band	Motor Orientation	Horizontal
Drive End Bearing	Ball	Opp Drive End Bearing	Ball
Frame Material	Rolled Steel	Shaft Type	Flat
Overall Length	11.09 in	Frame Length	5.50 in
Shaft Diameter	0.500 in	Shaft Extension	4.5 in
Connection Drawing	614131-270	Outline Drawing	BDH1106-S01

This is an uncontrolled document once printed or downloaded and is subject to change without notice. Date Created:06/19/2024

GENERAL INFORMATION:

SHAFT RUNOUT: .001[.03] T.I.R. PER INCH LENGTH OF EXTENSION.

BEARINGS: BALL

MOUNTING POSITION: HORIZONTAL

ELECTRICAL DATA:

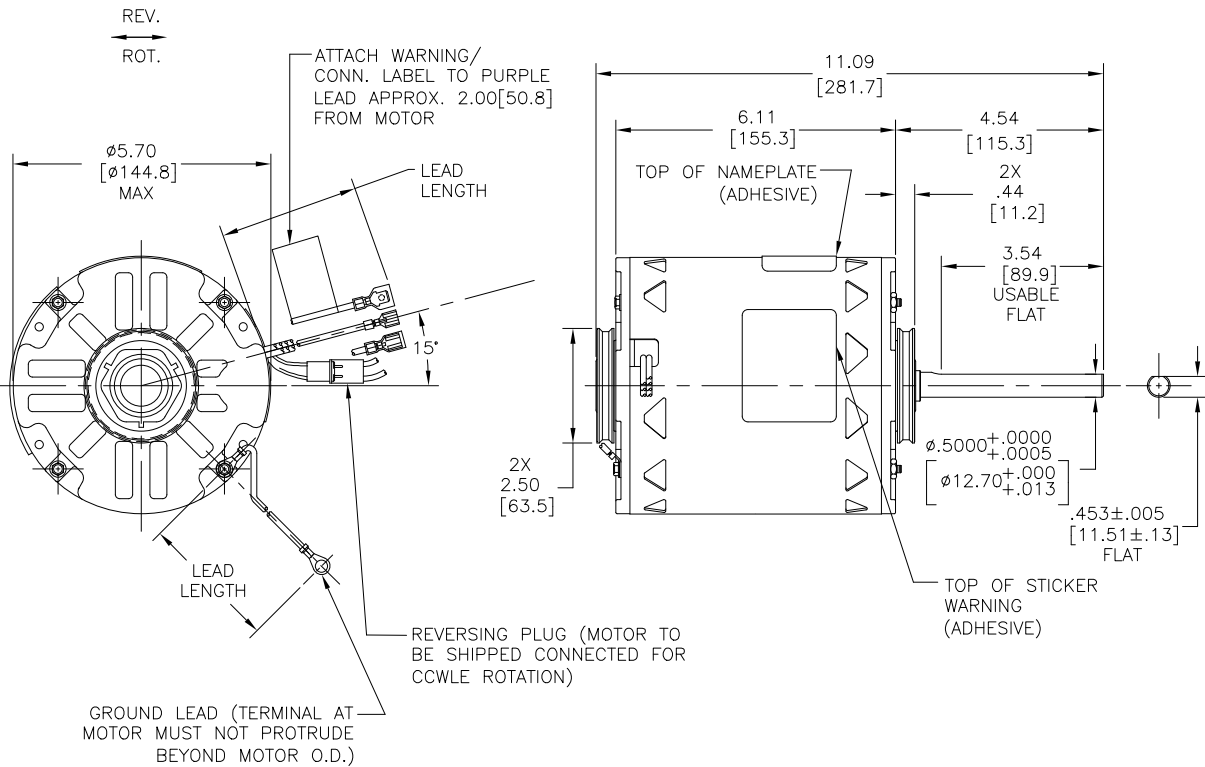
OVERLOAD PROTECTOR: AUTOMATIC RESET (T.I. 7AM 036)

LEADS: No. 18 GA .03[.8] THK XLP 125 °C INSUL

GROUND LEAD: No. 18 GA .03[.8] THK (GREEN) INSUL

NOTES:

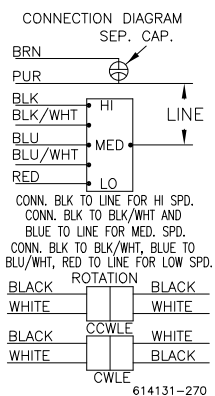
1. CTQ REQUIREMENT SEE EP000105-008.
2. RoHS & REACH ETC REQUIREMENT SEE EP000014



NAMEPLATE DATA:

MODEL: F48K47A01
 CUST: P/N BDH1106
 HP: 1
 ROT: REVERSIBLE
 RPM: 1100/3 SPD
 TYPE: UF
 FRAME: 48Y
 VOLTS: 460
 PH: 1
 AMPS: 3.2
 HZ: 60
 INS: B
 AMB: 40 °C
 DUTY: AIR OVER
 CAP: 15 MFD/370V
 ENCL: OPEN
 UL LOGO
 CSA LOGO
 THERMALLY PROTECTED

EXTERNAL CONNECTION DIAGRAM



GREEN (GRD)	12.0/14.0 [308/356]	.25[6.4] EYELET
BLACK & WHITE	3.0/5.0 [76/127]	REVERSING PLUG
BROWN	12.0/14.0 [308/356]	.25[6.4] FEMALE SPADE
PURPLE	12.0/14.0 [308/356]	.25[6.4] FEMALE SPADE
BLACK	36.0/39.0 [914/991]	.25[6.4] PRE-INSUL. FEMALE SPADE
BLACK/ WHITE	36.0/39.0 [914/991]	.25[6.4] PRE-INSUL. MALE TAB
BLUE	36.0/39.0 [914/991]	.25[6.4] PRE-INSUL. FEMALE SPADE
BLUE/WHITE	36.0/39.0 [914/991]	.25[6.4] PRE-INSUL. MALE TAB
RED	36.0/39.0 [914/991]	.25[6.4] PRE-INSUL. FEMALE SPADE
COLOR	LENGTH	TERMINAL OR STRIP LENGTH

REGAL-BELOIT CORPORATION (RBC) PROVIDES TECHNICAL ASSISTANCE TO OUR CUSTOMERS IN SEVERAL AREAS. SINCE RBC DOES NOT RECEIVE ALL DATA CONCERNING THE USE AND APPLICATION OF THE MOTOR, THE SUITABILITY OF THE MOTOR FOR THE APPLICATION MUST BE DETERMINED BY THE CUSTOMER.

DIMENSIONS WITHOUT TOLERANCES ARE FOR REFERENCE ONLY.

MAIN FR.-OLE	OPEN
END FR.-OLE	OPEN
MAIN FR.-LE	OPEN
END FR.-LE	OPEN

CUSTOMER	DISTRIBUTION SERVICE
----------	----------------------

PERFORMANCE CURVE NO.	TORQUE @ 1100 RPM (25°C)	APPROVED SAMPLE	UL COMPONENT FILE #	CCN #	CSA FILE #	CLASS #
C31341	85.2 OZ. FT.	97AC501A	E46412	PRGY2	LR43341	4211-01

CRITICAL TO QUALITY CHARACTERISTICS(CTQs)	DRAWING REVISION	REVISION BY	DATE
	ECO	MINJING JIANG	06-12-2024
P PROCESS	ECO	APPROVED BY	DATE
	ECR-0234757	DEXIANLU	06-12-2024
E ENGINEERING	REMOVE SPANISH NAMEPLATE		
A APPLICATION	COPYRIGHT REGAL-BELOIT AMERICA, INC. ALL RIGHTS RESERVED. REGAL-BELOIT AMERICA, INC. (OWNER) AND COMPANY'S PROPRIETARY INFORMATION. ANY PERSON, CORPORATION OR OTHER ENTITY, DUPLICATED, AND/OR USED, EXCEPT AS EXPRESSLY APPROVED IN WRITING IN ADVANCE BY OWNER. THIS DOCUMENT SHALL BE RETURNED TO OWNER UPON REQUEST. IT MAY BE SUBJECT TO CERTAIN RESTRICTIONS UNDER APPLICABLE EXPORT CONTROL LAWS AND REGULATIONS.		
B REGULATORY			
L LIFE			

ENCLOSURE	
DRAWN BY:	CARLOS CARRILLO
DATE:	08-05-2010
APPROVED BY:	SAMUEL JIMENEZ
DATE:	08-05-2010
REFERENCE	
THIRD ANGLE PROJECTION	
SIZE	DWG NO
C	BDH1106
REGAL-BELOIT America, Inc.	
MODEL-RFHP-48FR OUTLINE	
MATERIAL	PROCESS/FINISH
SHEET	1

Table #1

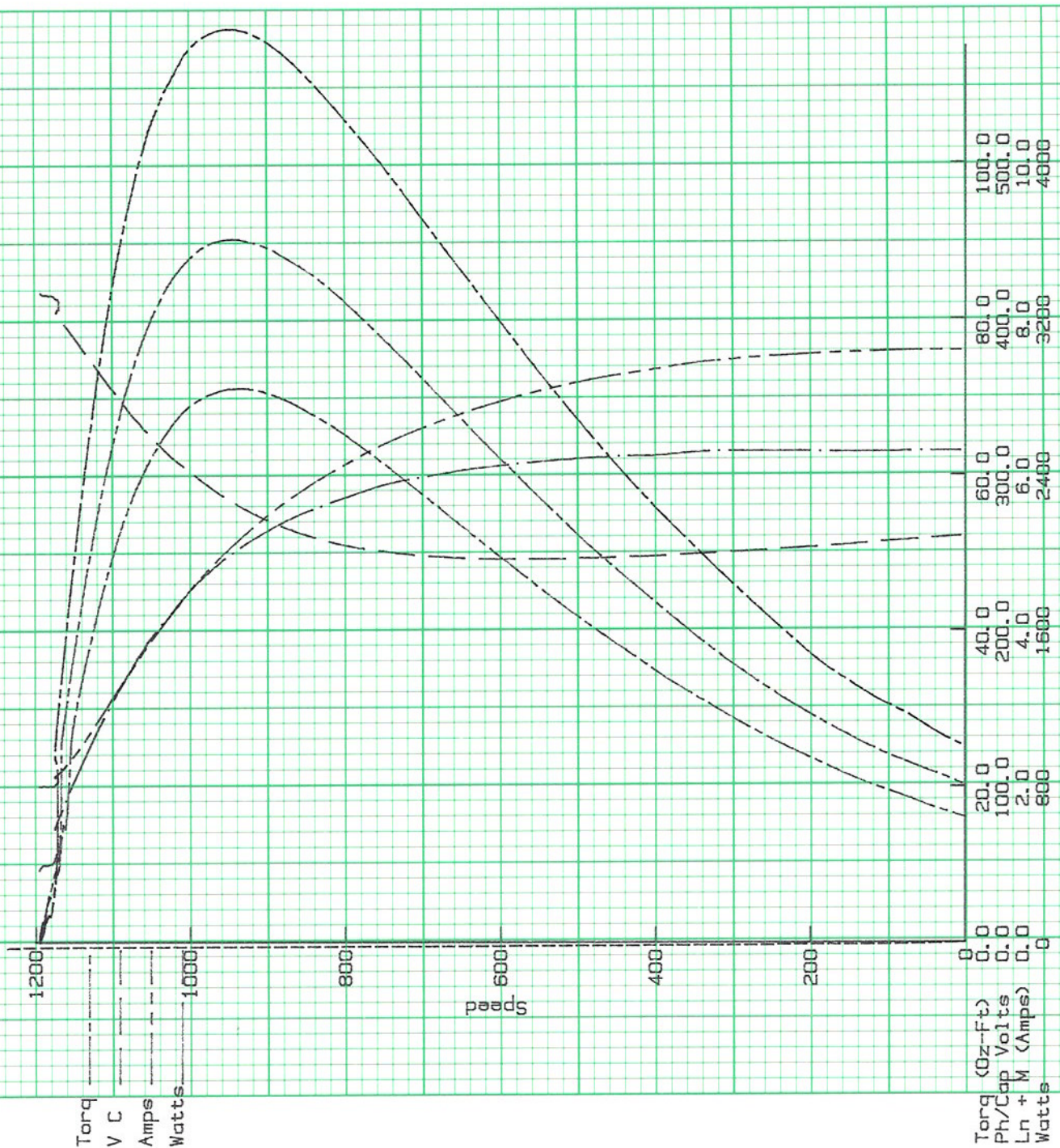
C31341

A. O. SMITH CORPORATION, ELECTRICAL PRODUCTS COMPANY

Type: FLL Fr: 48 HP: 1.00 Rot: CCW Model: 96AC077A
 Motor No.: 2 Volts: 460 RPM: 1100 Hz: 60 Cap: 15.9 mfd
 3/29/96 19:51:42

F48G81A50

~~C-96AC077A~~
C31341



NO. XY 1001-SP3

CAD ONE, INC.

Specification & Rating Report

Item Number: **BDH1106**Specification Number: **1**Model Number: **F48K47A01**Carton Label Model
Number:Customer Model
Number:

Agency Type:

CE: **N**CSA: **Y**UL: **Y**

UL Explosion Proof Rating:

Sample Number:

Customer Specification
Number:Catalog Number: **BDH1106**

CE Number:

CSA Number: **NO**UL Number: **NO**

Cubic Feet Per Minute:

F2 Assembly:

UPC Model Number: **786674013613**UPC Catalog Number: **786674013613**Nameplate Drive
Bearing Type:Nameplate Opposite
Drive Bearing Type:

Capacitor:

Capacitor Rating MFD: **15**

Control Code:

DC Design Number:

Form Factor:

Connection Diagram:

Lubrication Label
Diagram:Outline Diagram: **BDH1106-S01**Ambient Temperature: **40**Label Drive Bearing **BALL**
Type:Label Opposite Drive **BALL**
Bearing Type:Capacitor Included: **N**Capacitor Rating VAC: **370**

Design Status:

Features:

Installation Diagram:

Warning Label
Diagram:Outline Graphic: **16A**Insulation Class: **B**



Specification & Rating Report

Protector: AUTOMATIC	Thermal Protection:
Nameplate Overload:	Label Overload:
IP Code:	
Nameplate Enclosure: OPEN	Label Enclosure: OPEN
Frame Length: 5.5	Frame Length UOM:
Frame Diameter:	Frame Diameter UOM:
Frame Size: 48Y	
Frame Material: ROLLED STEEL	End Frame Material:
Operator Instruction Manual:	
Nameplate Mounting:	Label Mounting: BELLY BAND
Base Height:	Base Height UOM:
Ring Diameter:	RingDiameterUOM:
Nameplate:	Carton Label:
Nameplate Location L Format:	
Brake:	Tachometer:
Layer Quantity:	Pallet Quantity:
Phase: 1	CurrentType:
DC Pole:	
Poles: 6	
Speeds: 3	
Duty: AIR OVER	
Shaft Diameter: 1/2	Shaft Diameter UOM:
Shaft Extension: 4.5	Shaft Extension UOM:
Shaft Material:	Rotation: REVERSIBLE
Shaft Type: FLAT	
Motor Type: UF	
Motor Use:	
Nameplate 1:	
Nameplate 2:	
Nameplate Text 1:	



Specification & Rating Report

Nameplate Text 2:

Nameplate Text 3:

Nameplate Text 4:

Label Text 1: **PERMANENT**

SPLIT

CAPACITOR

Label Text 2:

Label Text 3:

Label Text 4:

Brand Line:

Vendor Line:

Motor Weight:

Motor Weight UOM:

Shipping Weight:

Shipping Weight UOM:

Armature Field
Winding:

Core Length:

Core Length UOM:

Winding Code:

Winding Specification:

Nameplate Only
Instructions:

Nameplate & Label
Instructions:

Label Only
Instructions:

Specification & Rating Report



Rating Number: 1

Horsepower: 1

Volts: **460**

Hertz: **60**

Field Current:

Revolutions Per Minute: **1100/3 SPD**

Service Factor: **1.0**

Service Factor Amps:

NEMA Code:

NEMA Design:

Customer Nameplate Number:

Kilowatts:

Amps: **3.2**

Maximum Amps:

Armature Current:

Power Factor:

Service Factor Volts:

NEMA Nominal Efficiency: **66.6**

NEMA Guaranteed Efficiency: