

PRODUCT INFORMATION PACKET



Model No: BLR6406V1
Catalog No: BLR6406V1

Fan and Blower Motor, 1/10 HP, 1 Ph, 60 Hz, 115 V, 1050 RPM, 1 Speed, 42 Frame, OAO



Regal and Century are trademarks of Regal Rexnord Corporation or one of its affiliated companies.
©2025 Regal Rexnord Corporation, All Rights Reserved. MC017097E





Nameplate Specifications

Phase	1	Output HP	1/10 Hp
Output KW	0.07 kW	Voltage	115 V
Speed	1050 rpm	Service Factor	1.0
Frame	42Y	Enclosure	Open Air Over
Thermal Protection	Automatic	Ambient Temperature	40 °C
Frequency	60 Hz	Current	4.0 A
Duty	Air Over	Insulation Class	B
UL	Recognized	CSA	N
CE	N	Number of Speeds	1

Technical Specifications

Electrical Type	Shaded Pole	Starting Method	Across The Line
Poles	6	Rotation	Counterclockwise Lead End
Mounting	Extended Studs	Motor Orientation	Horizontal
Drive End Bearing	Sleeve	Opp Drive End Bearing	Sleeve
Frame Material	Na	Shaft Type	Flat
Overall Length	6.35 in	Shaft Diameter	0.375 in
Shaft Extension	1.9 in		
Outline Drawing	BLR6406V1-S01	Connection Drawing	263B331F01

This is an uncontrolled document once printed or downloaded and is subject to change without notice. Date Created:02/10/2025

GENERAL INFORMATION:

SHAFT RUNOUT: .001 [.025] T.I.R. PER INCH LENGTH OF EXTENSION

END PLAY: .010[.254] TO .063[1.600]

BEARINGS: SLEEVE

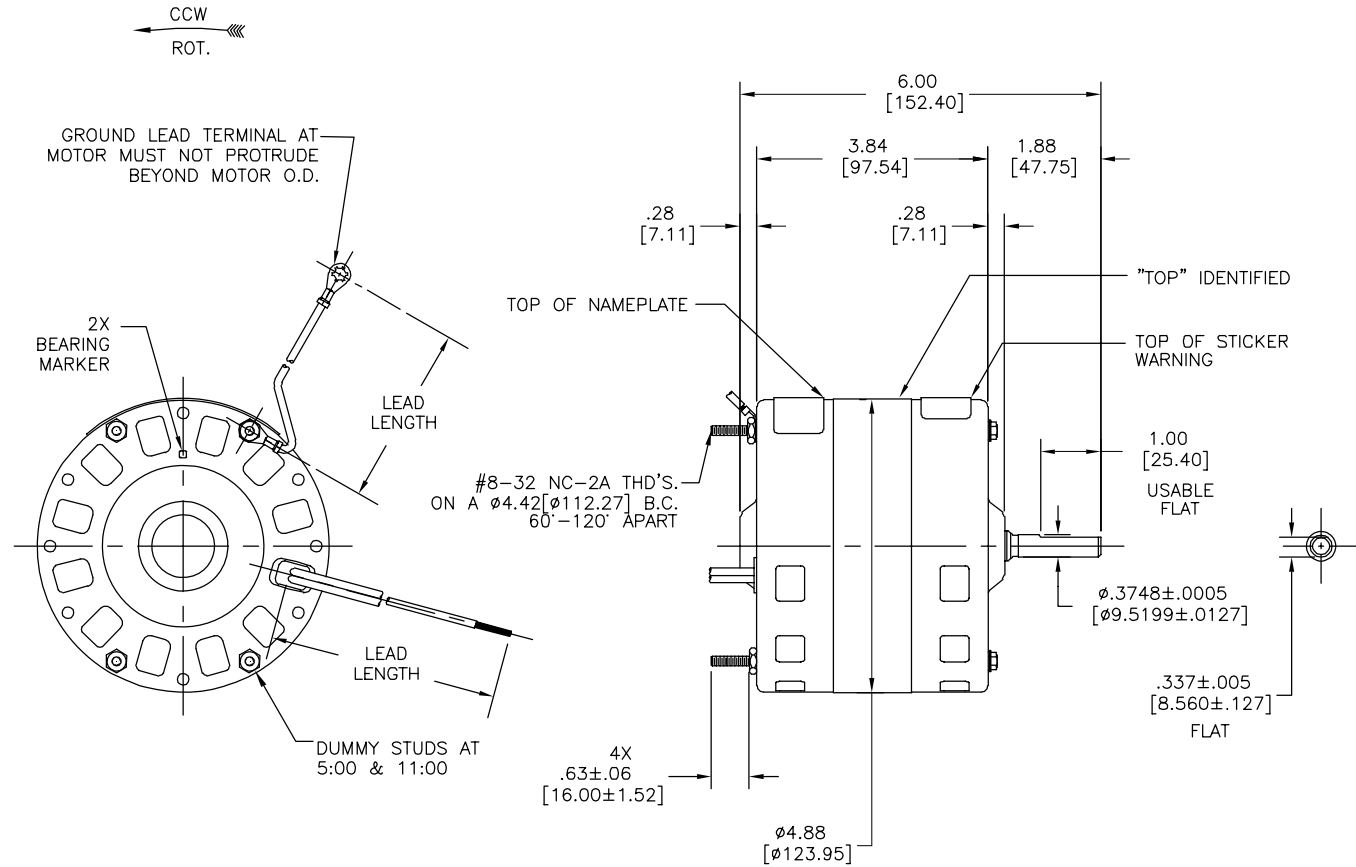
MOUNTING POSITION: HORIZONTAL

ELECTRICAL DATA:

OVERLOAD PROTECTOR: AUTOMATIC RESET (T.I. 7AM 304)

LEADS: NO. 18 GA., .06 [1.52] THK., PVC 105°C INSUL.

GROUND LEAD: NO. 18 GA., .03 [.76] THK., GREEN INSUL.



NAMEPLATE DATA:	EXTERNAL CONNECTION DIAGRAM
MODEL NO.: B42AA03A01 CUST. P/N: BLR6406V1 HP: 1/10 ROT.: CCWLE RPM: 1050 TYPE: FE FRAME: 42Y VOLTS: 115 PH: 1 AMPS: 4.0 HZ: 60 INS.: B AMB.: 40°C DUTY: AIR OVER CAP.: - ENCL.: - UL LOGO CSA LOGO THERMALLY PROTECTED	

PERFORMANCE CURVE NO.	TORQUE @ 1050 RPM (25°C)	APPROVED SAMPLE	UL COMPONENT		CSA	
			FILE #	CCN #	FILE #	CLASS #
C0000830	10.13 OZ. FT.	X-0007838	E46412	PRGY2	LR43341	4211-01

COLOR	LENGTH	TERMINAL OR STRIP LENGTH
GREEN GROUND	11/13 [279/330]	#10 EYELET
BLACK	20/22 [508/558]	.50[12.70] STRIP
WHITE	20/22 [508/558]	.50[12.70] STRIP

LEAD DATA

REGAL-BELOIT CORPORATION (RBC) PROVIDES TECHNICAL ASSISTANCE TO OUR CUSTOMERS IN SEVERAL AREAS. SINCE RBC DOES NOT RECEIVE ALL DATA CONCERNING THE USE AND APPLICATION OF THE MOTOR, THE SUITABILITY OF THE MOTOR FOR THE APPLICATION MUST BE DETERMINED BY THE CUSTOMER.

DIMENSIONS WITHOUT TOLERANCES ARE FOR REFERENCE ONLY.

MAIN FRAME - OLE	OPEN
END FRAME - OLE	OPEN
MAIN FRAME - LE	OPEN
END FRAME - LE	OPEN

ENCLOSURE

CUSTOMER	DISTRIBUTION SERVICE
----------	----------------------

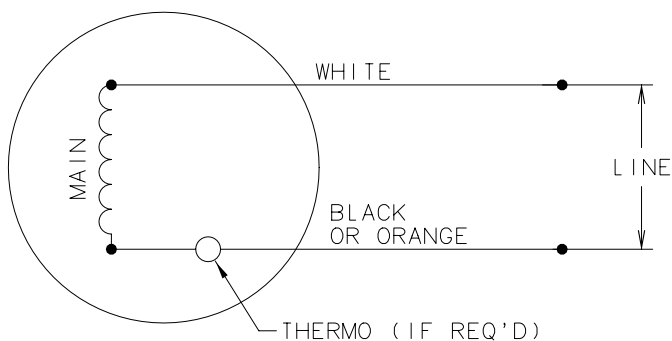
DRAWING REVISION	REVISION BY	DATE
A	G.ZHAO	06-09-2014
ECD 0051884	APPROVED BY J.ZHU	DATE 06-09-2014

ECD DESCRIPTION
NEW MODEL RELEASE

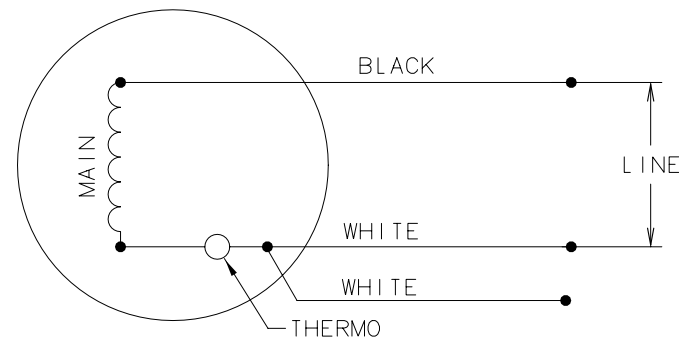
COPYRIGHT REGAL-BELOIT AMERICA, INC. ALL RIGHTS RESERVED. PROPRIETARY AND CONFIDENTIAL INFORMATION - THIS DOCUMENT IS THE PROPERTY OF REGAL-BELOIT AMERICA, INC. ("OWNER") AND CONTAINS OWNER'S PROPRIETARY INFORMATION. ANY PERSON, CORPORATION OR OTHER FIRM RECEIVING IT IS DEEMED, BY RECEIVING IT, TO AGREE THAT IT, AND/OR ANY PART OF IT, SHALL NOT BE DISCLOSED TO ANY PERSON, CORPORATION OR OTHER ENTITY, DUPLICATED, AND/OR USED, EXCEPT AS EXPRESSLY APPROVED IN WRITING IN ADVANCE BY OWNER. THIS DOCUMENT SHALL BE RETURNED TO OWNER UPON REQUEST. IT MAY BE SUBJECT TO CERTAIN RESTRICTIONS UNDER APPLICABLE EXPORT CONTROL LAWS AND REGULATIONS.

DRAWN BY: G.ZHAO	DATE: 06-09-2014	Regal Beloit America, Inc.
APPROVED BY: J.ZHU	DATE: 06-09-2014	
THIRD ANGLE PROJECTION	SIZE DWG NO: C	DESCRIPTION: MODEL-RFHP-42FR OUTLINE
		MATERIAL: - PROCESS/FINISH: -
		SHEET 1

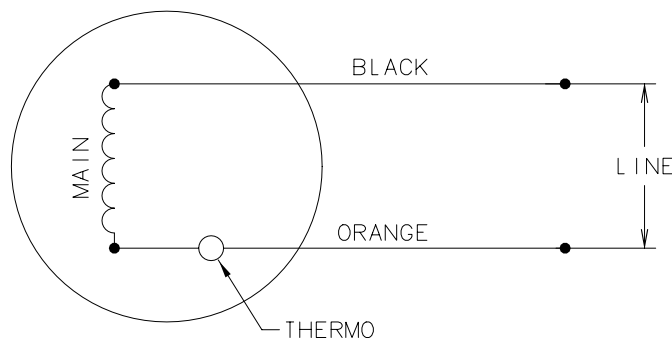
263B331



SINGLE SPEED, FIG. 1



SINGLE SPEED, FIG. 2



SINGLE SPEED, FIG. 3


QUALITY CONTROL NOTE:
TO CHECK THE WDGS. FOR OPENS, VERIFY
THE CONTINUITY AS FOLLOWS:

FIG. 1--BETWEEN THE WHITE AND BLACK (OR ORANGE) LEADS

FIG. 2--BETWEEN THE WHITE & BLACK LEADS

FIG. 3--BETWEEN THE BLACK & ORANGE LEADS

DATE	CHANGED FROM	APPROVED ENG DRF	NOTICE	DATE	CHANGED FROM	APPROVED ENG DRF	NOTICE
				07/09/03	REDRAWN TO CAD	KAKKAG	0343946

GEOMETRIC CHARACTERISTICS & SYMBOLS □ FLATNESS — STRAIGHTNESS < ANGULARITY ⊥ PERPENDICULARITY (SQUARENESS) // PARALLELISM ○ ROUNDNESS (CIRCULARITY) Ⓜ CYLINDRICITY △ PROFILE OF ANY SURFACE Ⓢ PROFILE OF ANY LINE Ⓡ RUNOUT ⊕ TRUE POSITION ⊙ CONCENTRICITY = SYMMETRY	UNLESS OTHERWISE SPECIFIED DIMENSION TOLERANCES ARE AS FOLLOWS INCHES .XX .XXX .XX ±.02 ±.005 METRIC ±.5 ±.13 ANGLES ±.50 DEG REMOVE BURRS AND BREAK SHARP EDGES .003-.015 CORNER FILLETS TO .020 MACHINE SURFACES 125 ✓	MATERIAL — PROCESS —	DRAWN SMITH 03/10/69 APPROVED BATH 03/17/69 REFERENCE — APPLICATION — USER/FILIER42/CONEXT	A.O. SMITH A DIVISION OF A.O. SMITH CORPORATION ELECTRICAL PRODUCTS COMPANY TIPP CITY, OHIO  COPYRIGHT 1995	DESCRIPTION CONN. DIAGRAM
	CONFIDENTIAL: THIS DRAWING AND ITS INFORMATION ARE THE EXCLUSIVE AND CONFIDENTIAL PROPERTY OF A.O. SMITH CORP. AND ARE NOT TO BE DISCLOSED, DUPLICATED, DISTRIBUTED OR OTHERWISE USED WITHOUT THE WRITTEN CONSENT OF A.O. SMITH CORP. - ALL RIGHTS RESERVED	SIZE B	PART NUMBER 263B331	SCALE — NOTICE — SHEET 1	