

# PRODUCT INFORMATION PACKET



Model No: BN36

Catalog No: BN36

Pool Pump Motor, 3/4 - .10 HP, 1 Ph, 60 Hz, 115 V, 3600 RPM, R48Y Frame, DP



Regal and Century are trademarks of Regal Rexnord Corporation or one of its affiliated companies.  
©2022 Regal Rexnord Corporation, All Rights Reserved. MC017097E





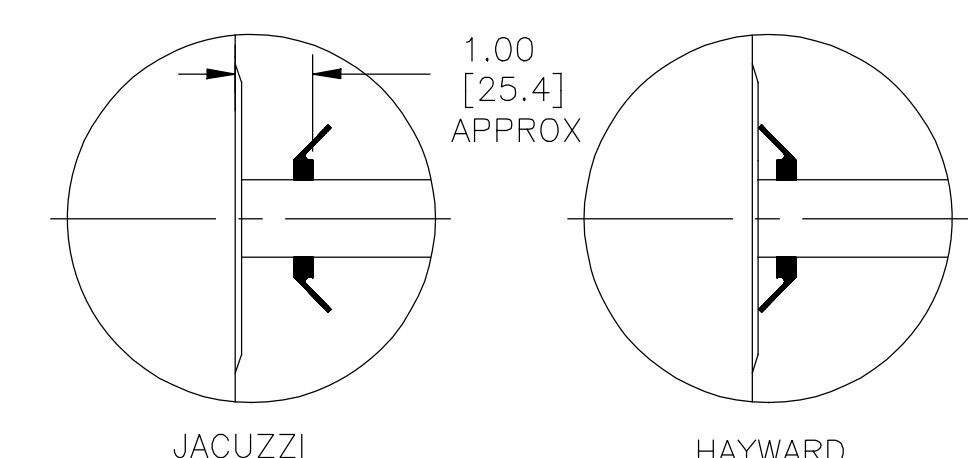
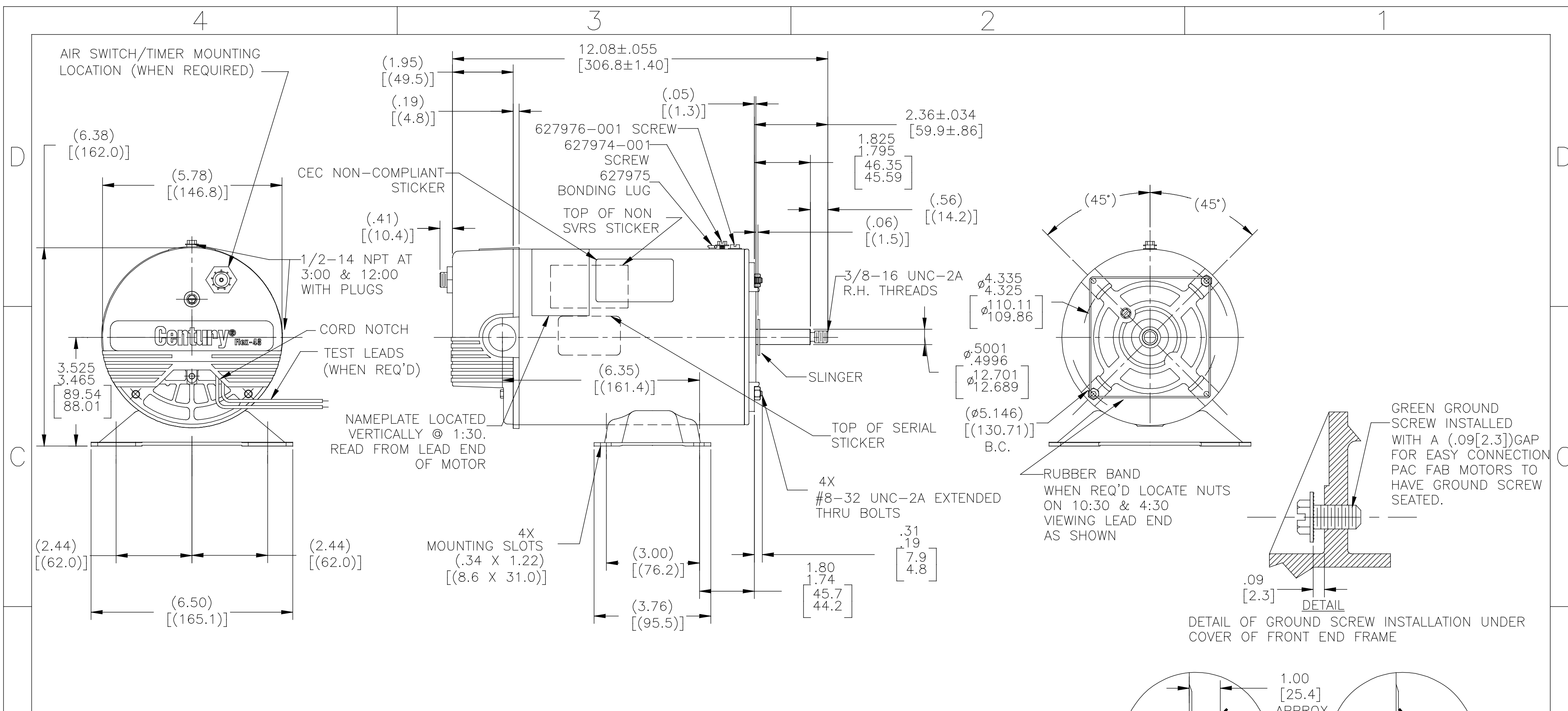
**Nameplate Specifications**

Output HP	<b>3/4 - .10 Hp</b>	Output KW	<b>0.56 kW</b>
Frequency	<b>60 Hz</b>	Voltage	<b>115 V</b>
Current	<b>8.8/2.6 A</b>	Speed	<b>3450/1725 rpm</b>
Service Factor	<b>1</b>	Phase	<b>1</b>
Duty	<b>Continuous</b>	Insulation Class	<b>B</b>
Frame	<b>R48Y</b>	Enclosure	<b>Drip Proof</b>
Thermal Protection	<b>Thermally Protected</b>	Ambient Temperature	<b>40 °C</b>
UL	<b>Recognized</b>	CSA	<b>Y</b>
Number of Speeds	<b>2-2-VT</b>		

**Technical Specifications**

Electrical Type	<b>Split Phase, Induction Run, Multi-Speed</b>	Starting Method	<b>Across The Line</b>
Poles	<b>2/4</b>	Rotation	<b>Counterclockwise Pump End</b>
Mounting	<b>Thru Bolt</b>	Motor Orientation	<b>Horizontal</b>
Drive End Bearing	<b>Ball</b>	Opp Drive End Bearing	<b>Ball</b>
Frame Material	<b>Rolled Steel</b>	Shaft Type	<b>3/8 Threaded</b>
Overall Length	<b>12.08 in</b>	Frame Length	<b>7.25 in</b>
Shaft Diameter	<b>0.500 in</b>	Shaft Extension	<b>2.36 in</b>
Outline Drawing	<b>BN36-S01</b>	Connection Drawing	<b>17888724.PCX</b>

This is an uncontrolled document once printed or downloaded and is subject to change without notice. Date Created:11/28/2022



OPTIONAL SLINGER 11020806 ,WHEN REQ'D, MOUNT FLUSH AGAINST END FRAME HUB WITH OUTSIDE DIAMETER TOWARD END FRAME FOR HAYWARD. FOR JACUZZI, MOUNT AWAY FROM END FRAME, APPROX. 1.00[25.4] FROM END FRAME OR HALFWAY DOWN SHAFT.

NAMEPLATE DATA	EXTERNAL CONNECTION DIAGRAM	NOTES
MODEL: 177781 CUST PN: BN36 HP: - SF: - ROT: CCWPE RPM: 3450/1725 TYPE: SPM CODE: A FORM: - FRAME: R48Y VOLTS: 115 AMPS: 8.8/2.6 MAX AMPS: - SF AMPS: - PH: 1 HZ: 60 INS: B AMB: 40°C DUTY: CONT ENCLOSURE: ODP THERMALLY-PROTECTED	178887-24 	<ol style="list-style-type: none"> <li>THE BOTTOM TWO THRU BOLTS IN SHAFT END END FRAME ARE TO BE PARALELL TO BASE WITHIN (.060)[(1.52)].</li> <li>LEAD END FRAME TO BE ORIENTED TO DRIVE END FRAME TO WITHIN ±2°.</li> <li>ALL DIMENSIONS SHOWN IN PARENTHESIS ARE REFERENCE DIMENSIONS.</li> </ol>

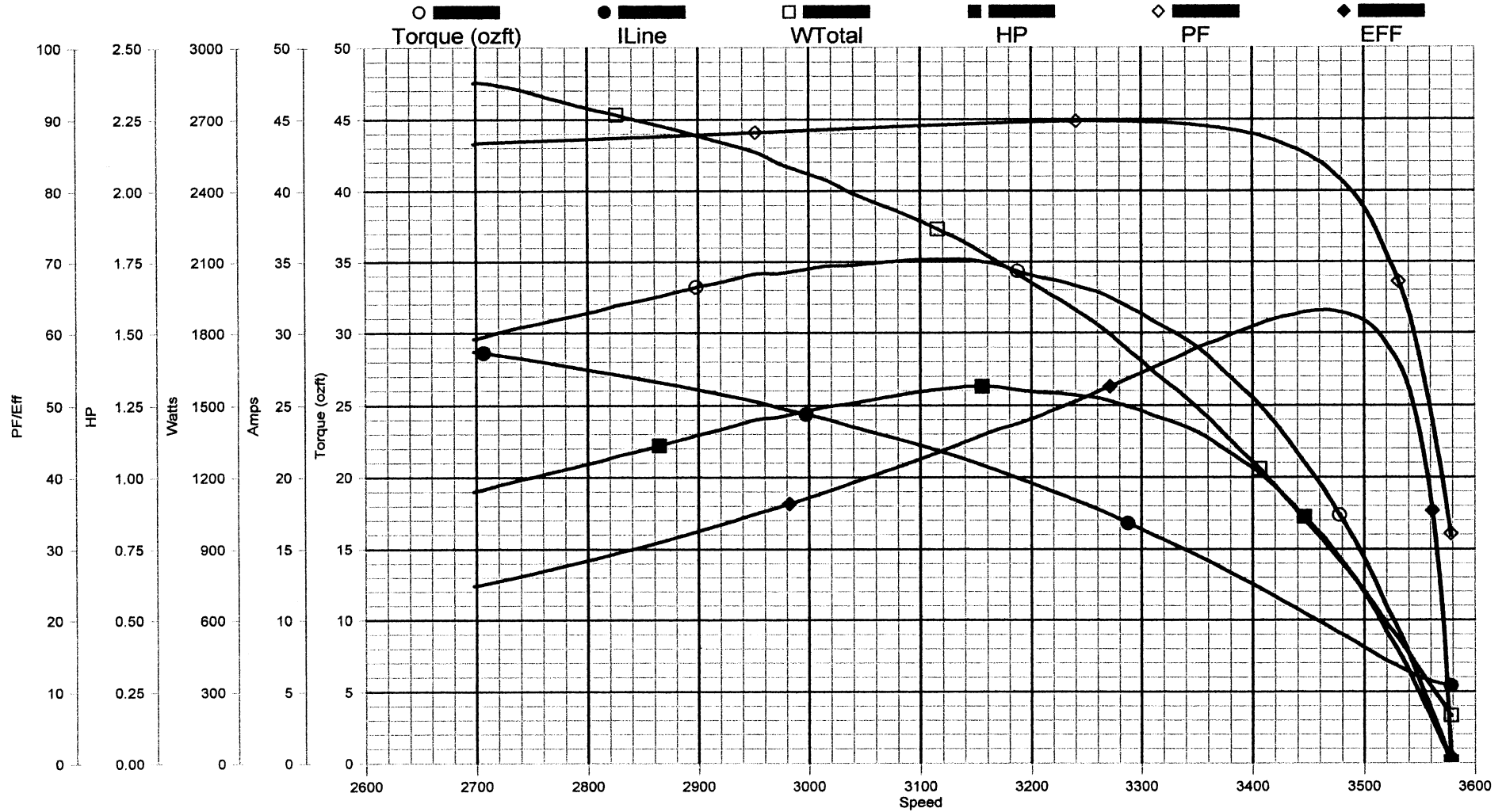
PERFORMANCE CURVE	APPROVED SAMPLE		
17118811	-		
UL COMPONENT	CSA		
FILE#	CCN#	FILE#	GUIDE#
E14663	XEWR2	LR4642	4211-01
CUSTOMER	DISTRIBUTION		

DRAWING REVISION	REVISION BY	DATE	TOLERANCES UNLESS OTHERWISE SPECIFIED	DRAWN BY:	Regal Beloit America, Inc.
G	G. RODRIGUEZ	04-26-2019	DEC. INCH mm ANGLE	T.REYES	
ECO	APPROVED BY	DATE	.XX ±0.1 [±2.5] ±0.5°	DATE:	
ECO-0165900	G. RODRIGUEZ	04-26-2019	.XX ±0.02 [±0.51]	08-16-2010	
ECO DESCRIPTION			.XXX ±0.005 [±0.127]	APPROVED BY:	DESCRIPTION
SEE ECO			.XXXX ±0.0005 [±0.0127]	S.JIMENEZ	
COPYRIGHT REGAL BELOIT AMERICA, INC. ALL RIGHTS RESERVED. PROPRIETARY AND CONFIDENTIAL INFORMATION - THIS DOCUMENT IS THE PROPERTY OF REGAL BELOIT AMERICA, INC. (OWNER) AND CONTAINS OWNER'S PROPRIETARY INFORMATION. ANY PERSON, CORPORATION OR OTHER FIRM RECEIVING IT IS DEEMED, BY RECEIVING IT, TO AGREE THAT IT, AND/OR ANY PART OF IT, SHALL NOT BE DISCLOSED TO ANY PERSON, CORPORATION OR OTHER ENTITY, DUPLICATED, AND/OR USED, EXCEPT AS EXPRESSLY APPROVED IN WRITING IN ADVANCE BY OWNER. THIS DOCUMENT SHALL BE RETURNED TO OWNER UPON REQUEST. IT MAY BE SUBJECT TO CERTAIN RESTRICTIONS UNDER APPLICABLE EXPORT CONTROL LAWS AND REGULATIONS.			REMOVE BURRS & BREAK SHARP EDGES .003/.015 [0.076/.381]	DATE:	MATERIAL
			CORNER FILLETS .02 [.51]	08-16-2010	
			MACHINED SURFACES 125/ mm 3.2/ INCH mm 3.2/	REFERENCE	PROCESS/FINISH
			mm SHOWN IN [BRACKETS]	THIRD ANGLE PROJECTION	SIZE DWG NO
					C BN36
					SHEET 1

# AO Smith

Performance Down Project: 0340001 (High Speed)

Wednesday, January 15, 2003 06:37 PM



TRACKING #: 10009902  
 SBU: Pump  
 ENGINEER: D FOX  
 TECHNICIAN: DENNIS  
 BENCH: 2  
 TORQUE CELL: 350 lb-in  
 NP RPM: 3450  
 # SPEEDS: 2  
 MOTOR #: 1  
 TYPE: SPM

**HI SPEED**

CUSTOMER: L  
 MODEL: 0340001A  
 FRAME: R48Y  
 PHASES: 1  
 HP: 0.75  
 VOLTS: 115.0  
 HERTZ: 60  
 START CAP: 0.00  
 RUN CAP: 0.00  
 COMMENT3:

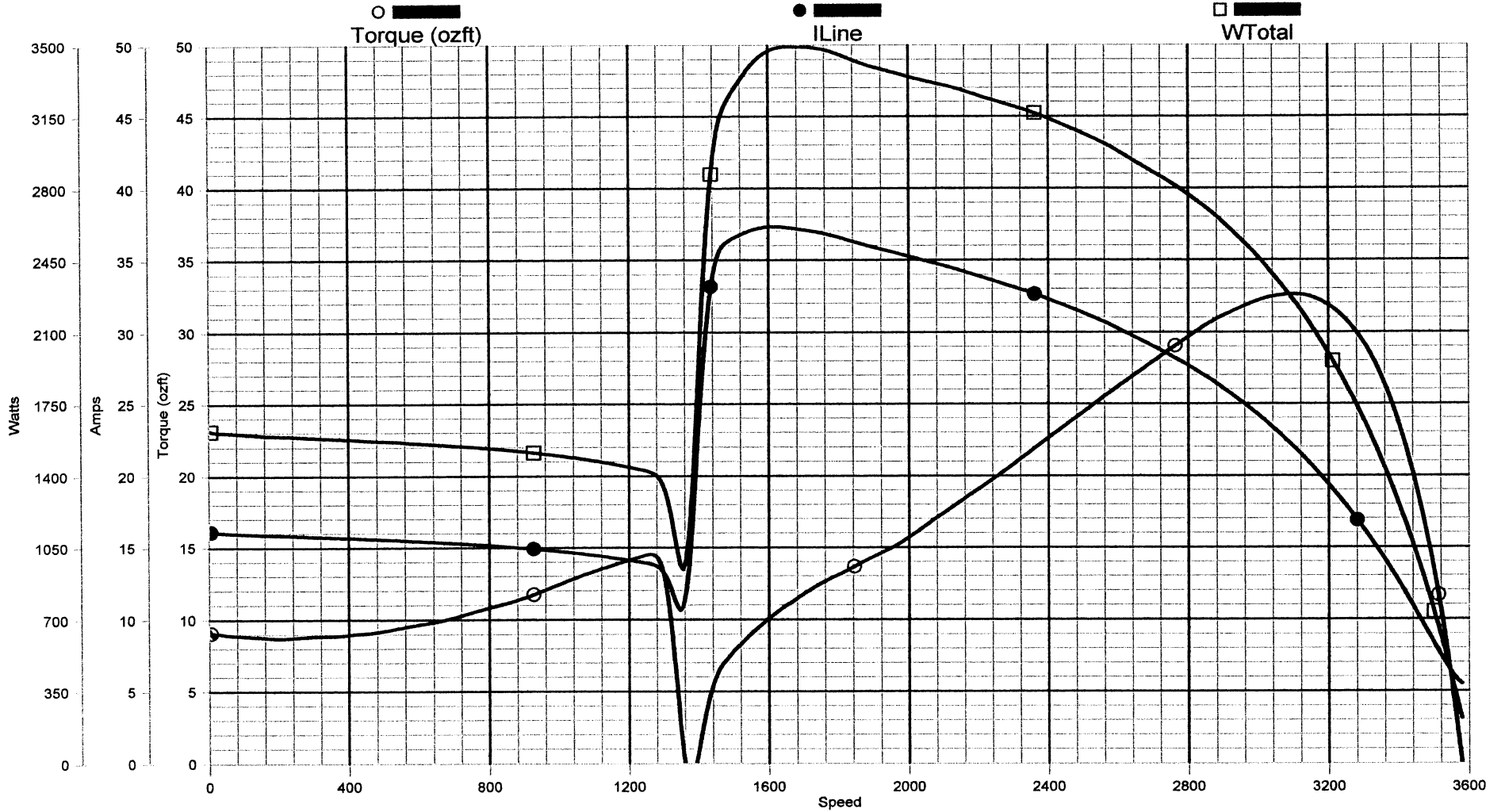
LOCK AMPS: 23.0A  
 LOCK TORQUE: 9.0 oz-ft  
 BREAKDOWN TORQUE: 35.2 oz-ft

DESCRIPTION: OFFSET  
 BDT: 35.18  
 MT: 35.18  
 SF: 0.00  
 LRT: 0.00  
 LRA: 0.00  
 PUT: 0.00  
 COMMENT1:  
 COMMENT2:  
 COMMENT4:

# AO Smith

Performance Up Project: 0340001 (High Speed)

Wednesday, January 15, 2003 07:15 PM



TRACKING #: 10009902  
 SBU: Pump  
 ENGINEER: D FOX  
 TECHNICIAN: DENNIS  
 BENCH: 2  
 TORQUE CELL: 350 lb-in  
 NP RPM: 3450  
 # SPEEDS: 2  
 MOTOR #: 1  
 TYPE: SPM

*HI SPEED*

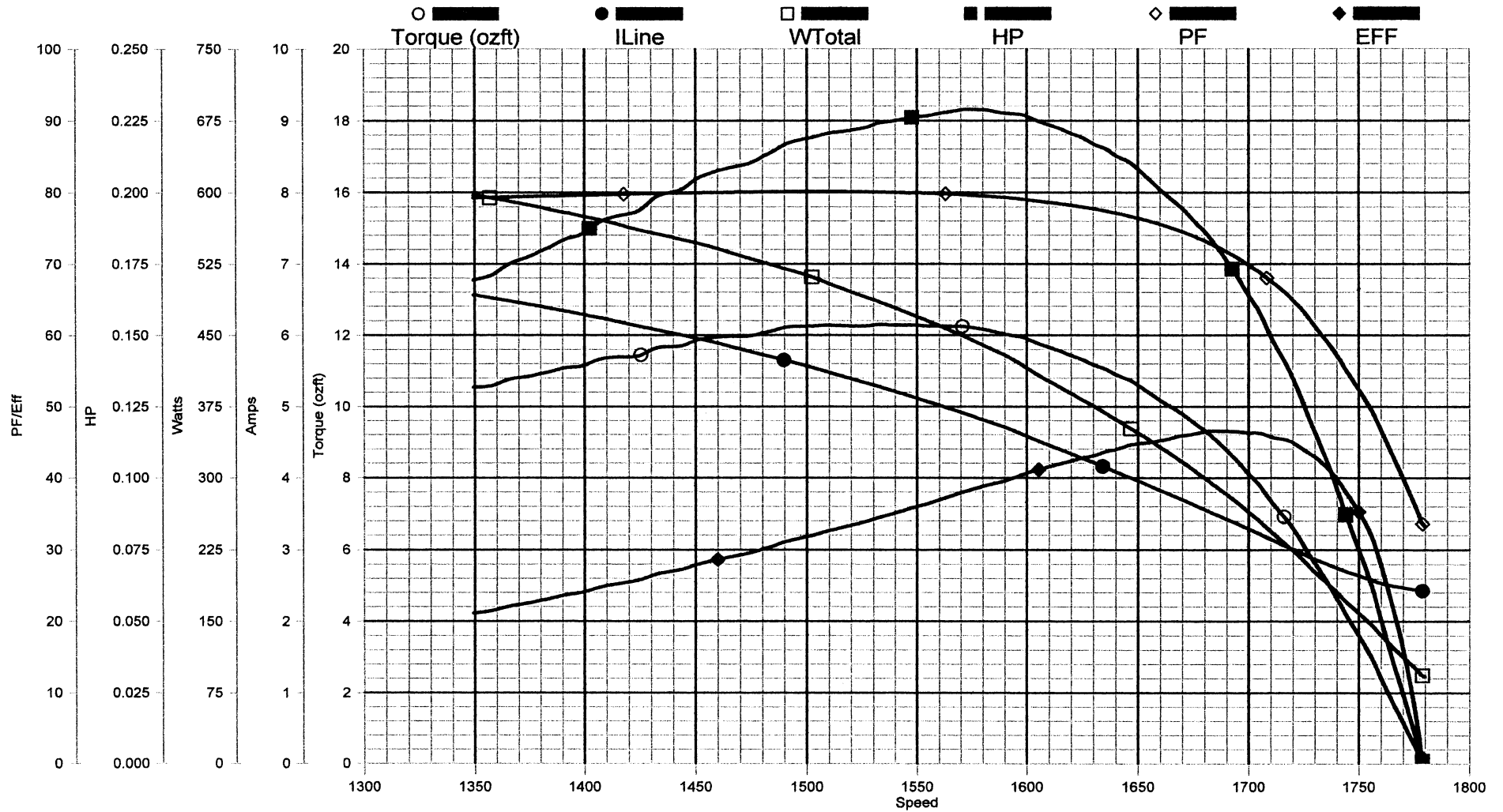
CUSTOMER:  
 MODEL: 0340001A  
 FRAME: R48Y  
 PHASES: 1  
 HP: 0.75  
 VOLTS: 115.0  
 HERTZ: 60  
 START CAP: 0.00  
 RUN CAP: 0.00  
 COMMENT3:

DESCRIPTION: 0-SYNC  
 BDT: 32.61  
 MT: 32.61  
 SF: 0.00  
 LRT: 9.29  
 LRA: 16.09  
 PUT: -1.22  
 COMMENT1:  
 COMMENT2:  
 COMMENT4:

# AO Smith

Performance Down    Project: 0340001 (Low Speed)

Wednesday, January 15, 2003 08:10 PM



TRACKING #: 10009902  
 SBU: Pump  
 ENGINEER: D FOX  
 TECHNICIAN: DENNIS  
 BENCH: 2  
 TORQUE CELL: 350 lb-in  
 NP RPM: 1725  
 # SPEEDS: 2  
 MOTOR #: 1  
 TYPE: SPM

**LOW SPEED**

CUSTOMER:  
 MODEL: 0340001A  
 FRAME: R48Y  
 PHASES: 1  
 HP: 0.10  
 VOLTS: 115.0  
 HERTZ: 60  
 START CAP: 0.00  
 RUN CAP: 0.00  
 COMMENT3:

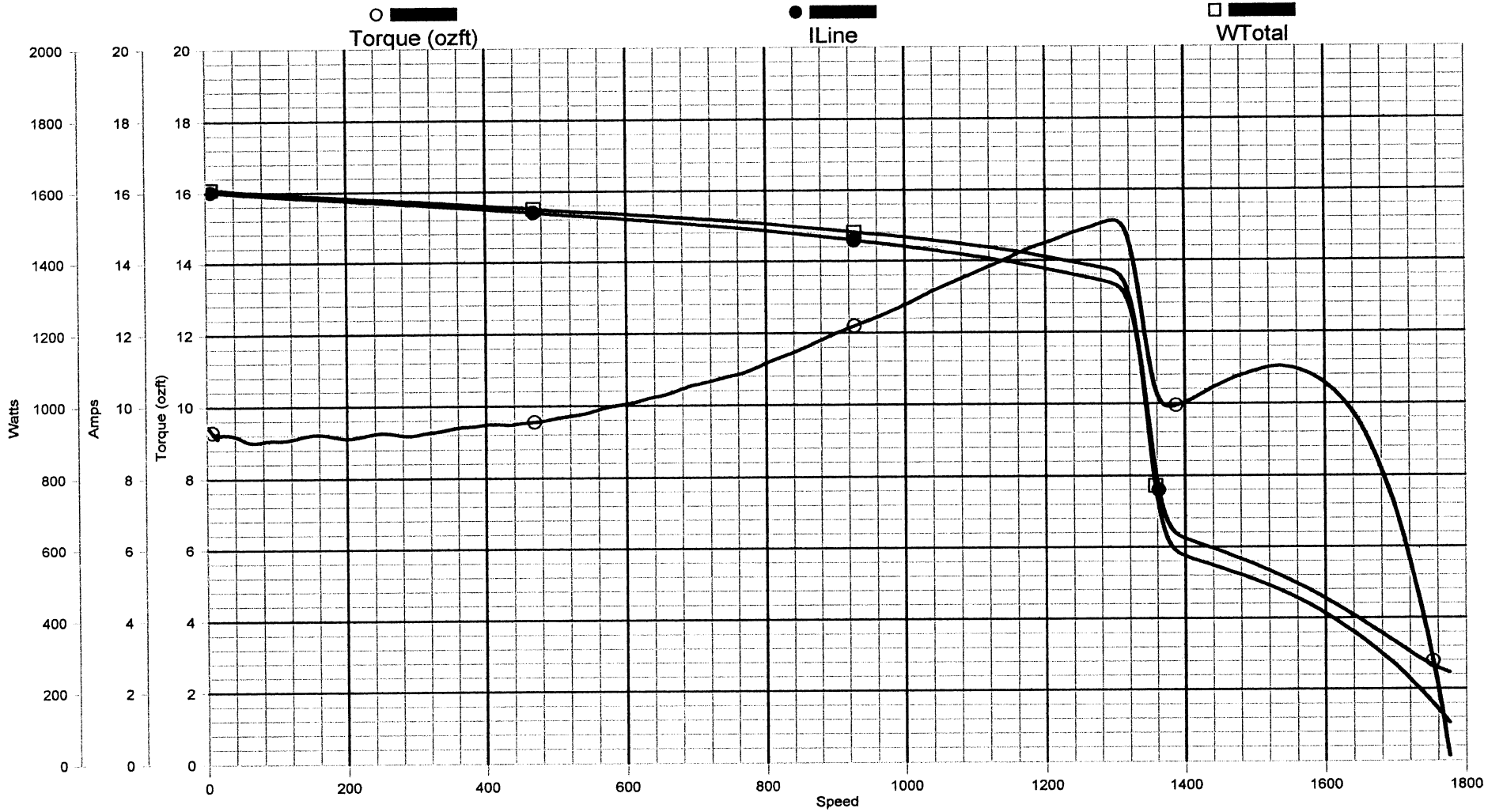
*LOCK AMPS: 16.0A*  
*LOCK TORQUE: 11.0 oz-ft*  
*BREAKDOWN TORQUE: 12.3 oz-ft*

DESCRIPTION: OFFSET  
 BDT: 12.28  
 MT: 12.29  
 SF: 0.00  
 LRT: 0.00  
 LRA: 0.00  
 PUT: 0.00  
 COMMENT1:  
 COMMENT2:  
 COMMENT4:

# AO Smith

Performance Up    Project: 0340001 (Low Speed)

Wednesday, January 15, 2003 08:39 PM



TRACKING #: 10009902  
 SBU: Pump  
 ENGINEER: D FOX  
 TECHNICIAN: DENNIS  
 BENCH: 2  
 TORQUE CELL: 350 lb-in  
 NP RPM: 1725  
 # SPEEDS: 2  
 MOTOR #: 1  
 TYPE: SPM

LOW SPEED

CUSTOMER:  
 MODEL: 0340001A  
 FRAME: R48Y  
 PHASES: 1  
 HP: 0.10  
 VOLTS: 115.0  
 HERTZ: 60  
 START CAP: 0.00  
 RUN CAP: 0.00  
 COMMENT3:

DESCRIPTION: 0-SYNC  
 BDT: 11.03  
 MT: 15.12  
 SF: 0.00  
 LRT: 9.45  
 LRA: 16.01  
 PUT: 9.00  
 COMMENT1:  
 COMMENT2:  
 COMMENT4: