

PRODUCT INFORMATION PACKET



Model No: BN62
Catalog No: BN62
Pool Pump Motor, 3-.38 HP, 1 Ph, 60 Hz, 230 V, 3600 RPM, Y48Y Frame, DP



Regal and Century are trademarks of Regal Rexnord Corporation or one of its affiliated companies.
©2022 Regal Rexnord Corporation, All Rights Reserved. MC017097E





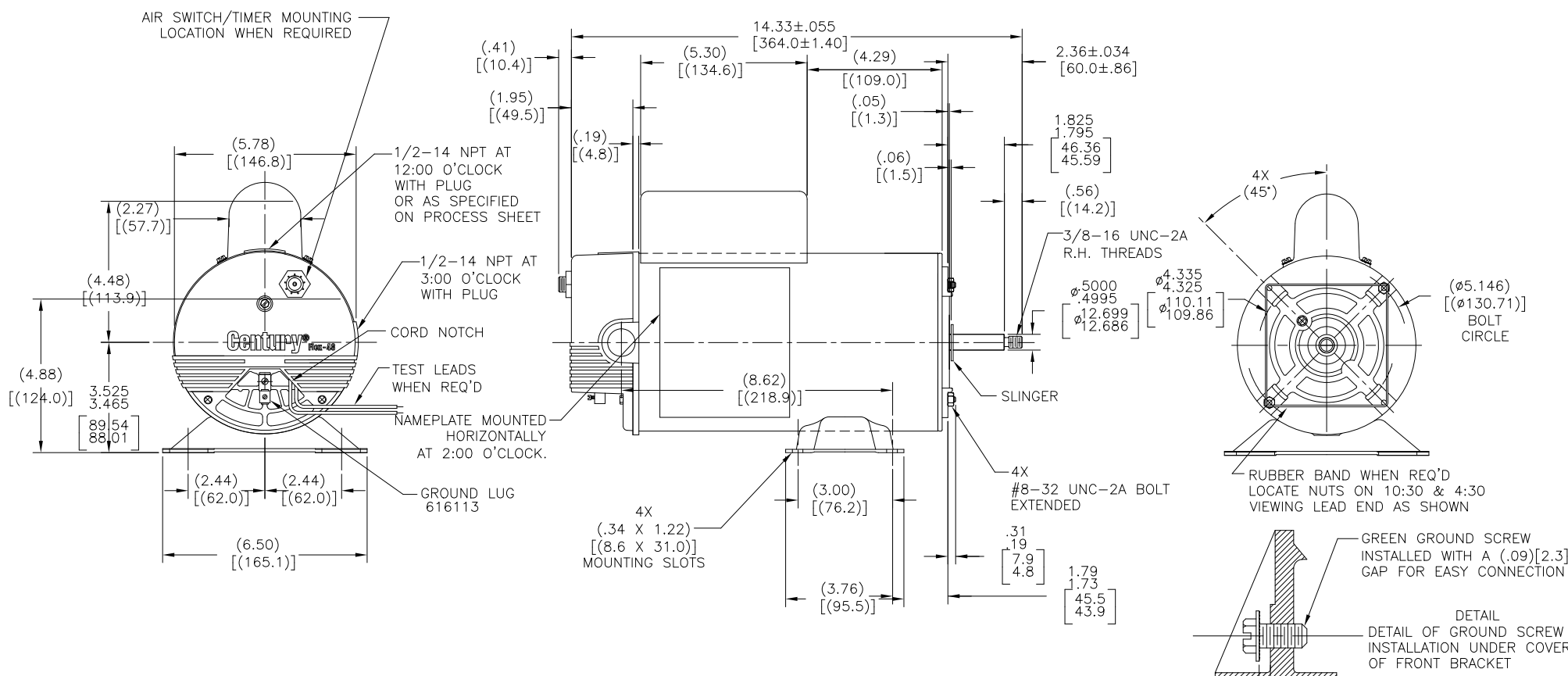
Nameplate Specifications

Output HP	3-.38 Hp	Output KW	2.2 kW
Frequency	60 Hz	Voltage	230 V
Current	12.0/3.5 A	Speed	3450/1725 rpm
Service Factor	1	Phase	1
Duty	Continuous	Insulation Class	F
Frame	Y48Y	Enclosure	Drip Proof
Thermal Protection	Thermally Protected	Ambient Temperature	50 °C
UL	Recognized	CSA	Y
Number of Speeds	2-2-VT		

Technical Specifications

Electrical Type	Permanent Split Capacitor, High Speed; Capacitor Start, Low Speed	Starting Method	Across The Line
Poles	2/4	Rotation	Counterclockwise Pump End
Mounting	Thru Bolt	Motor Orientation	Horizontal
Drive End Bearing	Ball	Opp Drive End Bearing	Ball
Frame Material	Rolled Steel	Shaft Type	3/8 Threaded
Overall Length	14.33 in	Frame Length	9.50 in
Shaft Diameter	0.500 in	Shaft Extension	2.36 in
Outline Drawing	BN62-S01	Connection Drawing	17888703.PCX

This is an uncontrolled document once printed or downloaded and is subject to change without notice. Date Created:11/28/2022



NAMEPLATE DATA	EXTERNAL CONNECTION DIAGRAM	NOTES
MODEL: 184821 CUST PN: BN62 HP: --- SF: --- ROT: CCWPE RPM: 3450/1725 TYPE: CXSM CODE: A FORM: FRAME: Y 48Y VOLTS: 230 AMPS: 12.0/3.5 MAX AMPS: --- SF AMPS: --- PH: 1 HZ: 60 INS: F AMB: 50 DUTY: CONT ENCLOSURE: DP THERMALLY PROTECTED		1. THE BOTTOM TWO THRU BOLTS IN SHAFT END BRACKET ARE TO BE PARALLEL TO BASE WITHIN (.060)[(1.52)]. 2. LEAD END FRAME TO BE ORIENTED TO DRIVE END FRAME TO WITHIN ±2°. 3. CTQ REQUIREMENT SEE EP000105-008 4. RoHS & REACH REQUIREMENT SEE EP000014.

PERFORMANCE CURVE	APPROVED SAMPLE		
18071711			
UL COMPONENT	CSA		
FILE#	CCN#	FILE#	GUIDE#
E44549	PRGY2	LR4642	4211-01
CUSTOMER	DISTRIBUTION		

CRITICAL TO QUALITY CHARACTERISTICS (CTQs) (P) PROCESS (E) ENGINEERING (A) APPLICATION (R) REGULATORY (L) LIFE	DRAWING REVISION	REVISION BY	DATE	TOLERANCES UNLESS OTHERWISE SPECIFIED DEC. INCH mm ANGLE .X ±0.1 [±3] ±0.5° .XX ±0.02 [±0.5] .XXX ±0.005 [±0.13] .XXXX ±0.0005 [±0.013] REMOVE BURRS & BREAK SHARP EDGES .003/.015 [.08/.38] CORNER FILLETS .02 [5] MACHINED SURFACES .125 INCH / .32 mm MACHINED SURFACES .125 INCH / .32 mm	DRAWN BY:	Regal Beloit America, Inc.
	ECO	HAIXIA ZHANG	04-11-2022		JH	
	ECO DESCRIPTION	TRISTIA ZHAO	04-11-2022		DATE:	
	SEE ECR				07-16-2009	
COPYRIGHT REGAL BELOIT AMERICA, INC. ALL RIGHTS RESERVED. PROPRIETARY AND CONFIDENTIAL INFORMATION - THIS DOCUMENT IS THE PROPERTY OF REGAL BELOIT AMERICA, INC. (OWNER) AND CONTAINS OWNER'S PROPRIETARY INFORMATION. ANY PERSON, CORPORATION OR OTHER ENTITY, DUPLICATED, AND/OR USED, EXCEPT AS EXPRESSLY APPROVED IN WRITING IN ADVANCE BY OWNER, THIS DOCUMENT SHALL BE RETURNED TO OWNER UPON REQUEST. IT MAY BE SUBJECT TO CERTAIN RESTRICTIONS UNDER APPLICABLE EXPORT CONTROL LAWS AND REGULATIONS.				APPROVED BY:	DESCRIPTION	
				SH	OUTLINE	
				DATE:	MATERIAL	PROCESS/FINISH
				07-16-2009		
				REFERENCE	SIZE	DWG NO
				THIRD ANGLE PROJECTION	C	BN62
						SHEET
						1