

PRODUCT INFORMATION PACKET



Model No: C081

Catalog No: C081

Condenser Fan Motor, 1.0 HP, 1 Ph, 60 Hz, 575 V, 1200 RPM, N56Y Frame, OPEN



Regal and Century are trademarks of Regal Rexnord Corporation or one of its affiliated companies.

©2023 Regal Rexnord Corporation, All Rights Reserved. MC017097E





Nameplate Specifications

Output HP	1.0 Hp	Output KW	0.75 kW
Frequency	60 Hz	Voltage	575 V
Current	2.2 A	Speed	1075 rpm
Service Factor	1	Phase	1
Duty	Continuous	Insulation Class	B
Frame	N56Y	Enclosure	Open Enclosed
Thermal Protection	Thermally Protected	Ambient Temperature	60 °C
UL	Recognized	CSA	Y
CE	N	Number of Speeds	1

Technical Specifications

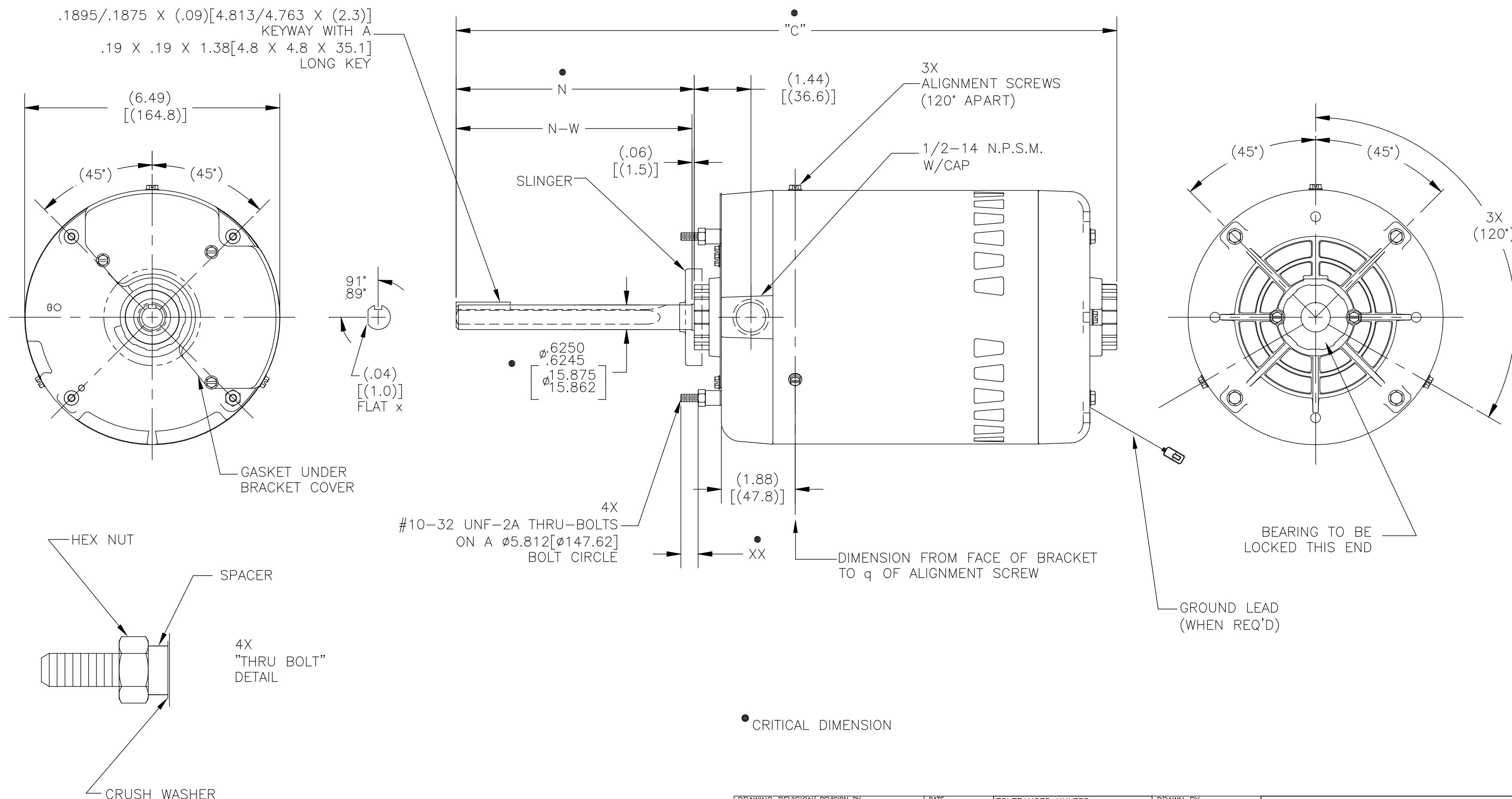
Electrical Type	Permanent Split Capacitor, Single Or Dual Voltage	Starting Method	Across The Line
Poles	6	Rotation	Reversible Counterclockwise
Mounting	Round Belly Band	Drive End Bearing	Ball
Opp Drive End Bearing	Ball	Frame Material	Rolled Steel
Shaft Type	Keyed	Overall Length	17.31 in
Frame Length	7.25 in	Shaft Diameter	0.625 in
Shaft Extension	6.06 in		
Outline Drawing	C081-S01	Connection Drawing	17564820.PCX

This is an uncontrolled document once printed or downloaded and is subject to change without notice. Date Created:02/16/2023

FRAME	TYPE	"C"	XX	N	(N-W)	USABLE LENGTH OF KEYWAY & FLAT
N56Y	CX	17.31 [439.7]	1.00/1.25 [25.4/31.8]	6.06 [153.9]	6.00 [152.4]	4.80 [121.9]

ALL DIMENSIONS SHOWN IN PARENTHESIS ARE REFERENCE DIMENSIONS, ALL OTHER DIMENSIONS ARE TOLERANCED PER THE FOLLOWING SHART UNLESS OTHERWISE SPECIFIED.

"C" DIM. = ± .055[1.40]
 SHAFT EXT. = ± .034[.86]
 LEAD LENGTHS = ± 1.00[25.4]
 THRU-BOLTS = ± .050[1.27]



DRAWING REVISION B		REVISION BY A.BAUGHMAN	DATE 11-09-2016	TOLERANCES UNLESS OTHERWISE SPECIFIED		DRAWN BY: G.ALVIDREZ		Regal Beloit America, Inc.		
ECO-0111883		APPROVED BY A.BAUGHMAN	DATE 11-09-2016	DEC.	INCH	mm	ANGLE		DATE: 09-28-2013	
ECO DESCRIPTION UPDATED TO NEW REGAL TITLEBLOCK				.X	±0.1	[±2.5]	±0.5°	APPROVED BY:		
COPYRIGHT REGAL BELOIT AMERICA, INC. ALL RIGHTS RESERVED. PROPRIETARY AND CONFIDENTIAL INFORMATION - THIS DOCUMENT IS THE PROPERTY OF REGAL BELOIT AMERICA, INC. (OWNER) AND CONTAINS OWNER'S PROPRIETARY INFORMATION. ANY PERSON, CORPORATION OR OTHER FIRM RECEIVING IT IS DEEMED, BY RECEIVING IT, TO AGREE THAT IT, AND/OR ANY PART OF IT, SHALL NOT BE DISCLOSED TO ANY PERSON, CORPORATION OR OTHER ENTITY, DUPLICATED, AND/OR USED, EXCEPT AS EXPRESSLY APPROVED IN WRITING IN ADVANCE BY OWNER. THIS DOCUMENT SHALL BE RETURNED TO OWNER UPON REQUEST. IT MAY BE SUBJECT TO CERTAIN RESTRICTIONS UNDER APPLICABLE EXPORT CONTROL LAWS AND REGULATIONS.				.XX	±0.02	[±0.51]		DATE:		
				.XXX	±0.005	[±0.127]		REFERENCE	MATERIAL	PROCESS/FINISH
				.XXXX	±0.0005	[±0.0127]		THIRD ANGLE PROJECTION	SIZE	DWG NO
				REMOVE BURRS & BREAK SHARP EDGES .003/.015 [0.076/.381] X 45° CORNER FILLETS R.02 [5.1] MACHINED SURFACES 125/3.2/INCH/mm	DESCRIPTION MODEL-CFHP-56FR OUTLINE		C081			
				MATERIAL		PROCESS/FINISH		1		