

PRODUCT INFORMATION PACKET



Model No: C244

Catalog No: C244

Circulator Pump Motor, 3/4 HP, 1 Ph, 60 Hz, 115/230 V, 1800 RPM, F56Y Frame, DP



Regal and Century are trademarks of Regal Rexnord Corporation or one of its affiliated companies.
©2022 Regal Rexnord Corporation, All Rights Reserved. MC017097E





Nameplate Specifications

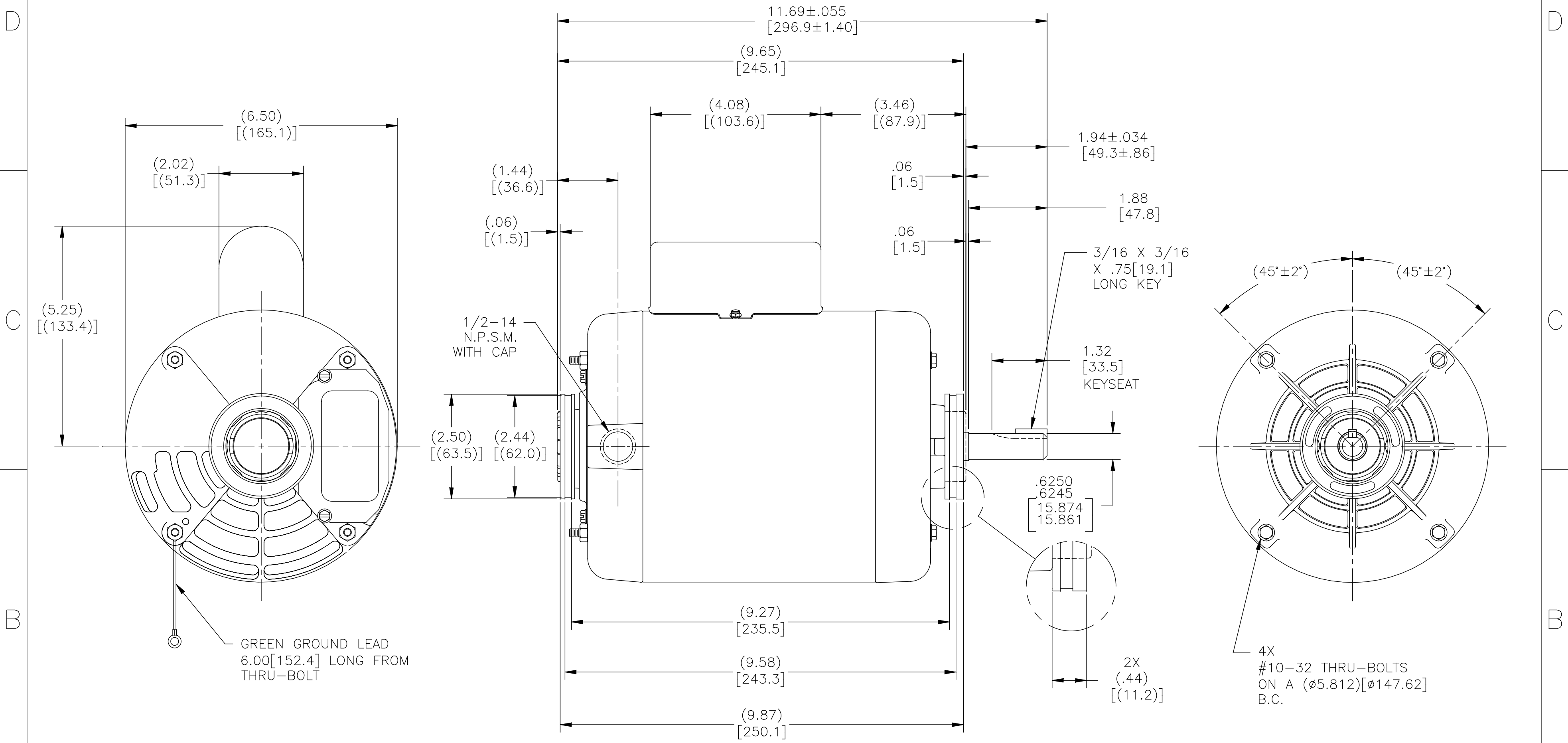
Output HP	3/4 Hp	Output KW	0.56 kW
Frequency	60 Hz	Voltage	115/230 V
Current	10.4/5.2 A	Speed	1725 rpm
Service Factor	1.3	Phase	1
Duty	Continuous	Insulation Class	B
Frame	F56Y	Enclosure	Drip Proof
Thermal Protection	Thermally Protected	Ambient Temperature	40 °C
UL	Recognized	CSA	Y
CE	N	Number of Speeds	1

Technical Specifications

Electrical Type	Capacitor Start, Induction Run, Single Or Dual Voltage	Starting Method	Across The Line
Poles	4	Rotation	Reversible Clockwise
Mounting	Cushion Ring	Drive End Bearing	Sleeve
Opp Drive End Bearing	Sleeve	Frame Material	Rolled Steel
Shaft Type	Keyed	Overall Length	11.69 in
Frame Length	5.75 in	Shaft Diameter	0.625 in
Shaft Extension	1.94 in		
Connection Drawing	17050317.PCX	Outline Drawing	C244-S01

This is an uncontrolled document once printed or downloaded and is subject to change without notice. Date Created:11/28/2022

	4	3	2	1
TYPE	FRAME	FORM	ALL DIMENSIONS SHOWN IN PARENTHESIS ARE REFERENCE DIMENSIONS. ALL OTHER DIMENSIONS ARE TOLERANCED PER CHART UNLESS OTHERWISE SPECIFIED	
CS	F56Y	K		



DRAWING REVISION C	REVISION BY F.NAVARRO	DATE 02-11-2016	TOLERANCES UNLESS OTHERWISE SPECIFIED	DRAWN BY: A. DE LUNA	Regal Beloit America, Inc.
ECO 0096589	APPROVED BY F.NAVARRO	DATE 02-11-2016	DEC. INCH mm ANGLE .X ±0.1 [±2.5] ±0.5° .XX ±0.02 [±0.51] .XXX ±0.005 [±0.127] .XXXX ±0.0005 [±0.0127]	DATE: 03-09-2011	
ECO DESCRIPTION SEE ECO	COPYRIGHT REGAL BELOIT AMERICA, INC. ALL RIGHTS RESERVED. PROPRIETARY AND CONFIDENTIAL INFORMATION - THIS DOCUMENT IS THE PROPERTY OF REGAL BELOIT AMERICA, INC. (OWNER) AND CONTAINS OWNER'S PROPRIETARY INFORMATION. ANY PERSON, CORPORATION OR OTHER FIRM RECEIVING IT IS DEEMED, BY RECEIVING IT, TO AGREE THAT IT, AND/OR ANY PART OF IT, SHALL NOT BE DISCLOSED TO ANY PERSON, CORPORATION OR OTHER ENTITY, DUPLICATED, AND/OR USED, EXCEPT AS EXPRESSLY APPROVED IN WRITING IN ADVANCE BY OWNER. THIS DOCUMENT SHALL BE RETURNED TO OWNER UPON REQUEST. IT MAY BE SUBJECT TO CERTAIN RESTRICTIONS UNDER APPLICABLE EXPORT CONTROL LAWS AND REGULATIONS.		REMOVE BURRS & BREAK SHARP EDGES .003/.015 [0.076/.381] CORNER FILLETS .02 [51] MACHINED SURFACES $\frac{125}{\text{INCH}} \sqrt{\frac{3.2}{\text{mm}}}$	APPROVED BY: S. JIMNEZ	DESCRIPTION MODEL-CFHP-56FR OUTLINE
			THIRD ANGLE PROJECTION	DATE: 03-09-2011	MATERIAL
			SIZE DWG NO C C244	REFERENCE	PROCESS/FINISH
					SHEET 1