

# PRODUCT INFORMATION PACKET



Model No: C246

Catalog No: C246

Circulator Pump Motor, 1.0 HP, 1 Ph, 60 Hz, 230/115 V, 1800 RPM, Y56Y Frame, DP



Regal and Century are trademarks of Regal Rexnord Corporation or one of its affiliated companies.

©2022 Regal Rexnord Corporation, All Rights Reserved. MC017097E





**Nameplate Specifications**

Output HP	1.0 Hp	Output KW	0.75 kW
Frequency	60 Hz	Voltage	230/115 V
Current	6.5/13.0 A	Speed	1725 rpm
Service Factor	1.25	Phase	1
Duty	Continuous	Insulation Class	B
Frame	Y56Y	Enclosure	Drip Proof
Thermal Protection	Thermally Protected	Ambient Temperature	40 °C
UL	Recognized	CSA	Y
CE	N	Number of Speeds	1

**Technical Specifications**

Electrical Type	Capacitor Start, Induction Run, Low Starting Torque, Single Or Dual Voltage	Starting Method	Across The Line
Poles	4	Rotation	Reversible Clockwise
Mounting	Cushion Ring	Drive End Bearing	Sleeve
Opp Drive End Bearing	Sleeve	Frame Material	Rolled Steel
Shaft Type	Keyed	Overall Length	11.00 in
Frame Length	5.82 in	Shaft Diameter	0.625 in
Shaft Extension	1.18 in		
Outline Drawing	175049-S01	Connection Drawing	17050317.PCX

This is an uncontrolled document once printed or downloaded and is subject to change without notice. Date Created:11/28/2022

4

3

2

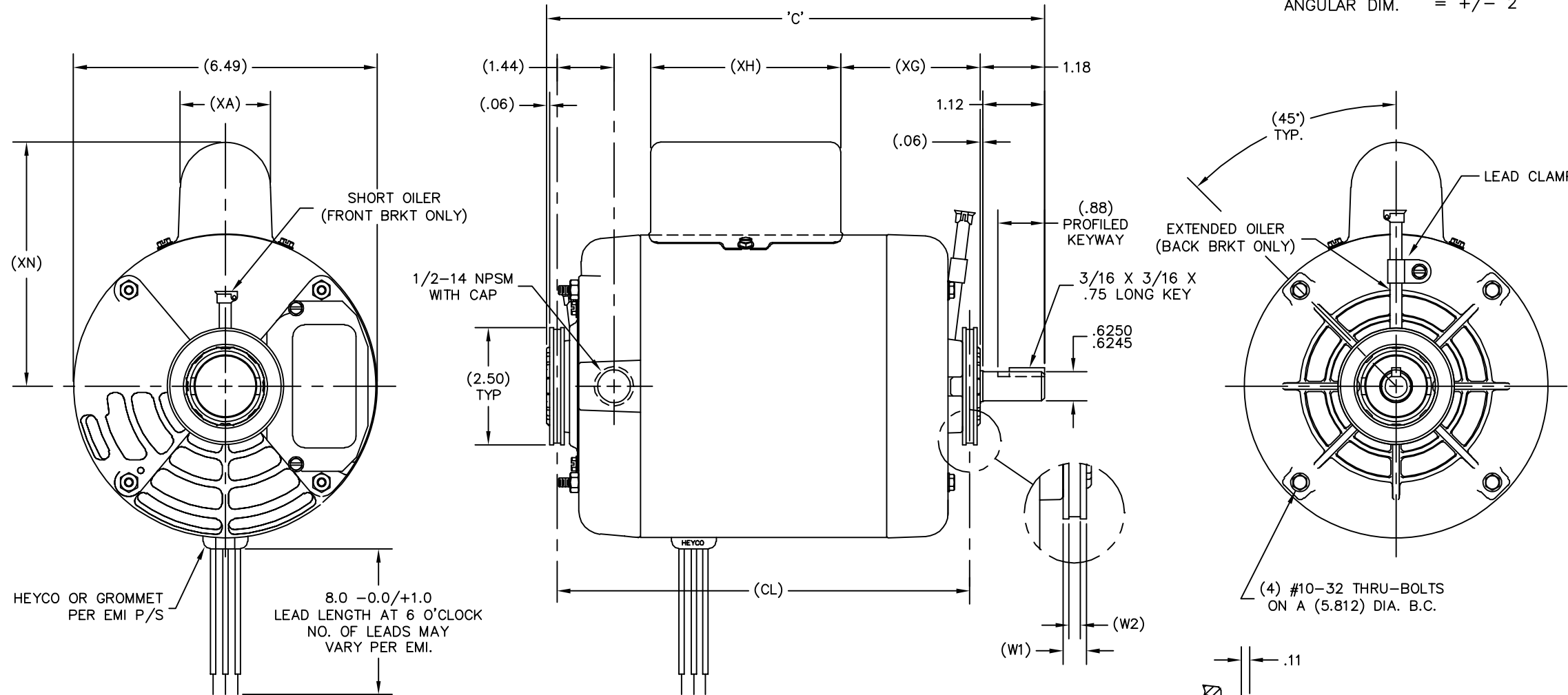
1

REV	ECO	REV BY	DATE	APPD	DATE
E	0025370	J.ZHU	04-18-2012	B.SHEN	04-18-2012

GROUP	TYPE	FRAME	"C"	(CL)	(W1)	(W2)	(XA)	(XG)	(XH)	(XN)	REMARKS
-01	CS	Y56Y	11.00	9.38	.310	.156	2.01	3.55	4.06	5.20	
-02	SC	Y56Y	10.94	9.38	.44	.16	-----	-----	-----	-----	CUSHION RINGS EXTEND .06 PAST BRACKET HUB
-03	SC	Y56Y	10.49	8.87	.44	.16	-----	-----	-----	-----	CUSHION RINGS EXTEND .06 PAST BRACKET HUB

ALL DIMENSIONS SHOWN IN PARENTHESIS ARE REFERENCE DIMENSIONS. ALL OTHER DIMENSIONS ARE TOLERANCED PER THE FOLLOWING CHART UNLESS OTHERWISE SPECIFIED.

"C" DIM. = +/- .055  
 SHAFT EXT. = +/- .034  
 EXTENDED THRU-BOLTS = +/- .050  
 ANGULAR DIM. = +/- 2'



HEYCO OR GROMMET PER EMI P/S  
 8.0 -0.0/+1.0  
 LEAD LENGTH AT 6 O'CLOCK  
 NO. OF LEADS MAY VARY PER EMI.

GEOMETRIC CHARACTERISTICS & SYMBOLS

- ▭ FLATNESS
- STRAIGHTNESS
- ∠ ANGULARITY
- ⊥ PERPENDICULARITY (SQUARENESS)
- // PARALLELISM
- ROUNDNESS (CIRCULARITY)
- ⊘ CYLINDRICITY
- △ PROFILE OF ANY SURFACE
- ∩ PROFILE OF ANY LINE
- ↗ RUNOUT
- ⊕ TRUE POSITION
- ◎ CONCENTRICITY
- ≡ SYMMETRY

ASME Y14.5M 1994

UNLESS OTHERWISE SPECIFIED DIM. TOLERANCES ARE AS FOLLOWS:

INCH X XX XXX XXXX  
 ±.1 ±.02 ±.005 ±.0005  
 mm ±0.5 ±0.13 ±0.013

ANG. ±.50 DEG  
 REMOVE BURRS & BREAK SHARP EDGES:  
 INCH .003-.015 mm 0.1-0.4

CORNER FILLETS TO:  
 INCH .020 mm 0.5

MACHINE SURFACES:  
 INCH 125 mm 3.2

METRIC DIMS. SHOWN IN [BRACKETS]

DR BY: JAH 11-18-1987

APPD:

THIRD ANGLE PROJECTION

EDS DATE 11-11-2011  
 FORMAT REV G

CONFIDENTIAL: THIS DRAWING AND ITS INFORMATION ARE THE EXCLUSIVE AND CONFIDENTIAL PROPERTY OF REGAL-BELOIT CORPORATION AND ARE NOT TO BE DISCLOSED, DUPLICATED, DISTRIBUTED OR OTHERWISE USED WITHOUT THE WRITTEN CONSENT OF REGAL-BELOIT CORPORATION. -ALL RIGHTS RESERVED.

**REGAL-BELOIT CORPORATION**

DESCRIPTION: **OUTLINE**

SIZE: C DWG NO: 175049

SCALE: NONE SHEET: 1

4

3

2

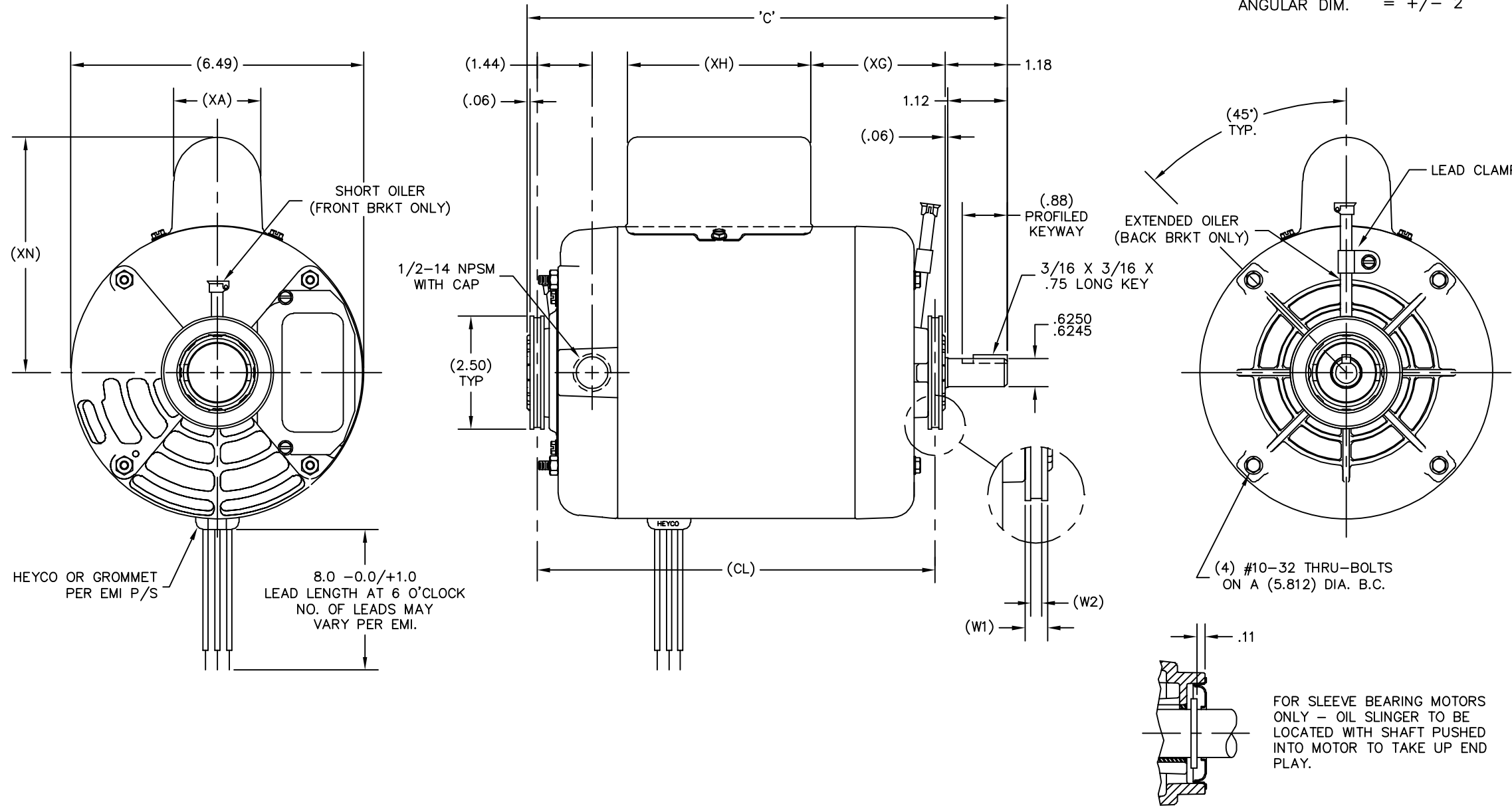
1

REVISION:	ECO	REVISADO POR:	FECHA:	APROBADO POR:	FECHA:
E	0025370	J.ZHU	04-18-2012	B.SHEN	04-18-2012

GROUP	TYPE	FRAME	"C"	(CL)	(W1)	(W2)	(XA)	(XG)	(XH)	(XN)	REMARKS
-01	CS	Y56Y	11.00	9.38	.310	.156	2.01	3.55	4.06	5.20	
-02	SC	Y56Y	10.94	9.38	.44	.16	-----	-----	-----	-----	CUSHION RINGS EXTEND .06 PAST BRACKET HUB
-03	SC	Y56Y	10.49	8.87	.44	.16	-----	-----	-----	-----	CUSHION RINGS EXTEND .06 PAST BRACKET HUB

ALL DIMENSIONS SHOWN IN PARENTHESIS ARE REFERENCE DIMENSIONS. ALL OTHER DIMENSIONS ARE TOLERANCED PER THE FOLLOWING CHART UNLESS OTHERWISE SPECIFIED.

"C" DIM. = +/- .055  
 SHAFT EXT. = +/- .034  
 EXTENDED THRU-BOLTS = +/- .050  
 ANGULAR DIM. = +/- 2'



CARACTERISTICAS DE GEOMETRIA Y SIMBOLOS

- PLANICIDAD
- RECTITUD
- ∠ ANGULARIDAD
- ⊥ PERPENDICULARIDAD (A ESCUADRA)
- // PARALELISMO
- REDONDEZ (CIRCULARIDAD)
- ∅ CILINDRICIDAD
- △ PERFIL DE CUALQUIER SUPERFICIE
- ∧ PERFIL DE CUALQUIER LINEA
- ∩ VARIACION
- ⊕ POSICION REAL
- ⊙ CONCENTRICIDAD
- = SIMETRIA

ASME Y14.5M 1994

A MENOS QUE SE ESPECIFIQUE DE OTRA MANERA, LAS TOLERANCIAS DE LAS DIMS; SON LAS SIGUIENTES:

PULG ±.1 ±.02 ±.005 ±.0005  
 mm ±0.5 ±0.13 ±0.013

ANG. ± 50 GRADOS

ELIMINAR REBABAS Y ORILLAS FILOSAS DEL BORDE.

PULG .003-.015 mm 0.1-0.4

FILETEAR ESQUINA: PULG .020 mm 0.5

MAQUINAR SUPERFICIES

PULG 125 mm 3.2

DIMS METRICAS MOSTRADAS [PARENTESIS]

DIBUJADO POR: JAH 11-18-1987

APROBADO POR:

TERCER ANGULO DE PROYECCION

FECHA EDS: 11-11-2011

REV. FORMATO: G

CONFIDENCIAL: ESTE DIBUJO Y SU INFORMACION SON PROPIEDAD DE USO EXCLUSIVO Y CONFIDENCIAL DE REGAL-BELOIT CORPORATION. Y NO DEBERAN SER REVELADOS, DUPLICADOS, DISTRIBUIDOS O USARSE DE OTRA MANERA SIN EL CONSENTIMIENTO ESCRITO DE REGAL-BELOIT CORPORATION. -TODOS LOS DERECHOS RESERVADOS.

REGAL-BELOIT CORPORATION

DESCRIPCION: OUTLINE

TAMAÑO: C NUMERO DE DIBUJO: 175049

ESCALA: NONE HOJA: 1

4

3

2

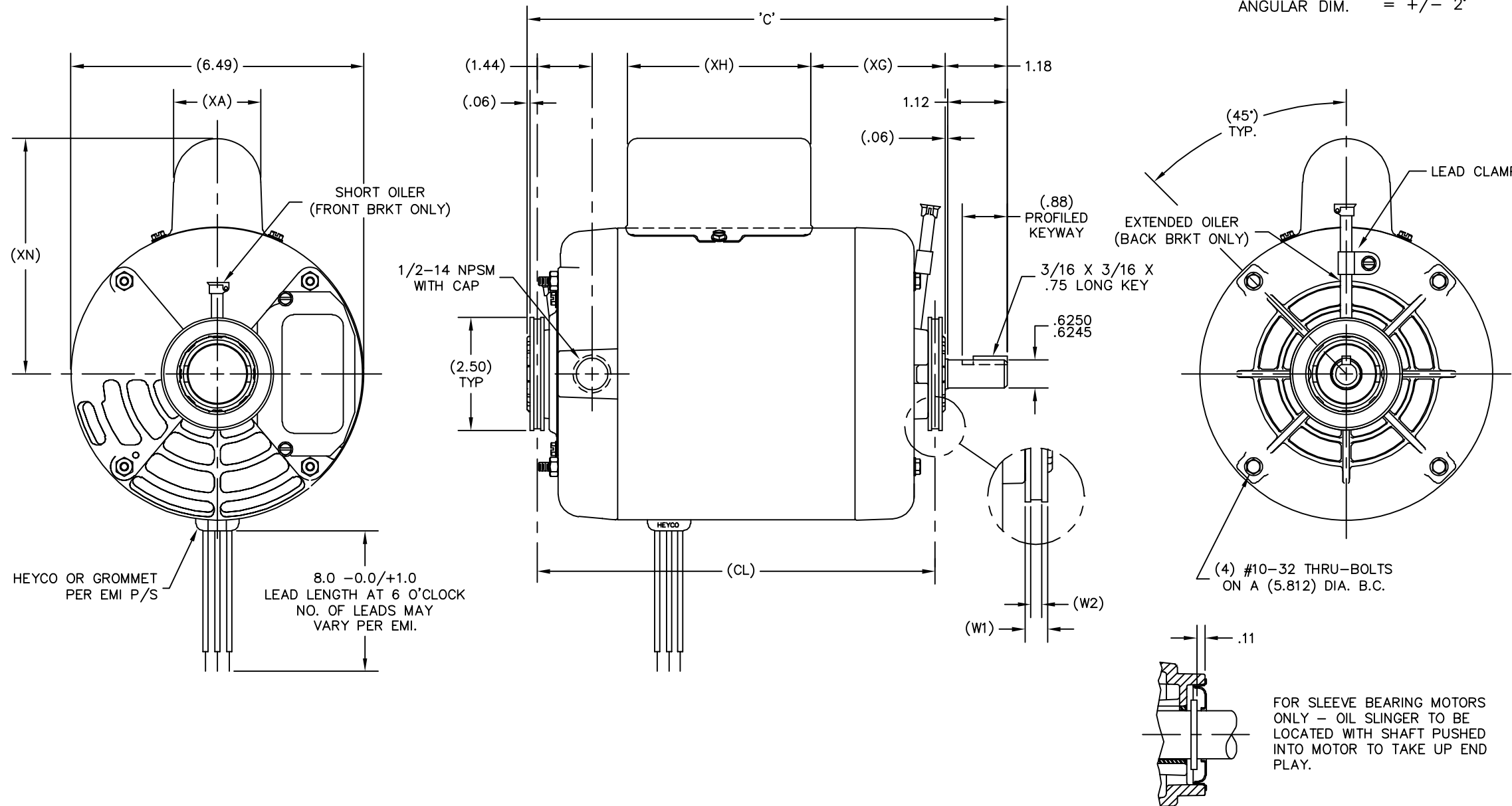
1

版本	ECO	编制	日期	批准	日期
E	0025370	J.ZHU	04-18-2012	B.SHEN	04-18-2012

GROUP	TYPE	FRAME	"C"	(CL)	(W1)	(W2)	(XA)	(XG)	(XH)	(XN)	REMARKS
-01	CS	Y56Y	11.00	9.38	.310	.156	2.01	3.55	4.06	5.20	
-02	SC	Y56Y	10.94	9.38	.44	.16	----	----	----	----	CUSHION RINGS EXTEND .06 PAST BRACKET HUB
-03	SC	Y56Y	10.49	8.87	.44	.16	----	----	----	----	CUSHION RINGS EXTEND .06 PAST BRACKET HUB

ALL DIMENSIONS SHOWN IN PARENTHESIS ARE REFERENCE DIMENSIONS. ALL OTHER DIMENSIONS ARE TOLERANCED PER THE FOLLOWING CHART UNLESS OTHERWISE SPECIFIED.

"C" DIM. = +/- .055  
 SHAFT EXT. = +/- .034  
 EXTENDED THRU-BOLTS = +/- .050  
 ANGULAR DIM. = +/- 2'



形位公差	除另有注明
□ 平面度	尺寸公差如下:
— 直线度	英寸 X XX XXX XXXX
∠ 倾斜度	英寸 ±.1 ±.02 ±.005 ±.0005
⊥ 垂直度	毫米 ±0.5 ±0.13 ±0.013
// 平行度	角度 ±.50 度
○ 圆度	清理毛刺和尖棱
⊘ 圆柱度	英寸 .003-.015 毫米 0.1-0.4
△ 面轮廓度	内圆角
∩ 线轮廓度	英寸 .020 毫米 0.5
∧ 圆跳动	表面粗糙度
⊕ 位置度	英制 125 米制 3.2
⊙ 同轴度	米制尺寸显示在 [ ]
≡ 对称度	

ASME Y14.5M 1994

绘图:	JAH	11-18-1987
批准:		
第三角投影	⊕	图纸格式发布日期 11-11-2011 图纸格式版本 G
机密: 本图纸及相关信息所有权归REGAL-BELOIT CORPORATION. 未经REGAL-BELOIT CORPORATION书面授权, 不得泄露、复制、传播或作其他用途。—版权所有		

名称		REGAL-BELOIT CORPORATION
图幅		C
图号		175049
比例	NONE	页号 1

名称		REGAL-BELOIT CORPORATION
图幅		C
图号		175049
比例	NONE	页号 1

4

3

2

1