

# PRODUCT INFORMATION PACKET



Model No: C345

Catalog No: C345

Auger Drive Motor, 1/3 HP, 3 Ph, 60 Hz, 208-230/460 V, 1800 RPM, J56N Frame, TENV



Regal and Century are trademarks of Regal Rexnord Corporation or one of its affiliated companies.

©2022 Regal Rexnord Corporation, All Rights Reserved. MC017097E





**Nameplate Specifications**

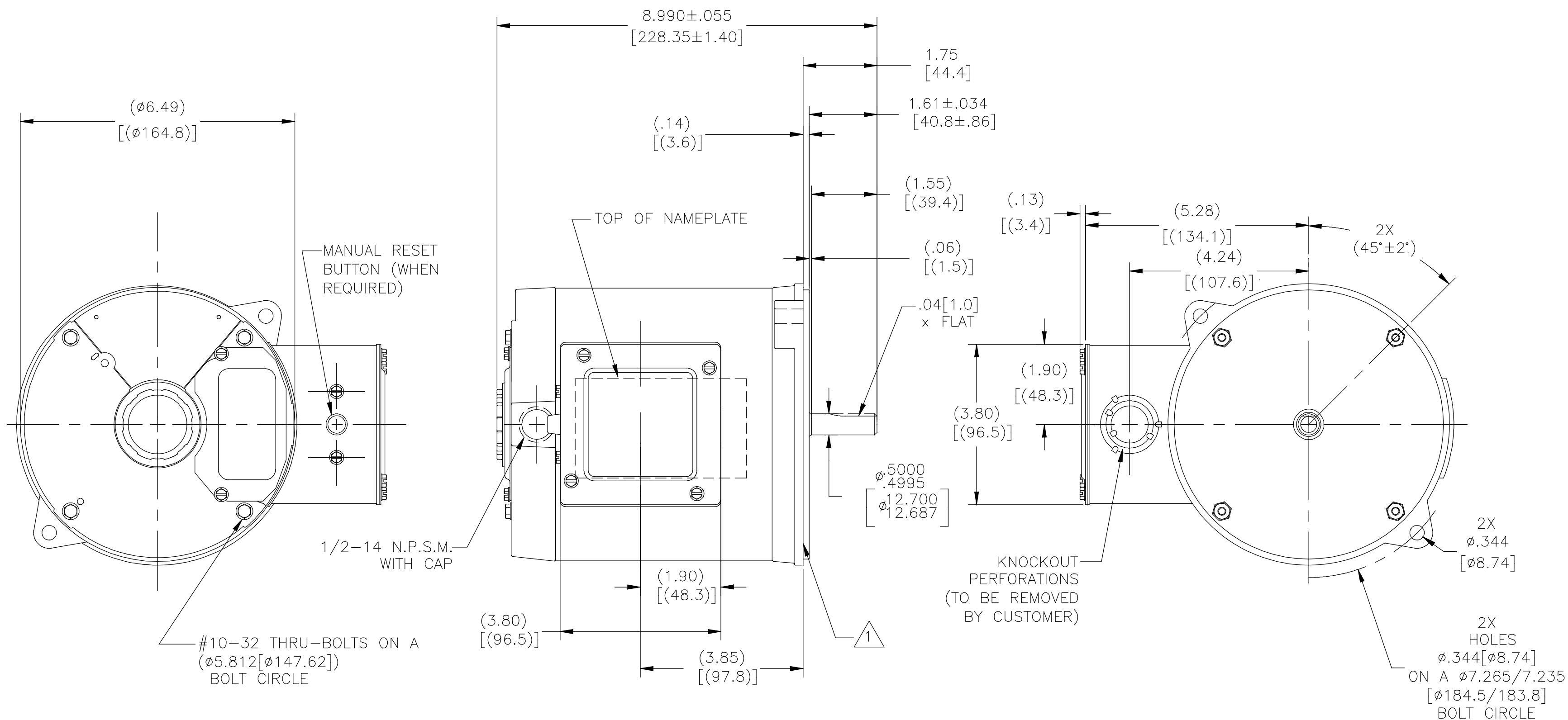
Output HP	1/3 Hp	Output KW	0.25 kW
Frequency	60 Hz	Voltage	208-230/460 V
Current	1.2-1.2/0.6 A	Speed	1725 rpm
Service Factor	1.15	Phase	3
Duty	Continuous	Insulation Class	B
Frame	J56N	Enclosure	Totally Enclosed Non Ventilated
Thermal Protection	Thermally Protected	Ambient Temperature	40 °C
UL	Recognized	CSA	Y
CE	N	Number of Speeds	1

**Technical Specifications**

Electrical Type	Polyphase	Starting Method	Across The Line
Poles	4	Rotation	Reversible Counterclockwise
Mounting	Round	Drive End Bearing	Ball
Opp Drive End Bearing	Ball	Frame Material	Rolled Steel
Shaft Type	Flat	Overall Length	8.99 in
Frame Length	4.50 in	Shaft Diameter	0.500 in
Shaft Extension	1.75 in		
Connection Drawing	17050303.PCX	Outline Drawing	C345-S01

This is an uncontrolled document once printed or downloaded and is subject to change without notice. Date Created:11/28/2022

REV	ECO	REV BY	DATE	APPD	DATE
C	ECO-0169531	D.SURYAWANSHI	06/26/2019		



NOTES:

1. FACE OF MOUNTING FLANGE IS PERPENDICULAR TO SHAFT CENTERLINE WITHIN .004[.10] T.I.R.

2. SHAFT RUNOUT NOT TO EXCEED .002[.05] T.I.R.

ALL DIMENSIONS SHOWN IN PARENTHESIS ARE REFERENCE DIMENSIONS.

<p>GEOMETRIC CHARACTERISTICS &amp; SYMBOLS</p> <p>— FLATNESS</p> <p>— STRAIGHTNESS</p> <p>∠ ANGULARITY</p> <p>⊥ PERPENDICULARITY (SQUARENESS)</p> <p>// PARALLELISM</p> <p>○ ROUNDNESS (CIRCULARITY)</p> <p>⊘ CYLINDRICITY</p> <p>△ PROFILE OF ANY SURFACE</p> <p>⌒ PROFILE OF ANY LINE</p> <p>↑ RUNOUT</p> <p>⊕ TRUE POSITION</p> <p>⊙ CONCENTRICITY</p> <p>≡ SYMMETRY</p> <p>ASME Y14.5M 1994</p>	<p>UNLESS OTHERWISE SPECIFIED DIM. TOLERANCES ARE AS FOLLOWS:</p> <p>INCH X XX XXX XXXX</p> <p>mm ±0.1 ±0.2 ±0.005 ±0.0005</p> <p>mm ±0.5 ±0.13 ±0.013</p> <p>ANG. ±.50 DEG</p> <p>REMOVE BURRS &amp; BREAK SHARP EDGES:</p> <p>INCH .003-.015 mm 0.1-0.4</p> <p>CORNER FILLETS TO:</p> <p>INCH .020 mm 0.5</p> <p>MACHINE SURFACES:</p> <p>INCH 125 mm 3.2</p> <p>METRIC DIMS. SHOWN IN [BRACKETS]</p>
---	---

DR BY:	T.ZHAO	12-26-2011
APPD:	M.HE	12-26-2011
THIRD ANGLE PROJECTION	EDS DATE	11-11-2011
	FORMAT	REV H

CONFIDENTIAL: THIS DRAWING AND ITS INFORMATION ARE THE EXCLUSIVE AND CONFIDENTIAL PROPERTY OF REGAL-BELOIT CORPORATION AND ARE NOT TO BE DISCLOSED, DUPLICATED, DISTRIBUTED OR OTHERWISE USED WITHOUT THE WRITTEN CONSENT OF REGAL-BELOIT CORPORATION. -ALL RIGHTS RESERVED.



DESCRIPTION		MODEL-PFHP-56FR OUTLINE	
SIZE	C	DWG NO	C345
SCALE	NONE	SHEET 1	