

PRODUCT INFORMATION PACKET



Model No: C598
Catalog No: C598

General Purpose Farm Duty Motor, 1.5/.44 HP, 1 Ph, 60 Hz, 230 V, 1800 RPM, N56H Frame, TEAO



Regal and Century are trademarks of Regal Rexnord Corporation or one of its affiliated companies.
©2023 Regal Rexnord Corporation, All Rights Reserved. MC017097E





Nameplate Specifications

Output HP	1.5/.44 Hp	Output KW	1.1 kW
Frequency	60 Hz	Voltage	230 V
Current	7.4/4.4 A	Speed	1725/1140 rpm
Service Factor	1	Phase	1
Efficiency	77 %	Duty	Continuous
Insulation Class	B	Frame	N56H
Enclosure	Totally Enclosed Air Over	Thermal Protection	Thermally Protected
Ambient Temperature	40 °C	UL	Recognized
CSA	Y	CE	N
Number of Speeds	2-2-VT		

Technical Specifications

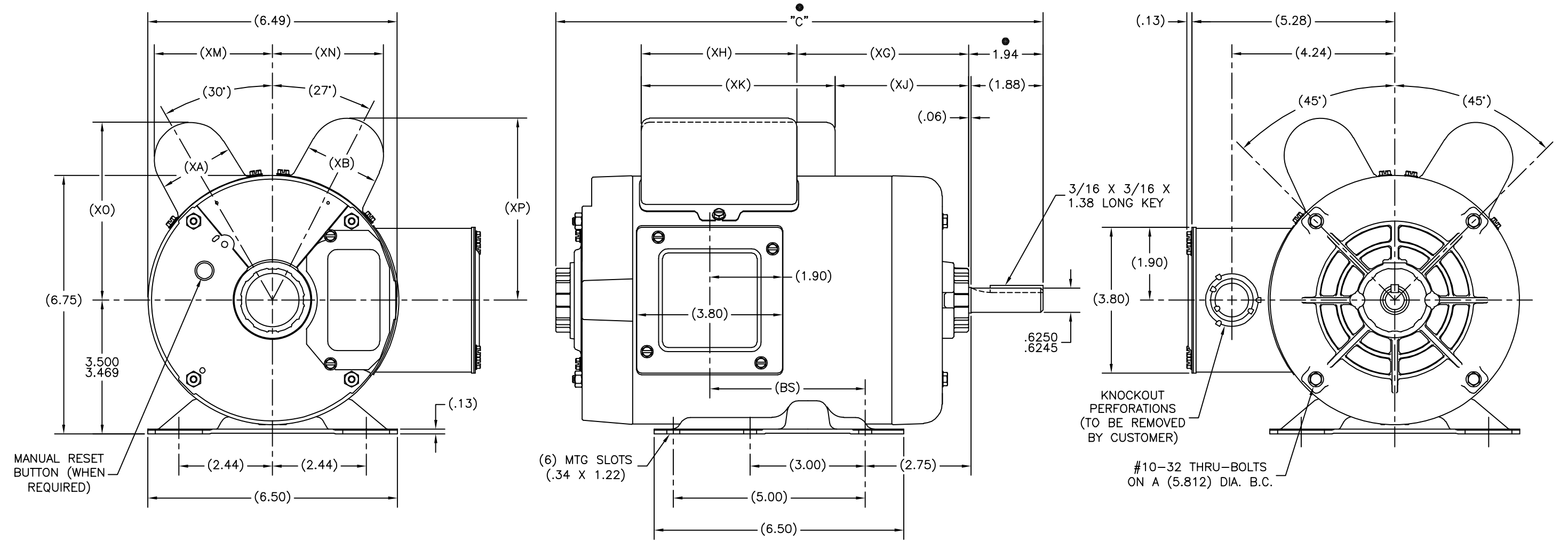
Electrical Type	Capacitor Start, Capacitor Run, MultiSpeed	Starting Method	Across The Line
Poles	4/6	Rotation	Reversible Counterclockwise
Mounting	Rigid Base	Drive End Bearing	Ball
Opp Drive End Bearing	Ball	Frame Material	Rolled Steel
Shaft Type	Keyed	Overall Length	13.19 in
Frame Length	7.25 in	Shaft Diameter	0.625 in
Shaft Extension	1.94 in		
Outline Drawing	174086-S01	Connection Drawing	17050725.PCX

This is an uncontrolled document once printed or downloaded and is subject to change without notice. Date Created:03/15/2023

REV	ECO	REV BY	DATE	APPD	DATE
E	0025372	E.SINECIO	04-13-2012	R.RASCON	04-13-2012

ALL DIMENSIONS SHOWN IN PARENTHESIS ARE REFERENCE DIMENSIONS. ALL OTHER DIMENSIONS ARE TOLERANCED PER THE FOLLOWING CHART UNLESS OTHERWISE SPECIFIED.

- "C" DIM. = +/- .055
- SHAFT EXT. = +/- .034
- LEAD LENGTHS = +/- 1.00
- EXTENDED THRU-BOLTS = +/- .050
- ANGULAR DIM. = +/- 2'



-05															
-04															
-03	CPM	L56H	12.19	3.55	2.01	2.01	2.97	5.06	2.97	5.06	3.09	2.89	4.63	4.74	
-02	CPM	N56H	13.19	4.55	2.01	2.01	3.97	5.06	3.97	5.06	3.09	2.89	4.63	4.74	
-01	CPXM	M56H	12.69	4.05	2.34	1.64	4.21	4.08	3.93	4.64	3.05	2.64	4.30	4.42	
GROUP	TYPE	FRAME	"C"	(BS)	(XA)	(XB)	(XG)	(XH)	(XJ)	(XK)	(XM)	(XN)	(XO)	(XP)	

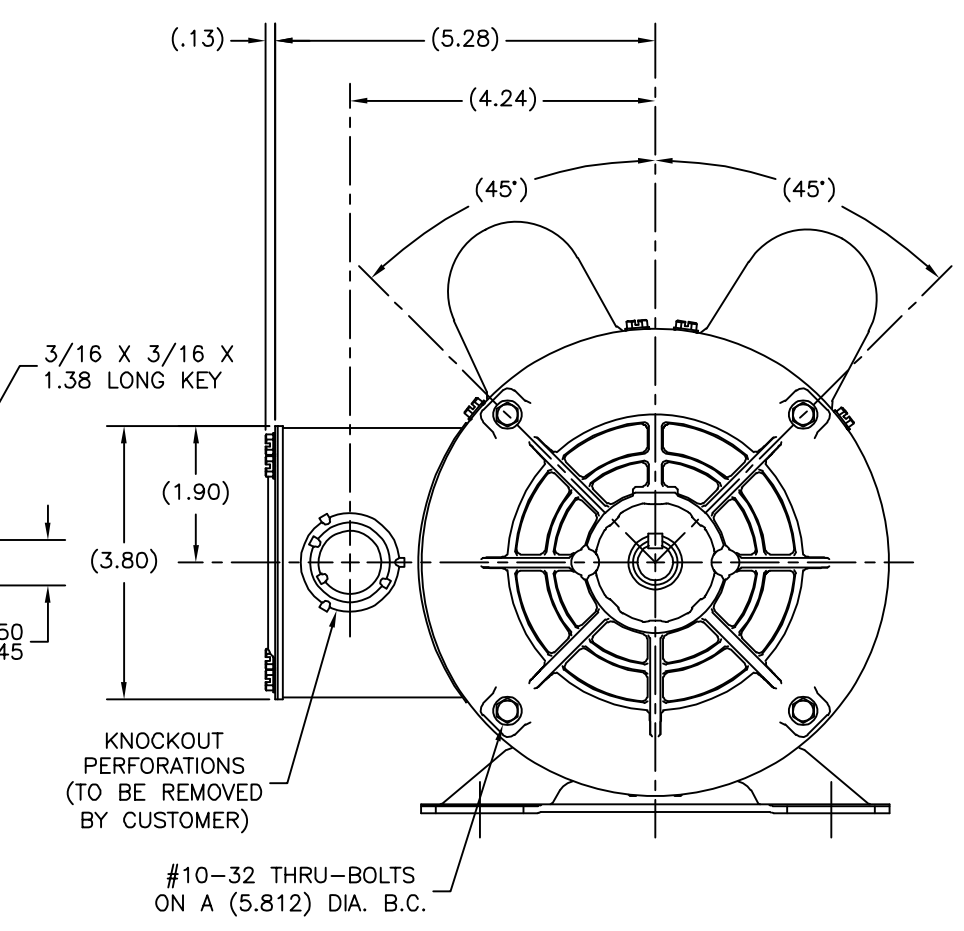
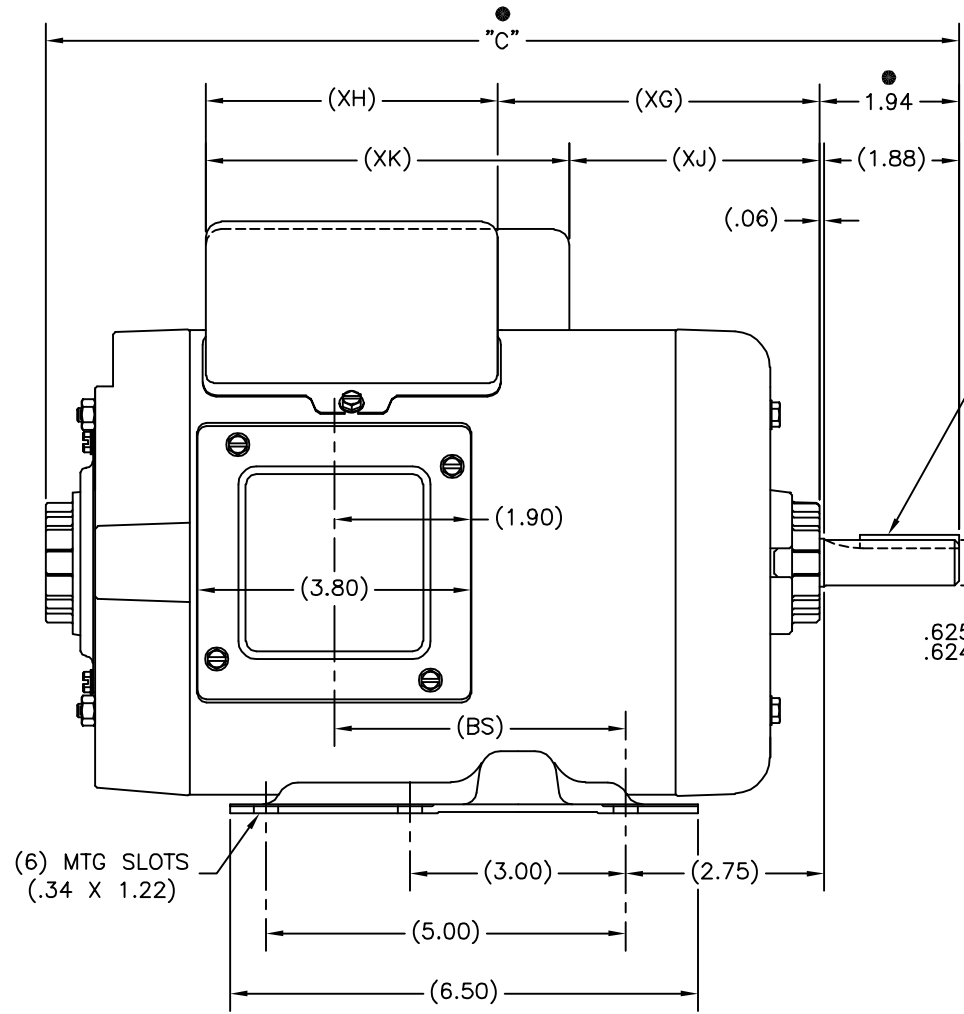
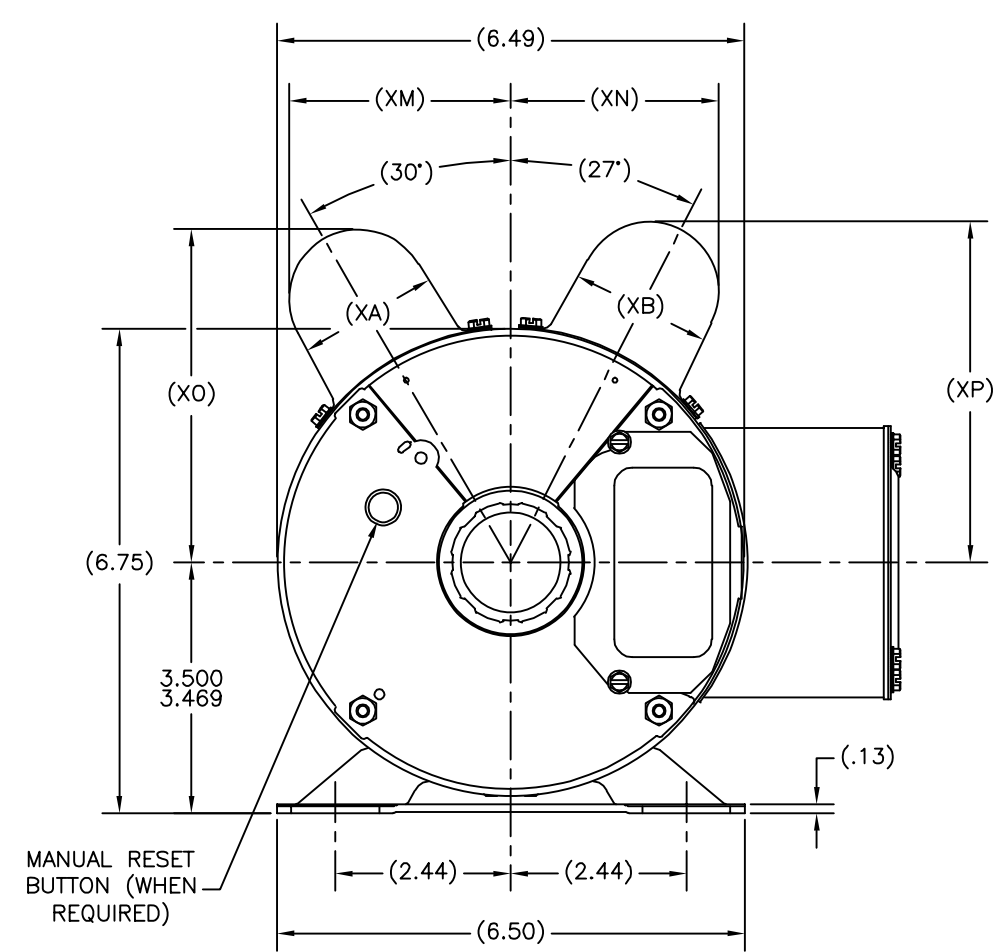
● = CRITICAL DIMENSION

GEOMETRIC CHARACTERISTICS & SYMBOLS ▽ FLATNESS — STRAIGHTNESS ∠ ANGULARITY ⊥ PERPENDICULARITY (SQUARENESS) // PARALLELISM ○ ROUNDNESS (CIRCULARITY) ⊙ CYLINDRICITY ≡ PROFILE OF ANY SURFACE ≡ PROFILE OF ANY LINE ↗ RUNOUT ⊕ TRUE POSITION ⊙ CONCENTRICITY = SYMMETRY	UNLESS OTHERWISE SPECIFIED DIM. TOLERANCES ARE AS FOLLOWS: INCH ±.1 ±.02 ±.005 ±.0005 mm ±0.5 ±0.13 ±0.013 ANG. ±.50 DEG REMOVE BURRS & BREAK SHARP EDGES: INCH .003-.015 mm 0.1-0.4 CORNER FILLETS TO: INCH .020 mm 0.5 MACHINE SURFACES: INCH 125 mm 3.2 METRIC DIMS. SHOWN IN [BRACKETS]	DR BY: PLM	12-16-1986	REGAL-BELOIT CORPORATION MODEL-CFHP-56FR OUTLINE
		APPD: MH	01-06-1987	
THRD ANGLE PROJECTION		CONFIDENTIAL: THIS DRAWING AND ITS INFORMATION ARE THE EXCLUSIVE AND CONFIDENTIAL PROPERTY OF REGAL-BELOIT CORPORATION AND ARE NOT TO BE DISCLOSED, DUPLICATED, DISTRIBUTED OR OTHERWISE USED WITHOUT THE WRITTEN CONSENT OF REGAL-BELOIT CORPORATION. ALL RIGHTS RESERVED.		SIZE D
		SCALE NONE		DWG NO 174086
		SHEET 1		

REVISION: ECO	REVISADO POR: E.SINECIO	FECHA: 04-13-2012	APROBADO POR: R.RASCON	FECHA: 04-13-2012
E	0025372			

ALL DIMENSIONS SHOWN IN PARENTHESIS ARE REFERENCE DIMENSIONS. ALL OTHER DIMENSIONS ARE TOLERANCED PER THE FOLLOWING CHART UNLESS OTHERWISE SPECIFIED.

- "C" DIM. = +/- .055
- SHAFT EXT. = +/- .034
- LEAD LENGTHS = +/- 1.00
- EXTENDED THRU-BOLTS = +/- .050
- ANGULAR DIM. = +/- 2'



-05															
-04															
-03	CPM	L56H	12.19	3.55	2.01	2.01	2.97	5.06	2.97	5.06	3.09	2.89	4.63	4.74	
-02	CPM	N56H	13.19	4.55	2.01	2.01	3.97	5.06	3.97	5.06	3.09	2.89	4.63	4.74	
-01	CPXM	M56H	12.69	4.05	2.34	1.64	4.21	4.08	3.93	4.64	3.05	2.64	4.30	4.42	
GROUP	TYPE	FRAME	"C"	(BS)	(XA)	(XB)	(XG)	(XH)	(XJ)	(XK)	(XM)	(XN)	(XO)	(XP)	

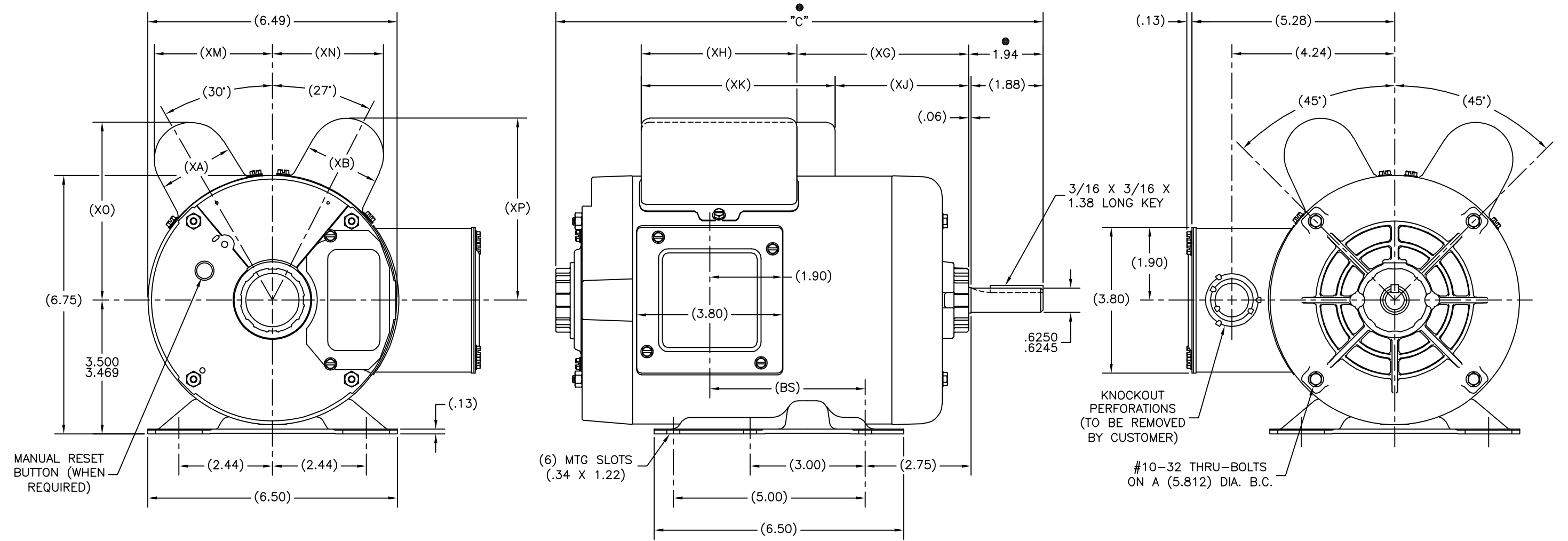
● = CRITICAL DIMENSION

CARACTERISTICAS DE GEOMETRIA Y SIMBOLOS: □ PLANICIDAD — RECTITUD ∠ ANGULARIDAD ⊥ PERPENDICULARIDAD (A ESCUADRA) // PARALELISMO ○ REDONDEZ (CIRCULARIDAD) Ⓢ CILINDRICIDAD Ⓜ PERFIL DE CUALQUIER SUPERFICIE Ⓜ PERFIL DE CUALQUIER LINEA Ⓜ VARIACION ⊙ POSICION REAL ⊙ CONCENTRICIDAD = SIMETRIA	A MENOS QUE SE ESPECIFIQUE DE OTRA MANERA, LAS TOLERANCIAS DE LAS DIMS, SON LAS SIGUIENTES: PULG ±.1 ±.02 ±.005 ±.0005 mm ±0.5 ±0.13 ±0.013 ANG ±50 GRADOS ELIMINAR REBASAS Y ORILLAS FILOSAS DEL BORDE. PULG .003-.015 mm 0.1-0.4 FILETEAR ESQUINA: PULG .020 mm 0.5 MAQUINAR SUPERFICIES PULG 125 mm 3.2 DIMS METRICAS MOSTRADAS [PARENTESIS]	DIBUJADO POR: PLM APROBADO POR: MH TERCER ANGULO DE PROYECCION:	12-16-1986 01-06-1987 FECHA EDS: 02-22-2008 REV. FORMATO: G	DESCRIPCION: MODEL-CFHP-56FR OUTLINE TAMAÑO: D NUMERO DE DIBUJO: 174086 ESCALA: NONE HOJA: 1
--	--	---	--	---

版本	ECO	编制	日期	批准	日期
E	0025372	E.SINECIO	04-13-2012	R.RASCON	04-13-2012

ALL DIMENSIONS SHOWN IN PARENTHESIS ARE REFERENCE DIMENSIONS. ALL OTHER DIMENSIONS ARE TOLERANCED PER THE FOLLOWING CHART UNLESS OTHERWISE SPECIFIED.

- "C" DIM. = +/- .055
- SHAFT EXT. = +/- .034
- LEAD LENGTHS = +/- 1.00
- EXTENDED THRU-BOLTS = +/- .050
- ANGULAR DIM. = +/- 2'



-05														
-04														
-03	CPM	L56H	12.19	3.55	2.01	2.01	2.97	5.06	2.97	5.06	3.09	2.89	4.63	4.74
-02	CPM	N56H	13.19	4.55	2.01	2.01	3.97	5.06	3.97	5.06	3.09	2.89	4.63	4.74
-01	CPXM	M56H	12.69	4.05	2.34	1.64	4.21	4.08	3.93	4.64	3.05	2.64	4.30	4.42
GROUP	TYPE	FRAME	"C"	(BS)	(XA)	(XB)	(XG)	(XH)	(XJ)	(XK)	(XM)	(XN)	(XO)	(XP)

● = CRITICAL DIMENSION

形位公差 平面度 直线度 倾斜度 垂直度 平行度 圆度 圆柱度 面轮廓度 线轮廓度 圆跳动 位置度 同轴度 对称度	除另有注明 尺寸公差如下: 英寸 X XX XXX XXXX 英寸 ±.1 ±.02 ±.005 ±.0005 毫米 ±0.5 ±0.13 ±0.013 清理毛刺和尖棱 英寸 .003-.015 毫米 0.1-0.4 内圆角 英寸 .020 毫米 0.5 表面粗糙度 英制 125 米制 3.2 米制尺寸显示在 []	绘图: PLM	12-16-1986	名称 MODEL-CFHP-56FR OUTLINE
		批准: MH	01-06-1987	
第三角投影		图框格式版本 G		图号 174086
机密: 本图纸及相关信息所有权归REGAL-BELOIT CORPORATION 未经REGAL-BELOIT CORPORATION书面授权, 不得泄露、 复制、传播或作其他用途。—版权所有				比例 NONE
ASME Y14.5M 1994				页号 1