

# PRODUCT INFORMATION PACKET



Model No: C662

Catalog No: C662

Condenser Fan Motor, 3/4 HP, 1 Ph, 60 Hz, 460/208-230 V, 1200 RPM, L56Y Frame, OPEN



Regal and Century are trademarks of Regal Rexnord Corporation or one of its affiliated companies.

©2023 Regal Rexnord Corporation, All Rights Reserved. MC017097E





**Nameplate Specifications**

|                    |                            |                     |                      |
|--------------------|----------------------------|---------------------|----------------------|
| Output HP          | <b>3/4 Hp</b>              | Output KW           | <b>0.56 kW</b>       |
| Frequency          | <b>60 Hz</b>               | Voltage             | <b>460/208-230 V</b> |
| Current            | <b>2.1/4.3-4.2 A</b>       | Speed               | <b>1075 rpm</b>      |
| Service Factor     | <b>1</b>                   | Phase               | <b>1</b>             |
| Duty               | <b>Continuous</b>          | Insulation Class    | <b>B</b>             |
| Frame              | <b>L56Y</b>                | Enclosure           | <b>Open Enclosed</b> |
| Thermal Protection | <b>Thermally Protected</b> | Ambient Temperature | <b>60 °C</b>         |
| UL                 | <b>Recognized</b>          | CSA                 | <b>Y</b>             |
| CE                 | <b>N</b>                   | Number of Speeds    | <b>1</b>             |

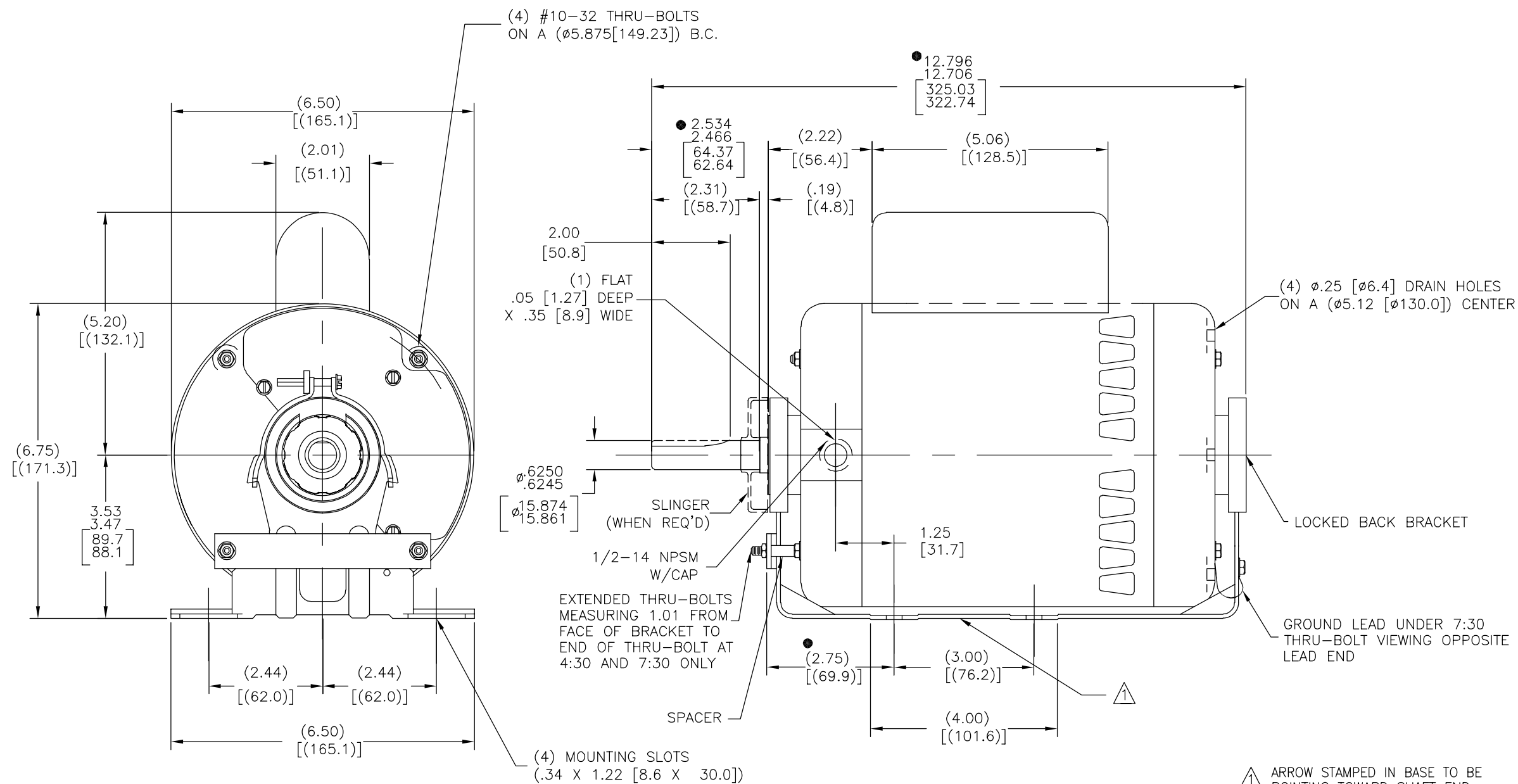
**Technical Specifications**

|                       |  |                   |                                    |
|-----------------------|--|-------------------|------------------------------------|
| Electrical Type       | <b>Permanent Split Capacitor, Single Or Dual Voltage</b> | Starting Method   | <b>Across The Line</b>             |
| Poles                 | <b>6</b>   | Rotation          | <b>Reversible Counterclockwise</b> |
| Mounting              | <b>Round</b>   | Drive End Bearing | <b>Ball</b>                        |
| Opp Drive End Bearing | <b>Ball</b>  | Frame Material    | <b>Rolled Steel</b>                |
| Shaft Type            | <b>Flat</b>  | Overall Length    | <b>12.80 in</b>                    |
| Frame Length          | <b>6.25 in</b>   | Shaft Diameter    | <b>0.625 in</b>                    |
| Shaft Extension       | <b>2.53 in</b>   |                   |                                    |
| Connection Drawing    | <b>17945803.PCX</b>                                      | Outline Drawing   | <b>C662-S01</b>                    |

This is an uncontrolled document once printed or downloaded and is subject to change without notice. Date Created:03/15/2023

|      |       |      |
|------|-------|------|
| TYPE | FRAME | FORM |
| CX   | J56   | K    |

|     |         |         |            |        |            |
|-----|---------|---------|------------|--------|------------|
| REV | ECO     | REV BY  | DATE       | APPD   | DATE       |
| H   | 0024901 | H.ZHANG | 03-19-2012 | B.SHEN | 03-19-2012 |



GEOMETRIC CHARACTERISTICS & SYMBOLS

- FLATNESS
- STRAIGHTNESS
- ∠ ANGULARITY
- ⊥ PERPENDICULARITY (SQUARENESS)
- // PARALLELISM
- ROUNDNESS (CIRCULARITY)
- ⊘ CYLINDRICITY
- △ PROFILE OF ANY SURFACE
- ∧ PROFILE OF ANY LINE
- ↗ RUNOUT
- ⊕ TRUE POSITION
- ◎ CONCENTRICITY
- ≡ SYMMETRY

ASME Y14.5M 1994

UNLESS OTHERWISE SPECIFIED DIM. TOLERANCES ARE AS FOLLOWS:

|      |      |       |        |        |
|------|------|-------|--------|--------|
| INCH | ±.1  | ±.02  | ±.005  | ±.0005 |
| mm   | ±0.5 | ±0.13 | ±0.013 |        |

ANG. ±.50 DEG  
REMOVE BURRS & BREAK SHARP EDGES:  
INCH .003-.015 mm 0.1-0.4  
CORNER FILLETS TO:  
INCH .020 mm 0.5  
MACHINE SURFACES:  
INCH 125 mm 3.2

METRIC DIMS. SHOWN IN [BRACKETS]

DR BY: AJM 04-24-1991

APPD: MLC 04-30-1991

THIRD ANGLE PROJECTION

EDS DATE 11-11-2011  
FORMAT REV G

CONFIDENTIAL: THIS DRAWING AND ITS INFORMATION ARE THE EXCLUSIVE AND CONFIDENTIAL PROPERTY OF REGAL-BELOIT CORPORATION AND ARE NOT TO BE DISCLOSED, DUPLICATED, DISTRIBUTED OR OTHERWISE USED WITHOUT THE WRITTEN CONSENT OF REGAL-BELOIT CORPORATION. -ALL RIGHTS RESERVED.

REGAL-BELOIT CORPORATION

DESCRIPTION: 0056 DWG 0-LINE BB OP/EN CUSHION BASE

SIZE C DWG NO C662

SCALE NONE SHEET 1

4

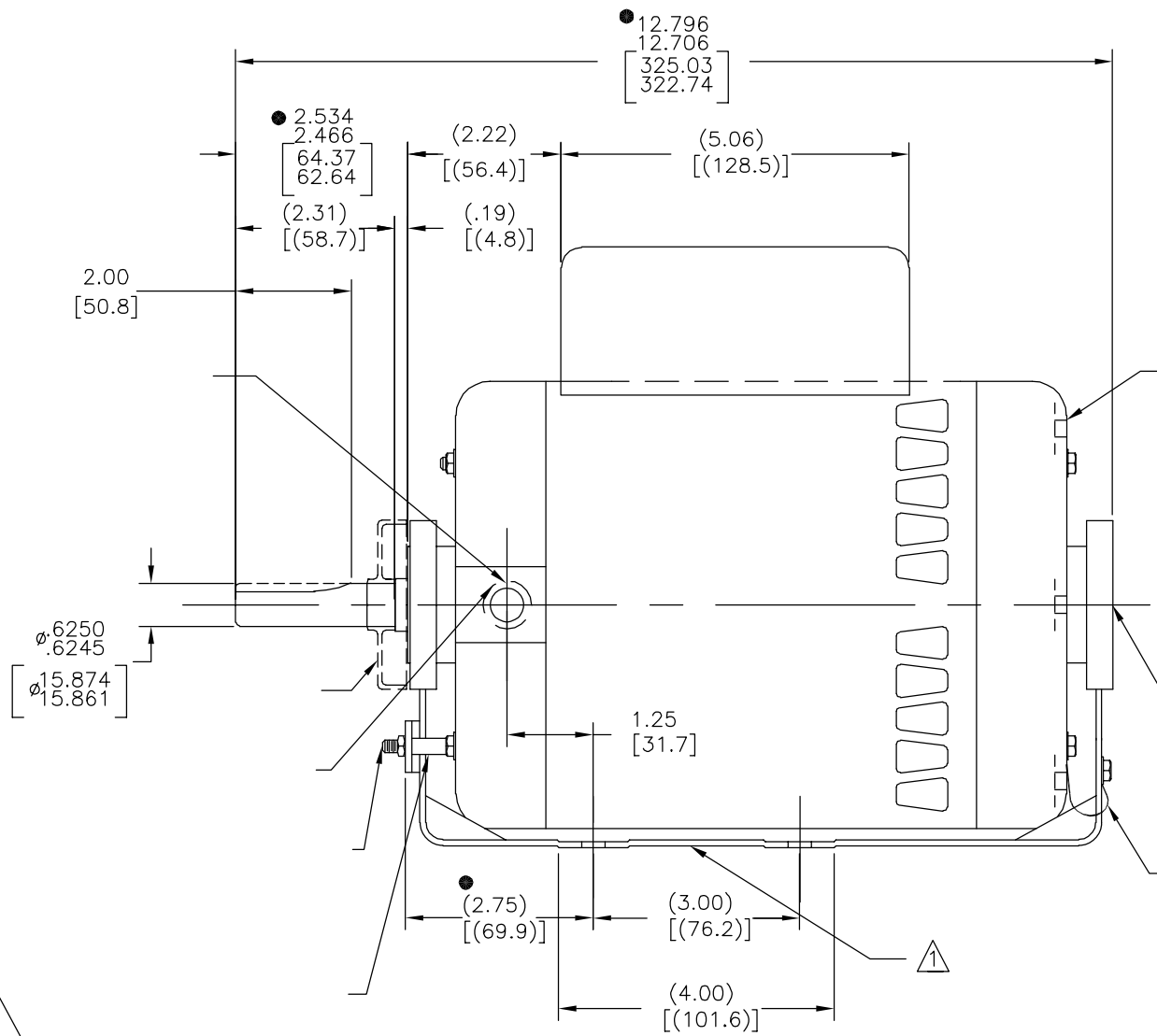
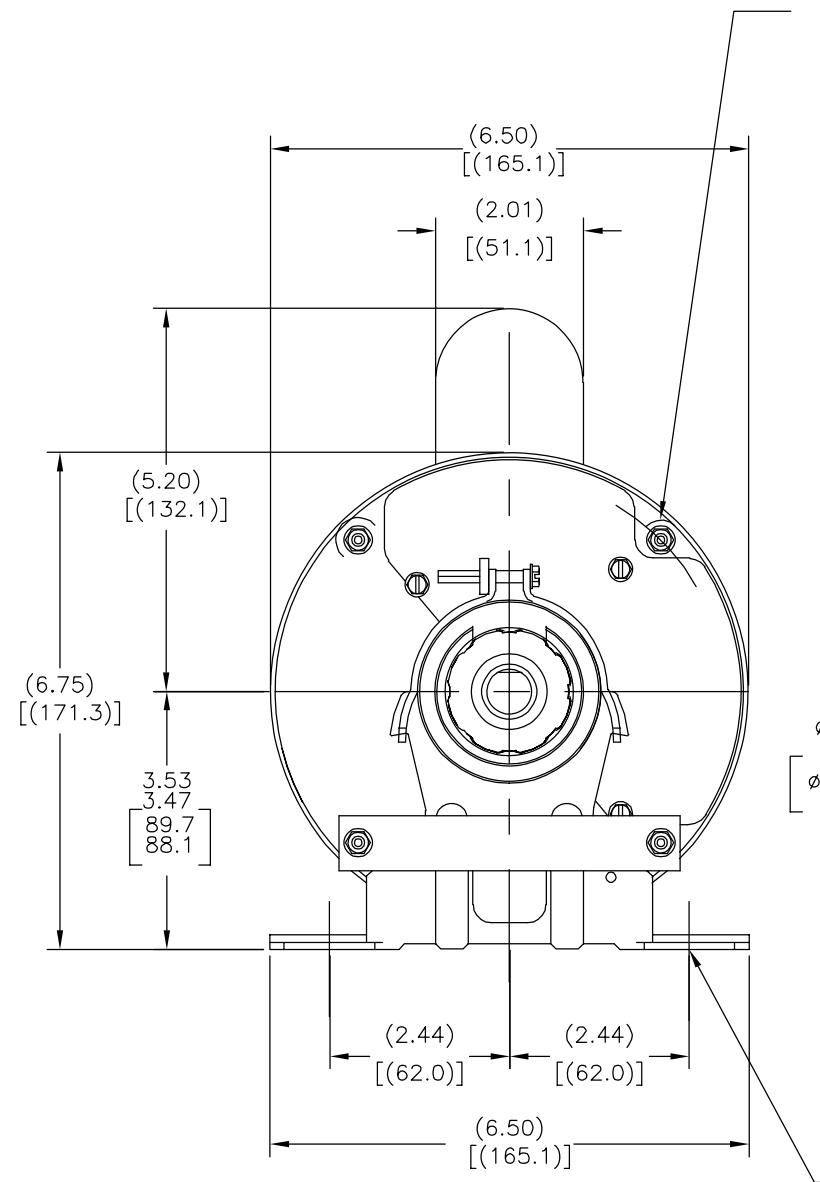
3

2

1

|    |     |   |
|----|-----|---|
| CX | J56 | K |
|----|-----|---|

|           |         |               |            |               |            |
|-----------|---------|---------------|------------|---------------|------------|
| REVISION: | ECO     | REVISADO POR: | FECHA:     | APROBADO POR: | FECHA:     |
| H         | 0024901 | H.ZHANG       | 03-19-2012 | B.SHEN        | 03-19-2012 |



CARACTERISTICAS DE GEOMETRIA Y SIMBOLOS

- PLANICIDAD
- RECTITUD
- ∠ ANGULARIDAD
- ⊥ PERPENDICULARIDAD (A ESCUADRA)
- // PARALELISMO
- REDONDEZ (CIRCULARIDAD)
- ⊘ CILINDRICIDAD
- △ PERFIL DE CUALQUIER SUPERFICIE
- ∧ PERFIL DE CUALQUIER LINEA
- ∩ VARIACION
- ⊕ POSICION REAL
- ⊙ CONCENTRICIDAD
- = SIMETRIA

ASME Y14.5M 1994

A MENOS QUE SE ESPECIFIQUE DE OTRA MANERA, LAS TOLERANCIAS DE LAS DIMS; SON LAS SIGUIENTES:

PULG ±.1 ±.02 ±.005 ±.0005  
 mm ±0.5 ±0.13 ±0.013

ANG. ±.50 GRADOS

ELIMINAR REBABAS Y ORILLAS FILOSAS DEL BORDE.

PULG .003-.015 mm 0.1-0.4

FILETEAR ESQUINA: PULG .020 mm 0.5

MAQUINAR SUPERFICIES

PULG 125 mm .32

DIMS METRICAS MOSTRADAS [PARENTESIS]

|   |     |                       |
|---|-----|-----------------------|
| DIBUJADO POR:   | AJM | 04-24-1991            |
| APROBADO POR:   | MLC | 04-30-1991            |
| TERCER ANGULO DE PROYECCION   | ⊕   | FECHA EDS: 11-11-2011 |
|   |     | REV. FORMATO: G       |
| CONFIDENCIAL: ESTE DIBUJO Y SU INFORMACION SON PROPIEDAD DE USO EXCLUSIVO Y CONFIDENCIAL DE REGAL-BELOIT CORPORATION. Y NO DEBERAN SER REVELADOS, DUPLICADOS, DISTRIBUIDOS O USARSE DE OTRA MANERA SIN EL CONSENTIMIENTO ESCRITO DE REGAL-BELOIT CORPORATION. -TODOS LOS DERECHOS RESERVADOS. |     |                       |

|   |                        |
|---|------------------------|
|   |                        |
| DESCRIPCION:<br>0056 DWG 0-LINE BB OP/EN CUSHION BASE |                        |
| TAMAÑO: C   | NUMERO DE DIBUJO: C662 |
| ESCALA: NONE  | HOJA: 1                |

4

3

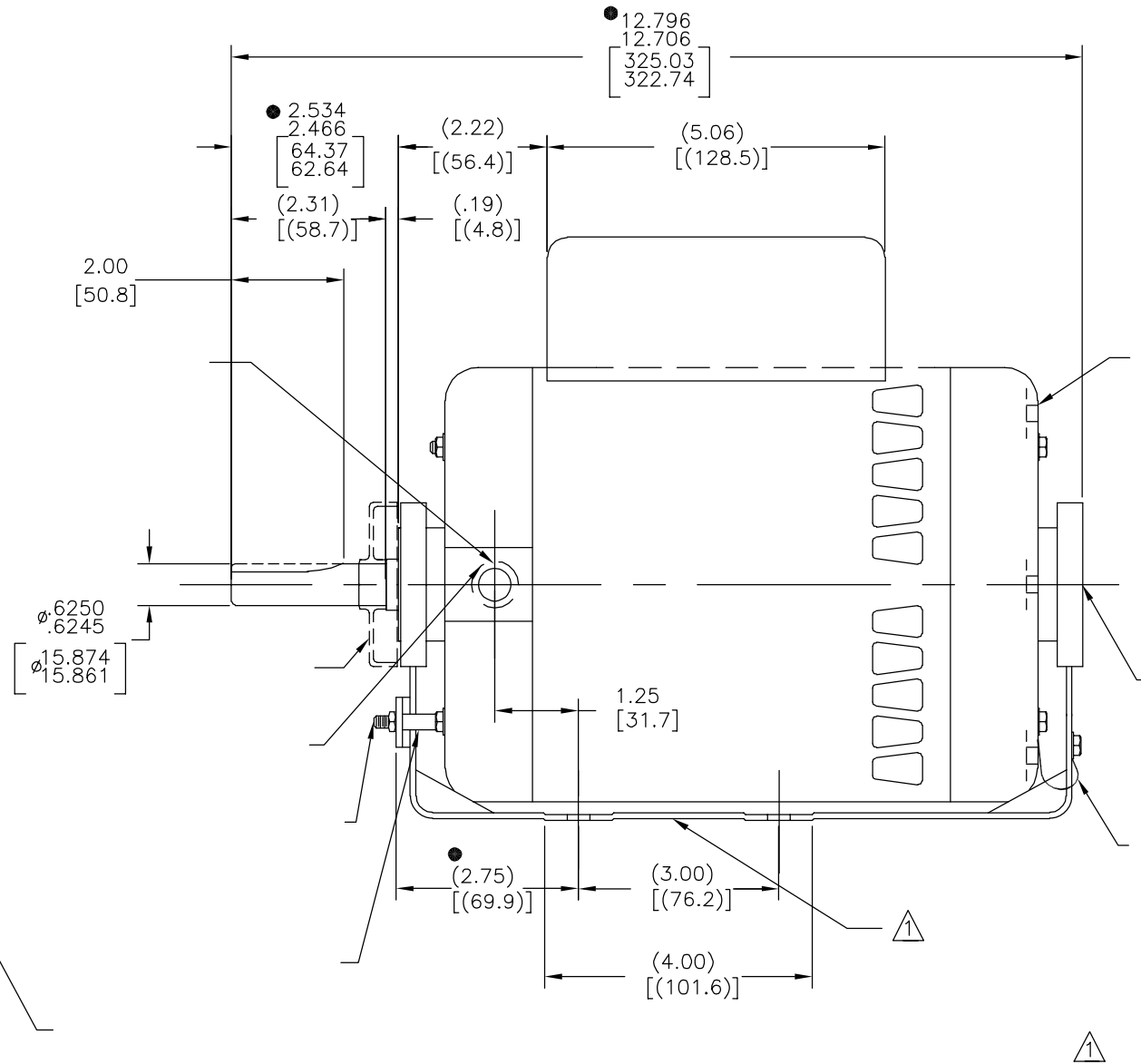
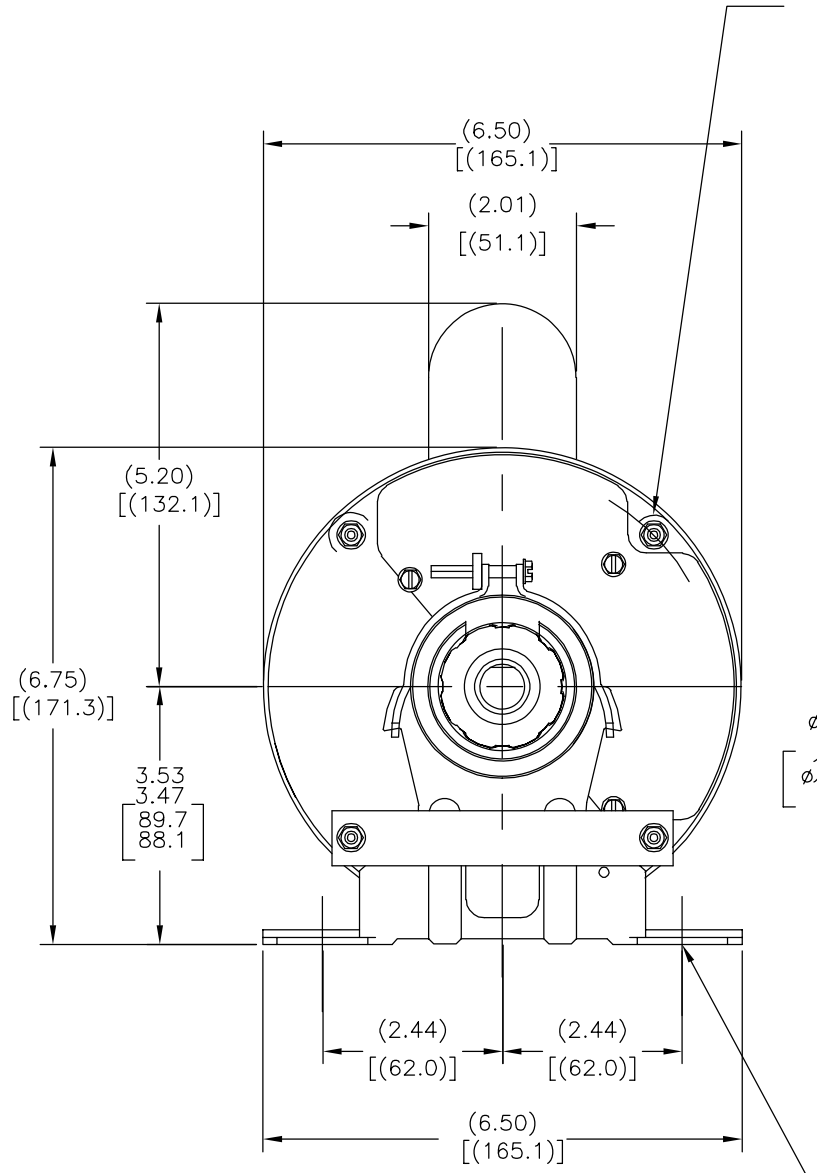
2

1

4 3 2 1

|    |     |   |
|----|-----|---|
| CX | J56 | K |
|----|-----|---|

|    |         |         |            |        |            |
|----|---------|---------|------------|--------|------------|
| 版本 | ECO     | 编制      | 日期         | 批准     | 日期         |
| H  | 0024901 | H.ZHANG | 03-19-2012 | B.SHEN | 03-19-2012 |



形位公差

- 平面度
- 直线度
- ∠ 倾斜度
- ⊥ 垂直度
- // 平行度
- 圆度
- ⊘ 圆柱度
- △ 面轮廓度
- ∩ 线轮廓度
- ↗ 圆跳动
- ⊕ 位置度
- ⊙ 同轴度
- ≡ 对称度

ASME Y14.5M 1994

除另有注明  
尺寸公差如下:

|    |      |       |        |        |
|----|------|-------|--------|--------|
| 英寸 | ±.1  | ±.02  | ±.005  | ±.0005 |
| 毫米 | ±0.5 | ±0.13 | ±0.013 |        |

角度 ±.50 度  
清理毛刺和尖棱  
英寸 .003-.015 毫米 0.1-0.4  
内圆角  
英寸 .020 毫米 0.5  
表面粗糙度  
英制 125 米制 3.2

米制尺寸显示在 [ ]

|  |     |                                 |
|--|-----|---------------------------------|
| 绘图:  | AJM | 04-24-1991                      |
| 批准:  | MLC | 04-30-1991                      |
| 第三角投影  |     | 图纸格式发布日期 11-11-2011<br>图纸格式版本 G |
| 机密: 本图纸及相关信息所有权归REGAL-BELOIT CORPORATION<br>未经REGAL-BELOIT CORPORATION书面授权, 不得泄露、<br>复制、传播或作其他用途。—版权所有 |     |                                 |

|    |                                       |
|----|---------------------------------------|
|    |                                       |
| 名称 | 0056 DWG O-LINE BB OP/EN CUSHION BASE |
| 图幅 | C                                     |
| 图号 | C662                                  |
| 比例 | NONE                                  |
| 页号 | 1                                     |

4 3 2 1