

PRODUCT INFORMATION PACKET



Model No: C695ES
Catalog No: C695ES
OBSOLETE-REPLACED BY 056B17DRR70035A1,1,1725,ODP,56,1/60/115/230
General Purpose Motors



Regal and Century are trademarks of Regal Rexnord Corporation or one of its affiliated companies.
©2021 Regal Rexnord Corporation, All Rights Reserved. MC017097E





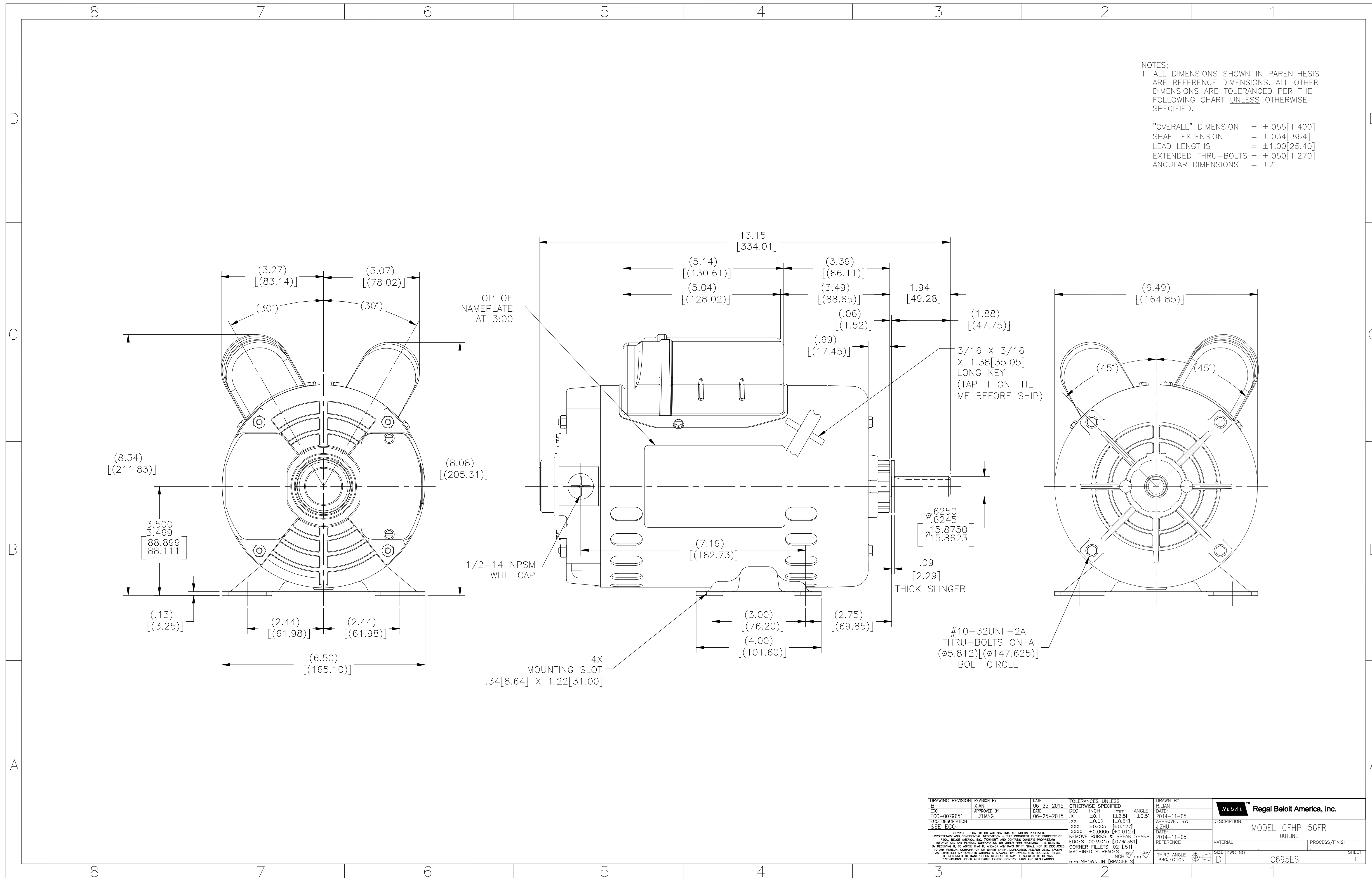
Nameplate Specifications

| | | | |
|---------------------|-----------------|--------------------|------------|
| Output HP | 1 Hp | Output KW | 0.75 kW |
| Frequency | 60 Hz | Voltage | 115/230 V |
| Current | 8.4/4.2 A | Speed | 1725 rpm |
| Service Factor | 1.25 | Phase | 1 |
| Efficiency | 82.6 % | Duty | Continuous |
| Insulation Class | B | Frame | 56 |
| Enclosure | Open Drip Proof | Thermal Protection | None |
| Ambient Temperature | 40 °C | UL | Recognized |
| CSA | Y | CE | Y |
| Number of Speeds | 1 | | |

Technical Specifications

| | | | |
|-----------------------|--|--------------------|----------------------------|
| Electrical Type | Capacitor Start, Capacitor Run, Single Or Dual Voltage | Starting Method | Across The Line |
| Poles | 4 | Rotation | Clockwise/Counterclockwise |
| Mounting | Rigid Base | Drive End Bearing | Ball |
| Opp Drive End Bearing | Ball | Frame Material | Rolled Steel |
| Shaft Type | Keyed | Overall Length | 13.15 in |
| Frame Length | 7.25 in | Shaft Diameter | 0.625 in |
| Shaft Extension | 1.94 in | | |
| Outline Drawing | C695ES-S01 | Connection Drawing | D0000435-001 |

This is an uncontrolled document once printed or downloaded and is subject to change without notice. Date Created:10/11/2021



4

3

2

1

| REV | ECO | REV BY | DATE | APPD | DATE |
|-----|-------------|------------|------------|------------|------------|
| A | ECO-0028953 | A.BAUGHMAN | 11-09-2012 | A.BAUGHMAN | 11-09-2012 |

D

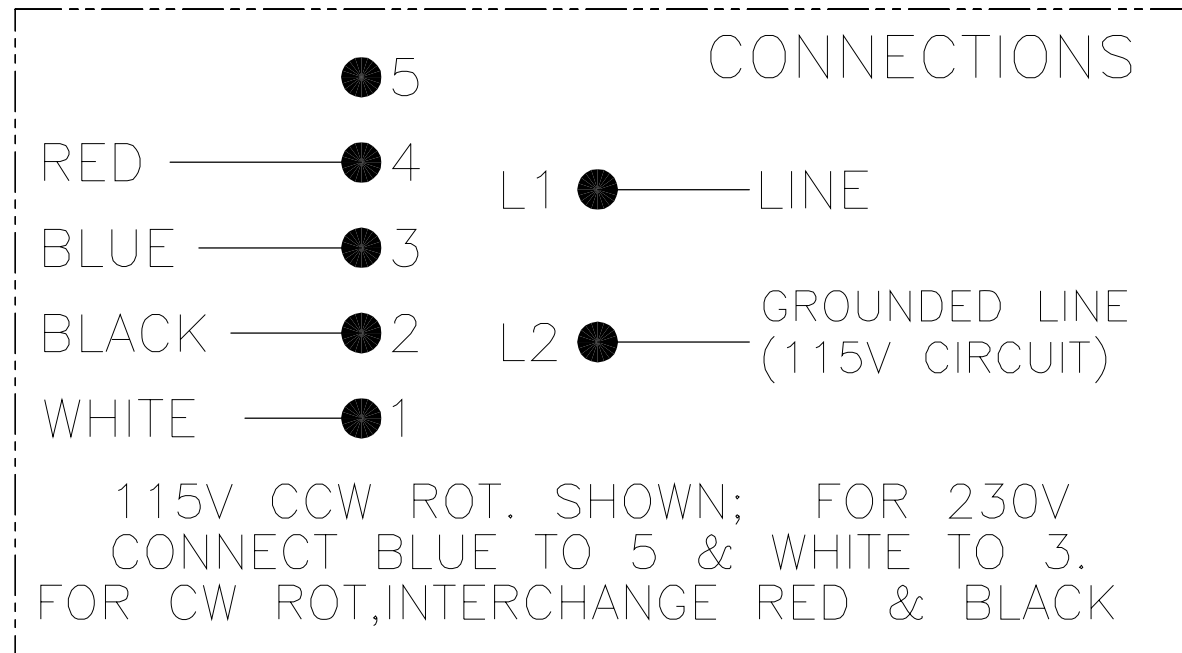
D

C

C

B

B



A

A

4

3

2

1

| | | | | |
|--|---|--|-------------------------------------|---------------------------------|
| GEOMETRIC CHARACTERISTICS & SYMBOLS □ FLATNESS — STRAIGHTNESS ∠ ANGULARITY ⊥ PERPENDICULARITY (SQUARENESS) // PARALLELISM ○ ROUNDNESS (CIRCULARITY) ∅ CYLINDRICITY △ PROFILE OF ANY SURFACE ∩ PROFILE OF ANY LINE ↗ RUNOUT ⊕ TRUE POSITION ⊙ CONCENTRICITY = SYMMETRY ASME Y14.5M 1994 | UNLESS OTHERWISE SPECIFIED DIM. TOLERANCES ARE AS FOLLOWS: INCH X XX XXX XXXX ±.1 ±.02 ±.005 ±.0005 mm ±0.5 ±0.13 ±0.013 ANG. ±.50 DEG REMOVE BURRS & BREAK SHARP EDGES: INCH .003-.015 mm 0.1-0.4 CORNER FILLETS TO: INCH .020 mm 0.5 MACHINE SURFACES: INCH 125 mm 3.2 METRIC DIMS. SHOWN IN [BRACKETS] | DR BY: A.BAUGHMAN | 11-09-2012 | REGAL-BELOIT CORPORATION |
| | | APPD: A.BAUGHMAN | 11-09-2012 | |
| | | THIRD ANGLE PROJECTION | EDS DATE 11-11-2011 FORMAT REV H | SIZE C DWG NO D0000435-001 |
| | | CONFIDENTIAL: THIS DRAWING AND ITS INFORMATION ARE THE EXCLUSIVE AND CONFIDENTIAL PROPERTY OF REGAL-BELOIT CORPORATION AND ARE NOT TO BE DISCLOSED, DUPLICATED, DISTRIBUTED OR OTHERWISE USED WITHOUT THE WRITTEN CONSENT OF REGAL-BELOIT CORPORATION. -ALL RIGHTS RESERVED. | | SCALE NONE SHEET 1 |

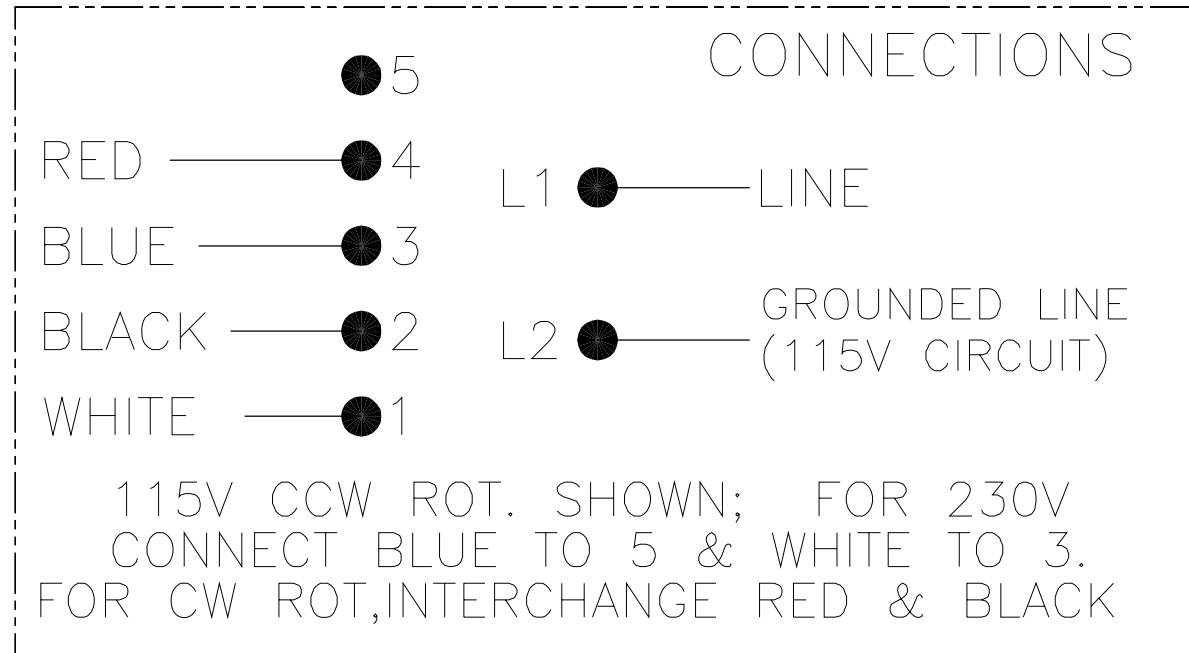
4

3

2

1

| | | | | | |
|-----------|-------------|---------------|------------|---------------|------------|
| REVISION: | ECO | REVISADO POR: | FECHA: | APROBADO POR: | FECHA: |
| A | ECO-0028953 | A.BAUGHMAN | 11-09-2012 | A.BAUGHMAN | 11-09-2012 |



CARACTERISTICAS DE GEOMETRIA Y SIMBOLOS

- ▢ PLANICIDAD
- RECTITUD
- ∠ ANGULARIDAD
- ⊥ PERPENDICULARIDAD (A ESCUADRA)
- // PARALELISMO
- REDONDEZ (CIRCULARIDAD)
- ⊘ CILINDRICIDAD
- △ PERFIL DE CUALQUIER SUPERFICIE
- ∧ PERFIL DE CUALQUIER LINEA
- ∓ VARIACION
- ⊕ POSICION REAL
- ◎ CONCENTRICIDAD
- ≡ SIMETRIA

A MENOS QUE SE ESPECIFIQUE DE OTRA MANERA, LAS TOLERANCIAS DE LAS DIMS; SON LAS SIGUIENTES:

| | | | | |
|---|------------------|------------|--------|--------|
| | X | XX | XXX | XXXX |
| PULG | ±.1 | ±.02 | ±.005 | ±.0005 |
| mm | ±0.5 | ±0.13 | ±0.013 | |
| ANG. | ± 50 GRADOS | | | |
| ELIMINAR REBABAS Y ORILLAS FILOSAS DEL BORDE. | | | | |
| | PULG .003-.015 | mm 0.1-0.4 | | |
| FILETEAR ESQUINA: | PULG .020 mm 0.5 | | | |
| MAQUINAR SUPERFICIES | PULG 125 mm 3.2 | | | |
| DIMS METRICAS MOSTRADAS [PARENTESIS] | | | | |

ASME Y14.5M 1994

| | | |
|---|------------|--|
| DIBUJADO POR: | A.BAUGHMAN | 11-09-2012 |
| APROBADO POR: | A.BAUGHMAN | 11-09-2012 |
| TERCER ANGULO DE PROYECCION | | FECHA EDS: 11-11-2011 REV. FORMATO: H |
| CONFIDENCIAL: ESTE DIBUJO Y SU INFORMACION SON PROPIEDAD DE USO EXCLUSIVO Y CONFIDENCIAL DE REGAL-BELOIT CORPORATION. Y NO DEBERAN SER REVELADOS, DUPLICADOS, DISTRIBUIDOS O USARSE DE OTRA MANERA SIN EL CONSENTIMIENTO ESCRITO DE REGAL-BELOIT CORPORATION. -TODOS LOS DERECHOS RESERVADOS. | | |

| | |
|--|-----------------------------------|
| REGAL REGAL-BELOIT CORPORATION | |
| DESCRIPCION: CONN DIAGRAM-NAMEPLATE | |
| TAMAÑO: C | NUMERO DE DIBUJO: D0000435-001 |
| ESCALA: NONE | HOJA: 1 |

4

3

2

1

4

3

2

1

| 版本 | ECO | 编制 | 日期 | 批准 | 日期 |
|----|-------------|------------|------------|------------|------------|
| A | ECO-0028953 | A.BAUGHMAN | 11-09-2012 | A.BAUGHMAN | 11-09-2012 |

D

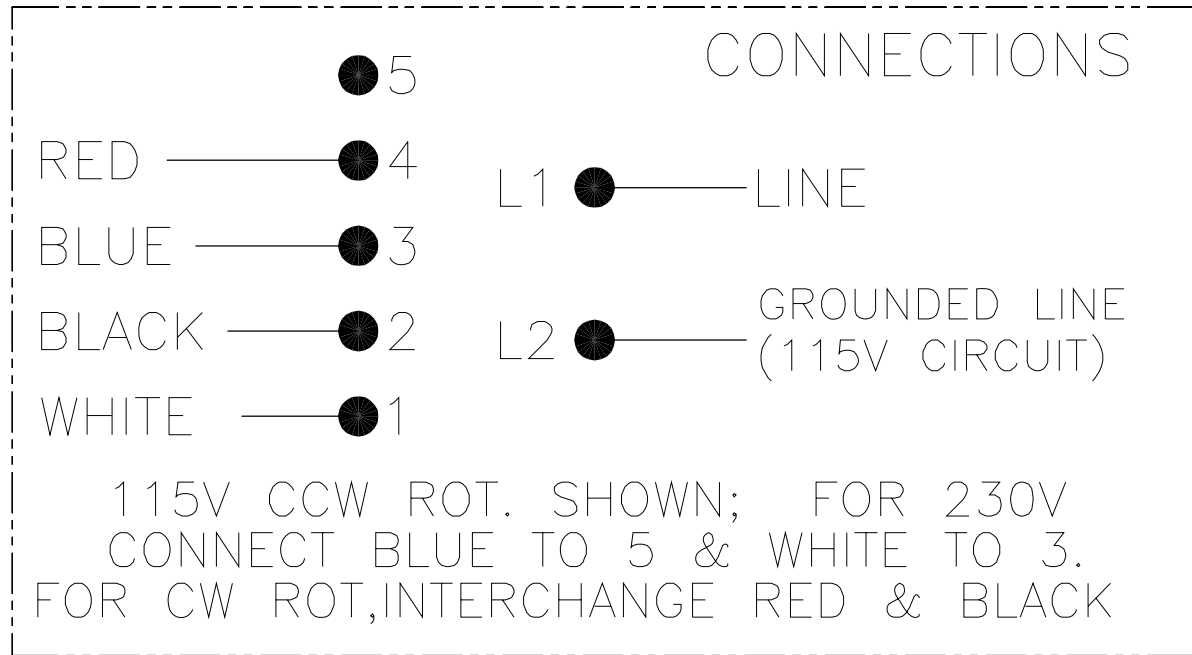
D

C

C

B

B



A

A

4

3

2

1

| | |
|--|---|
| 形位公差 □ 平面度 — 直线度 ∠ 倾斜度 ⊥ 垂直度 ∥ 平行度 ○ 圆度 ⊘ 圆柱度 ⌒ 面轮廓度 △ 线轮廓度 ↗ 圆跳动 ⊕ 位置度 ⊙ 同轴度 ≡ 对称度 | 除另有注明 尺寸公差如下: 英寸 X XX XXX XXXX ±.1 ±.02 ±.005 ±.0005 毫米 ±0.5 ±0.13 ±0.013 角度 ±.50 度 清理毛刺和尖棱 英寸 .003-.015 毫米 0.1-0.4 内圆角 英寸 .020 毫米 0.5 表面粗糙度 英制 125 米制 3.2 |
|--|---|

ASME Y14.5M 1994

米制尺寸显示在L

| | | |
|--|------------|---------------------------------|
| 绘图: | A.BAUGHMAN | 11-09-2012 |
| 批准: | A.BAUGHMAN | 11-09-2012 |
| 第三角投影 | | 图纸格式发布日期 11-11-2011 图纸格式版本 H |
| 机密: 本图纸及相关信息所有权归REGAL-BELOIT CORPORATION 未经REGAL-BELOIT CORPORATION书面授权, 不得泄露、 复制、传播或作其他用途。—版权所有 | | |

| | |
|---------------------------------|------------------------|
| REGAL-BELOIT CORPORATION | |
| 名称 | CONN DIAGRAM-NAMEPLATE |
| 图幅 | C |
| 图号 | D0000435-001 |
| 比例 | NONE |
| 页号 | 1 |