

# PRODUCT INFORMATION PACKET



Model No: C782RB  
Catalog No: C782RB

Belt Drive Fan Motor, 1.0 HP, 1 Ph, 60/50 Hz, 230/115 V, 1800 RPM, L56None Frame, TENV



Regal and Century are trademarks of Regal Rexnord Corporation or one of its affiliated companies.  
©2025 Regal Rexnord Corporation, All Rights Reserved. MC017097E





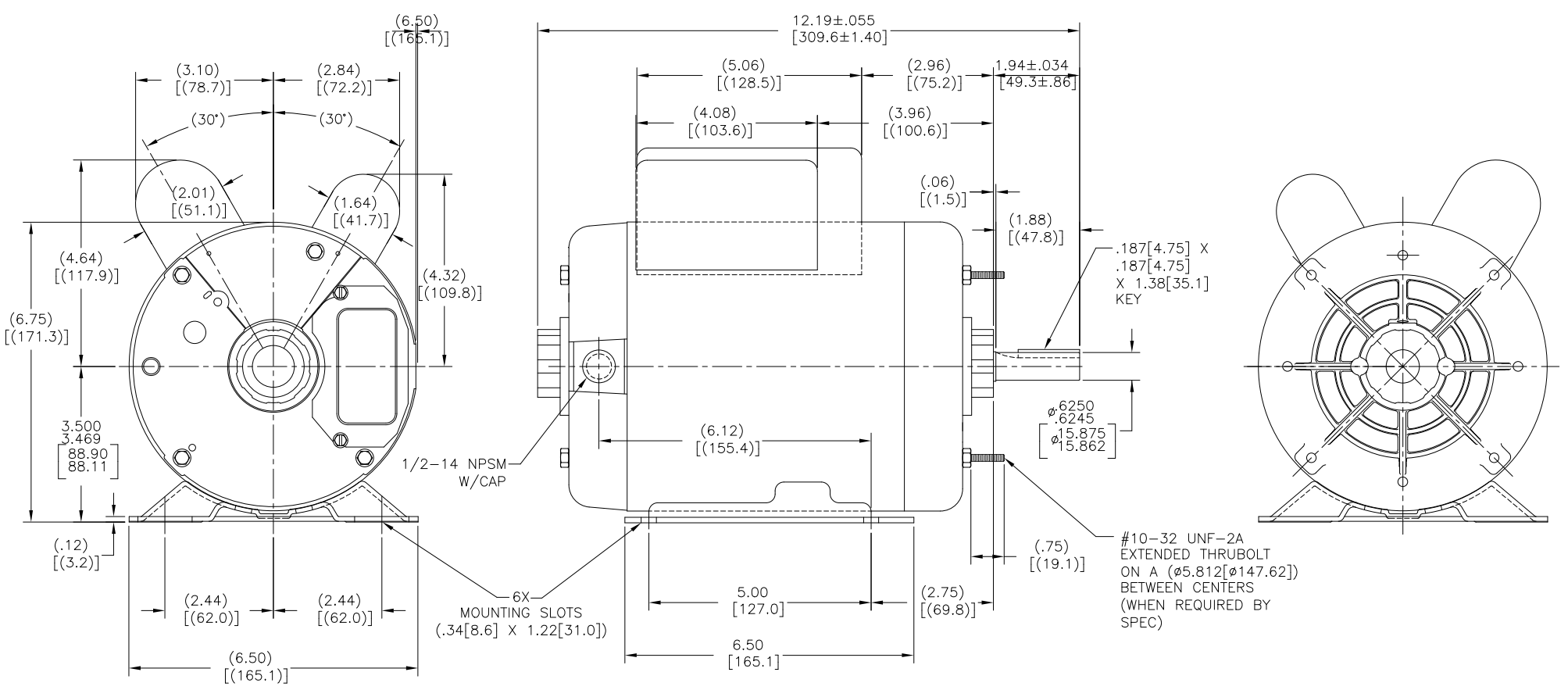
**Nameplate Specifications**

Phase	1	Output HP	1.0 Hp
Output KW	0.75 kW	Voltage	230/115 V
Speed	1725/1425 rpm	Service Factor	1.4
Frame	L56None	Enclosure	Totally Enclosed Non Ventilated
Thermal Protection	Thermally Protected	Ambient Temperature	40 °C
Frequency	60/50 Hz	Current	4.3/8.6/5.2/10.4 A
Duty	Continuous	Insulation Class	B
UL	Recognized	CSA	Y
CE	N	Number of Speeds	1

**Technical Specifications**

Electrical Type	Capacitor Start, Capacitor Run, Low Starting Torque, Single Or Dual Voltage	Starting Method	Across The Line
Poles	4	Rotation	Reversible Clockwise
Mounting	Removable Base	Drive End Bearing	Ball
Opp Drive End Bearing	Ball	Frame Material	Rolled Steel
Shaft Type	Keyed	Overall Length	12.19 in
Frame Length	6.25 in	Shaft Diameter	0.625 in
Shaft Extension	1.94 in		
Connection Drawing	17050301.PCX	Outline Drawing	C782RB-S01

This is an uncontrolled document once printed or downloaded and is subject to change without notice. Date Created:06/18/2025



**CAUTION:**  
 BASE TO BE ATTACHED WITH  
 SCREWS. DO NOT WELD.  
 TORQUE TO 30 IN/LBS.

**NOTE:**  
 MOTOR TO BE PACKED AND SHIPPED  
 WITH BAG ASSEMBLY 1010380-001  
 TAPED TO SIDE OF MOTOR.

DRAWING REVISION C	REVISION BY A. ARREOLA	DATE 03-24-2023	TOLERANCES UNLESS OTHERWISE SPECIFIED	DRAWN BY: R. RASCON		
ECO ECR-0224635	APPROVED BY	DATE	DIG. INCH mm ANGLE .X ±0.1 [±2.5] ±0.5° .XX ±0.02 [±0.51] .XXX ±0.005 [±0.127] XXXX ±0.0005 [±0.0127]	DATE: 09-22-2010		
ECO DESCRIPTION SEE ECR	<small>                 COPYRIGHT REGAL BELOIT AMERICA, INC. ALL RIGHTS RESERVED.                  PROPRIETARY AND CONFIDENTIAL INFORMATION - THIS DOCUMENT IS THE PROPERTY OF                  REGAL BELOIT AMERICA, INC. (OWNER) AND COMPANY OWNER'S PROPRIETARY                  INFORMATION. ANY REPRODUCTION OR OTHER FIRM RECEIVING IT IS DENIED.                  BY RECEIVING IT, TO AGREE THAT IT, AND/OR ANY PART OF IT, SHALL NOT BE DISCLOSED                  TO ANY PERSON, CORPORATION OR OTHER ENTITY, DUPLICATED, AND/OR USED, EXCEPT                  AS EXPRESSLY APPROVED IN WRITING IN ADVANCE BY OWNER. THIS DOCUMENT SHALL                  BE RETURNED TO OWNER UPON REQUEST. IT MAY BE SUBJECT TO CERTAIN                  RESTRICTIONS UNDER APPLICABLE EXPORT CONTROL LAWS AND REGULATIONS.             </small>		REMOVE BURRS & BREAK SHARP EDGES .003/.015 [0.076/.381] X 45° CORNER FILLETS R.02 [1.51] MACHINED SURFACES .125/ mm 32/ INCH mm	APPROVED BY: L. GRADO	DESCRIPTION OUTLINE	
				DATE: 09-22-2010	MATERIAL	PROCESS/FINISH
				REFERENCE	SIZE DWG NO C 782RB	SHEET 1