

# PRODUCT INFORMATION PACKET



Model No: C826V1

Catalog No: C826V1

General Purpose Motor, .5 HP, 1 Ph, 60 Hz, 115/208-230 V, 1800 RPM, 56C Frame, TEFC



Regal and Century are trademarks of Regal Rexnord Corporation or one of its affiliated companies.

©2023 Regal Rexnord Corporation, All Rights Reserved. MC017097E





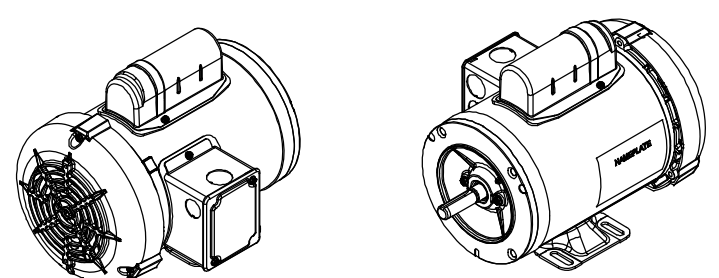
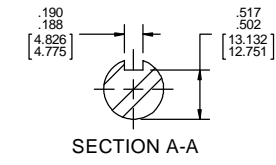
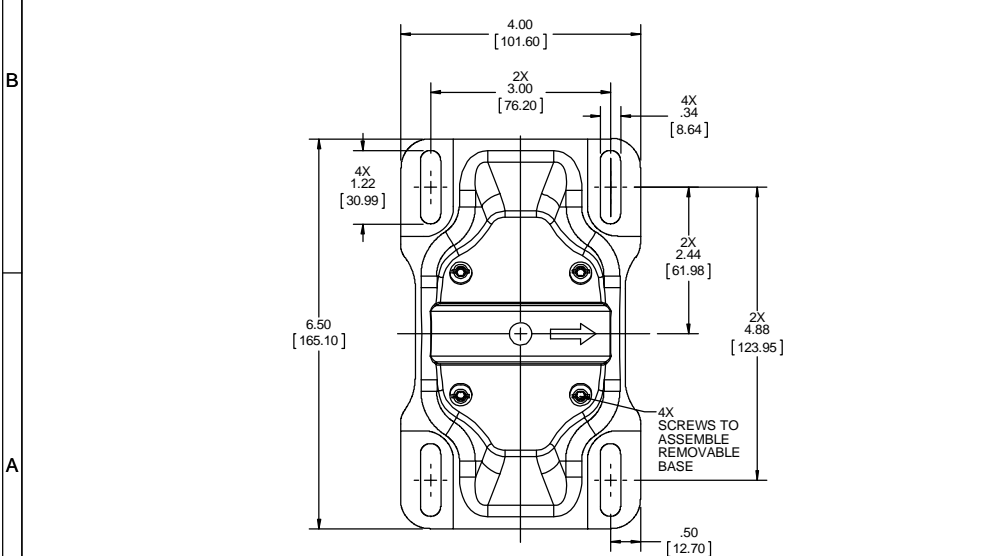
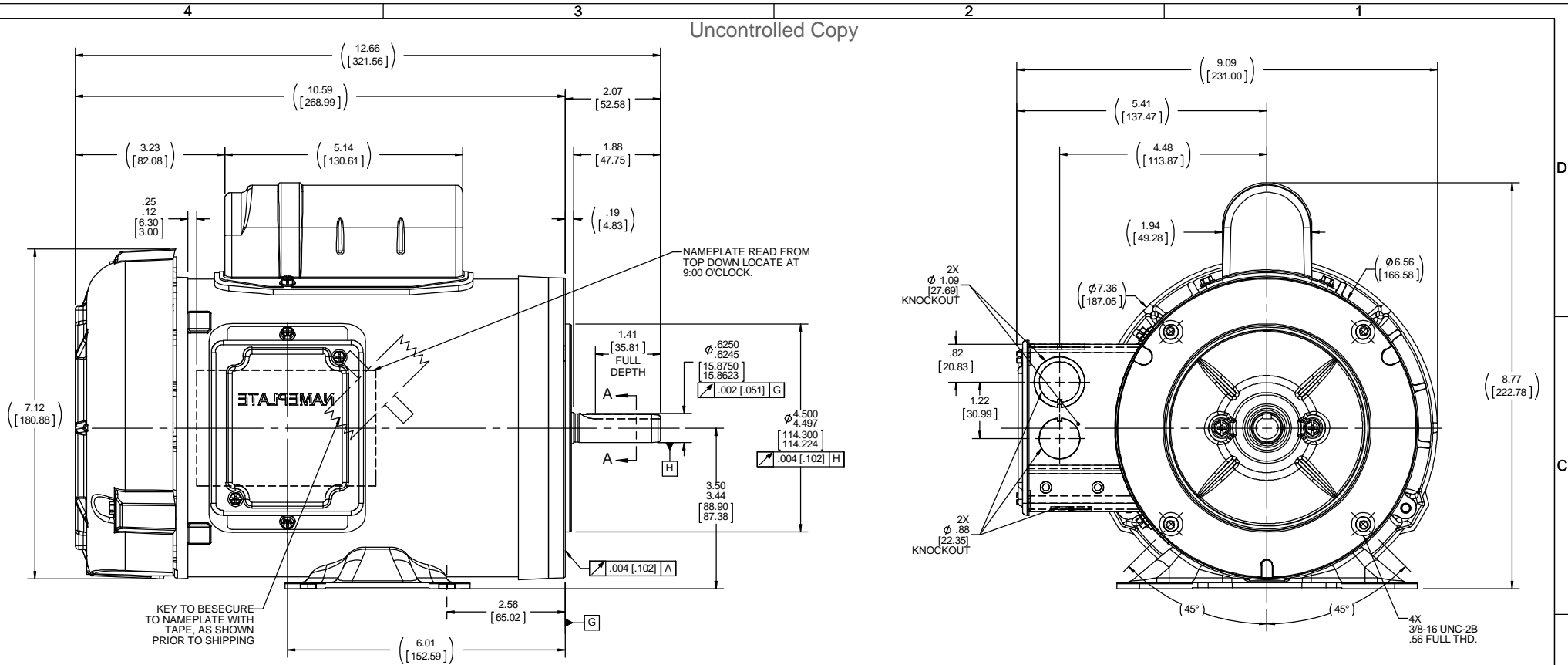
**Nameplate Specifications**

Output HP	.5 Hp	Output KW	0.37 kW
Frequency	60 Hz	Voltage	115/208-230 V
Current	7/3.5-3.5 A	Speed	1725 rpm
Service Factor	1.15	Phase	1
Efficiency	72 %	Duty	Continuous
Insulation Class	B	Frame	56C
Enclosure	Totally Enclosed Fan Cooled	Thermal Protection	No Protection
Ambient Temperature	40 °C	UL	Recognized
CSA	Y	CE	Y
Number of Speeds	1		

**Technical Specifications**

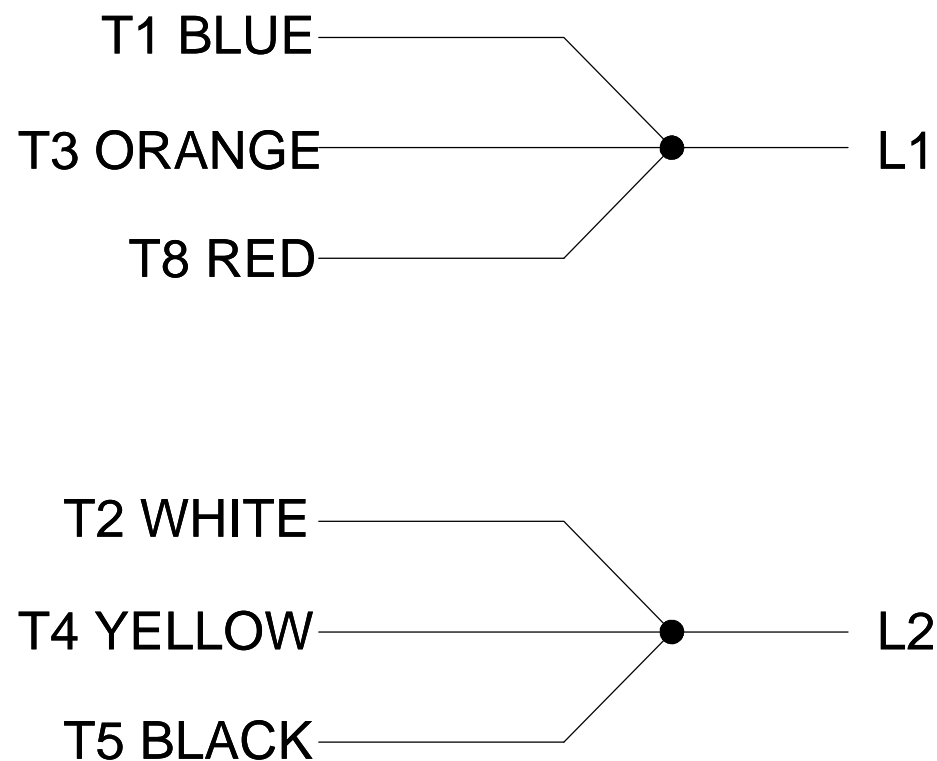
Electrical Type	Capacitor Start Induction Run	Starting Method	Across The Line
Poles	4	Rotation	Selective Counterclockwise
Mounting	Rigid Base	Drive End Bearing	Ball
Opp Drive End Bearing	Ball	Frame Material	Rolled Steel
Shaft Type	NEMA 56	Overall Length	12.66 in
Frame Length	7.15 in	Shaft Diameter	0.625 in
Shaft Extension	2.07 in		
Connection Drawing	DD10029-002	Outline Drawing	OL56100325-001

This is an uncontrolled document once printed or downloaded and is subject to change without notice. Date Created:03/15/2023

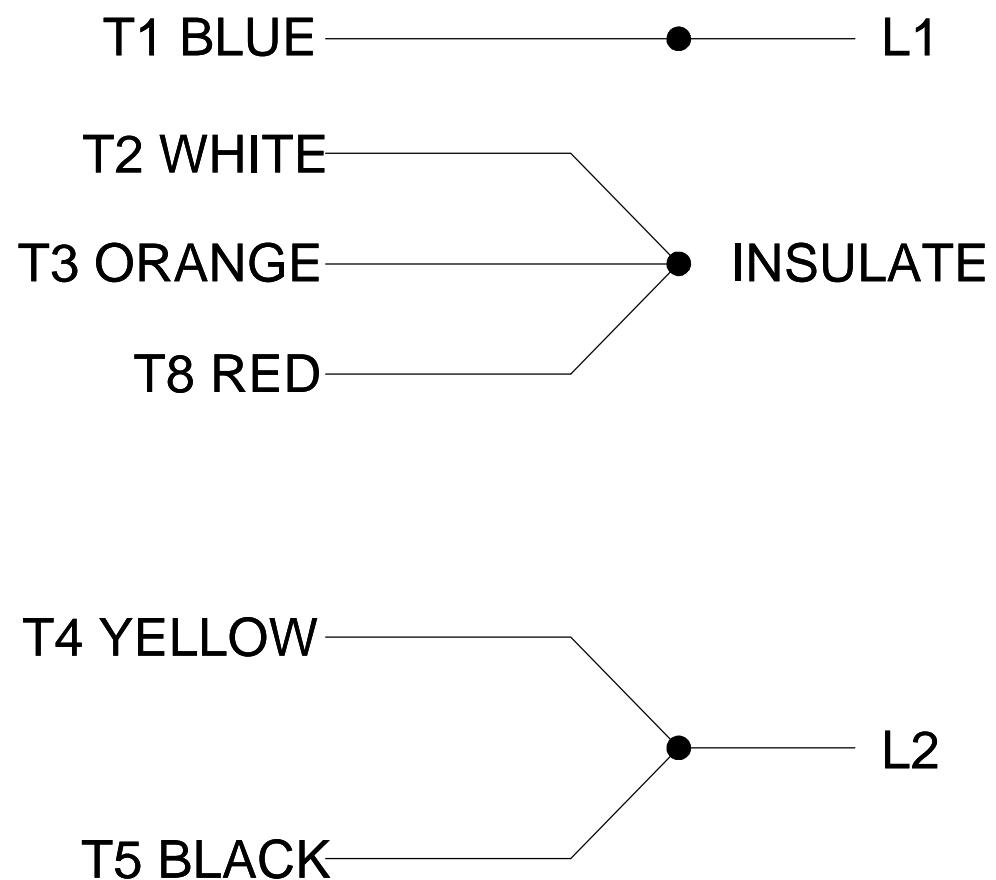


DRAWING REVISION A		REVISION BY	DATE	TOLERANCES UNLESS OTHERWISE SPECIFIED:		DRAWN BY AS		Regal Beloit America, Inc.
ECO-0141959		APPROVED BY	DATE	DEC.	INCH	mm	ANGLE	
ECO DESCRIPTION		NEW DRAWING		.X	±0.1	[±2.5]	±0.5°	APPROVED BY PVR
COPYRIGHT REGAL BELOIT AMERICA, INC. ALL RIGHTS RESERVED. PROPRIETARY AND CONFIDENTIAL INFORMATION. THIS DOCUMENT IS THE PROPERTY OF REGAL BELOIT AMERICA, INC. FORMERLY AND CONTAINING OWNERS PROPRIETARY INFORMATION. ANY PERSON, CORPORATION OR OTHER FIRM RECEIVING IT IS DEEMED BY RECEIVING IT, TO AGREE THAT IT, AND/OR ANY PART OF IT, SHALL NOT BE DISCLOSED TO ANY PERSON, CORPORATION OR OTHER ENTITY, DUPLICATED, AND/OR USED, EXCEPT AS EXPRESSLY APPROVED IN WRITING IN ADVANCE BY OWNER. THIS DOCUMENT SHALL BE RETURNED TO OWNER UPON REQUEST. IT MAY BE SUBJECT TO CERTAIN RESTRICTIONS UNDER APPLICABLE EXPORT CONTROL LAWS AND REGULATIONS.				.XXX		±0.005	[±0.127]	DATE 04/03/2018
				.XXXX		±0.0005	[±0.0127]	REFERENCE OLME174738-001
				REMOVE BURRS & BREAK SHARP EDGES: .0031 [0.0787/381] X 45° CORNER FILLETS: 1. R.02 [51]		MACHINED SURFACES: 125 / 3.2 INCH / mmv		MATERIAL OLME174738-001
				mm SHOWN IN (BRACKETS)		THIRD ANGLE PROJECTION		SIZE C
						DRAWING NUMBER OL56100325-001		PROCESS/FINISH
								DESCRIPTION OUTLINE
								65FR, TEFC, C-FACE, 1-PHASE, RIGID-REMOVABLE
								SHEET 1 OF 1

### LOW VOLTAGE



### HIGH VOLTAGE



DD10029-002

## ROTATION CCW-LE TO REVERSE INTERCHANGE T8 RED AND T5 BLACK LEADS

PLATE: 41365

SLOT: 22

DRAWING REVISION A	REVISION BY MVG	DATE 11/22/2017	TOLERANCES UNLESS OTHERWISE SPECIFIED: DEC. INCH mm ANGLE .X ±0.1 [±2.5] ±0.5° .XX ±0.01 [±0.25] .XXX ±0.005 [±0.127] .XXXX ±0.0005 [±0.0127]	DRAWN BY MVG	<b>REGAL</b> ™ Regal Beloit America, Inc.
ECO ECO-0135261	APPROVED BY CD	DATE 11/22/2017		DATE 11/22/2017	
ECO DESCRIPTION NEW DRAWING			REMOVE BURRS & BREAK SHARP EDGES: .003/.015 [.076/.381] X 45° CORNER FILLETS: R.02 [.51] MACHINED SURFACES: 125 3.2 INCH mm	APPROVED BY CD	DESCRIPTION CONN DIAGRAM-NAMEPLATE
<small>COPYRIGHT REGAL BELOIT AMERICA, INC. ALL RIGHTS RESERVED. PROPRIETARY AND CONFIDENTIAL INFORMATION - THIS DOCUMENT IS THE PROPERTY OF REGAL BELOIT AMERICA, INC. ("OWNER") AND CONTAINS OWNER'S PROPRIETARY INFORMATION. ANY PERSON, CORPORATION OR OTHER FIRM RECEIVING IT IS DEEMED, BY RECEIVING IT, TO AGREE THAT IT, AND/OR ANY PART OF IT, SHALL NOT BE DISCLOSED TO ANY PERSON, CORPORATION OR OTHER ENTITY, DUPLICATED, AND/OR USED, EXCEPT AS EXPRESSLY APPROVED IN WRITING IN ADVANCE BY OWNER. THIS DOCUMENT SHALL BE RETURNED TO OWNER UPON REQUEST. IT MAY BE SUBJECT TO CERTAIN RESTRICTIONS UNDER APPLICABLE EXPORT CONTROL LAWS AND REGULATIONS.</small>			REFERENCE DD10029-001	MATERIAL	PROCESS/FINISH
			THIRD ANGLE PROJECTION	SIZE B	DRAWING NUMBER DD10029-002