

# PRODUCT INFORMATION PACKET



Model No: C842ES  
Catalog No: C842ES

General Purpose Motor, 1/2 HP, 1 Ph, 60 Hz, 115/230 V, 3600 RPM, 48 Frame, DP



Regal and Century are trademarks of Regal Rexnord Corporation or one of its affiliated companies.  
©2022 Regal Rexnord Corporation, All Rights Reserved. MC017097E





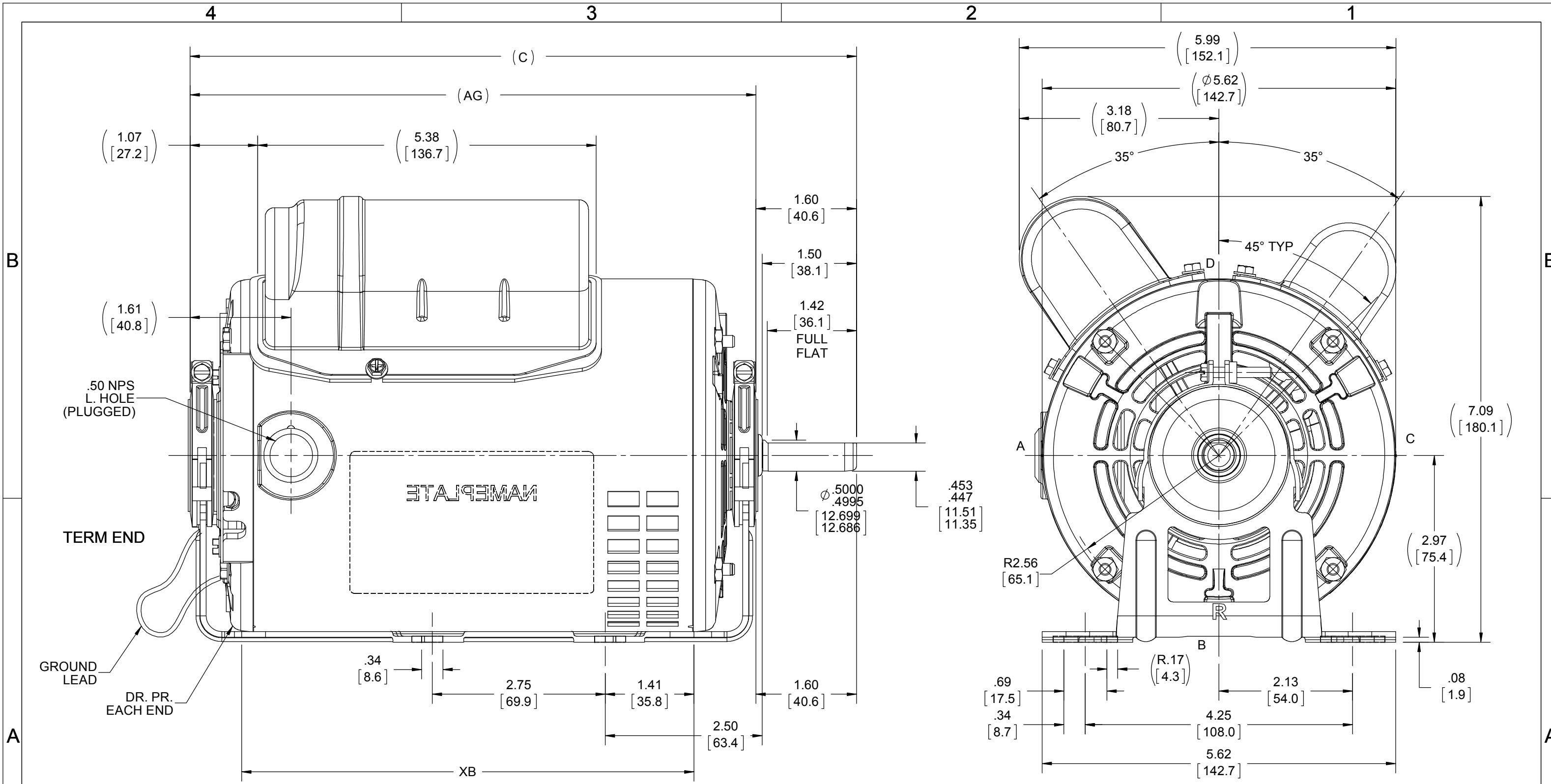
**Nameplate Specifications**

Output HP	1/2 Hp	Output KW	0.37 kW
Frequency	60 Hz	Voltage	115/230 V
Current	4.4/2.2 A	Speed	3450 rpm
Service Factor	1.25	Phase	1
Duty	Continuous	Insulation Class	B
Frame	48	Enclosure	Drip Proof
Thermal Protection	No Protection	Ambient Temperature	40 °C
UL	Recognized	CSA	N
CE	Y	Number of Speeds	1

**Technical Specifications**

Electrical Type	Capacitor Start Capacitor Run	Starting Method	Across The Line
Poles	2	Rotation	Reversible Counterclockwise
Mounting	Resilient Base	Drive End Bearing	Ball
Opp Drive End Bearing	Ball	Frame Material	Rolled Steel
Shaft Type	Flat	Overall Length	10.59 in
Frame Length	7.13 in	Shaft Diameter	0.500 in
Shaft Extension	1.59 in		
Connection Drawing	9513517	Outline Drawing	SS404133

This is an uncontrolled document once printed or downloaded and is subject to change without notice. Date Created:11/29/2022



DRAWING REVISION D	REVISION BY A SUPPANAVAR	REV DATE/© DATE 05/21/2019
ECO ECO-0172090	APPROVED BY	DATE

**OUTLINE CONVERSION PROJECT**

COPYRIGHT (PER REVISION DATE) REGAL BELOIT AMERICA, INC. ALL RIGHTS RESERVED. PROPRIETARY AND CONFIDENTIAL INFORMATION - THIS DOCUMENT IS THE PROPERTY OF REGAL BELOIT AMERICA, INC. ("OWNER") AND CONTAINS OWNER'S PROPRIETARY INFORMATION. ANY PERSON, CORPORATION OR OTHER FIRM RECEIVING IT IS DEEMED, BY RECEIVING IT, TO AGREE THAT IT, AND/OR ANY PART OF IT, SHALL NOT BE DISCLOSED TO ANY PERSON, CORPORATION OR OTHER ENTITY, DUPLICATED, AND/OR USED, EXCEPT AS EXPRESSLY APPROVED IN WRITING IN ADVANCE BY OWNER. THIS DOCUMENT SHALL BE RETURNED TO OWNER UPON REQUEST. IT MAY BE SUBJECT TO CERTAIN RESTRICTIONS UNDER APPLICABLE EXPORT CONTROL LAWS AND REGULATIONS.

**TOLERANCES (EXCEPT AS NOTED):**

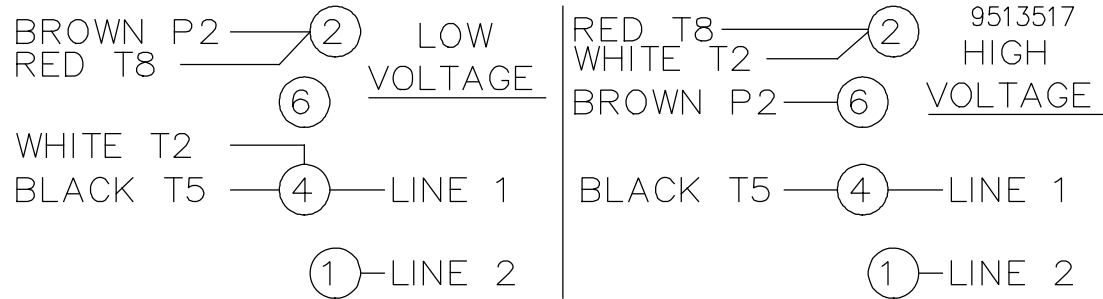
DEC.	INCH	mm	ANGLE
.X	±0.1	[±3]	±7° 30"
.XX	±0.03	[±0.8]	
.XXX	±0.005	[±0.13]	
.XXXX	±0.0005	[±0.013]	

REMOVE BURRS & BREAK SHARP EDGES: .003/.015 [.08/.38] X 45°  
 CORNER FILLETS: R.02 [.5]  
 MACHINED SURFACES: 200/INCH 5.1/mm  
 mm DIMENSIONS IN [BRACKETS] ARE FOR REFERENCE ONLY


DRAWN BY PVR	DATE 12/24/14
APPROVED BY	DATE
REFERENCE SS403898	THIRD ANGLE PROJECTION

<b>REGAL</b> Regal Beloit America, Inc.	
DESCRIPTION <b>OUTLINE</b>	
MATERIAL	PROCESS/FINISH
SIZE B	DRAWING NUMBER SS404133
SHEET 1 OF 1	

DASH	C	AG	XB
675	10.34 [262.6]	8.75 [222.2]	6.94 [176.3]
700	10.59 [268.9]	9.00 [228.6]	7.19 [182.6]



ROTATION CCW-OPE TO REVERSE EITHER VOLTAGE  
 INTERCHANGE BLACK(T5) WITH RED(T8) LEADS

				TOLERANCES UNLESS SPECIFIED			DRAWN TOM 06-21-1988						
				DEC.	INCHES		CHK	GK 06-21-1988					
				.X	±.1		APPD	FG 06-21-1988					
3	ADDED T MARKINGS	DS 07/19/2018	VC	.XX	±.02	TITLE CONNECTION DIAGRAM	SCALE	1=1					
2	REDRAWN IN AUTOCAD	TAT 10-22-2004	ML	.XXX	±.005		REF						
1	NEW DRAWING	TOM 06-24-1988		.XXXX	±.0005		MAT'L.	FMF					
NO.	REVISION	BY & DATE	CHK	ANG	±7'30"	FINISH	PREV						
THIS DRAWING IN DESIGN AND DETAIL IS OUR PROPERTY AND MUST NOT BE USED EXCEPT IN CONNECTION WITH OUR WORK ALL RIGHTS OF DESIGN AND INVENTION ARE RESERVED THIS IS AN ELECTRONICALLY GENERATED DOCUMENT - DO NOT SCALE THIS PRINT						RFP	CAD FILE	9513517	SIZE	DRAWING NO.	PAGE	OF	REV.
						DIST			A	9513517			3