

PRODUCT INFORMATION PACKET



Model No: CB2054AD
Catalog No: CB2054AD

Carbonator Pump Motor, 1/2 HP, 1 Ph, 60/50 Hz, 115/230 V, 1800 RPM, 48 Frame, OPEN



Regal and Century are trademarks of Regal Rexnord Corporation or one of its affiliated companies.
©2025 Regal Rexnord Corporation, All Rights Reserved. MC017097E





Nameplate Specifications

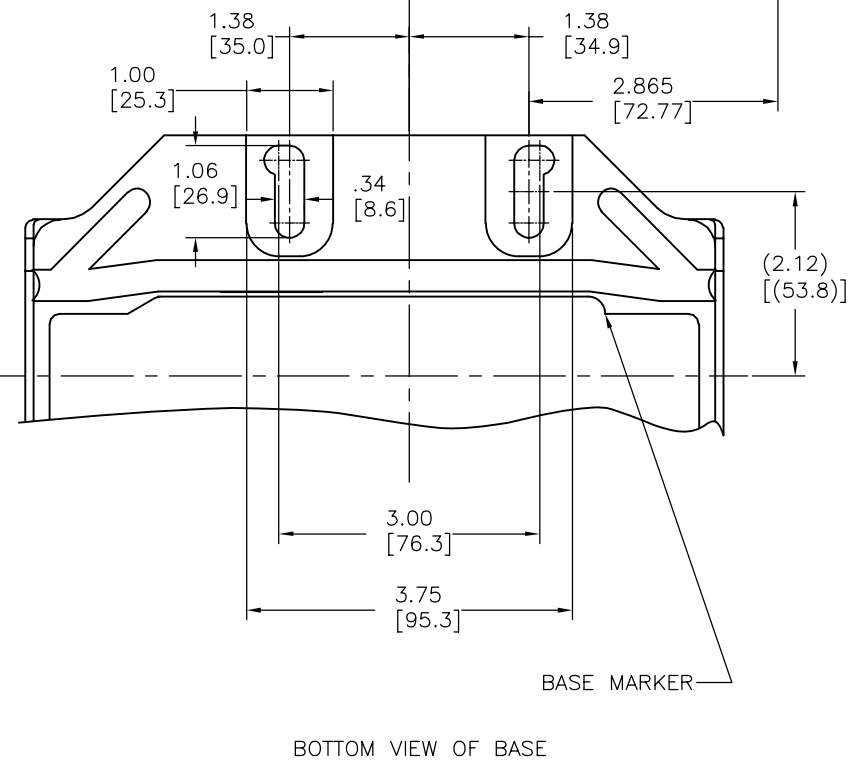
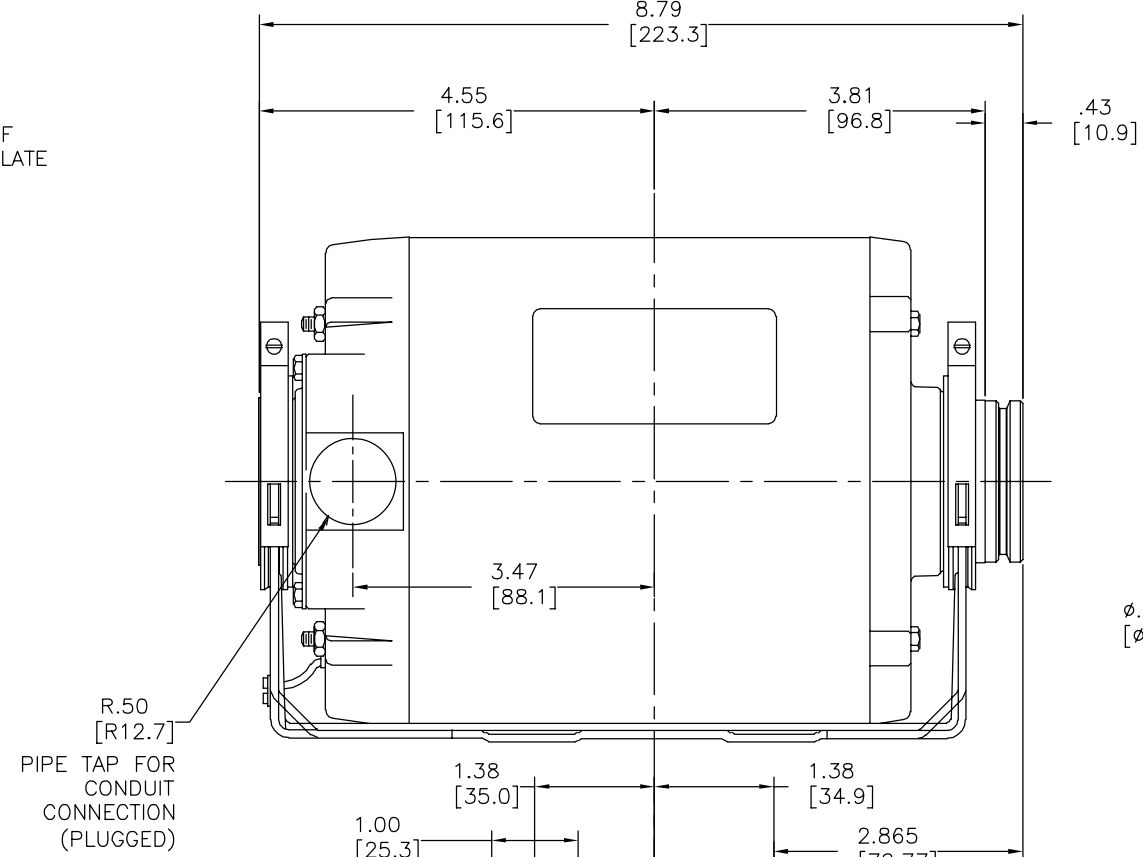
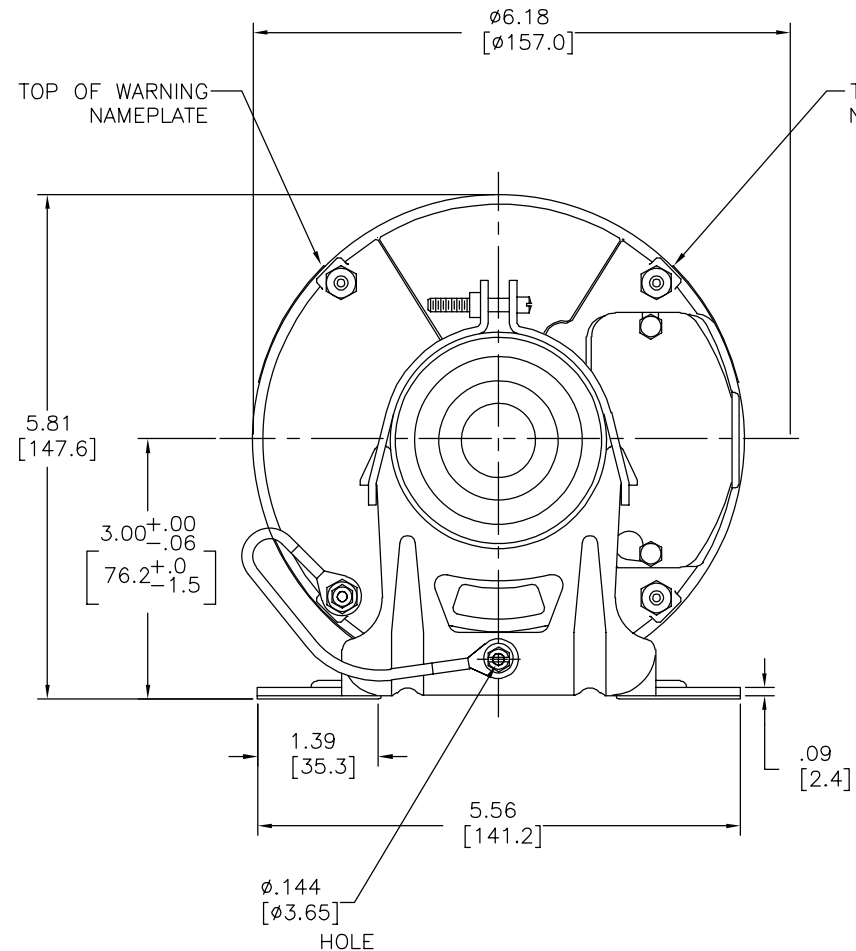
Phase	1	Output HP	1/2 Hp
Output KW	0.37 kW	Voltage	115/230 V
Speed	1725/1425 rpm	Service Factor	1.0
Frame	48	Enclosure	Open Enclosed
Thermal Protection	Automatic	Ambient Temperature	40 °C
Frequency	60/50 Hz	Current	6.8/3.4 A
Duty	Continuous	Insulation Class	B
UL	Recognized	CSA	Y
CE	N	Number of Speeds	1

Technical Specifications

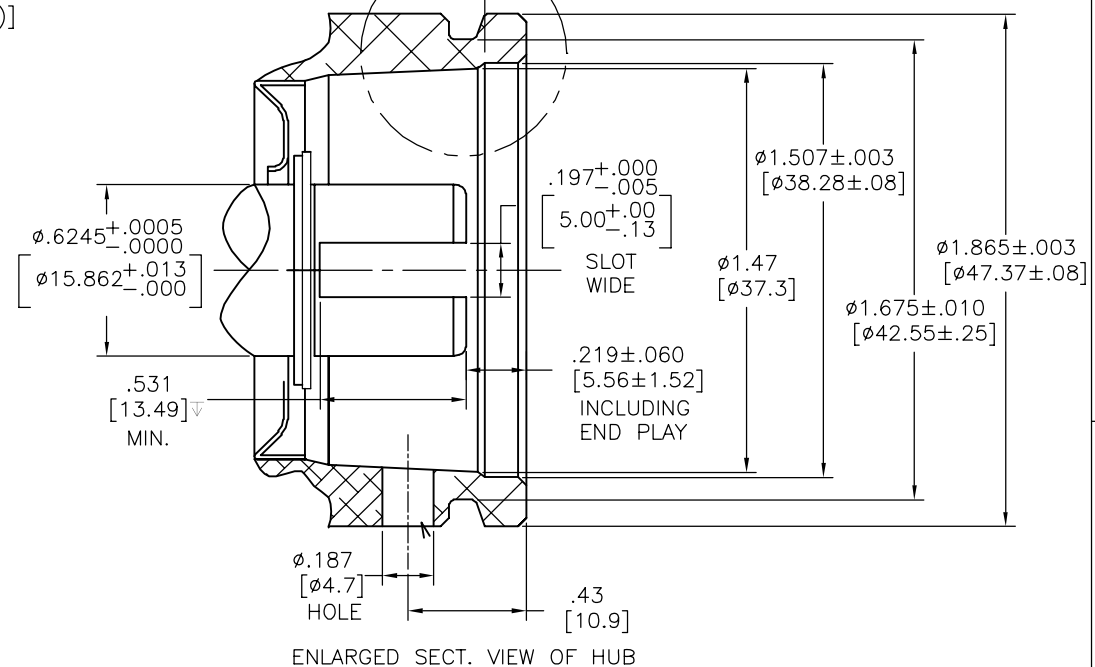
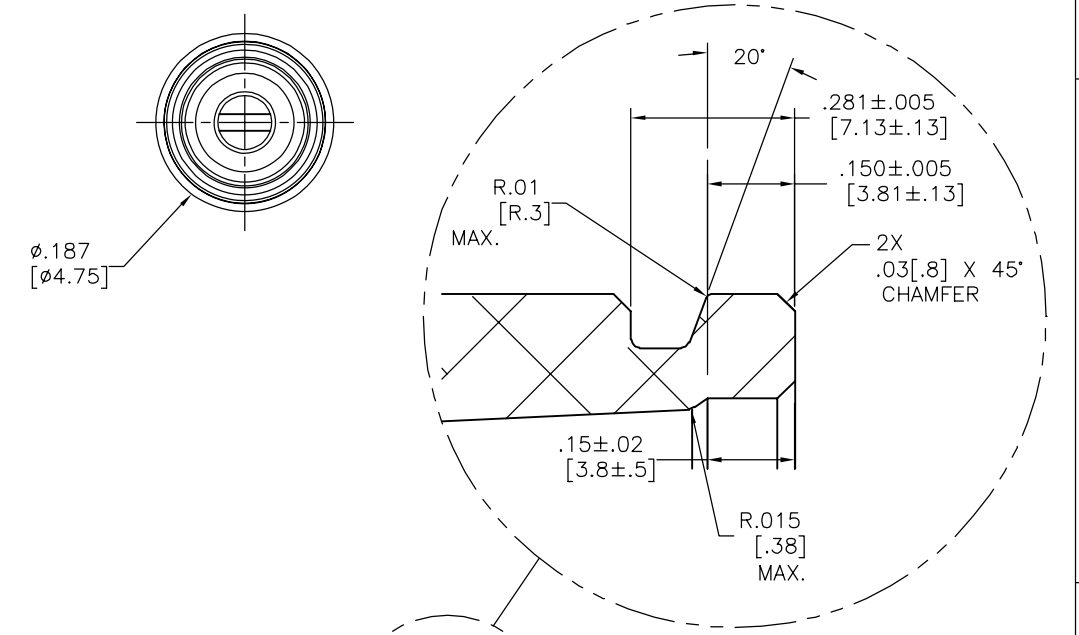
Electrical Type	Split Phase	Starting Method	Across The Line
Poles	4	Rotation	Reversible
Mounting	Resilient Base	Drive End Bearing	Sleeve
Opp Drive End Bearing	Sleeve	Frame Material	Rolled Steel
Shaft Type	Slot	Overall Length	8.79 in
Frame Length	5.44 in	Shaft Diameter	0.625 in
Shaft Extension	0.28 in		
Connection Drawing	621804-001A	Outline Drawing	11994-003

This is an uncontrolled document once printed or downloaded and is subject to change without notice. Date Created:06/18/2025

REV	ECO	REV BY	DATE	APPD	DATE
D	0025113	G. RODRIGUEZ	03-29-2012	DANIEL MUÑOZ	03-29-2012



SHAFT CONCENTRIC WITH $\phi 1.507[\phi 38.28]$ WITHIN $.003[.08]$ T.I.R. AND PERPENDICULAR WITH HUB FACE WITHIN $.003[.08]$ T.I.R.

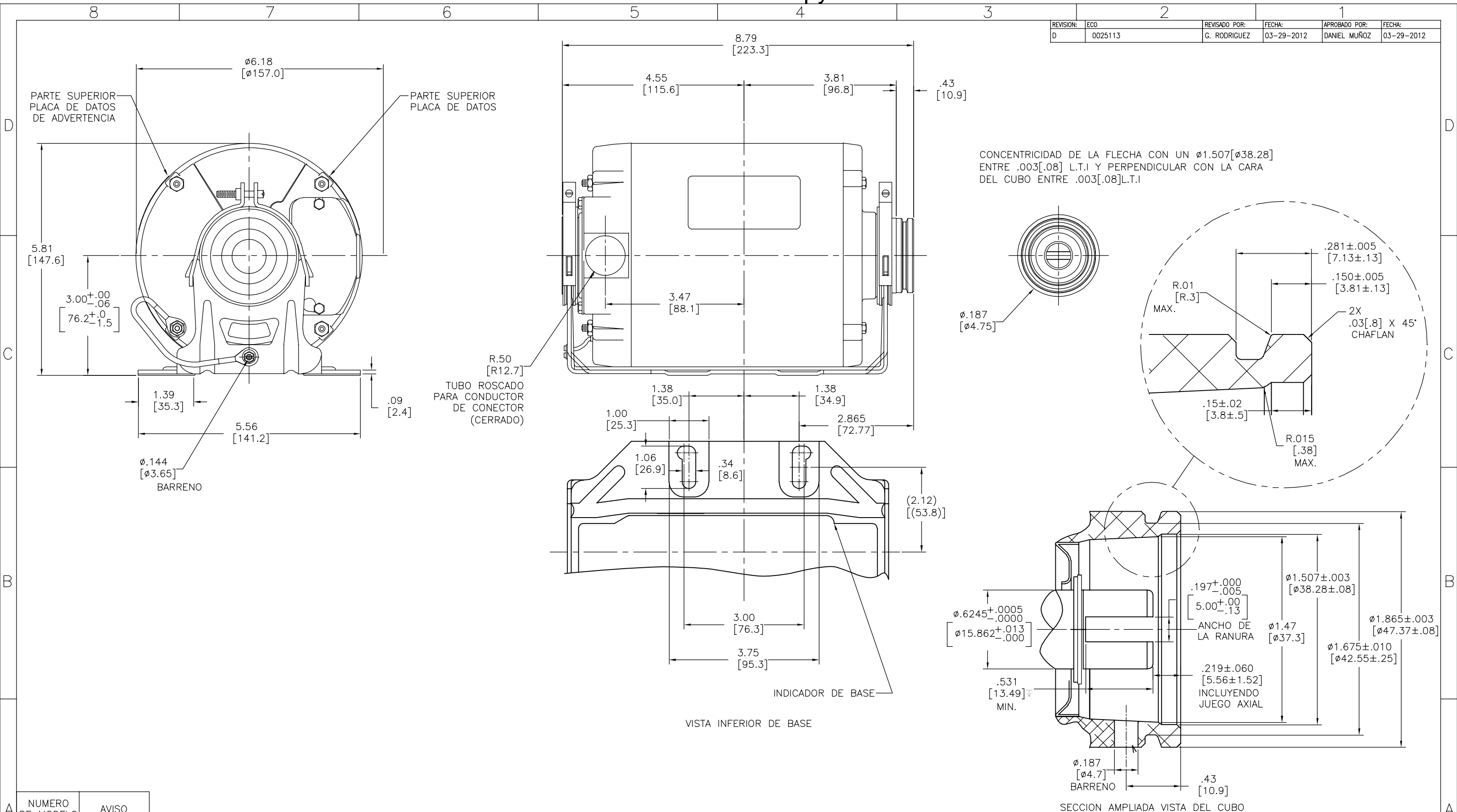


MODEL NO.	NOTICE
CB2054AD	96GR0196
S48A64A01	96GR0196
10845	96GR0196
S48A64C28	97PN0341

GEOMETRIC CHARACTERISTICS & SYMBOLS ▽ FLATNESS - STRAIGHTNESS ⊥ PERPENDICULARITY (SQUARENESS) // PARALLELISM ○ ROUNDNESS (CIRCULARITY) Ⓜ CYLINDRICITY ≡ PROFILE OF ANY SURFACE ≡ PROFILE OF ANY LINE ↗ RUNOUT ⊕ TRUE POSITION ⊙ CONCENTRICITY = SYMMETRY	UNLESS OTHERWISE SPECIFIED DIM. TOLERANCES ARE AS FOLLOWS: INCH ±.1 ±.02 ±.005 ±.0005 mm ±0.5 ±0.13 ±0.013 ANG. ±.50 DEG REMOVE BURRS & BREAK SHARP EDGES: INCH .003-.015 mm 0.1-0.4 CORNER FILLETS TO: INCH .020 mm 0.5 MACHINE SURFACES: INCH 125 mm 3.2	DR BY: SHANKS	09-12-1996	REGAL-BELOIT CORPORATION DESCRIPTION: OUTLINE SIZE: D DWG NO: 11994-003 SCALE: NONE SHEET: 1	
		APPD: JRC	09-12-1996		EDS DATE: 11-11-2011
		THIRD ANGLE PROJECTION	FORMAT: REV G		

CONFIDENTIAL: THIS DRAWING AND ITS INFORMATION ARE THE EXCLUSIVE AND CONFIDENTIAL PROPERTY OF REGAL-BELOIT CORPORATION AND ARE NOT TO BE DISCLOSED, DUPLICATED, DISTRIBUTED OR OTHERWISE USED WITHOUT THE WRITTEN CONSENT OF REGAL-BELOIT CORPORATION. -ALL RIGHTS RESERVED.

REVISION: ECO	REVISADO POR: G. RODRIGUEZ	FECHA: 03-29-2012	APROBADO POR: DANIEL MUÑOZ	FECHA: 03-29-2012
D	0025113			

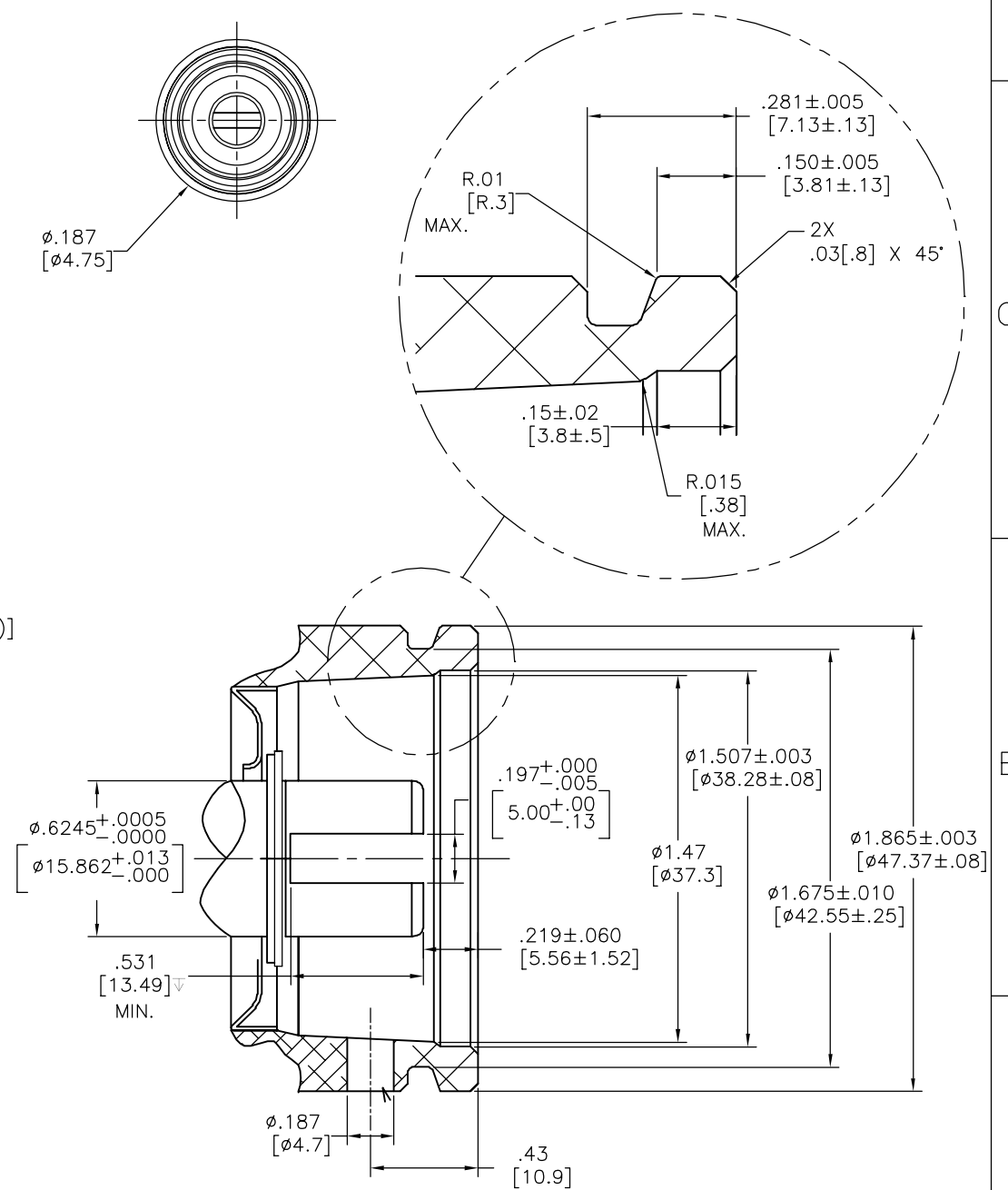
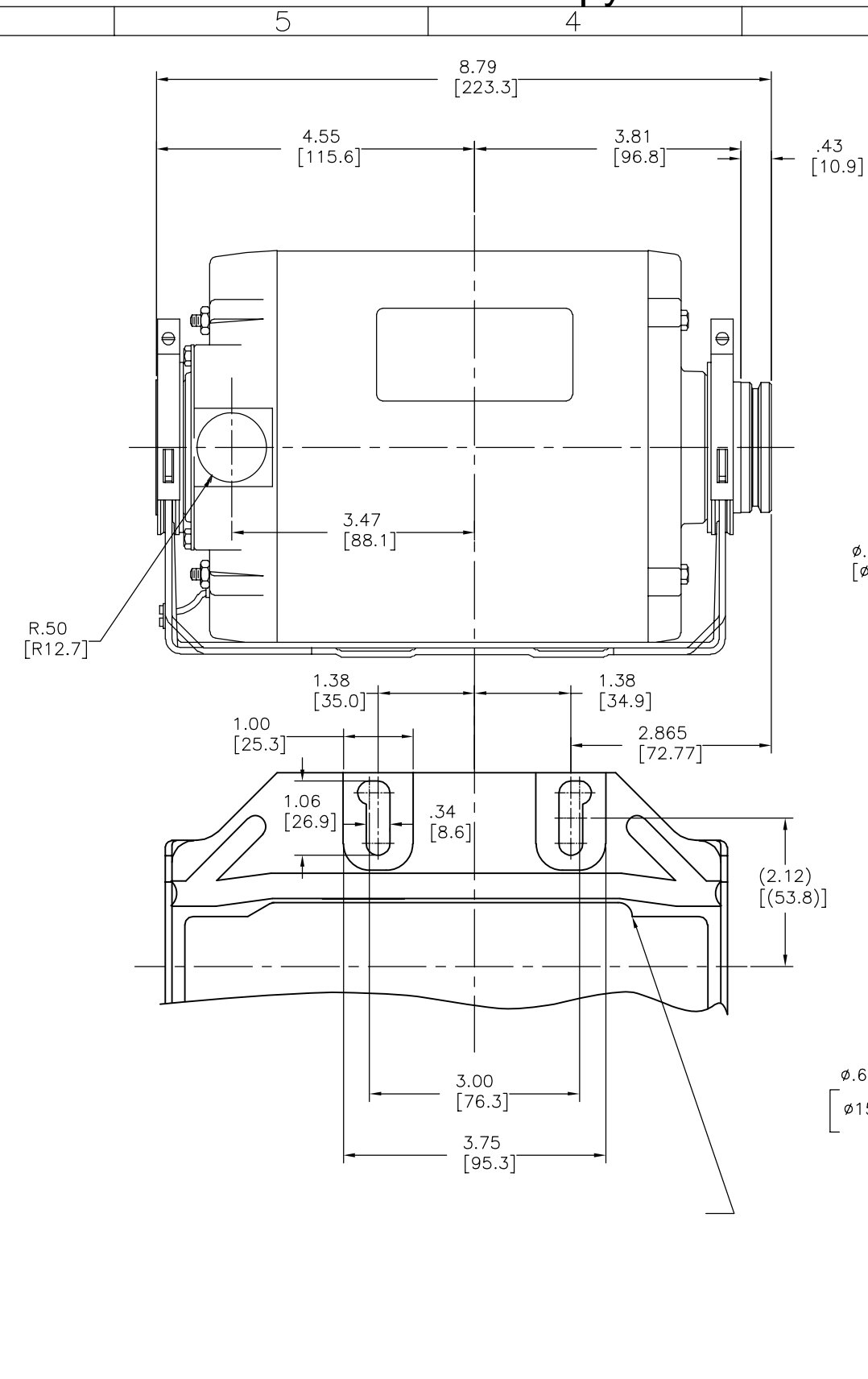
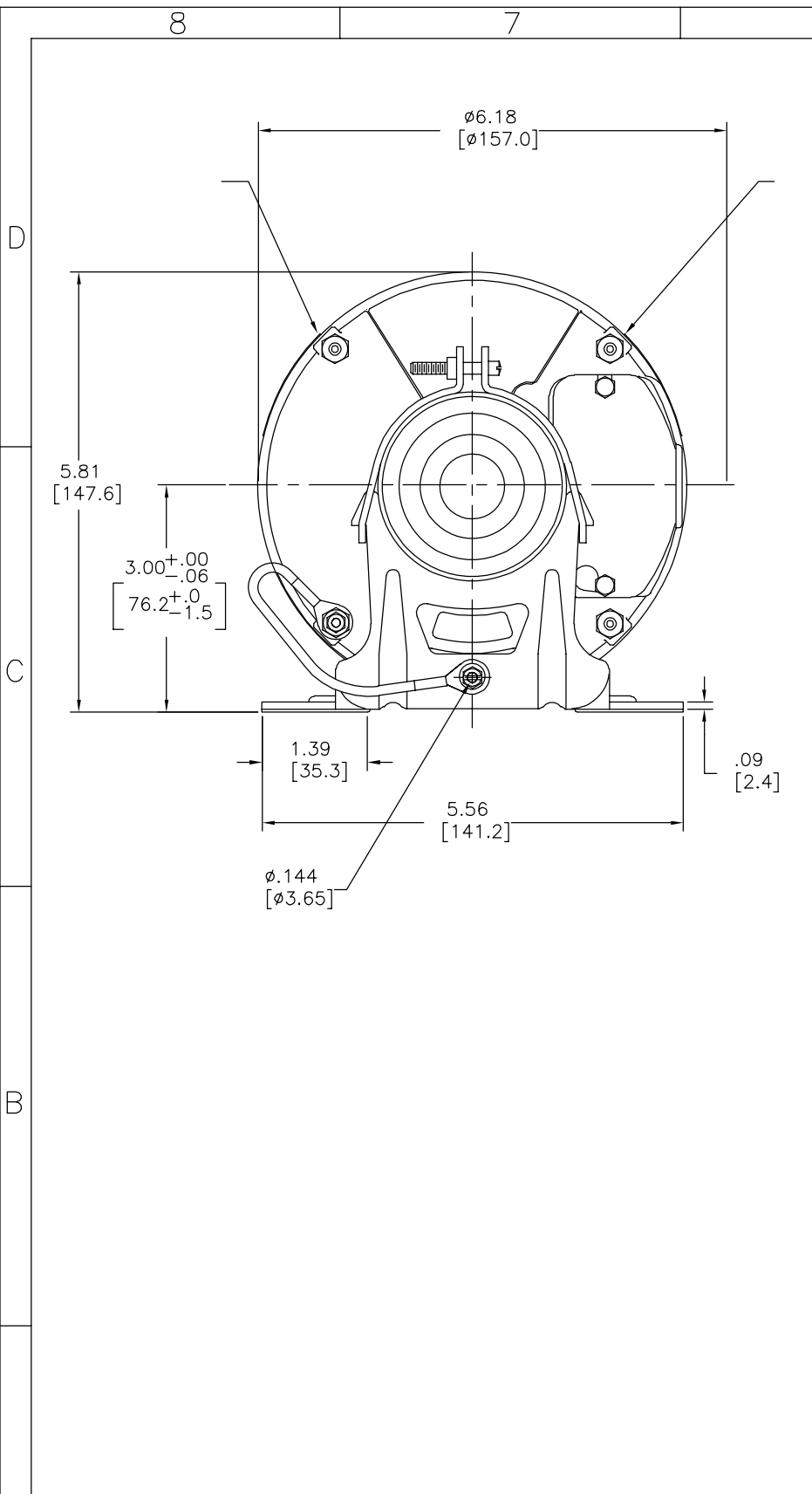


CONCENTRICIDAD DE LA FLECHA CON UN $\phi 1.507$ [38.28] ENTRE .003 [.08] L.T.I Y PERPENDICULAR CON LA CARA DEL CUBO ENTRE .003 [.08] L.T.I

NUMERO DE MODELO	AVISO
CB2054AD	96GR0196
S48A64A01	96GR0196
10845	96GR0196
S48A64C28	97PN0341

CARACTERISTICAS DE GEOMETRIA Y SIMBOLOS: ▽ PLANICIDAD — RECTITUD ∠ ANGULARIDAD ⊥ PERPENDICULARIDAD (A ESCUADRA) // PARALELISMO ○ REDONDEZ (CIRCULARIDAD) R CILINDRICIDAD ≡ PERFIL DE CUALQUIER SUPERFICIE ∟ PERFIL DE CUALQUIER LINEA ∠ VARIACION ⊕ POSICION REAL ⊙ CONCENTRICIDAD = SIMETRIA	A MENOS QUE SE ESPECIFIQUE DE OTRA MANERA, LAS TOLERANCIAS DE LAS DIMS, SON LAS SIGUIENTES: PULG X XX XXX XXXX mm ±0.5 ±0.13 ±0.013 ANG. ±50 GRADOS ELIMINAR REBABAS Y ORILLAS FILOSAS DEL BORDE. PULG .003-.015 mm 0.1-0.4 FILETEAR ESQUINA: PULG .020 mm 0.5 MAQUINAR SUPERFICIES PULG 125 mm 3.2	DIBUJADO POR: SHANKS	09-12-1996	DESCRIPCION: OUTLINE
		APROBADO POR: JRC	09-12-1996	
TERCER ANGULO DE PROYECCION		REV. FORMATO: G		NUMERO DE DIBUJO: 11994-003
CONFIDENCIAL: ESTE DIBUJO Y SU INFORMACION SON PROPIEDAD DE USO EXCLUSIVO Y CONFIDENCIAL DE REGAL-BELOIT CORPORATION, Y NO DEBERAN SER REVELADOS, DUPLICADOS, DISTRIBUIDOS O USARSE DE OTRA MANERA SIN EL CONSENTIMIENTO ESCRITO DE REGAL-BELOIT CORPORATION. -TODOS LOS DERECHOS RESERVADOS.				ESCALA: NONE
ASME Y14.5M 1994 DIMS METRICAS MOSTRADAS [PARENTESIS]				HOJA: 1

版本	ECO	编制	日期	批准	日期
D	0025113	G. RODRIGUEZ	03-29-2012	DANIEL MUÑOZ	03-29-2012



CB2054AD	96GR0196
S48A64A01	96GR0196
10845	96GR0196
S48A64C28	97PN0341

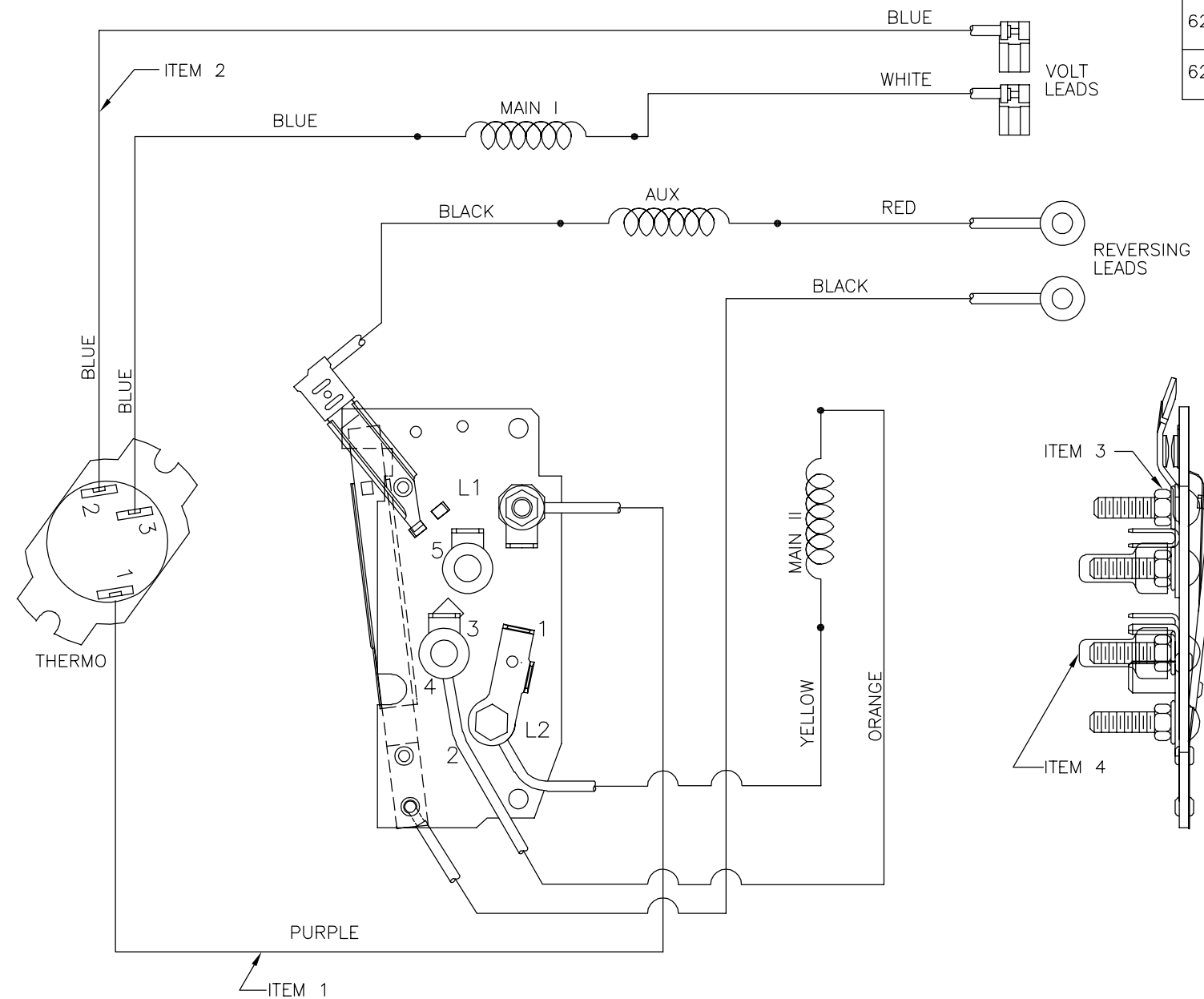
形位公差 尺寸公差如下: 英寸 X XX XXX XXXX 毫米 ±.1 ±.02 ±.005 ±.0005 角度 ±.5 度 ±.013 ±.013 清理毛刺和尖棱 英寸 .003-.015 毫米 0.1-0.4 内圆角 英寸 .020 毫米 0.5 表面粗糙度 英制 125 米制 3.2	除另有注明 尺寸公差如下: 英寸 X XX XXX XXXX 毫米 ±.1 ±.02 ±.005 ±.0005 角度 ±.5 度 ±.013 ±.013 清理毛刺和尖棱 英寸 .003-.015 毫米 0.1-0.4 内圆角 英寸 .020 毫米 0.5 表面粗糙度 英制 125 米制 3.2
--	---

绘图:	SHANKS	09-12-1996
批准:	JRC	09-12-1996
第三角投影		图底格式发布日期 11-11-2011 图底格式版本 G
机密: 本图纸及相关信息所有版权归REGAL-BELOIT CORPORATION 未经REGAL-BELOIT CORPORATION书面授权, 不得泄露、 复制、传播或作其他用途。一版权所有		

		名称	OUTLINE
图幅	D	图号	11994-003
比例	NONE	页号	1

REV	ECO	REV BY	DATE	APPD	DATE
F	0007188	Lara Grado	06-22-2009	C. Contreras	06-22-2009

PART NO.	ROT	CONNECTION	VOLT	CONNECTION	NOTICE
621804-001A	CCW	BLACK → 2 RED → 4	115	WHITE → 1 BLUE → 3	92GR 0658
621804-001B	CW	RED → 2 BLACK → 4	115	WHITE → 1 BLUE → 3	---
621804-001C	CCW	BLACK → 2 RED → 4	230	BLUE → 5 WHITE → 3	94GR 0364
621804-001D	CW	RED → 2 BLACK → 4	230	BLUE → 5 WHITE → 3	---



NOTES:

- CONNECT REVERSING & VOLTAGE LEADS PER DASH CONDITION SPECIFIED ON BOM FOR MODEL, TO TERMINALS MARKED WITH ARROWS USING CHART ABOVE.
- LEAD & TERM. ASSY. PER PS-595
- LEAD LOCATION SHOULD BE ESSENTIALLY AS SHOWN

PARTS LIST

ITEM	REQ	DESCRIPTION	PART NUMBER
1	1	LEAD	091P18-U6-065-KD
2	1	LEAD	091BL18-U6-070-HB
3	4	NUT, HEX-#8	368C210H05
4	2	TERMINAL-INSULATOR	167A168H01

DRFT. REF: 369C382H03 TERM. BOARD

GEOMETRIC CHARACTERISTICS & SYMBOLS

- ▭ FLATNESS
- STRAIGHTNESS
- ∠ ANGULARITY
- ⊥ PERPENDICULARITY (SQUARENESS)
- // PARALLELISM
- ROUNDNESS (CIRCULARITY)
- ⊘ CYLINDRICITY
- △ PROFILE OF ANY SURFACE
- ∩ PROFILE OF ANY LINE
- ↗ RUNOUT
- ⊕ TRUE POSITION
- ◎ CONCENTRICITY
- ≡ SYMMETRY

UNLESS OTHERWISE SPECIFIED DIM. TOLERANCES ARE AS FOLLOWS:

INCH X XX XXX XXXX
 ±.1 ±.02 ±.005 ±.0005
 mm ±0.5 ±0.13 ±0.013

ANG. ±.50 DEG
 REMOVE BURRS & BREAK SHARP EDGES:
 INCH .003-.015 mm 0.1-0.4

CORNER FILLETS TO:
 INCH .020 mm 0.5

MACHINE SURFACES:
 INCH 125 mm 3.2

METRIC DIMS. SHOWN IN [BRACKETS]

DR BY: SFW 02-12-2007

APPD:

THIRD ANGLE PROJECTION

EDS DATE 02-22-2008
 FORMAT REV F

CONFIDENTIAL: THIS DRAWING AND ITS INFORMATION ARE THE EXCLUSIVE AND CONFIDENTIAL PROPERTY OF A.O. SMITH CORP. AND ARE NOT TO BE DISCLOSED, DUPLICATED, DISTRIBUTED OR OTHERWISE USED WITHOUT THE WRITTEN CONSENT OF A.O. SMITH CORP.
 -ALL RIGHTS RESERVED. ASME Y14.5M 1994

AC Smith **ELECTRICAL PRODUCTS COMPANY**
 Innovation has a name. A DIVISION OF A. O. SMITH CORPORATION

DESCRIPTION: EXTERNAL PART-CONN. TYPE "S"

SIZE C DWG NO 621804-001

SCALE NONE SHEET 1

4

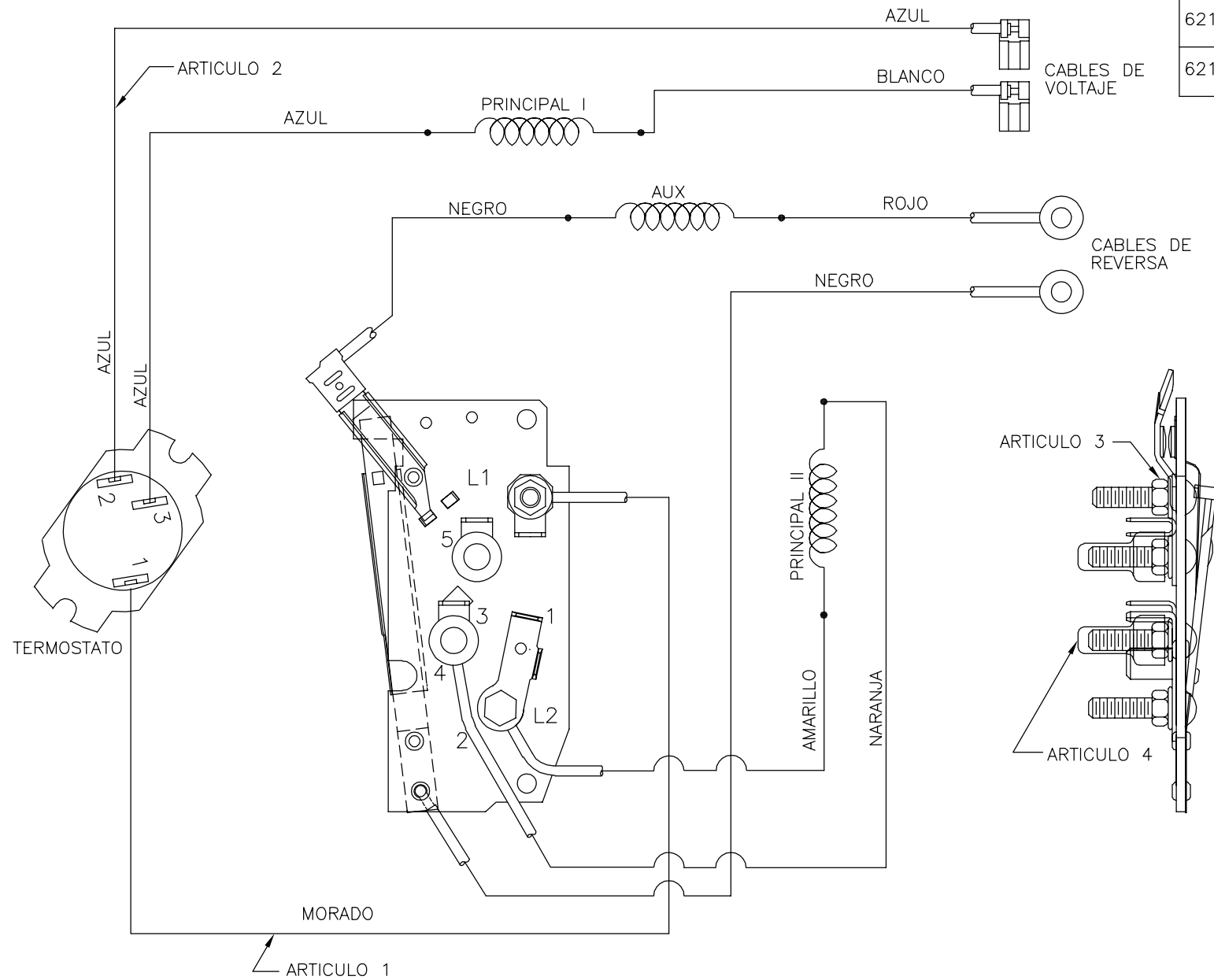
3

2

1

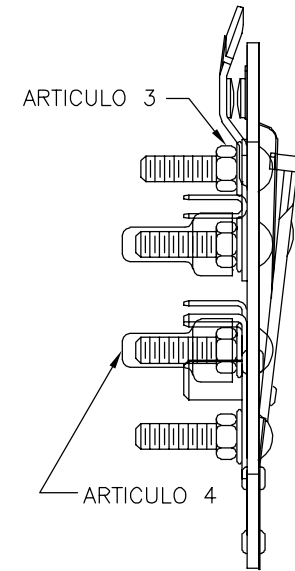
REVISION:	ECO	REVISADO POR:	FECHA:	APROBADO POR:	FECHA:
F	0007188	Lara Grado	06-22-2009	C. Contreras	06-22-2009

# DE PARTE	ROT	CONEXION	VOLTAJE	CONEXION	AVISO
621804-001A	CCW	NEGRO → 2 ROJO → 4	115	BLANCO → 1 AZUL → 3	92GR 0658
621804-001B	CW	ROJO → 2 NEGRO → 4	115	BLANCO → 1 AZUL → 3	---
621804-001C	CCW	NEGRO → 2 ROJO → 4	230	AZUL → 5 BLANCO → 3	94GR 0364
621804-001D	CW	ROJO → 2 NEGRO → 4	230	AZUL → 5 BLANCO → 3	---



NOTAS:

1. CONECTAR CABLES DE REVERSA Y DE VOLTAJE POR CONDICIONES DE GUION ESPECIFICADAS EN EL BOM DEL MODELO, PARA LAS TERMINALES MARCADAS CON FLECHA VER LA TABLA DE ARRIBA.
2. ENSAMBLE DE CABLE Y TERMINAL SEGUN PS-595
3. UBICACION DE LOS CALBES DEBE SER ESCENCIALMENTE COMO SE MUESTRA.



LISTA DE PARTES

ART.	REQ	DESCRIPCION	NUMERO PARTE
1	1	CABLE	091P18-U6-065-KD
2	1	CABLE	091BL18-U6-070-HB
3	4	TUERCA, HEX-#8	368C210H05
4	2	TERMINAL-AISLANTE	167A168H01

BIBUJO. REF: 369C382H03 TABLILLA DE TERMINALES

CARACTERISTICAS DE GEOMETRIA Y SIMBOLOS

- ▭ PLANICIDAD
- RECTITUD
- ∠ ANGULARIDAD
- ⊥ PERPENDICULARIDAD (A ESCUADRA)
- // PARALELISMO
- REDONDEZ (CIRCULARIDAD)
- ⊘ CILINDRICIDAD
- △ PERFIL DE CUALQUIER SUPERFICIE
- ∧ PERFIL DE CUALQUIER LINEA
- ↑ VARIACION
- ⊕ POSICION REAL
- ◎ CONCENTRICIDAD
- = SIMETRIA

A MENOS QUE SE ESPECIFIQUE DE OTRA MANERA, LAS TOLERANCIAS DE LAS DIMS; SON LAS SIGUIENTES:

PULG ±.1 ±.02 ±.005 ±.0005
mm ±0.5 ±0.13 ±0.013

ANG. ±50 GRADOS

ELIMINAR REBABAS Y ORILLAS FILOSAS DEL BORDE.

PULG .003-.015 mm 0.1-0.4
FILETEAR ESQUINA: PULG .020 mm 0.5
MAQUINAR SUPERFICIES
PULG 125 mm .32

DIMS METRICAS MOSTRADAS [PARENTESIS]

DIBUJADO POR:	SFW	02-12-2007
APROBADO POR:		
TERCER ANGULO DE PROYECCION	⊕	FECHA EDS: 02-22-2008 REV. FORMATO: F
CONFIDENCIAL: ESTE DIBUJO Y SU INFORMACION SON PROPIEDAD DE USO EXCLUSIVO Y CONFIDENCIAL DE A.O.SMITH CORP. Y NO DEBERAN SER REVELADOS, DUPLICADOS, DISTRIBUIDOS O USARSE DE OTRA MANERA SIN EL CONSENTIMIENTO ESCRITO DE A.O. SMITH CORP. -TODOS LOS DERECHOS RESERVADOS. ASME Y14.5M 1994		

AC Smith **ELECTRICAL PRODUCTS COMPANY**
Innovation has a name. A DIVISION OF A. O. SMITH CORPORATION

DESCRIPCION: EXTERNAL PART-CONN. TYPE "S"

TAMAÑO: C NUMERO DE DIBUJO: 621804-001

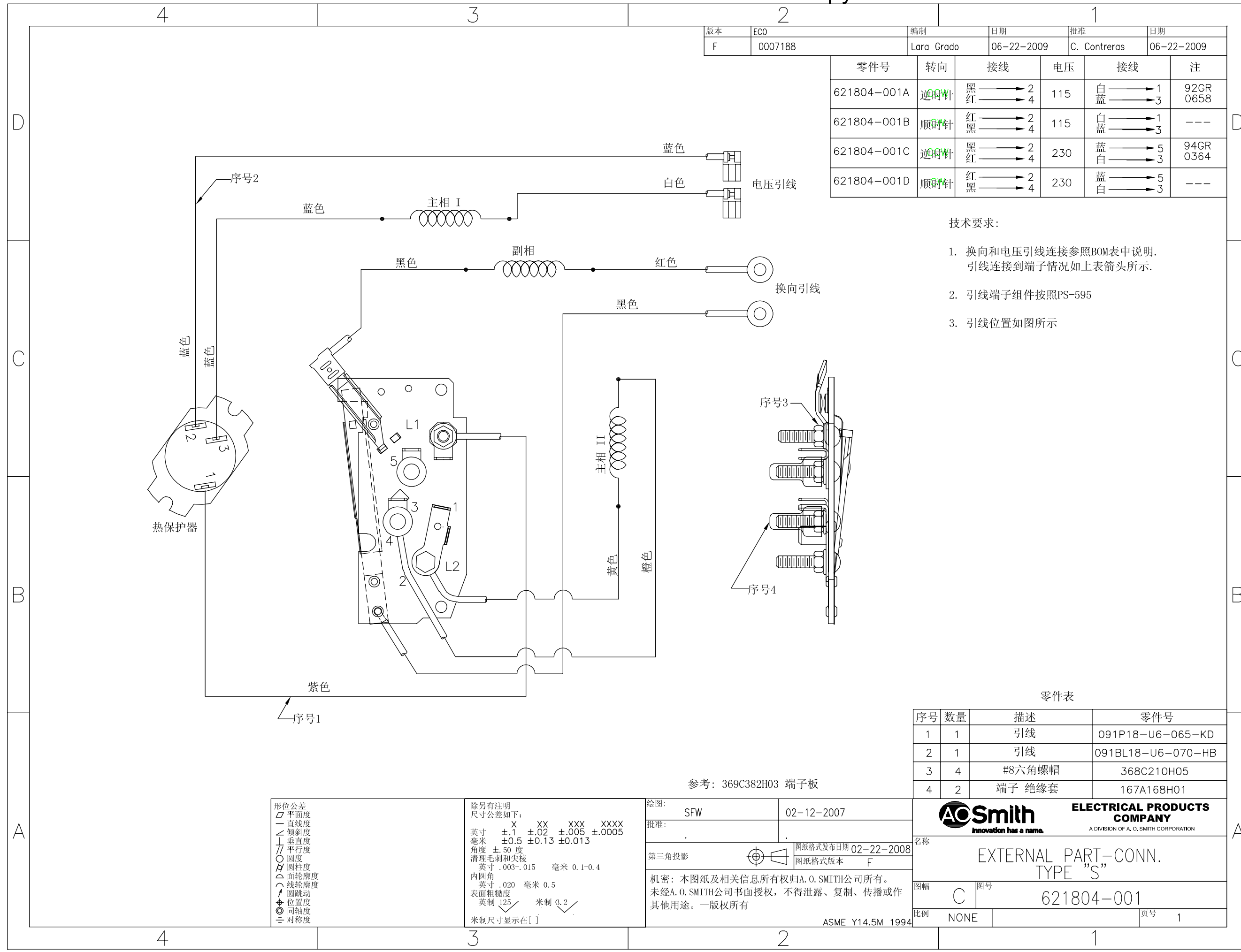
ESCALA: NONE HOJA: 1

4

3

2

1



版本	ECO	编制	Lara Grado	日期	06-22-2009	批准	C. Contreras	日期	06-22-2009
F	0007188								
零件号	转向	接线	电压	接线	注				
621804-001A	逆时针	黑 → 2 红 → 4	115	白 → 1 蓝 → 3	92GR 0658				
621804-001B	顺时针	红 → 2 黑 → 4	115	白 → 1 蓝 → 3	---				
621804-001C	逆时针	黑 → 2 红 → 4	230	蓝 → 5 白 → 3	94GR 0364				
621804-001D	顺时针	红 → 2 黑 → 4	230	蓝 → 5 白 → 3	---				

- 技术要求:
1. 换向和电压引线连接参照BOM表中说明. 引线连接到端子情况如上表箭头所示.
 2. 引线端子组件按照PS-595
 3. 引线位置如图所示

零件表

序号	数量	描述	零件号
1	1	引线	091P18-U6-065-KD
2	1	引线	091BL18-U6-070-HB
3	4	#8六角螺帽	368C210H05
4	2	端子-绝缘套	167A168H01

参考: 369C382H03 端子板

<p>形位公差</p> <ul style="list-style-type: none"> □ 平面度 — 直线度 ∠ 倾斜度 ⊥ 垂直度 ∥ 平行度 ○ 圆度 ⊘ 圆柱度 △ 面轮廓度 ⌒ 线轮廓度 ↗ 圆跳动 ⊕ 位置度 ◎ 同轴度 ≡ 对称度 	<p>除另有注明 尺寸公差如下:</p> <table border="0"> <tr> <td>英寸</td> <td>±.1</td> <td>±.02</td> <td>±.005</td> <td>±.0005</td> </tr> <tr> <td>毫米</td> <td>±0.5</td> <td>±0.13</td> <td>±0.013</td> <td></td> </tr> </table> <p>角度 ±.50 度 清理毛刺和尖棱 英寸 .003-.015 毫米 0.1-0.4</p> <p>内圆角 英寸 .020 毫米 0.5</p> <p>表面粗糙度 英制 125 米制 3.2</p> <p>米制尺寸显示在 []</p>	英寸	±.1	±.02	±.005	±.0005	毫米	±0.5	±0.13	±0.013	
英寸	±.1	±.02	±.005	±.0005							
毫米	±0.5	±0.13	±0.013								

绘图:	SFW	02-12-2007
批准:		
第三角投影		图纸格式发布日期 02-22-2008 图纸格式版本 F
机密: 本图纸及相关信息所有权归A. O. SMITH公司所有。 未经A. O. SMITH公司书面授权, 不得泄露、复制、传播或作 其他用途。—版权所有		
ASME Y14.5M 1994		

ELECTRICAL PRODUCTS COMPANY
A DIVISION OF A. O. SMITH CORPORATION

名称: EXTERNAL PART-CONN. TYPE "S"

图幅: C 图号: 621804-001

比例: NONE 页号: 1