

PRODUCT INFORMATION PACKET

FASCO®

Model No: D106

Catalog No: D106

Fan and Blower Motor, 1/40 HP, 1 Ph, 60 Hz, 115 V, 1550 RPM, 1 Speed, 3.3" Diameter, OAO



Regal and Fasco are trademarks of Regal Rexnord Corporation or one of its affiliated companies.

©2022 Regal Rexnord Corporation, All Rights Reserved. MC017097E

RegalRexnord



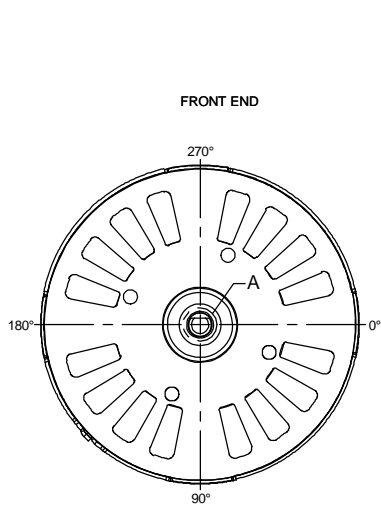
Nameplate Specifications

Output HP	1/40 Hp	Output KW	0.02 kW
Frequency	60 Hz	Voltage	115 V
Current	1.00 A	Speed	1550 rpm
Service Factor	1	Phase	1
Duty	Air Over	Insulation Class	B
Frame	3.3	Enclosure	Open Air Over
Thermal Protection	Thermally Protected	Ambient Temperature	40 °C
UL	No	CSA	N
CE	N	Number of Speeds	1

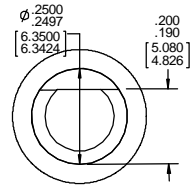
Technical Specifications

Electrical Type	Shaded Pole	Starting Method	Across The Line
Poles	4	Rotation	Counterclockwise Shaft End
Mounting	Extended Studs	Drive End Bearing	Sleeve
Opp Drive End Bearing	Sleeve	Frame Material	Steel
Shaft Type	Flat	Overall Length	3.99 in
Frame Length	1.95 in	Shaft Diameter	0.250 in
Shaft Extension	1.80 in		
Connection Drawing	NA	Outline Drawing	71730293

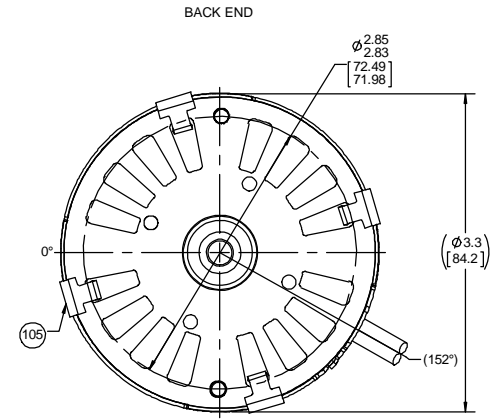
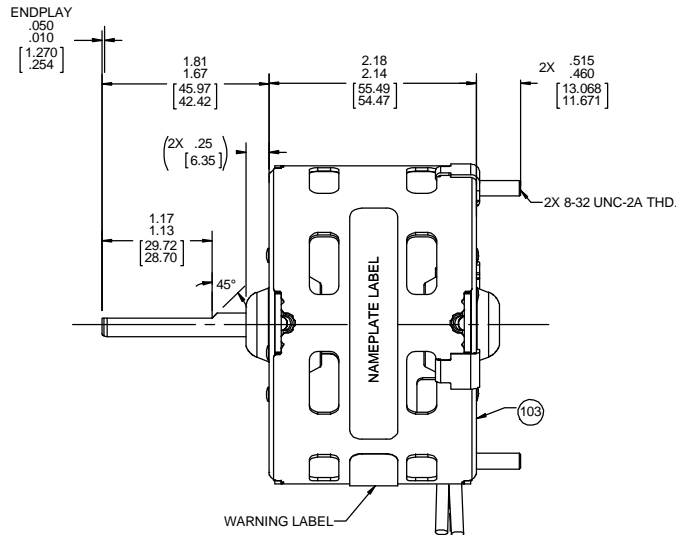
This is an uncontrolled document once printed or downloaded and is subject to change without notice. Date Created:11/29/2022



ROTATION



SHAFT DETAIL A



LEAD MATERIAL
 18 GA. 4/64 INSUL. 125°C EPDM (1)
 BLACK, 23.00/21.00 [584.20/533.40]
 W/FSPADE TERM. AMP 42692-2 (1)
 BLACK, 13.00/11.00 [330.20/279.40]
 W/FSPADE TERM. AMP 42692-2

- NOTES:
 1. 270 MAX. MOTORS PER PALLET.
 2. NO PACKING TAPE OVER CARTON LABEL.

61305815

SAFETY WARNING
 This motor must be grounded in accordance with local or national electrical codes to prevent possible injury due to electrical shock.

AVERTISSEMENT DE SÉCURITÉ
 Ce moteur doit être fondée sur conformément à la réglementation locale ou nationale électrique codes pour prévenir d'éventuelles blessures en raison de choc électrique.

00464506

FASCO INDUSTRIES INC. No. 71730293
 Assembled in Mexico TYPE U73B1

115 V 60 Hz Class B
 1.0 A 1550 RPM
 Model D106 Thermally Protected AO

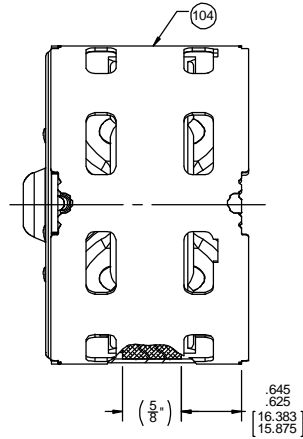
61299553

CUSTOMER:	FASCO DIST.	APPLICATION:									
CUSTOMER PN:	D106	MOTOR WEIGHT:	2 LBS								
	UP	ENVIRONMENT:	DRY								
		MOTOR TYPE									
		SHADED POLE									
	B	LA	FR								
	00	73	30								
		A	S								
		V	01								
		C	E								
		B	A								
		1	0								
TYPICAL PERFORMANCE AT 115 VOLTS 60 HZ											
	IDLE			LOADED			LOCKED			BREAK	
MOTOR SPEED	RPM	AMP	WATT	IN OZ	RPM	AMP	WATT	IN OZ	AMP	WATT	IN OZ
	1747	.96	54	16.4	1550	1.00	74	7.0	1.37	104	19.2

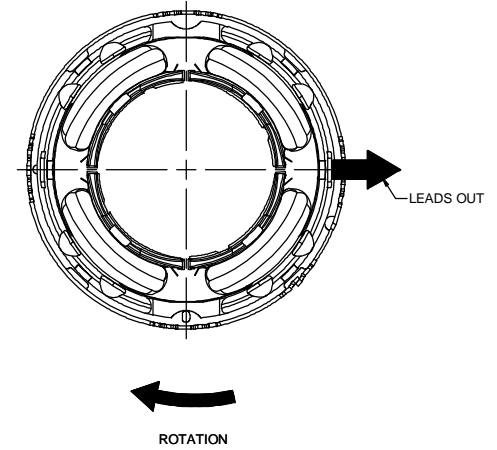
DRAWING REVISION AA	REVISION BY FDP	DATE 8/14/2017	TOLERANCES UNLESS OTHERWISE SPECIFIED: DEC. INCH mm ANGLE .X ±0.1 [±2.5] 1° .XX ±0.01 [±0.25] .XXX ±0.005 [±0.127] .XXXX ±0.0005 [±0.0127] REMOVE BURRS & BREAK SHARP EDGES. .0031 [0.076/361] X 45° CORNER FILLETS: R.02 [51] MACHINED SURFACES: .125/ 3.2 INCH/ mm SHOWN IN (BRACKETS)	DRAWN BY FDP	DATE 8/14/2017	DESCRIPTION OUTLINE MOTOR ASSY
ECO-0129348	APPROVED BY SDM	DATE 8/14/2017	CHANGED SAFETY LABEL TO 61305568 COPYRIGHT REGAL BELOIT AMERICA, INC. ALL RIGHTS RESERVED. PROPRIETARY AND CONFIDENTIAL INFORMATION. THIS DOCUMENT IS THE PROPERTY OF REGAL BELOIT AMERICA, INC. FORMERLY AND CONTAINS OWNERS PROPRIETARY INFORMATION. ANY PERSON, CORPORATION OR OTHER FIRM RECEIVING IT IS DEEMED BY RECEIVING IT, TO AGREE THAT IT, AND/OR ANY PART OF IT, SHALL NOT BE DISCLOSED TO ANY PERSON, CORPORATION OR OTHER ENTITY, DUPLICATED, AND/OR USED, EXCEPT AS EXPRESSLY APPROVED IN WRITING IN ADVANCE BY OWNER. THIS DOCUMENT SHALL BE RETURNED TO OWNER UPON REQUEST. IT MAY BE SUBJECT TO CERTAIN RESTRICTIONS UNDER APPLICABLE EXPORT CONTROL LAWS AND REGULATIONS.	APPROVED BY SDM	DATE 8/14/2017	REFERENCE
			THIRD ANGLE PROJECTION	SIZE C	DRAWING NUMBER 71730293	PROCESS/FINISH
						SHEET 1 OF 2

- NOTES:
 1. STAKE STATOR TO MAIN FRAME PER 88830254.
 2. MAXIMUM TORQUE REQUIRED TO TURN MOTOR SHAFT IS 1/4 IN. OZ.
 3. MAKE UP WASHERS ARE TO BE ADDED OR DELETED TO ACHIEVE REQUIRED ENDPLAY.

FRONT END



BACK END



PACKING SPECIFICATIONS

- PACK PER 88834200, 1 PER CARTON, 45 PER LAYER. 270 MAX. PER PALLET.
- PLACE FOAM RING ON WELD BOLTS OPPOSITE SHAFT END OF MOTOR AND FILLER TUBE OVER SHAFT. PLACE MOTOR IN CARTON SHAFT UP. CLOSE FLAPS AND TAPE.
- PLACE CARTON LABEL ON SHAFT EXTENSION END OF CARTON. CARTON LABELS MUST ALL FACE DIRECTION TOWARD THE OPEN END OF THE PALLET. SEE 88834408.
- PLACE (1) FLAT PAD BETWEEN EACH LAYER AND (1) ON TOP. TRIM FLAT PADS SO THEY DO NOT EXTEND PAST OUTER EDGE OF CARTONS.
- PLACE ALL INSPECTION STICKERS AND WRITING ON TOP FLAT PAD.

DRAWING REVISION AA	REVISION BY FDP	DATE 8/14/2017	TOLERANCES UNLESS OTHERWISE SPECIFIED: DEC. INCH mm ANGLE	DRAWN BY FDP	Regal Beloit America, Inc.
ECO-0129348	APPROVED BY SDM	DATE 8/14/2017	.X ±0.1 [±2.5] ±1° .XX ±0.01 [±0.25] .XXX ±0.005 [±0.127] .XXXX ±0.0005 [±0.0127]	DATE 8/14/2017	
ECO DESCRIPTION CHANGED SAFETY LABEL TO 61305568 COPYRIGHT REGAL BELOIT AMERICA, INC. ALL RIGHTS RESERVED.			REMOVE BURRS & BREAK SHARP EDGES: .003/.015 [0.076/.381] X 45° CORNER FILLETS: R.02 [.51]	APPROVED BY SDM	
<small>PROPRIETARY AND CONFIDENTIAL INFORMATION. THIS DOCUMENT IS THE PROPERTY OF REGAL BELOIT AMERICA, INC. FORMERLY AND CONTAINS OWNERS PROPRIETARY INFORMATION. ANY PERSON, CORPORATION OR OTHER FIRM RECEIVING IT IS DEEMED BY RECEIVING IT, TO AGREE THAT IT, AND/OR ANY PART OF IT, SHALL NOT BE DISCLOSED TO ANY PERSON, CORPORATION OR OTHER ENTITY, DUPLICATED, AND/OR USED, EXCEPT AS EXPRESSLY APPROVED IN WRITING IN ADVANCE BY OWNER. THIS DOCUMENT SHALL BE RETURNED TO OWNER UPON REQUEST. IT MAY BE SUBJECT TO CERTAIN RESTRICTIONS UNDER APPLICABLE EXPORT CONTROL LAWS AND REGULATIONS.</small>			MACHINED SURFACES: .125/ 3.2 INCH/ mm SHOWN IN (BRACKETS)	DATE 8/14/2017	
<small>THIRD ANGLE PROJECTION</small>				REFERENCE	DESCRIPTION OUTLINE MOTOR ASSY
				SIZE C	MATERIAL
				DRAWING NUMBER 71730293	PROCESS/FINISH
				SHEET 2 OF 2	