

PRODUCT INFORMATION PACKET

FASCO®

Model No: D1121

Catalog No: D1121

OEM Replacement Motor, 1/20 HP, 1 Ph, 60 Hz, 208/230 V, 1550 RPM, 1 Speed, 3.3" Diameter, OAO



Regal and Fasco are trademarks of Regal Rexnord Corporation or one of its affiliated companies.

©2022 Regal Rexnord Corporation, All Rights Reserved. MC017097E

RegalRexnord



Nameplate Specifications

Output HP	1/20 Hp	Output KW	0.04 kW
Frequency	60 Hz	Voltage	208/230 V
Current	1.00 A	Speed	1550 rpm
Service Factor	1	Phase	1
Duty	Air Over	Insulation Class	B
Frame	3.3	Enclosure	Open Air Over
Thermal Protection	Thermally Protected	Ambient Temperature	40 °C
UL	Recognized	CSA	Y
CE	N	Number of Speeds	1

Technical Specifications

Electrical Type	Shaded Pole	Starting Method	Across The Line
Poles	4	Rotation	Clockwise Shaft End
Mounting	Extended Studs	Drive End Bearing	Sleeve
Opp Drive End Bearing	Sleeve	Frame Material	Steel
Shaft Type	Flat	Overall Length	6.52 in
Frame Length	3.30 in	Shaft Diameter	0.313 in
Shaft Extension	2.5 in		
Outline Drawing	71731616	Connection Drawing	NA

This is an uncontrolled document once printed or downloaded and is subject to change without notice. Date Created:11/29/2022

4

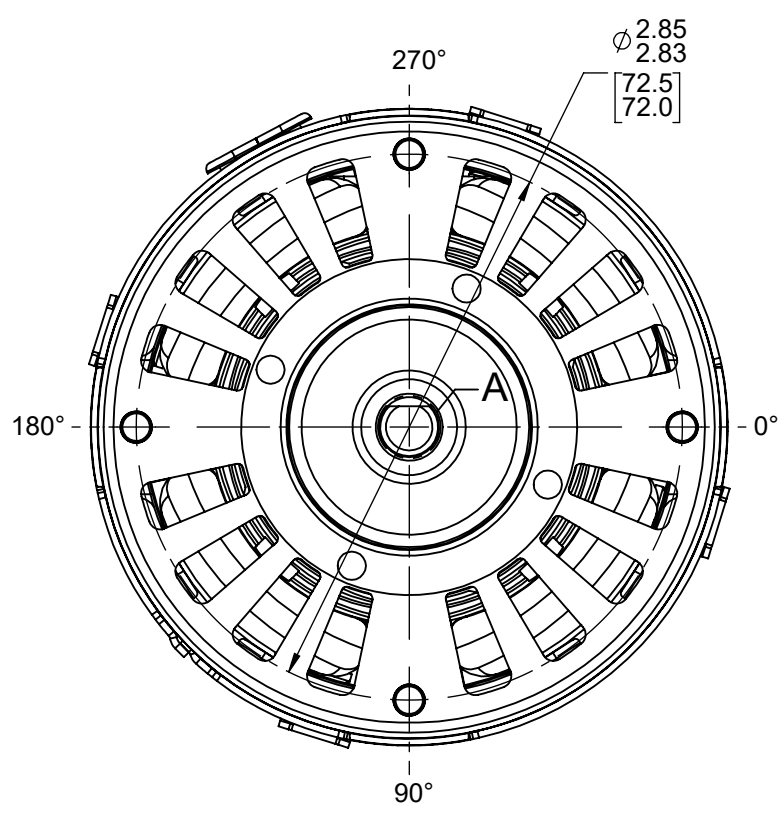
3

2

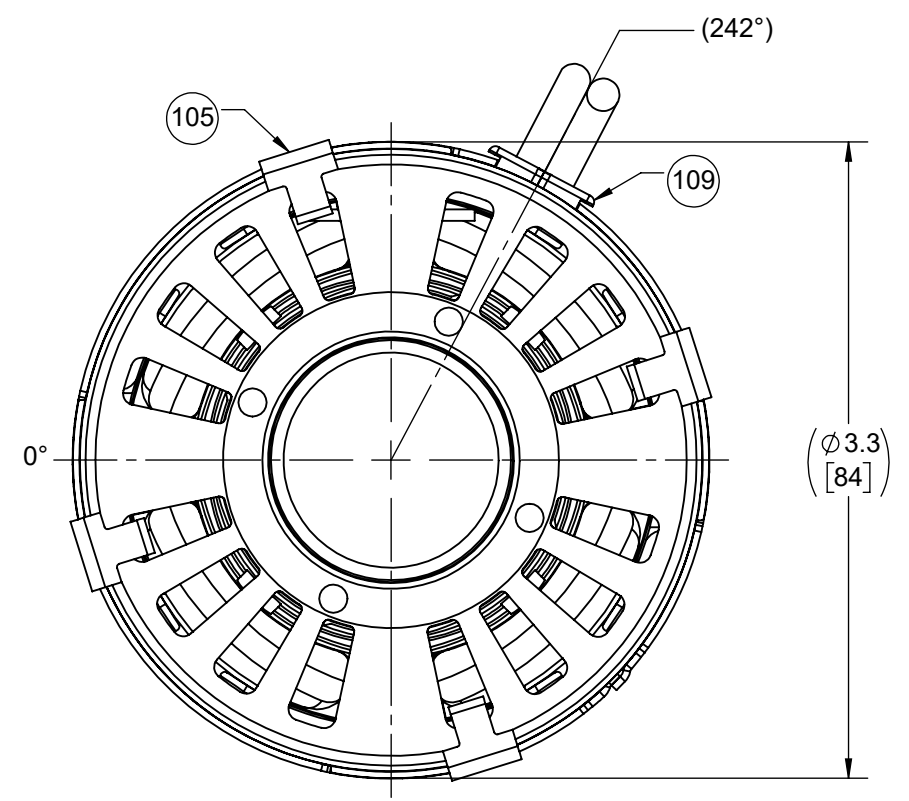
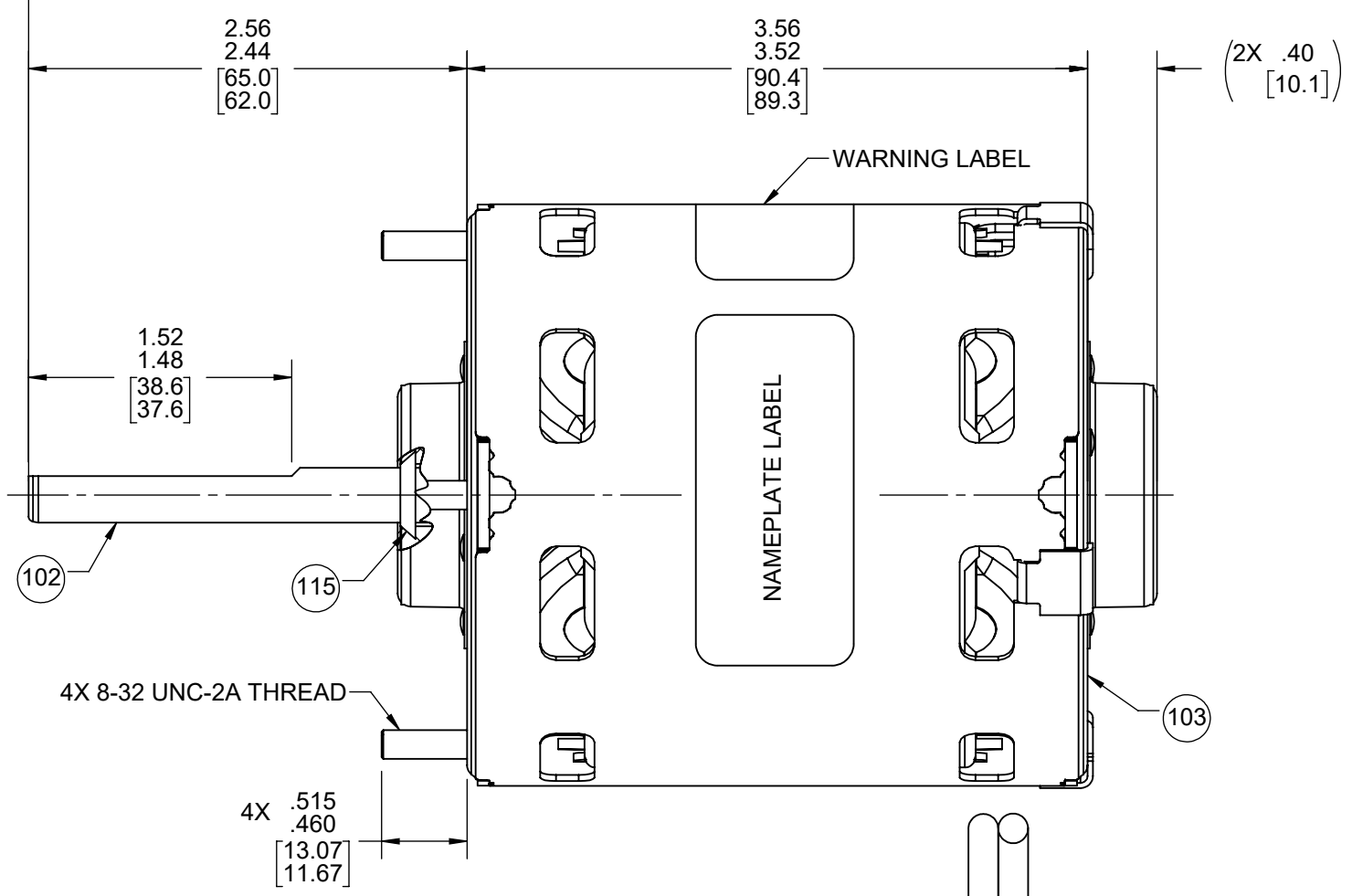
1

FRONT END

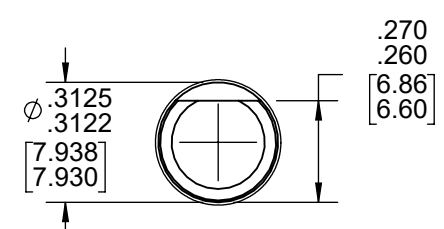
BACK END



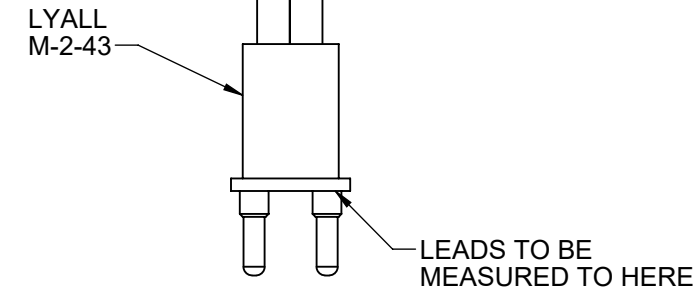
ENDPLAY
.030
.010
[.76]
[.25]



LEAD MATERIAL
18 GA. 105°C 4/64 INSUL.
PARALLEL PVC
BLACK
12.00/10.00 [304.8/254.0]



DETAIL A
SHAFT



- NOTES:
1. STUDS MUST BE FREE OF PAINT.
2. NO PACKING TAPE OVER CARTON LABEL.

CUSTOMER:	FASCO DIST.	APPLICATION:	DIST.								
CUSTOMER PN:	D1121	MOTOR WEIGHT:	4.62 LBS.								
		ENVIRONMENT:	WET								
HORIZONTAL	MOTOR TYPE		REFERENCE SAMPLE								
	SHADED POLE										
	B	LA	FR	A							
	00	73	30	V							
			S	08							
			C	EP							
			E	5							
			B	4							
			A	0							
TYPICAL PERFORMANCE AT 230 VOLTS 60 HZ											
MOTOR SPEED	IDLE		LOADED		LOCKED	BREAK					
	RPM	AMP	WATT	IN OZ			RPM	AMP	WATT	IN OZ	
	1770	.99	116	56.4	1550	1.25	188	22.4	1.84	270	58.1

SAFETY WARNING
This motor must be grounded in accordance with local or national electrical codes to prevent possible injury due to electrical shock

AVERTISSEMENT DE SECURITE
Ce moteur doit être fondée sur conformément à la réglementation locale ou national électrique codes pour prévenir d'éventuelles blessures en raison de choc électrique

FASCO™

Assembled In Mexico
No. 71731616 TYPE U73B1 AO LR6319
208-230 V 60 Hz Class B
1.0 A 1550 RPM 1/20 HP
Model D1121 Max Amb: 40°C
Thermally Protected

DRAWING REVISION AC	REVISION BY MLS	REV DATE/DATE 8/19/2022	TOLERANCES (EXCEPT AS NOTED): DEC. INCH mm ANGLE .X ±0.1 [±3] ±1° .XX ±0.01 [±0.3] .XXX ±0.005 [±0.13] .XXX ±0.0005 [±0.013]	DRAWN BY MLS		Regal Beloit America, Inc.
REQUEST NUMBER ECR-0220288	APPROVED BY KKM	DATE 8/19/2022	REMOVE BURRS & BREAK SHARP EDGES: .003/.015 [.08/.38] X 45° CORNER FILLETS: R.02 [5] MACHINED SURFACES: .125/ 3.2 INCH/mm mm DIMENSIONS IN [BRACKETS] ARE FOR REFERENCE ONLY	DATE 3/21/2017	DESCRIPTION OUTLINE MOTOR ASSY	
COPYRIGHT (PER REVISION DATE) REGAL BELOIT AMERICA, INC. ALL RIGHTS RESERVED. PROPRIETARY AND CONFIDENTIAL INFORMATION - THIS DOCUMENT IS THE PROPERTY OF REGAL BELOIT AMERICA, INC. (OWNER) AND CONTAINS OWNER'S PROPRIETARY INFORMATION. ANY PERSON, CORPORATION OR OTHER FIRM RECEIVING IT IS DEEMED, BY RECEIVING IT, TO AGREE THAT IT, AND/OR ANY PART OF IT, SHALL NOT BE DISCLOSED TO ANY PERSON, CORPORATION OR OTHER ENTITY, DUPLICATED, AND/OR USED, EXCEPT AS EXPRESSLY APPROVED IN WRITING IN ADVANCE BY OWNER. THIS DOCUMENT SHALL BE RETURNED TO OWNER UPON REQUEST. IT MAY BE SUBJECT TO CERTAIN RESTRICTIONS UNDER APPLICABLE EXPORT CONTROL LAWS AND REGULATIONS.				APPROVED BY SED	MATERIAL BLACK	PROCESS/FINISH BLACK
				DATE 3/21/2017	DRAWING NUMBER 71731616	SHEET 1 OF 2

4

3

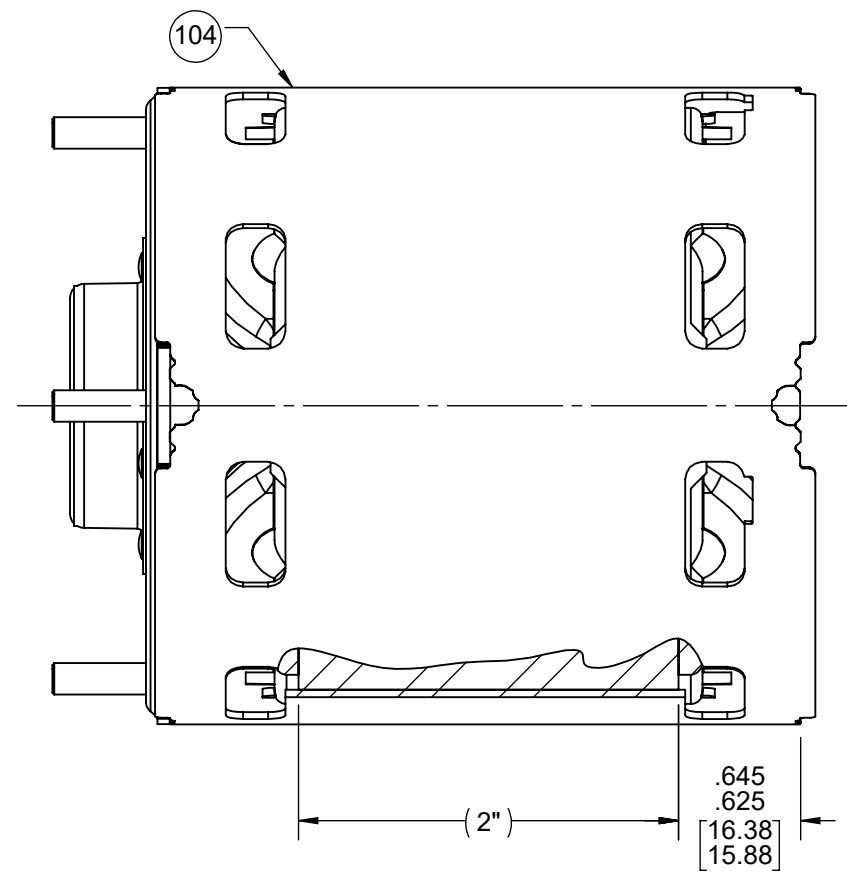
2

1

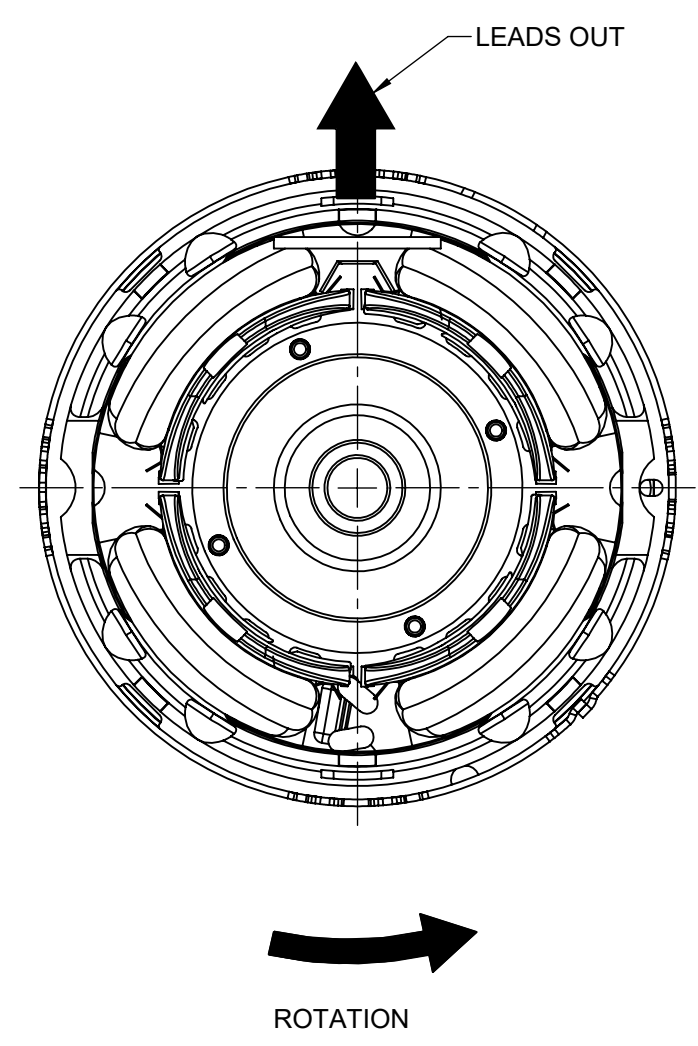
NOTES:

1. STAKE STATOR TO MAIN FRAME PER 88830264.
2. MAXIMUM TORQUE REQUIRED TO TURN MOTOR SHAFT IS 3/8 INCH-OUNCE.
3. MAKE-UP WASHERS ARE TO ADDED OR DELETED TO ACHIEVE REQUIRED ENDPLAY.
4. OIL SLINGER MUST BE FLUSH WITH INSIDE EDGE OF EXTERNAL CAP.
5. LEAD RIP ON FASCO END MUST NOT EXTEND OUTSIDE OF MAIN FRAME.

FRONT END



BACK END



PACKING SPECIFICATIONS

1. PACK 1 PER CONTAINER, 45 CONTAINERS PER LAYER, 6 LAYERS PER PALLET, 270 MAX. PER PALLET. PER 88834200.
2. CARTON LABELS MUST FACE ONE DIRECTION, TOWARD THE OPEN END OF THE PALLET, PER 88834408.

DRAWING REVISION AC	REVISION BY MLS	REV DATE/© DATE 8/19/2022	TOLERANCES (EXCEPT AS NOTED): DEC. INCH mm ANGLE	DRAWN BY MLS	Regal Beloit America, Inc.
REQUEST NUMBER ECR-0220288	APPROVED BY KKM	DATE 8/19/2022	.X ±0.1 [±3] ±1° .XX ±0.01 [±0.3] .XXX ±0.005 [±0.13] .XXXX ±0.0005 [±0.013]	DATE 3/21/2017	
REQUEST NUMBER DESCRIPTION UPDATED FASCO LOGO ON NAMEPLATE LABEL			REMOVE BURRS & BREAK SHARP EDGES: .003/.015 [.08/.38] X 45° CORNER FILLETS: R.02 [5] MACHINED SURFACES: .125/ mm 3.2 INCH/mm	APPROVED BY SED	DESCRIPTION OUTLINE MOTOR ASSY
<small>COPYRIGHT (PER REVISION DATE) REGAL BELOIT AMERICA, INC. ALL RIGHTS RESERVED. PROPRIETARY AND CONFIDENTIAL INFORMATION - THIS DOCUMENT IS THE PROPERTY OF REGAL BELOIT AMERICA, INC. ("OWNER") AND CONTAINS OWNER'S PROPRIETARY INFORMATION. ANY PERSON, CORPORATION OR OTHER FIRM RECEIVING IT IS DEEMED, BY RECEIVING IT, TO AGREE THAT IT, AND/OR ANY PART OF IT, SHALL NOT BE DISCLOSED TO ANY PERSON, CORPORATION OR OTHER ENTITY, DUPLICATED, AND/OR USED, EXCEPT AS EXPRESSLY APPROVED IN WRITING IN ADVANCE BY OWNER. THIS DOCUMENT SHALL BE RETURNED TO OWNER UPON REQUEST. IT MAY BE SUBJECT TO CERTAIN RESTRICTIONS UNDER APPLICABLE EXPORT CONTROL LAWS AND REGULATIONS.</small>			THIRD ANGLE PROJECTION	DATE 3/21/2017	MATERIAL
			SIZE C	DRAWING NUMBER 71731616	PROCESS/FINISH BLACK

4

3

2

1