

PRODUCT INFORMATION PACKET



Model No: D124
Catalog No: D124

Fan and Blower Motor, 1/50 HP, 1 Ph, 60 Hz, 115 V, 1500 RPM, 1 Speed, 3.3" Diameter, TEAO



Regal and Fasco are trademarks of Regal Rexnord Corporation or one of its affiliated companies.
©2022 Regal Rexnord Corporation, All Rights Reserved. MC017097E





Nameplate Specifications

Output HP	1/50 Hp	Output KW	0.01 kW
Frequency	60 Hz	Voltage	115 V
Current	0.80 A	Speed	1500 rpm
Service Factor	1	Phase	1
Duty	Air Over	Insulation Class	B
Frame	3.3	Enclosure	Totally Enclosed Air Over
Thermal Protection	Thermally Protected	Ambient Temperature	40 °C
UL	Recognized	CSA	Y
CE	N	Number of Speeds	1

Technical Specifications

Electrical Type	Shaded Pole	Starting Method	Across The Line
Poles	4	Rotation	Clockwise Shaft End
Mounting	Extended Studs	Drive End Bearing	Sleeve
Opp Drive End Bearing	Sleeve	Frame Material	Steel
Shaft Type	Flat	Overall Length	5.08 in
Frame Length	2.24 in	Shaft Diameter	0.250 in
Shaft Extension	2.30 in		
Connection Drawing	NA	Outline Drawing	71631429

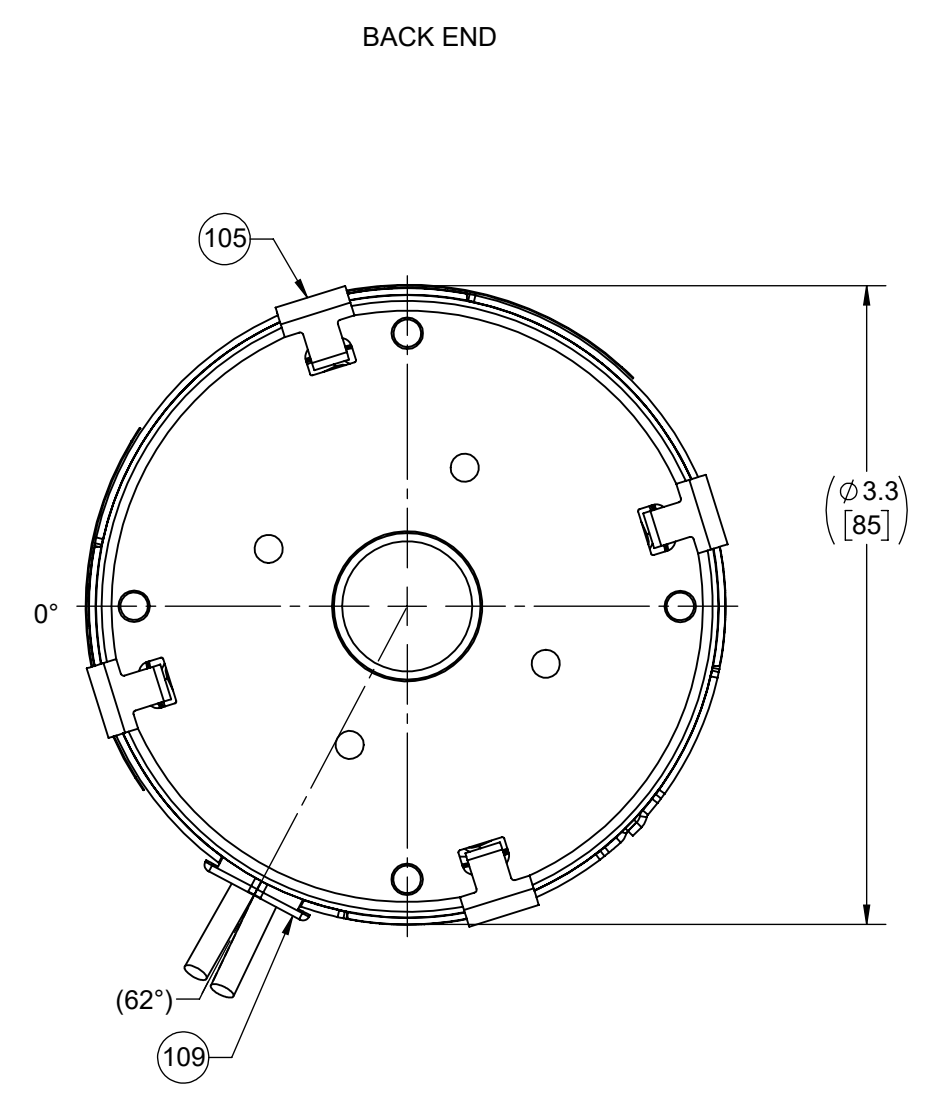
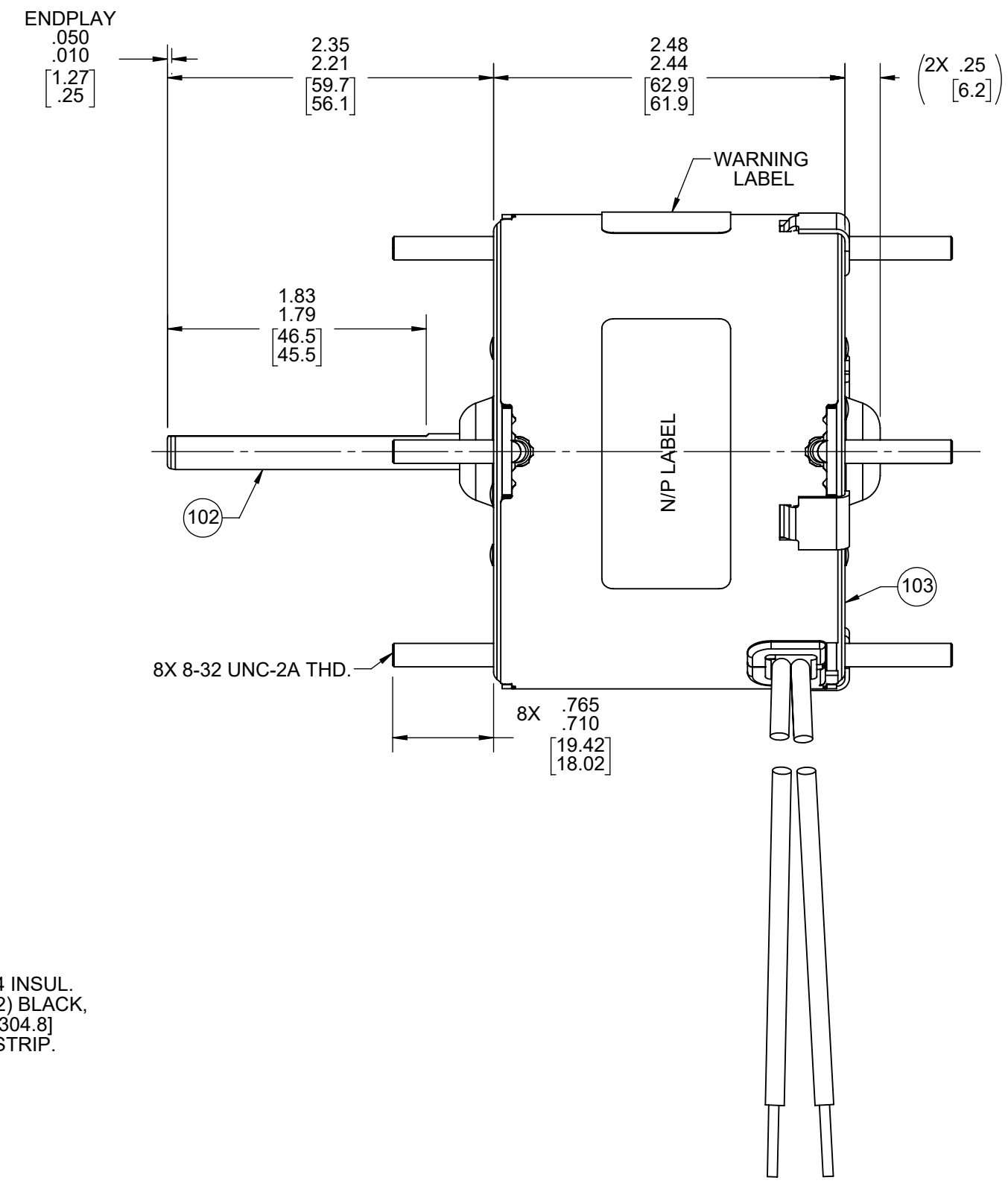
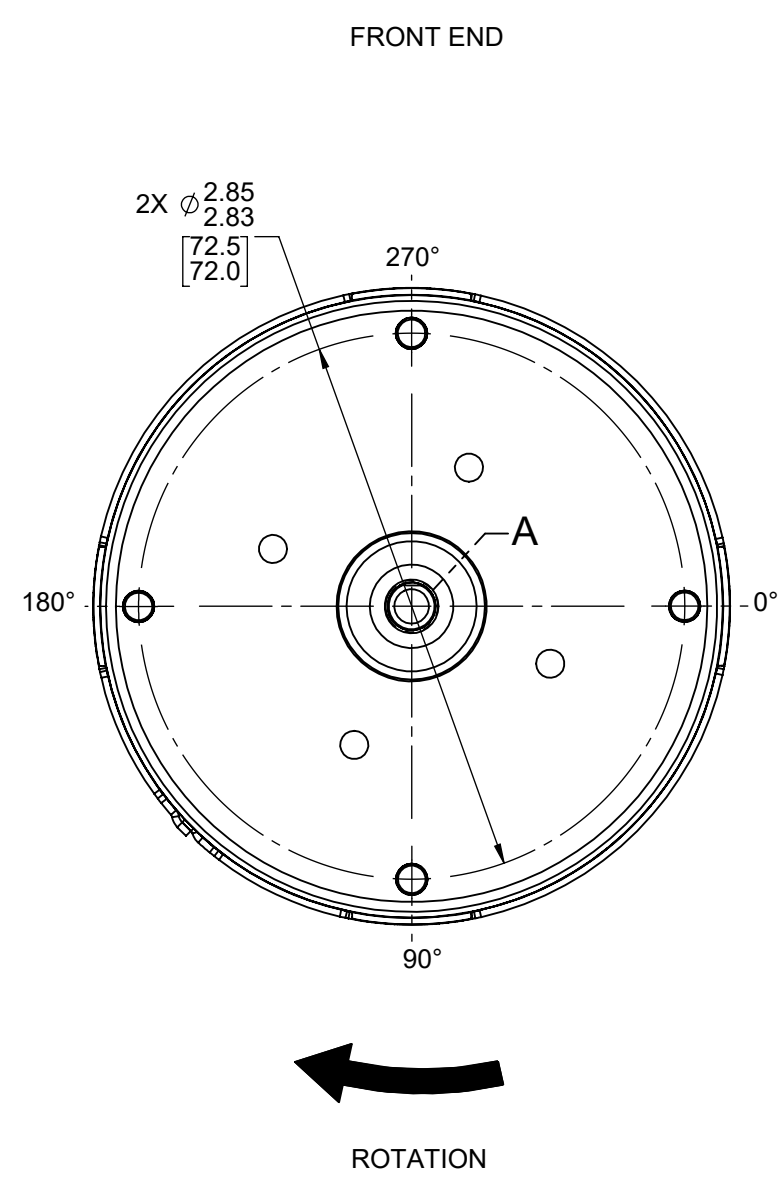
This is an uncontrolled document once printed or downloaded and is subject to change without notice. Date Created:11/29/2022

4

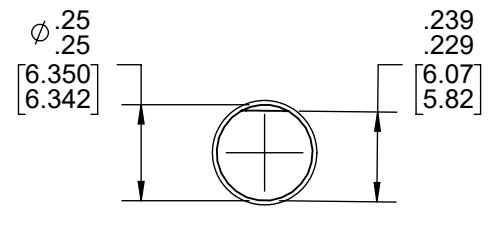
3

2

1



LEAD MATERIAL
18 GA. 125°C, 2/64 INSUL.
X-LINKED POLY. (2) BLACK,
14.00/12.00 [355.6/304.8]
.68/.56 [17.3/14.2] STRIP.



- NOTES:
- NO PACKING TAPE OVER CARTON LABEL
 - MOTOR HAS 416 SS SHAFT.

61305568

00464071

SAFETY WARNING
This motor must be grounded in accordance with local or national electrical codes to prevent possible injury due to electrical shock



AVERTISSEMENT DE SÉCURITÉ
Ce moteur doit être fondée sur conformément à la réglementation locale ou national électrique codes pour prévenir d'éventuelles blessures en raison de choc électrique

FASCO™

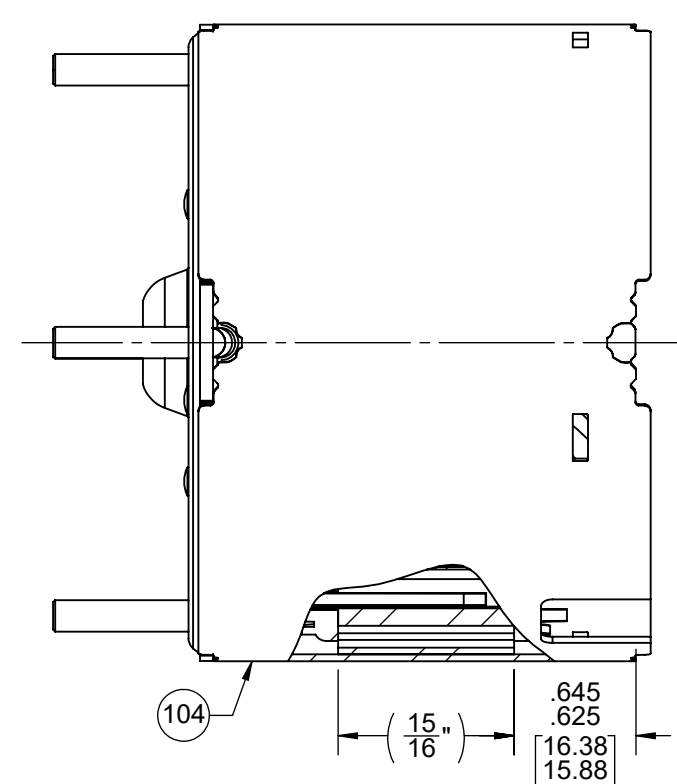
Assembled in Mexico
No. 71631429 TYPE U63B1 T.P. TEAO
115V 60Hz Class B
0.8A 1500 RPM 1/50 HP
Model D124 Max Amb: 40° C
LR6319

CUSTOMER:	FASCO DIST.	APPLICATION:	COUNTER SALES								
CUSTOMER PN:	D124	MOTOR WEIGHT:	2.66 LBS								
	UP	ENVIRONMENT:	DRY								
MOTOR TYPE SHADED POLE											
	B	LA	FR								
	00	63	30								
	A	S	C								
	T	03	OR								
	E	B	A								
	5	1	0								
TYPICAL PERFORMANCE AT 115 VOLTS 60 HZ											
MOTOR SPEED	IDLE		LOADED			LOCKED		BREAK			
	RPM	AMP	WATT	IN OZ	RPM	AMP	WATT	IN OZ	AMP	WATT	IN OZ
	1765	.68	38	15.5	1500	.79	57	4.7	1.11	79	13.6

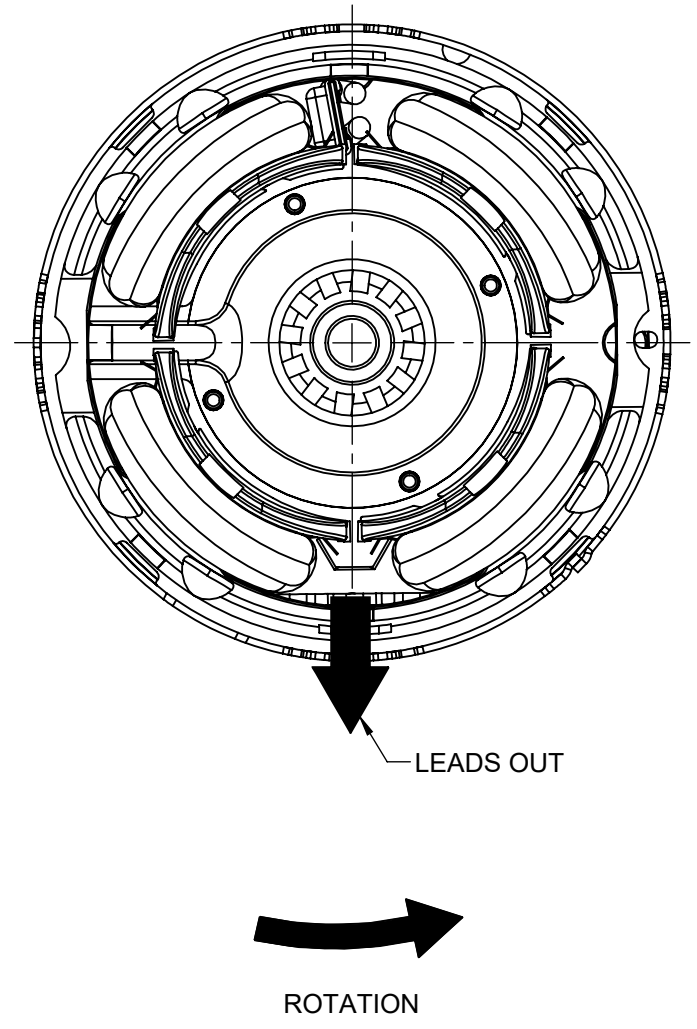
DRAWING REVISION AC	REVISION BY MH	REV DATE/© DATE 7/21/2022	TOLERANCES (EXCEPT AS NOTED): DEC. INCH mm ANGLE .X ±0.1 [±3] ±1° .XX ±0.01 [±0.3] .XXX ±0.005 [±0.13] .XXXX ±0.0005 [±0.013]	DRAWN BY FDP	Regal Beloit America, Inc.
REQUEST NUMBER ECR-0219616	APPROVED BY SDM	DATE 7/21/2022	REMOVE BURRS & BREAK SHARP EDGES: .003/.015 [.08/.38] X 45° CORNER FILLETS: R.02 [.5] MACHINED SURFACES: .125/ mm 3.2/ INCH mm mm DIMENSIONS IN [BRACKETS] ARE FOR REFERENCE ONLY	DATE 08/09/2017	
REQUEST NUMBER DESCRIPTION CHANGE FASCO LOGO			DATE 08/09/2017	APPROVED BY MLS	DESCRIPTION OUTLINE MOTOR ASSY
COPYRIGHT (PER REVISION DATE) REGAL BELOIT AMERICA, INC. ALL RIGHTS RESERVED. PROPRIETARY AND CONFIDENTIAL INFORMATION - THIS DOCUMENT IS THE PROPERTY OF REGAL BELOIT AMERICA, INC. (OWNER) AND CONTAINS OWNER'S PROPRIETARY INFORMATION. ANY PERSON, CORPORATION OR OTHER FIRM RECEIVING IT IS DEEMED, BY RECEIVING IT, TO AGREE THAT IT, AND/OR ANY PART OF IT, SHALL NOT BE DISCLOSED TO ANY PERSON, CORPORATION OR OTHER ENTITY, DUPLICATED, AND/OR USED, EXCEPT AS EXPRESSLY APPROVED IN WRITING IN ADVANCE BY OWNER. THIS DOCUMENT SHALL BE RETURNED TO OWNER UPON REQUEST. IT MAY BE SUBJECT TO CERTAIN RESTRICTIONS UNDER APPLICABLE EXPORT CONTROL LAWS AND REGULATIONS.			DATE 08/09/2017	REFERENCE	MATERIAL PROCESS/FINISH BLACK
			THIRD ANGLE PROJECTION	SIZE C	DRAWING NUMBER 71631429
					SHEET 1 OF 2

- NOTES.
1. STAKE STATOR TO MAIN FRAME PER 88830264.
 2. MAXIMUM TORQUE REQUIRED TO TURN MOTOR SHAFT IS 1/4 INCH-OUNCE .
 3. MAKE- UP WASHERS ARE TO BE ADDED OR DELETED TO ACHIEVE REQUIRED ENDPLAY.

FRONT END



BACK END



PACKING SPECIFICATIONS

1. PACK PER 88834200. 1 PER CARTON, 45 PER LAYER, 6 LAYERS PER PALLET, 270 MAX AMT. PER PALLET.
2. PLACE FOAM RING ON BACK END OF MOTOR, PLACE FILLER TUBE OVER SHAFT EXTENSION AND PLACE IN CARTON SHAFT UP, CLOSE FLAPS AND TAPE.
3. CARTON LABELS MUST ALL FACE ONE DIRECTION TOWARD THE OPEN END OF THE PALLET, SEE 88834408.
4. PLACE (1) FLAT PAD ON PALLET, (1) BETWEEN EACH LAYER AND (1) ON TOP.
5. PLACE ALL INSPECTION STICKERS AND WRITING ON TOP FLAT PAD.

DRAWING REVISION AC	REVISION BY MH	REV DATE/© DATE 7/21/2022	TOLERANCES (EXCEPT AS NOTED): DEC. INCH mm ANGLE	DRAWN BY FDP	Regal Rexnord Regal Beloit America, Inc.
REQUEST NUMBER ECR-0219616	APPROVED BY SDM	DATE 7/21/2022	.X ±0.1 [±3] ±1° .XX ±0.01 [±0.3] .XXX ±0.005 [±0.13] .XXXX ±0.0005 [±0.013]	DATE 08/09/2017	
REQUEST NUMBER DESCRIPTION CHANGE FASCO LOGO			REMOVE BURRS & BREAK SHARP EDGES: .003/.015 [.08/.38] X 45° CORNER FILLETS: R.02 [.5] MACHINED SURFACES: .125/ mm 3.2/ INCH mm	APPROVED BY MLS	DESCRIPTION OUTLINE MOTOR ASSY
COPYRIGHT (PER REVISION DATE) REGAL BELOIT AMERICA, INC. ALL RIGHTS RESERVED. PROPRIETARY AND CONFIDENTIAL INFORMATION - THIS DOCUMENT IS THE PROPERTY OF REGAL BELOIT AMERICA, INC. ("OWNER") AND CONTAINS OWNER'S PROPRIETARY INFORMATION. ANY PERSON, CORPORATION OR OTHER FIRM RECEIVING IT IS DEEMED, BY RECEIVING IT, TO AGREE THAT IT, AND/OR ANY PART OF IT, SHALL NOT BE DISCLOSED TO ANY PERSON, CORPORATION OR OTHER ENTITY, DUPLICATED, AND/OR USED, EXCEPT AS EXPRESSLY APPROVED IN WRITING IN ADVANCE BY OWNER. THIS DOCUMENT SHALL BE RETURNED TO OWNER UPON REQUEST. IT MAY BE SUBJECT TO CERTAIN RESTRICTIONS UNDER APPLICABLE EXPORT CONTROL LAWS AND REGULATIONS.			DATE 08/09/2017	REFERENCE	MATERIAL
			mm DIMENSIONS IN [BRACKETS] ARE FOR REFERENCE ONLY	THIRD ANGLE PROJECTION	PROCESS/FINISH BLACK
				SIZE C	DRAWING NUMBER 71631429
					SHEET 2 OF 2