

PRODUCT INFORMATION PACKET

FASCO®

Model No: D144
Catalog No: D144
1/10 HP Ventilation Motor, 1050 RPM, 115 Volts, 42 Frame, OAO
Ventilation Motors



Regal and Fasco are trademarks of Regal Rexnord Corporation or one of its affiliated companies.
©2021 Regal Rexnord Corporation, All Rights Reserved. MC017097E

RegalRexnord



Nameplate Specifications

Output HP	1/10 Hp	Output KW	0.07 kW
Frequency	60 Hz	Voltage	115 V
Current	3.6 A	Speed	1050 rpm
Service Factor	1	Phase	1
Duty	Air Over	Insulation Class	A
Frame	42	Enclosure	Open Air Over
Thermal Protection	Thermally Protected	Ambient Temperature	40 °C
UL	Recognized	CSA	Y
CE	N	Number of Speeds	1

Technical Specifications

Electrical Type	Shaded Pole	Starting Method	Across The Line
Poles	6	Rotation	Clockwise Shaft End
Mounting	Extended Studs	Drive End Bearing	Sleeve
Opp Drive End Bearing	Sleeve	Frame Material	Na
Shaft Type	Flat	Overall Length	7.59 in
Shaft Diameter	0.500 in	Shaft Extension	4.50 in
Connection Drawing	NA	Outline Drawing	7151341919_S001

This is an uncontrolled document once printed or downloaded and is subject to change without notice. Date Created:11/10/2021

NOTES

1. THRU AIR SPACING BETWEEN WIRE AND METAL .10 MIN.
2. TIE BOLT TOLERANCE 7 - 12 IN. LBS.
3. FOR WASHER SET-UP, SEE CHART C600 0279, DETAIL "A".
4. LOCATE TOP LABEL, 6120 6085, ON OPPOSITE LEAD END COVER AT 0° TO READ RIGHT FROM LEAD END OF MOTOR.
5. SALES TO SPECIFY ON P.O. WHICH PACK TO USE.

ECO	REV.	DATE	SPEC/CHECK
630963	16	4-8-03	LDC/LDC
638283	17	06-18-08	GAE/GAE
639193	18	03-11-09	GAE/GAE
640153	19	07-20-09	GAE/GAE

A. SEE PACKAGING MANUAL PAGE 2 FOR PACKAGING PROCEDURE.

1 MOTOR/CARTON;
32 MOTORS/LAYER;
6 LAYERS/PALLET;
192 MOTORS/PALLET

B. SEE DRAWING 8785 6079 SH. 1 FOR PALLET LAYOUT.

C. CENTER LABEL, 6119 6428, ON END OF CARTON.

D. PLACE PAMPHLET, 6122 4579, IN CARTON WITH MOTOR.

71xx xxxxM

71xx xxxxC

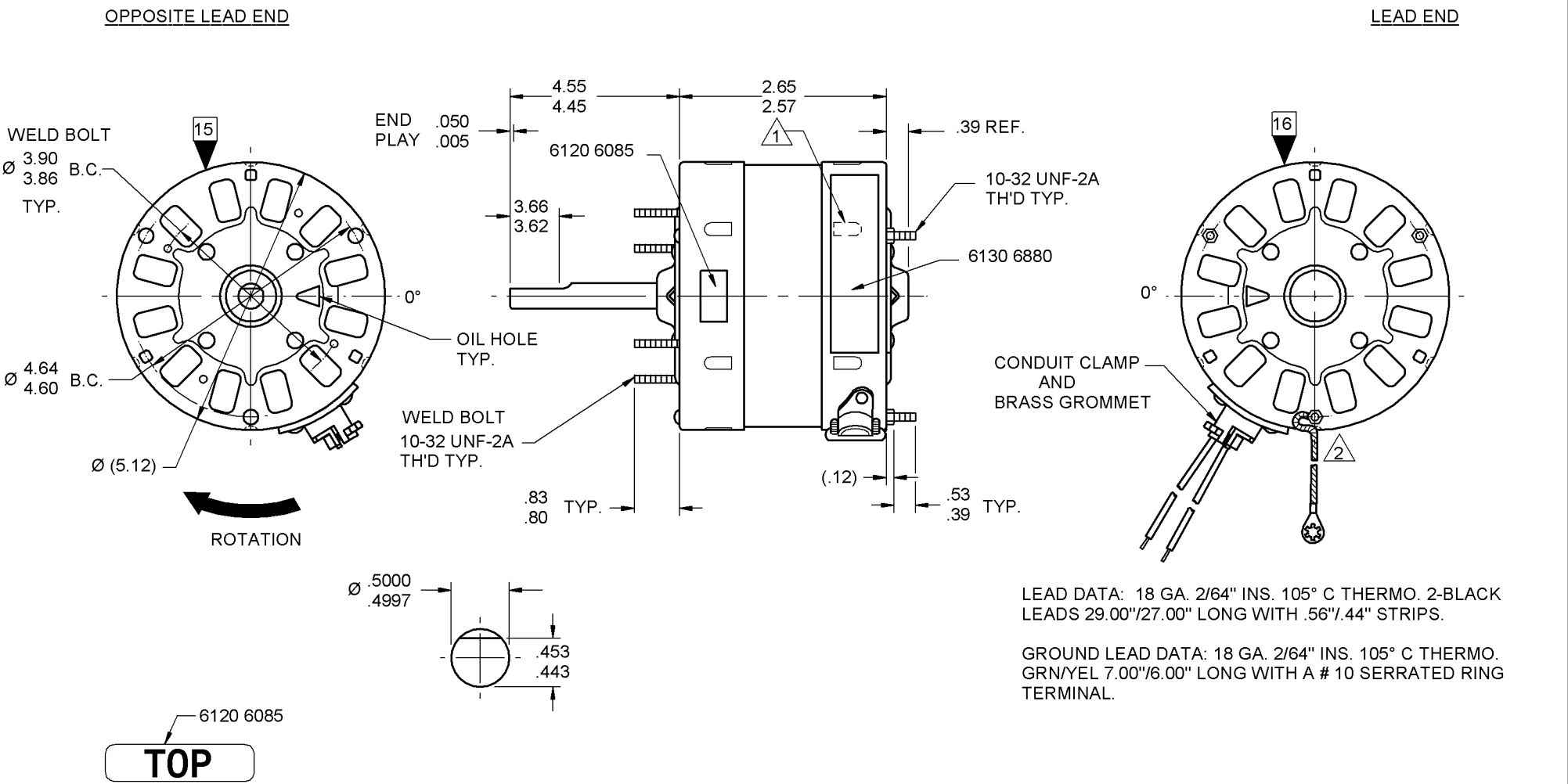
71xx xxxxZ

If Printed, this is an Uncontrolled Document.

PRODUCTION TEST AT IDLE 115 VOLTS 60 HZ		MOTOR SPEED	PERFORMANCE TEST 115 VOLTS 60 HZ 1 PH 1/10 HP											
AMP	WATT		IDLE				LOADED				LOCKED			BREAK
			RPM	AMP	WATT	OZ/IN	RPM	AMP	WATT	OZ/IN	AMP	WATT	OZ/IN	
3.30 — 2.70	177.1 — 144.9	HIGH	1177	3.0	161	95	1050	3.4	234	38	4.6	292	112	

HI-POT TEST 2000 VOLTS
MAX LEAKAGE CURRENT 5 mA

7151 3419 MA



SPECIAL INSTRUCTIONS: SHAFT IS BONDERIZED. Δ LANCE MUST BE COMPLETELY COVERED BY NAMEPLATE. PAMPHLET PACKED WITH MOTOR. ∇ GROUND TERMINAL MUST NOT EXTEND BEYOND MOTOR PERIPHERY.

MOTORS PACKED MAX. PER SKID: ___ PALLET PACK, 192 CARTON PACK, ___ TRAY PACK.

CUSTOMER: FASCO DISTRIBUTING CO.		PROPRIETARY: DO NOT DUPLICATE OR DISCLOSE TO THIRD PARTIES WITHOUT WRITTEN PERMISSION OF FASCO IND. INC., ELDON MO.	
PART NUMBER: D144		FASCO INDUSTRIES, INC. MOTOR DIVISION ELDON PLANT	
APPLICATION: DIST. SALES	MOTOR TYPE	MOTOR NUMBER	
FINISH COLOR: GRAY	SHADED POLE	7151 3419	
MOTOR WEIGHT: LBS.		M	
ENVIRONMENT: DRY		19	
INSULATION CLASS: A			

FASCO FASCO INDUSTRIES, INC. MOTOR DIVISION

V. 115 HZ 60 PH 1 TYPE U51 AO ROT ←

HP 1/10 AMP 3.6 RPM 1050 NO. 7151-3419

DATE/BAR CODE AREA PER 8882 6003

THERMALLY PROTECTED OSB

MODEL D144

SAFETY WARNING: THIS MOTOR MUST BE GROUNDED IN ACCORDANCE WITH LOCAL OR NATIONAL ELECTRICAL CODES TO PREVENT POSSIBLE INJURY DUE TO ELECTRICAL SHOCK

6130 6880,M REV. 8

LOCATE EDGE OF NAMEPLATE .05 FROM EDGE OF LEAD END COVER TO READ RIGHT FROM LEAD END OF MOTOR CENTER AT 20° CWL.

SIZE 4.00 X .75