

# PRODUCT INFORMATION PACKET

FASCO®

Model No: D209

Catalog No: D209

Fan and Blower Motor, 1/30 HP, 1 Ph, 60 Hz, 115 V, 3000 RPM, 1 Speed, 3.3" Diameter, OAO



Regal and Fasco are trademarks of Regal Rexnord Corporation or one of its affiliated companies.  
©2022 Regal Rexnord Corporation, All Rights Reserved. MC017097E

RegalRexnord



**Nameplate Specifications**

Output HP	1/30 Hp	Output KW	0.02 kW
Frequency	60 Hz	Voltage	115 V
Current	1.12 A	Speed	3000 rpm
Service Factor	1	Phase	1
Duty	Air Over	Insulation Class	B
Frame	3.3	Enclosure	Open Air Over
Thermal Protection	Thermally Protected	Ambient Temperature	40 °C
UL	Recognized	CSA	Y
CE	N	Number of Speeds	1

**Technical Specifications**

Electrical Type	Shaded Pole	Starting Method	Across The Line
Poles	2	Rotation	Clockwise Shaft End
Mounting	Extended Studs	Drive End Bearing	Sleeve
Opp Drive End Bearing	Sleeve	Frame Material	Steel
Shaft Type	Flat	Overall Length	10.20 in
Frame Length	3.40 in	Shaft Diameter	0.250 in
Shaft Extension	2.50 in		
Outline Drawing	71213273	Connection Drawing	NA

This is an uncontrolled document once printed or downloaded and is subject to change without notice. Date Created:11/28/2022

4

3

2

1

D

D

C

C

B

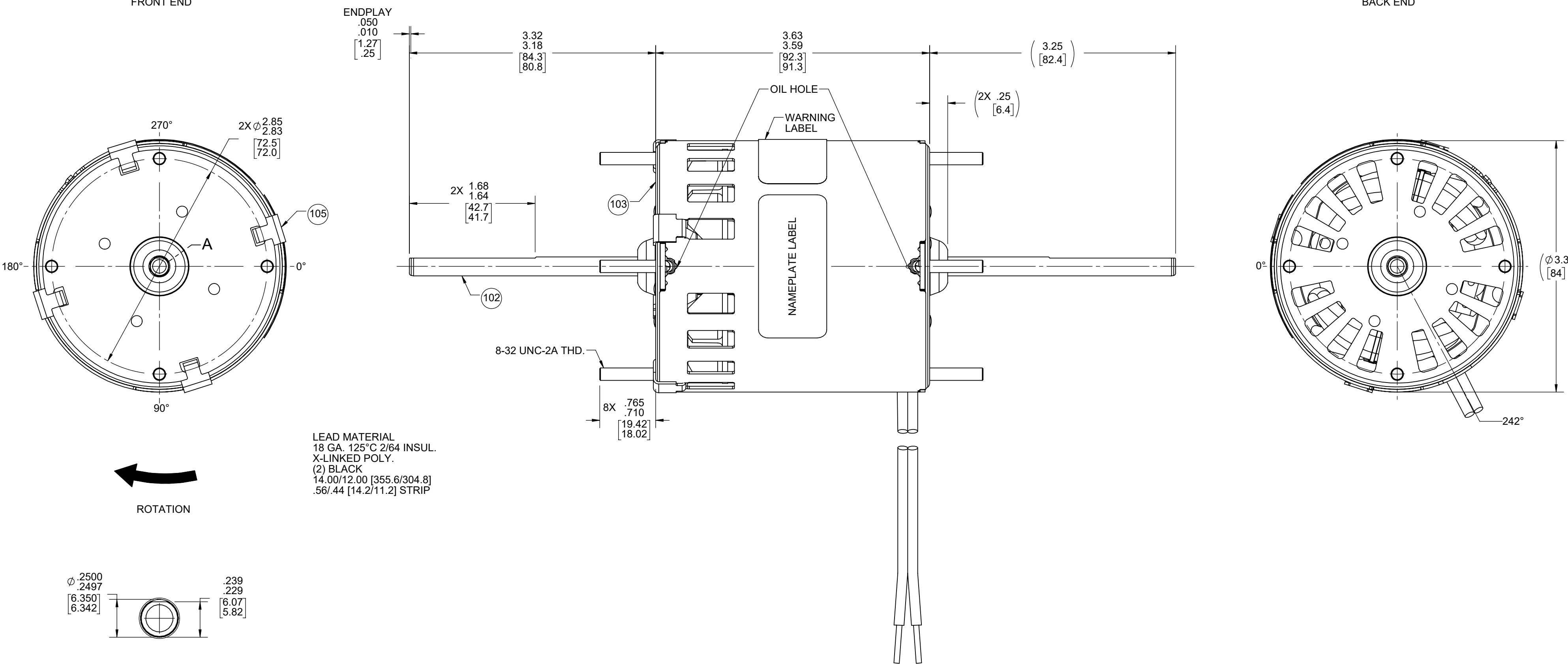
B

A

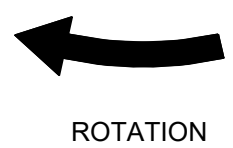
A

FRONT END

BACK END



LEAD MATERIAL  
18 GA. 125°C 2/64 INSUL.  
X-LINKED POLY.  
(2) BLACK  
14.00/12.00 [355.6/304.8]  
.56/.44 [14.2/11.2] STRIP



DETAIL A  
SHAFT

NOTES:  
1. NO PACKAGING TAPE OVER CARTON LABEL.

**SAFETY WARNING**  
This motor must be grounded in accordance with local or national electrical codes to prevent possible injury due to electrical shock

**AVERTISSEMENT DE SÉCURITÉ**  
Ce moteur doit être fondée sur conformément à la réglementation locale ou national électrique codes pour prévenir d'éventuelles blessures en raison de choc électrique

00464071

**FASCO™**

Assembled In Mexico  
No. 71213273 TYPE U21 T.P. AO  
115 V 60 Hz  
1.12 A 3000 RPM 1/30 HP  
Model D209 Max Amb: 40°C  
LR6319

CUSTOMER:	FASCO DIST.	APPLICATION:	COUNTER SALES								
CUSTOMER PN:	D209	MOTOR WEIGHT:	2.8 LBS.								
		ENVIRONMENT:	DRY								
HORIZONTAL	UP	MOTOR TYPE					REFERENCE SAMPLE				
		SHADED POLE									
		B	LA	FR	A	S	C	E	B	A	
		00	21	30	F	04	OC	5	1	0	
TYPICAL PERFORMANCE AT 115 VOLTS 60 HZ											
MOTOR SPEED	IDLE			LOADED			LOCKED			BREAK	
	RPM	AMP	WATT	IN OZ	RPM	AMP	WATT	IN OZ	AMP	WATT	IN OZ
	3450	1.02	64	10.0	3050	1.2	92	4.5	1.52	122	14.0
<p>61305568</p> <p>61299553</p>											

DRAWING REVISION AC	REVISION BY MLS	REV DATE/DATE 4/22/2022	TOLERANCES (EXCEPT AS NOTED): DEC. INCH mm ANGLE	DRAWN BY MLS		Regal Beloit America, Inc.
REQUEST NUMBER ECR-0217214	APPROVED BY KBB	DATE 4/22/2022	.X ±0.1 [±3] ±1° .XX ±0.01 [±0.3] .XXX ±0.005 [±0.13] .XXXX ±0.0005 [±0.013]	DATE 7/17/2019		
REQUEST NUMBER DESCRIPTION UPDATED FASCO LOGO			REMOVE BURRS & BREAK SHARP EDGES: .003/.015 [08/.38] X 45° CORNER FILLETS: R.02 [5] MACHINED SURFACES: .125/ mm 3.2 INCH mm	APPROVED BY SDM	DESCRIPTION OUTLINE MOTOR ASSY	
COPYRIGHT (PER REVISION DATE) REGAL BELOIT AMERICA, INC. ALL RIGHTS RESERVED. PROPRIETARY AND CONFIDENTIAL INFORMATION - THIS DOCUMENT IS THE PROPERTY OF REGAL BELOIT AMERICA, INC. ("OWNER") AND CONTAINS OWNER'S PROPRIETARY INFORMATION. ANY PERSON, CORPORATION OR OTHER FIRM RECEIVING IT IS DEEMED, BY RECEIVING IT, TO AGREE THAT IT, AND/OR ANY PART OF IT, SHALL NOT BE DISCLOSED TO ANY PERSON, CORPORATION OR OTHER ENTITY, DUPLICATED, AND/OR USED, EXCEPT AS EXPRESSLY APPROVED IN WRITING IN ADVANCE BY OWNER. THIS DOCUMENT SHALL BE RETURNED TO OWNER UPON REQUEST. IT MAY BE SUBJECT TO CERTAIN RESTRICTIONS UNDER APPLICABLE EXPORT CONTROL LAWS AND REGULATIONS.			mm DIMENSIONS IN [BRACKETS] ARE FOR REFERENCE ONLY	DATE 7/17/2019	MATERIAL BLACK	PROCESS/FINISH BLACK
			THIRD ANGLE PROJECTION	SIZE C	DRAWING NUMBER 71213273	SHEET 1 OF 2

4

3

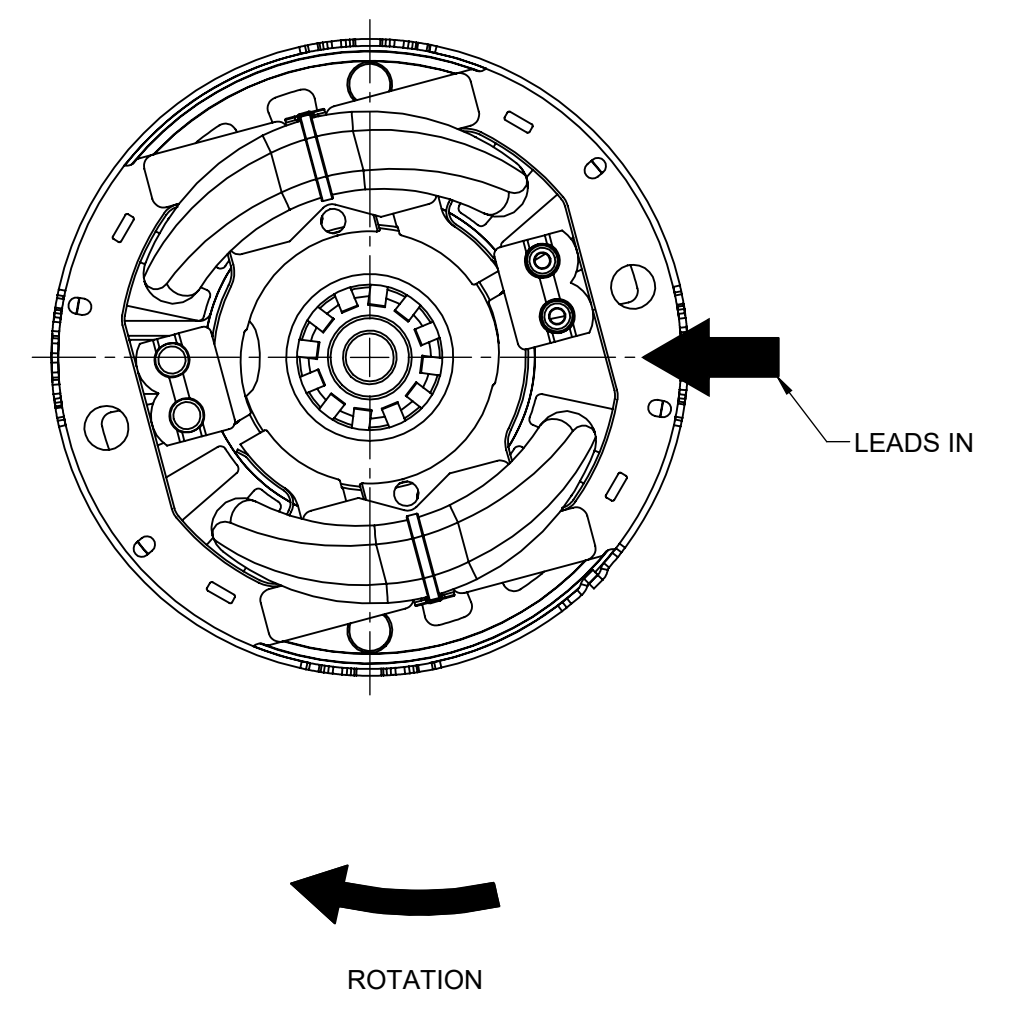
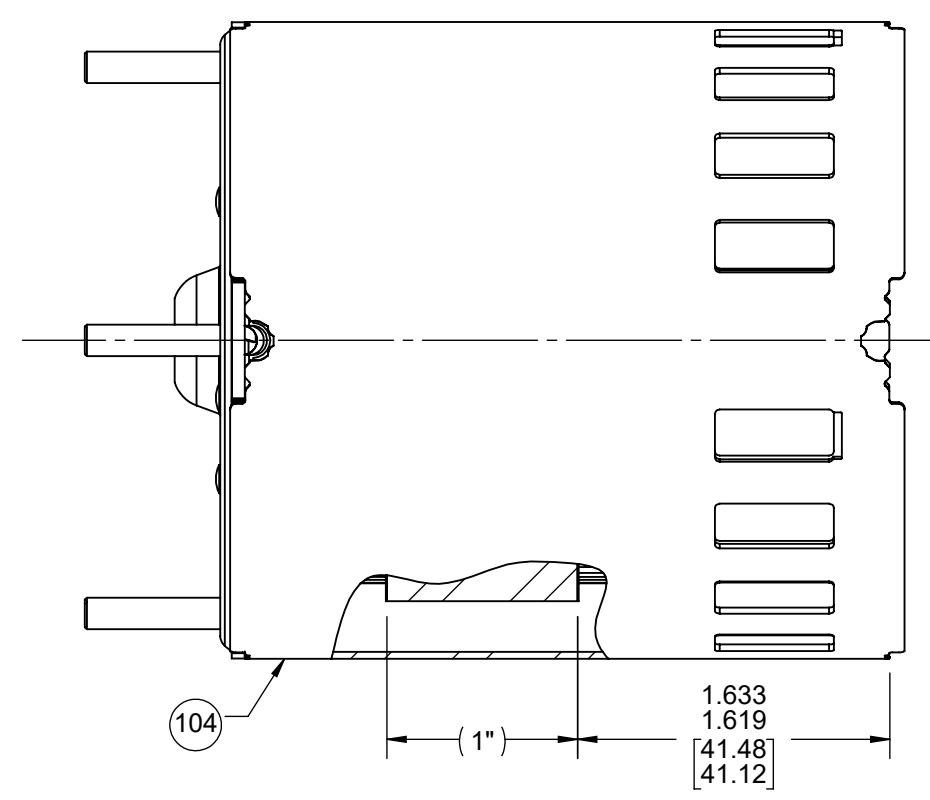
2

1

NOTES:  
 1. ALL SPACING THRU AIR BETWEEN WIRE AND METAL MUST BE AT LEAST: .063 [1.60].

BACK END

FRONT END



**PACKING SPECIFICATIONS**

1. PACK 1 PER CONTAINER, 36 CONTAINERS PER LAYER, 8 LAYERS PER PALLET, 288 MAX. PER PALLET, PACKING ASSY. 87854000, PER 88834200 AND 88834408.
2. CARTON LABELS MUST ALL FACE ONE DIRECTION TOWARD THE OPEN END OF THE PALLET. SEE 88834408.

DRAWING REVISION AC	REVISION BY MLS	REV DATE/DATE 4/22/2022	TOLERANCES (EXCEPT AS NOTED):				DRAWN BY MLS	Regal Beloit America, Inc.		
REQUEST NUMBER ECR-0217214	APPROVED BY KBB	DATE 4/22/2022	DEC.	INCH	mm	ANGLE	DATE 7/17/2019			
REQUEST NUMBER DESCRIPTION UPDATED FASCO LOGO			.X	±0.1	[±3]	±1°	APPROVED BY SDM	DESCRIPTION OUTLINE MOTOR ASSY		
COPYRIGHT (PER REVISION DATE) REGAL BELOIT AMERICA, INC. ALL RIGHTS RESERVED. PROPRIETARY AND CONFIDENTIAL INFORMATION - THIS DOCUMENT IS THE PROPERTY OF REGAL BELOIT AMERICA, INC. ("OWNER") AND CONTAINS OWNER'S PROPRIETARY INFORMATION. ANY PERSON, CORPORATION OR OTHER FIRM RECEIVING IT IS DEEMED, BY RECEIVING IT, TO AGREE THAT IT, AND/OR ANY PART OF IT, SHALL NOT BE DISCLOSED TO ANY PERSON, CORPORATION OR OTHER ENTITY, DUPLICATED, AND/OR USED, EXCEPT AS EXPRESSLY APPROVED IN WRITING IN ADVANCE BY OWNER. THIS DOCUMENT SHALL BE RETURNED TO OWNER UPON REQUEST. IT MAY BE SUBJECT TO CERTAIN RESTRICTIONS UNDER APPLICABLE EXPORT CONTROL LAWS AND REGULATIONS.			REMOVE BURRS & BREAK SHARP EDGES: .003/.015 [.08/.38] X 45°				DATE 7/17/2019	MATERIAL		
			CORNER FILLETS: R.02 [.5]				MACHINED SURFACES: .125/ mm 3.2/ INCH mm		REFERENCE	PROCESS/FINISH BLACK
			mm DIMENSIONS IN [BRACKETS] ARE FOR REFERENCE ONLY				THIRD ANGLE PROJECTION	SIZE C	DRAWING NUMBER 71213273	SHEET 2 OF 2

4

3

2

1