

PRODUCT INFORMATION PACKET

FASCO®

Model No: D219

Catalog No: D219

Fan and Blower Motor, 1/8 HP, 1 Ph, 60 Hz, 115 V, 3000 RPM, 1 Speed, 3.3" Diameter,
TOTALLY ENCLOSED AIR



Regal and Fasco are trademarks of Regal Rexnord Corporation or one of its affiliated companies.
©2025 Regal Rexnord Corporation, All Rights Reserved. MC017097E

RegalRexnord



Nameplate Specifications

Phase	1	Output HP	1/8 Hp
Output KW	0.10 kW	Voltage	115 V
Speed	3000 rpm	Service Factor	1
Frame	3.3	Enclosure	Totally Enclosed Air Over
Thermal Protection	Thermally Protected	Ambient Temperature	40 °C
Frequency	60 Hz	Current	1.8 A
Duty	Continuous Air Over	Insulation Class	B
UL	Recognized	CSA	Y
CE	N	Number of Speeds	1

Technical Specifications

Electrical Type	Permanent Split Capacitor	Starting Method	Across The Line
Poles	2	Rotation	Reversible
Mounting	Extended Studs	Drive End Bearing	Ball
Opp Drive End Bearing	Ball	Frame Material	Steel
Shaft Type	Flat	Overall Length	7.24 in
Frame Length	4.94 in	Shaft Diameter	0.312 in
Shaft Extension	2.3 in		
Connection Drawing	00469130	Outline Drawing	71622886

This is an uncontrolled document once printed or downloaded and is subject to change without notice. Date Created:02/10/2025

D

C

B

A

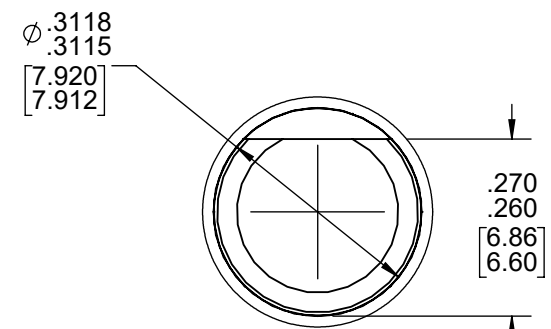
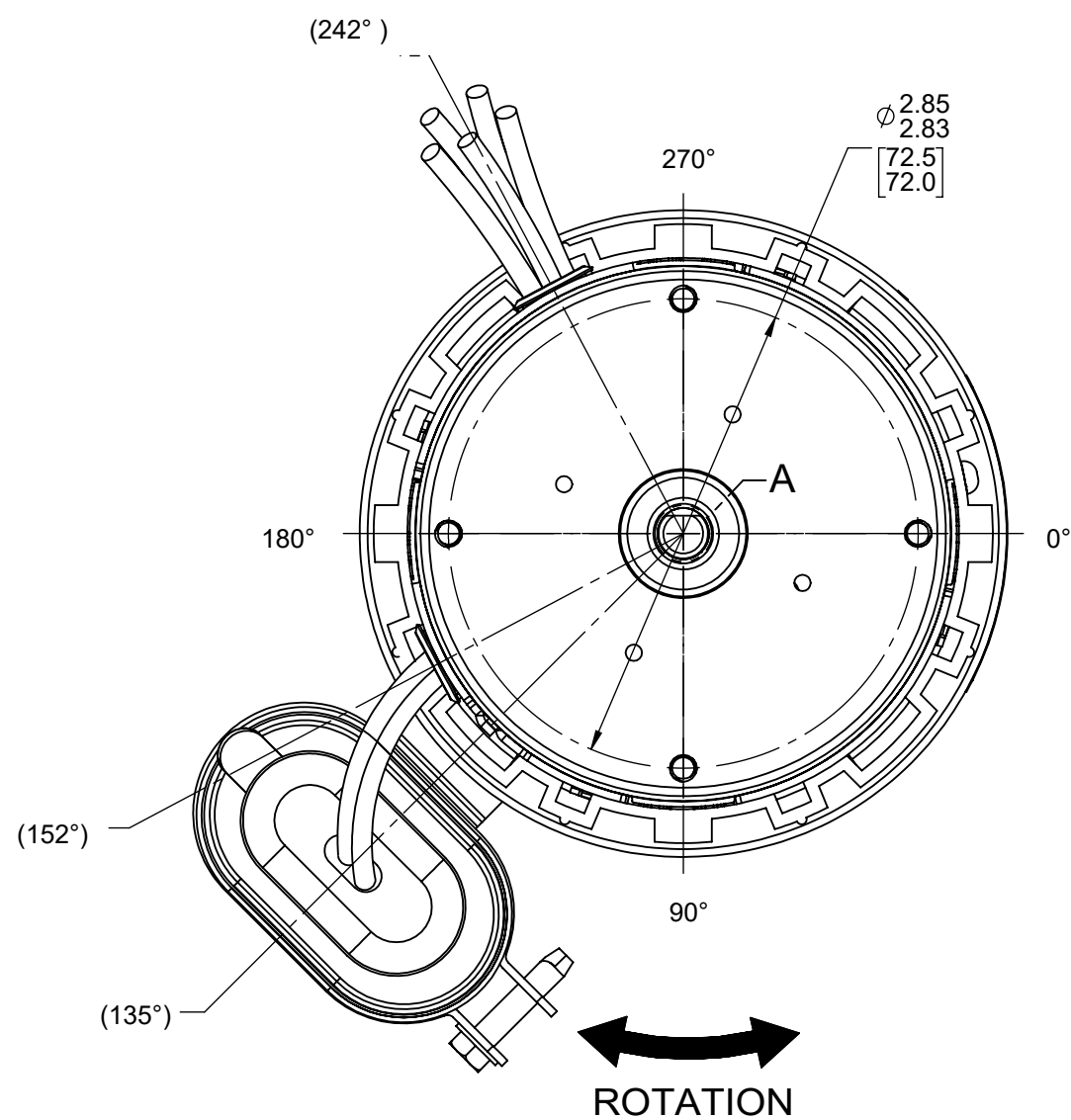
D

C

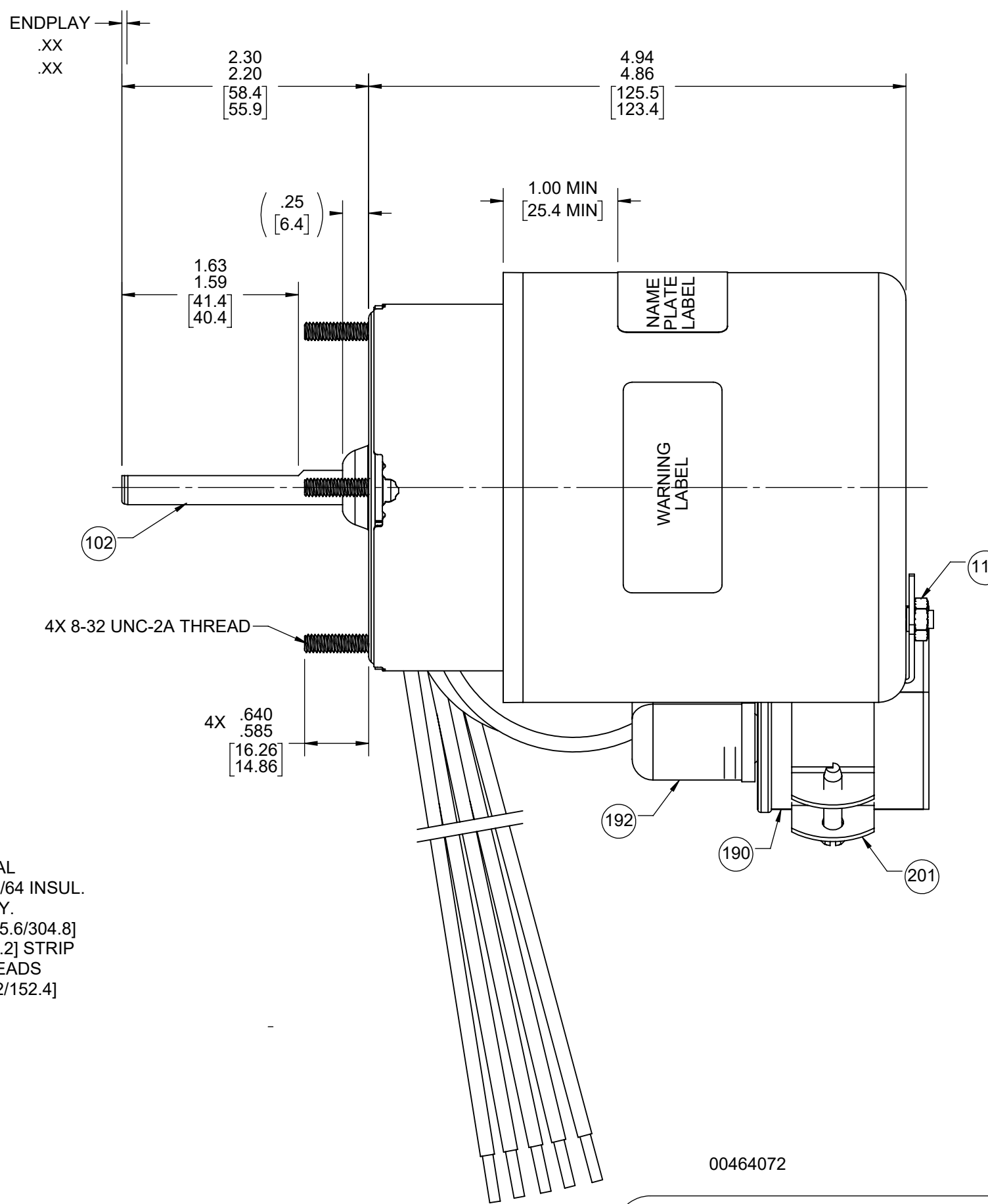
B

A

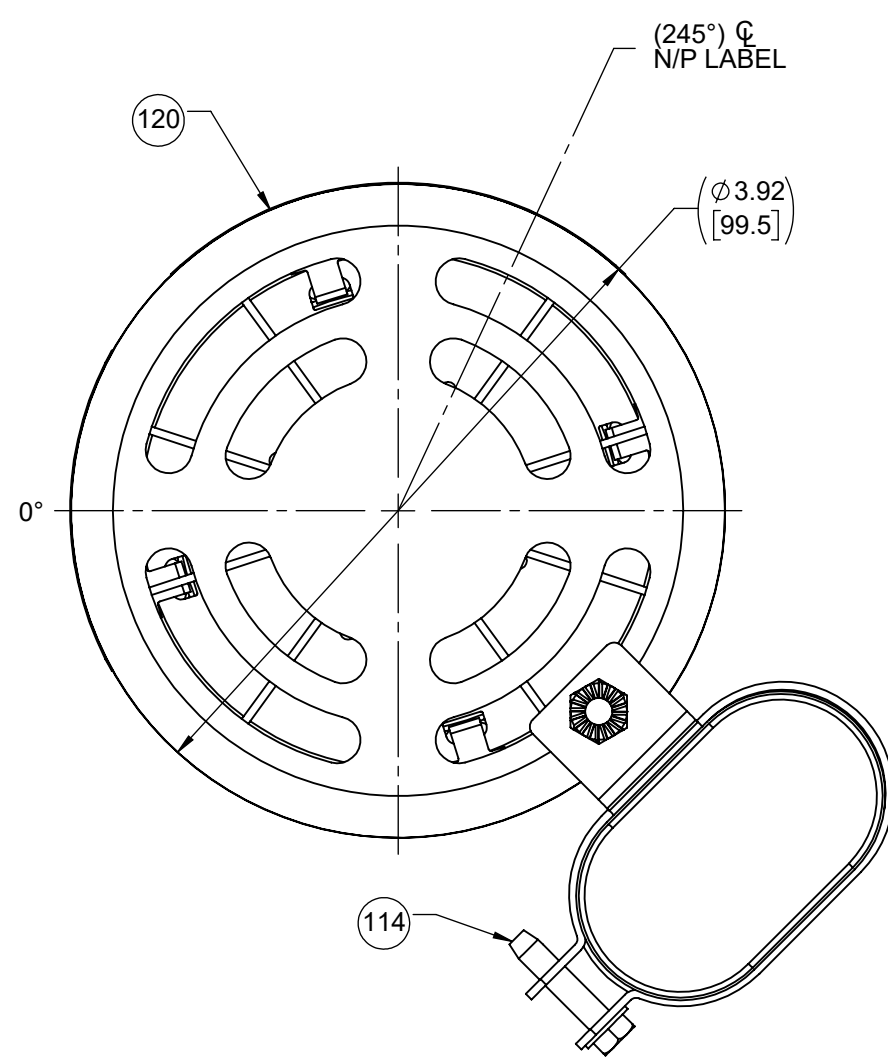
FRONT END



SHAFT DETAIL A



BACK END



LEAD MATERIAL
18 GA. 125°C 2/64 INSUL.
X-LINKED POLY.
14.00/12.00 [355.6/304.8]
.56/.44 [14.2/11.2] STRIP
CAPACITOR LEADS
8.00/6.00 [203.2/152.4]
FFLAG TERM.
AMP 42742-2

61305568

00464072

00469130

- NOTES:
1. NO PACKAGING TAPE OVER CARTON LABEL.

SAFETY WARNING
This motor must be grounded in accordance with local or national electrical codes to prevent possible injury due to electrical shock

AVERTISSEMENT DE SÉCURITÉ
Ce moteur doit être fondée sur conformément à la réglementation locale ou national électrique codes pour prévenir d'éventuelles blessures en raison de choc électrique

APPLY IN A CONVENIENT LOCATION TO READ FROM BACK END

FASCO™
Assembled in Mexico
No. 71622886 TYPE U62B1
115 V 60 Hz
1.8 A 3000 RPM
Model D219
Sealed Ball Brg
Thermally Protected

TEAO LR6319
Class B
1/8 HP
Max. Amb: 40°C

Connection Diagram
C.C.W.S.E. C.W.S.E.
Blk — Line Blk — Line
Wht — Line Wht — Line
Blu — Line Brn — Line
Brn — Line Blu — Line
Orn — Line Orn — Line
Yel — Line Yel — Line
Yel — Line Yel — Line

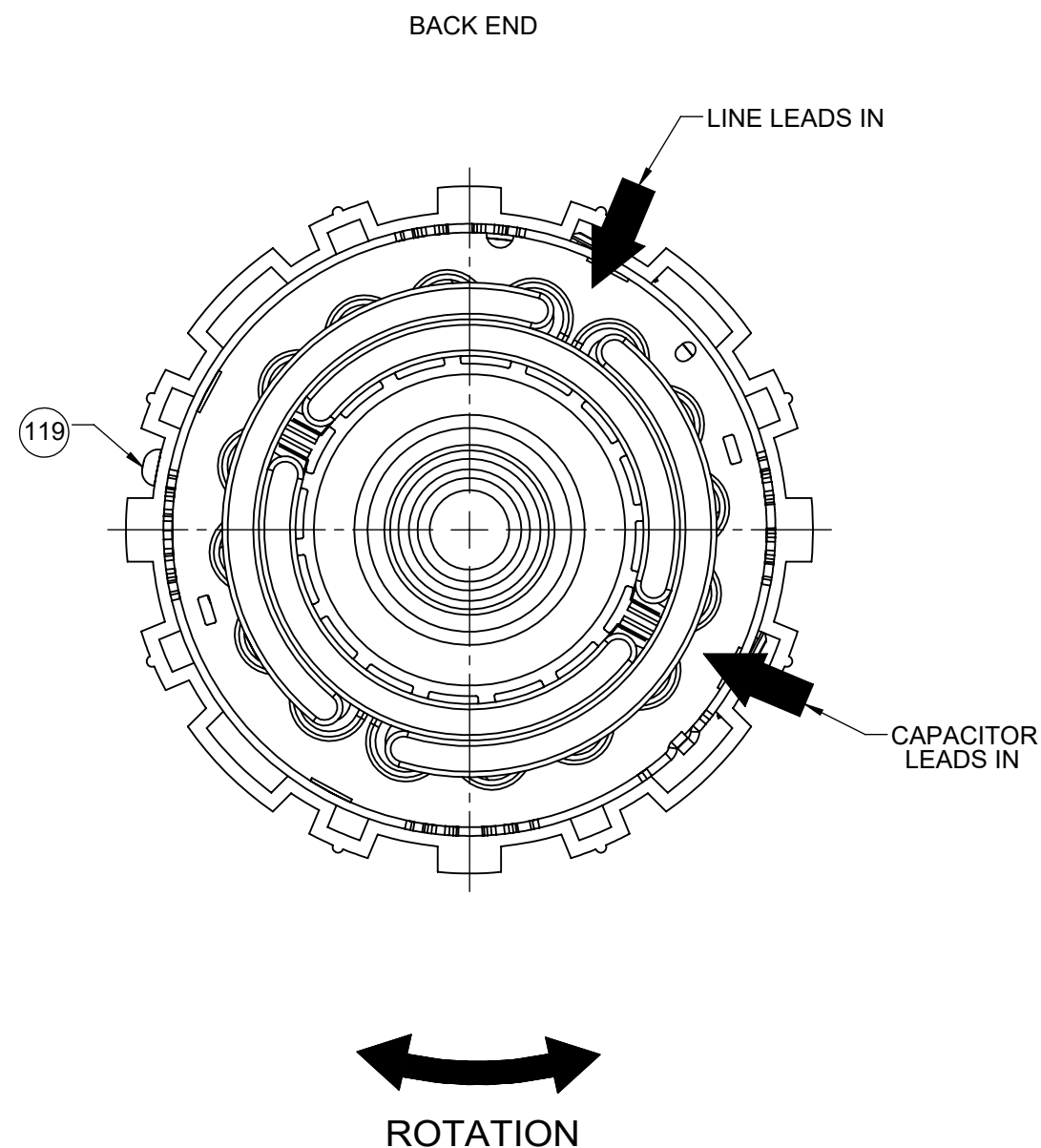
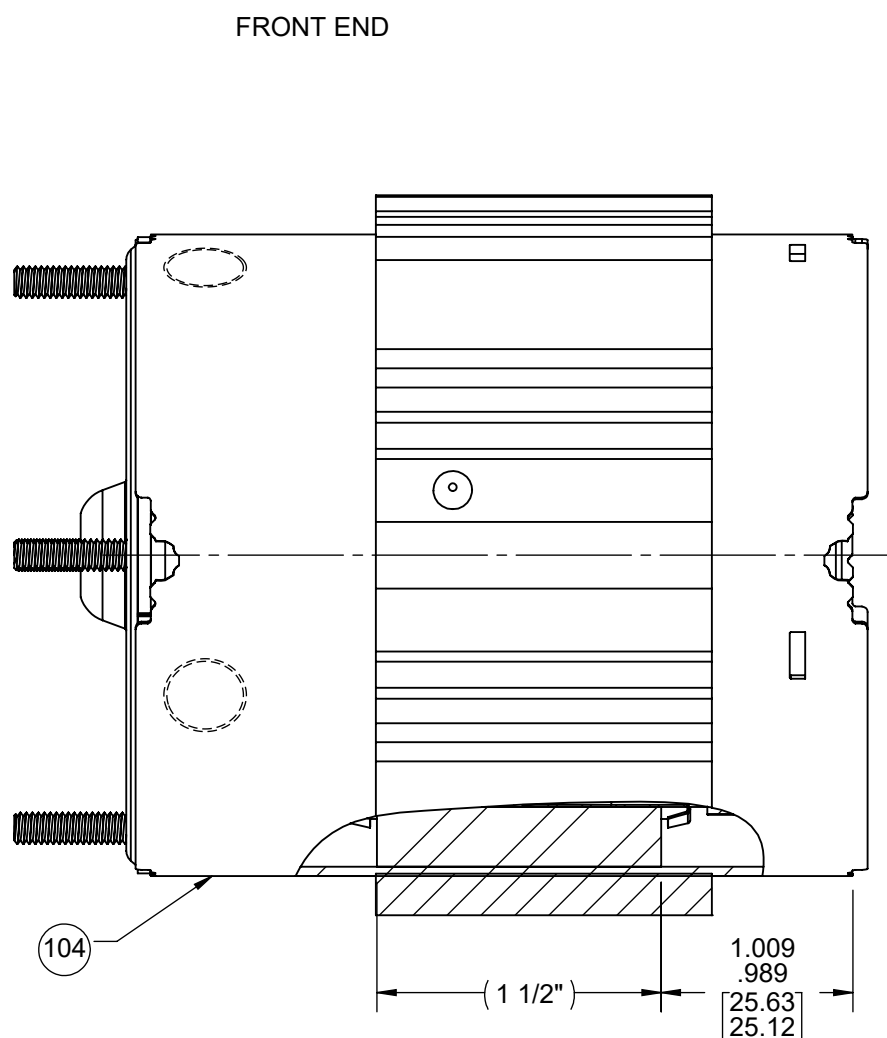
4 MFD/370 VAC

CUSTOMER:	FASCO DIST.	APPLICATION:			
CUSTOMER PN:	D219	MOTOR WEIGHT:	4.47 LBS.		
		ENVIRONMENT:	DRY		
MOTOR TYPE		REFERENCE SAMPLE			
P.S.C.		71902084			
B	LA	FR	A		
00	62	28	T		
S			06		
C			OT		
E			5		
B			0		
A			0		
TYPICAL PERFORMANCE AT 115 VOLTS 60 HZ					
CAP: 4 MFD/370 VAC					
MOTOR SPEED	IDLE		LOADED		BREAK
	RPM	WATT	IN OZ	WATT	
3560	.80	60	40.0	3200	1.80
				190	11.0
				3.00	290
					46.0

DRAWING REVISION WC	REVISION BY GJ	REV DATE/© DATE 09/08/2023	TOLERANCES (EXCEPT AS NOTED): DEC. INCH mm ANGLE .X ±0.1 [±3] ±1° .XX ±0.01 [±0.3] .XXX ±0.005 [±0.13] .XXXX ±0.0005 [±0.013]	DRAWN BY J.TINDLE	Regal Rexnord Regal Beloit America, Inc.
REQUEST NUMBER ECR-0227937	APPROVED BY JMG	DATE 09/08/2023	REMOVE BURRS & BREAK SHARP EDGES: .003/.015 [.08/.38] X 45° CORNER FILLETS: R.02 [5] MACHINED SURFACES: .125/ mm 3.2 INCH/mm mm DIMENSIONS IN [BRACKETS] ARE FOR REFERENCE ONLY	DATE 04-17-2002	
REQUEST NUMBER DESCRIPTION ATTACHED MODEL TO PRINT				APPROVED BY	DESCRIPTION OUTLINE MOTOR ASSY
COPYRIGHT (PER REVISION DATE) REGAL BELOIT AMERICA, INC. ALL RIGHTS RESERVED. PROPRIETARY AND CONFIDENTIAL INFORMATION - THIS DOCUMENT IS THE PROPERTY OF REGAL BELOIT AMERICA, INC. (OWNER) AND CONTAINS OWNER'S PROPRIETARY INFORMATION. ANY PERSON, CORPORATION OR OTHER FIRM RECEIVING IT IS DEEMED, BY RECEIVING IT, TO AGREE THAT IT, AND/OR ANY PART OF IT, SHALL NOT BE DISCLOSED TO ANY PERSON, CORPORATION OR OTHER ENTITY, DUPLICATED, AND/OR USED, EXCEPT AS EXPRESSLY APPROVED IN WRITING IN ADVANCE BY OWNER. THIS DOCUMENT SHALL BE RETURNED TO OWNER UPON REQUEST. IT MAY BE SUBJECT TO CERTAIN RESTRICTIONS UNDER APPLICABLE EXPORT CONTROL LAWS AND REGULATIONS.				REFERENCE	MATERIAL PROCESS/FINISH BLACK
THIRD ANGLE PROJECTION	SIZE C	DRAWING NUMBER 71622886		SHEET 1 OF 2	

NOTES:

- 1. MAXIMUM TORQUE REQUIRED TO TURN MOTOR SHAFT IS 3/8 INCH-OUNCE.
- 2. ASSEMBLE SPRING BETWEEN WASHER AND BEARING ON BACK END, WITH SPRING FINGERS TOWARDS BEARING.
- 3. ASSEMBLE BALL BEARINGS TO BEARING RETAINERS PER 88834419.
- 4. ATTACHED TERMINALS MUST MEET SPECIFICATIONS ON 88834229.
- 5. CUT YELLOW CAPACITOR LEADS TO LENGTH, STRIP TO .31 ±.03 [7.9 ± .8] AND ASSEMBLE TERMINALS IN FINAL.
- 6. ASSEMBLE LOCK WASHER BETWEEN CAPACITOR BRACKET AND COOLING CASE.



BLAST COOLED SPECIFICATIONS

- 1. FAN MUST TRACK WITHIN .035 [.89] AND HAVE .10 [2.5] MIN. CLEARANCE TO BEARING BOSS AFTER PRESS ON OPERATION.
- 2. DIMENSION OVER END FRAMES 3.93/3.89 [99.8/98.8].
- 3. DRILL PILOT HOLE WITH A #37 DRILL .300/.275 [7.62/6.99] DEEP AT CENTER OF DRILL AND PIN COOLING BAND SECURELY TO STATOR AND MAIN FRAME ASSY, (2) PLACES 180° APART.
- 4. ASSEMBLE FAN COVER PER 88834269.

PACKING SPECIFICATIONS

- 1. PACK 1 PER CONTAINER, 25 CONTAINERS PER LAYER, 6 LAYERS PER PALLET, 150 MAX. PER PALLET, PER 88834200.
- 2. PLACE MOTOR IN CARTON SHAFT END UP. PLACE FILLER TUBE OVER SHAFT. STUFF PAPER AROUND MOTOR TO PREVENT MOVEMENT DURING SHIPMENT. CLOSE FLAPS AND TAPE.
- 3. PLACE (1) FLAT PAD ON PALLET, (1) BETWEEN EACH LAYER, AND (1) ON TOP. PLACE ALL INSPECTION STICKERS AND WRITING ON THE TOP FLAT PAD TO PREVENT MARKING ON CARTONS PRIOR TO STRETCH WRAPPING.
- 4. CARTON LABELS MUST ALL FACE ONE DIRECTION TOWARD THE OPEN END OF THE PALLET. SEE 88834408.

DRAWING REVISION WC	REVISION BY GJ	REV DATE/© DATE 09/08/2023	TOLERANCES (EXCEPT AS NOTED): DEC. INCH mm ANGLE	DRAWN BY J.TINDLE	Regal Rexnord Regal Beloit America, Inc.
REQUEST NUMBER ECR-0227937	APPROVED BY JMG	DATE 09/08/2023	.X ±0.1 [±3] ±1° .XX ±0.01 [±0.3] .XXX ±0.005 [±0.13] .XXXX ±0.0005 [±0.013]	DATE 04-17-2002	
REQUEST NUMBER DESCRIPTION ATTACHED MODEL TO PRINT			REMOVE BURRS & BREAK SHARP EDGES: .003/.015 [.08/.38] X 45° CORNER FILLETS: R.02 [.5] MACHINED SURFACES: .125/ mm 3.2 INCH/mm	APPROVED BY	DESCRIPTION OUTLINE MOTOR ASSY
COPYRIGHT (PER REVISION DATE) REGAL BELOIT AMERICA, INC. ALL RIGHTS RESERVED. PROPRIETARY AND CONFIDENTIAL INFORMATION - THIS DOCUMENT IS THE PROPERTY OF REGAL BELOIT AMERICA, INC. ("OWNER") AND CONTAINS OWNER'S PROPRIETARY INFORMATION. ANY PERSON, CORPORATION OR OTHER FIRM RECEIVING IT IS DEEMED, BY RECEIVING IT, TO AGREE THAT IT, AND/OR ANY PART OF IT, SHALL NOT BE DISCLOSED TO ANY PERSON, CORPORATION OR OTHER ENTITY, DUPLICATED, AND/OR USED, EXCEPT AS EXPRESSLY APPROVED IN WRITING IN ADVANCE BY OWNER. THIS DOCUMENT SHALL BE RETURNED TO OWNER UPON REQUEST. IT MAY BE SUBJECT TO CERTAIN RESTRICTIONS UNDER APPLICABLE EXPORT CONTROL LAWS AND REGULATIONS.			mm DIMENSIONS IN [BRACKETS] ARE FOR REFERENCE ONLY	DATE	MATERIAL
				REFERENCE	PROCESS/FINISH BLACK
				THIRD ANGLE PROJECTION	SIZE C DRAWING NUMBER 71622886 SHEET 2 OF 2