

PRODUCT INFORMATION PACKET

FASCO®

Model No: D455

Catalog No: D455

OEM Replacement Motor, 1/30 HP, 1 Ph, 60 Hz, 115/230 V, 3000 RPM, 1 Speed, 3.3" Diameter, OAO



Regal and Fasco are trademarks of Regal Rexnord Corporation or one of its affiliated companies.
©2022 Regal Rexnord Corporation, All Rights Reserved. MC017097E

RegalRexnord



Nameplate Specifications

Output HP	1/30 Hp	Output KW	0.02 kW
Frequency	60 Hz	Voltage	115/230 V
Current	1.3/.65 A	Speed	3000 rpm
Phase	1	Duty	Air Over
Insulation Class	B	Frame	3.3
Enclosure	Open Air Over	Thermal Protection	Thermally Protected
Ambient Temperature	40 °C	UL	Recognized
CSA	Y	CE	N
Number of Speeds	1		

Technical Specifications

Electrical Type	Shaded Pole	Starting Method	Across The Line
Poles	2	Rotation	Counterclockwise Shaft End
Mounting	Extended Studs	Drive End Bearing	Ball
Opp Drive End Bearing	Ball	Frame Material	Steel
Shaft Type	Flat	Overall Length	9.78 in
Frame Length	3.53 in	Shaft Diameter	0.250 in
Shaft Extension	3.8 in		
Outline Drawing	71216355	Connection Drawing	SEE OUTLINE

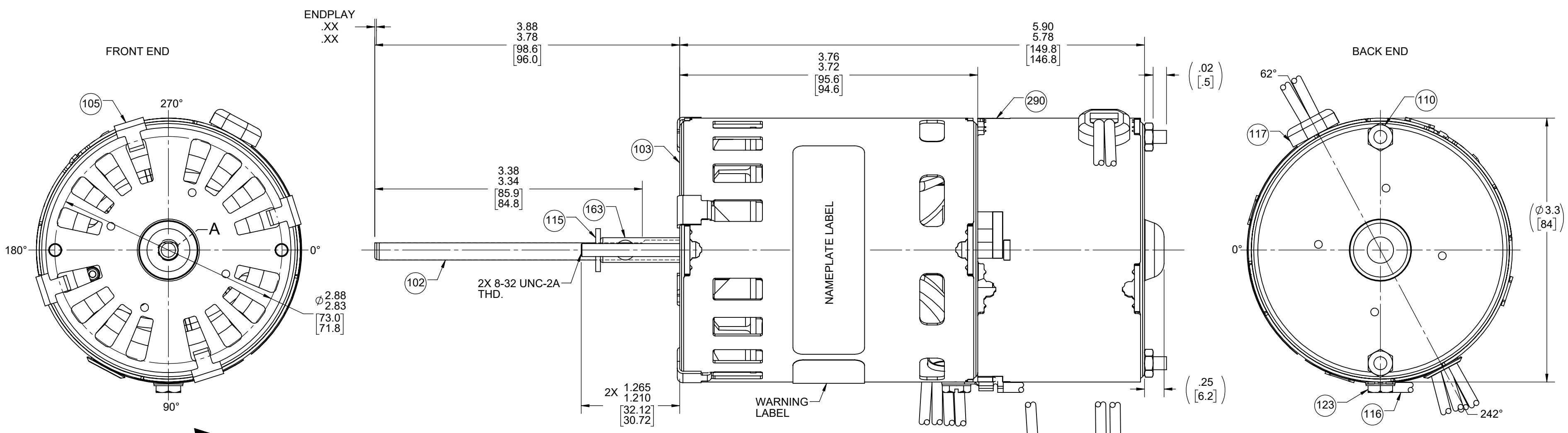
This is an uncontrolled document once printed or downloaded and is subject to change without notice. Date Created:11/29/2022

4

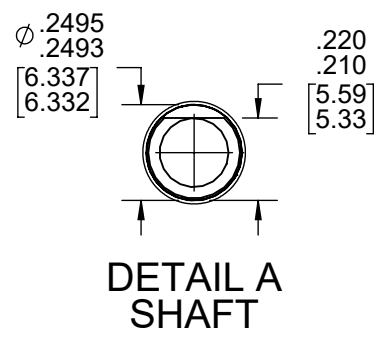
3

2

1



ROTATION



LEAD MATERIAL
18 GA. 125°C 2/64 INSUL. X-LINKED POLY, (1) BLACK, (1) WHITE, (1) RED, AND (1) BLUE
34.00/32.00 [863.6/812.8] .86/.74 [21.8/18.8] STRIP

GROUND LEAD
18 GA. 105°C 2/64 INSUL. THERMO. GRN/YEL
14.00/12.00 [355.6/304.8] .56/.44 [14.2/11.2] STRIP

SWITCH LEAD
18 GA. 105°C 4/64 INSUL. THERMO. (2) ORANGE
34.00/32.00 [863.6/812.8] .86/.74 [21.8/18.8] STRIP

NOTES:
1. NO PACKAGING TAPE OVER CARTON LABEL.

CUSTOMER:	FASCO DIST.	APPLICATION:	FLUE EXHAUST				
CUSTOMER PN:	D455	MOTOR WEIGHT:	3 LBS.				
		ENVIRONMENT:	DRY				
MOTOR TYPE		REFERENCE SAMPLE					
SHADED POLE							
B	LA	FR	A				
00	21	34	F				
S		C					
02		GN					
E		B					
9		0					
A		A					
0		0					
TYPICAL PERFORMANCE AT 115/230 VOLTS 60 HZ							
MOTOR SPEED	IDLE		LOADED		LOCKED		BREAK
	RPM	WATT	IN OZ	RPM	WATT	IN OZ	IN OZ
115 V	3439	1.15	72	3000	1.37	103	3.5
230 V	3418	.53	71	3000	.64	100	3.5

61305568

SAFETY WARNING
This motor must be grounded in accordance with local or national electrical codes to prevent possible injury due to electrical shock

AVERTISSEMENT DE SÉCURITÉ
Ce moteur doit être fondée sur conformément à la réglementation locale ou nationale électrique codes pour prévenir d'éventuelles blessures en raison de choc électrique

00464072

FASCO™

Assembled In Mexico
No. 71216355 TYPE U21B T.P. AO
115/230 V 60 Hz Class B

1.3/.65 A 3000 RPM 1/30 HP
Sealed Ball Brg LR6319 Max Amb: 40°C
SW280-10

SW125VA-120V

Connection Diagram

115 V 230 V
Wht Line Wht Line
Blk Line Blk Line
Red Line Blk Ins
Blu Line Red Line

Orn Grm/Yel Grd

61299553

00464188

DRAWING REVISION AC	REVISION BY SDM	REV DATE/© DATE 4/26/2022	TOLERANCES (EXCEPT AS NOTED): DEC. INCH mm ANGLE .X ±0.1 [±3] ±1° .XX ±0.01 [±0.3] .XXX ±0.005 [±0.13] .XXXX ±0.0005 [±0.013]	DRAWN BY MLS	Regal Rexnord Regal Beloit America, Inc.
REQUEST NUMBER ECR-0217276	APPROVED BY MLS	DATE 4/26/2022	REMOVE BURRS & BREAK SHARP EDGES: .003/.015 [.08/.38] X 45° CORNER FILLETS: R.02 [.5] MACHINED SURFACES: .125/ mm 3.2/ INCH mm 3.2/ mm DIMENSIONS IN [BRACKETS] ARE FOR REFERENCE ONLY	DATE 9/23/2019	
REQUEST NUMBER DESCRIPTION CHANGE N/P FASCO LOGO TO FASCO TM			DATE 9/23/2019	APPROVED BY SED	DESCRIPTION OUTLINE MOTOR ASSY
THIRD ANGLE PROJECTION			SIZE C	DRAWING NUMBER 71216355	PROCESS/FINISH BLACK
				SHEET 1 OF 2	

4

3

2

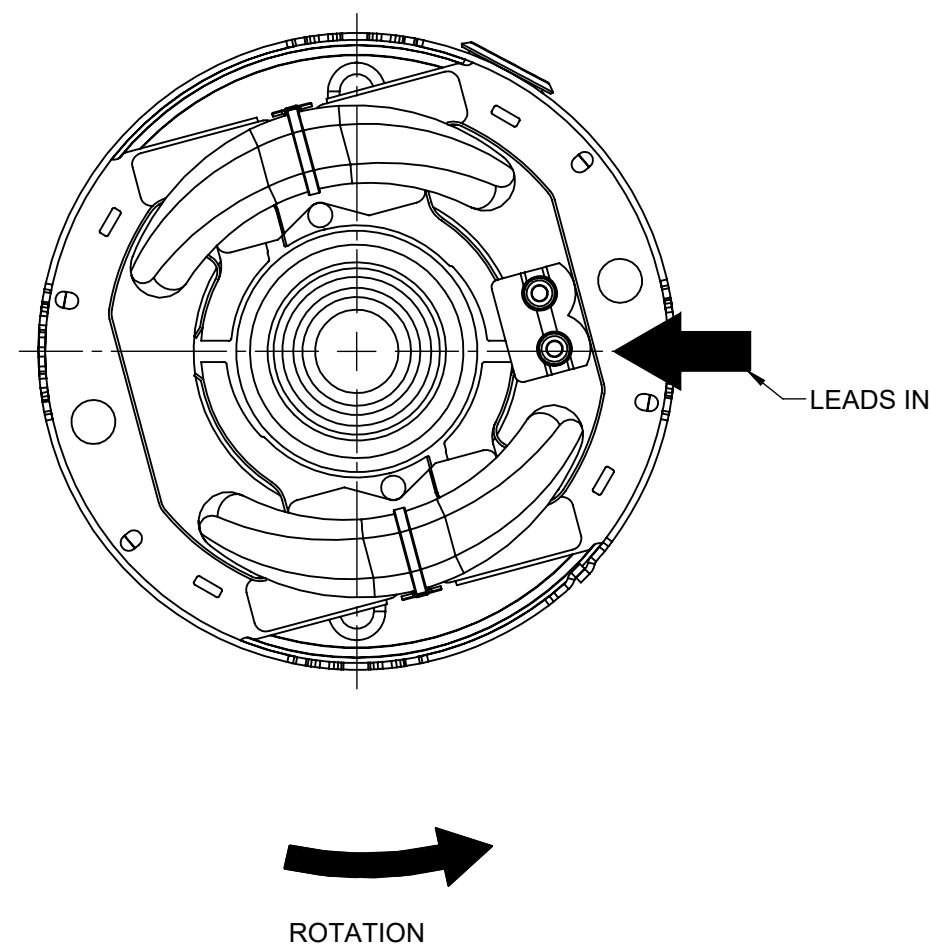
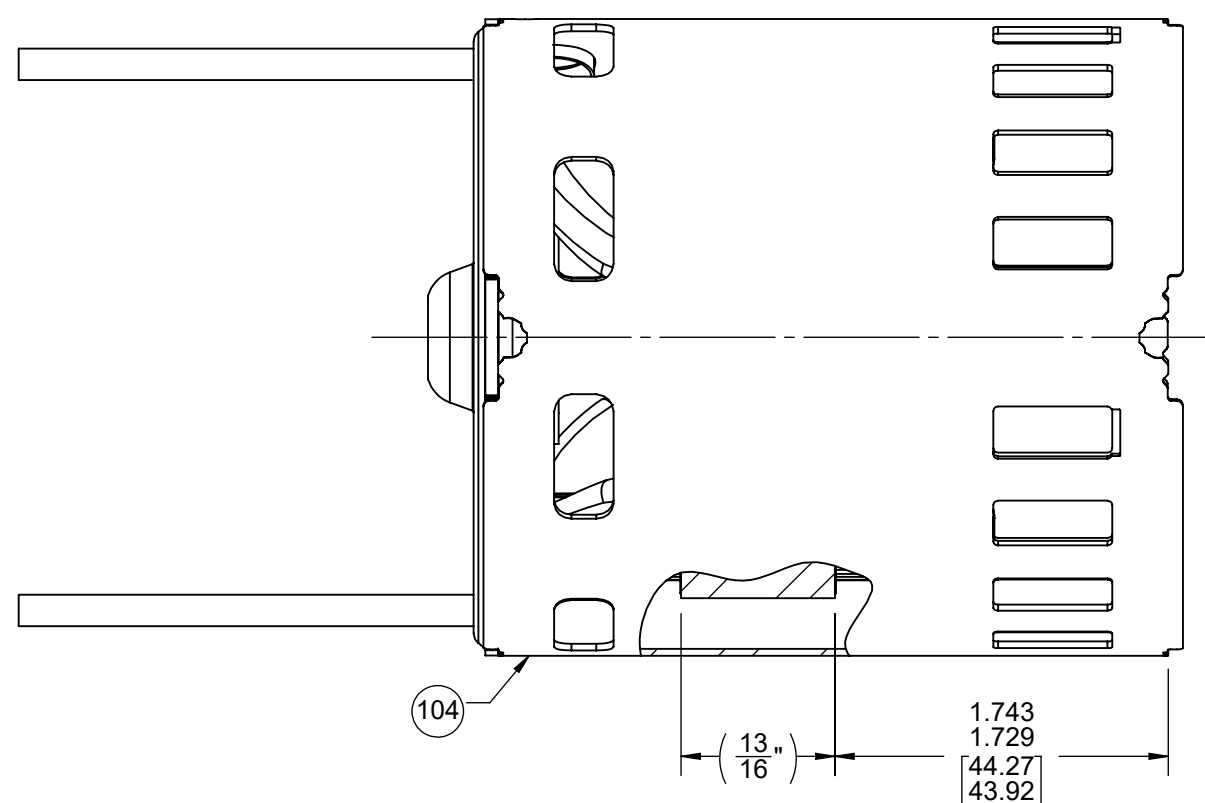
1

NOTES:

1. ALL SPACING THRU AIR BETWEEN WIRE AND METAL MUST BE AT LEAST .094 [2.39].
2. ASSEMBLE LOADING SPRING BETWEEN WASHER AND BEARING ON BACK END WITH SPRING FINGERS TOWARD BEARING.
3. ASSEMBLE BALL BEARINGS TO BEARING RETAINERS PER 88834419.
4. ASSEMBLE PC 163 BUSHING ON SHAFT, THEN ASSEMBLE PC 115 OIL SLINGER TO SECURE BUSHING.

BACK END

FRONT END



SWITCH INSTRUCTIONS

1. ASSEMBLE SWITCH ASSEMBLY AND ACTUATOR PER 88834261.
2. PRESS ACTUATOR ASSEMBLY AND THIMBLE ON SHAFT SO THAT TOP OF METAL ACTUATOR PLATE IS .568/.548 [14.43/13.92] FROM END OF SHAFT.
3. SWITCH MUST BE ADJUSTED TO OBTAIN .035/.025 [.89/.64] AIR GAP BETWEEN THIMBLE AND SWITCH IN FULL OPERATING POSITION.
4. SWITCH MUST MAKE CONTACT BETWEEN 1800-2500 RPM AS SPEED INCREASES AND BREAK 50-500 RPM BELOW ACTUAL MAKE.
5. SWITCH MECHANISM TO GIVE QUIET OPERATION ABOVE 2500 RPM.
6. WHEN ASSEMBLING HEYCO, NO SLACK ALLOWED INSIDE SWITCH COVER.

PACKING SPECIFICATIONS

1. PACK 1 PER CONTAINER, 21 CONTAINERS PER LAYER, 7 LAYERS PER PALLET, 147 MAX. PER PALLET, PACKING ASSY. 87854071, PER 88834200 AND 88834408.
2. ASSEMBLE BX CONNECTOR INSIDE PLASTIC BAG AND STAPLE, PACK WITH MOTOR.
3. CARTON LABELS MUST ALL FACE ONE DIRECTION TOWARD THE OPEN END OF THE PALLET. SEE 88834408.
4. NO PACKAGING TAPE OVER CARTON LABEL.

DRAWING REVISION AC	REVISION BY SDM	REV DATE/© DATE 4/26/2022	TOLERANCES (EXCEPT AS NOTED): DEC. INCH mm ANGLE	DRAWN BY MLS	Regal Beloit America, Inc.
REQUEST NUMBER ECR-0217276	APPROVED BY MLS	DATE 4/26/2022	.X ±0.1 [±3] ±1° .XX ±0.01 [±3] .XXX ±0.005 [±0.13] .XXXX ±0.0005 [±0.013]	DATE 9/23/2019	
REQUEST NUMBER DESCRIPTION CHANGE N/P FASCO LOGO TO FASCO TM			REMOVE BURRS & BREAK SHARP EDGES: .003/.015 [.08/.38] X 45° CORNER FILLETS: R.02 [.5] MACHINED SURFACES: .125/ mm 3.2/ INCH mm	APPROVED BY SED	DESCRIPTION OUTLINE MOTOR ASSY
<small>COPYRIGHT (PER REVISION DATE) REGAL BELOIT AMERICA, INC. ALL RIGHTS RESERVED. PROPRIETARY AND CONFIDENTIAL INFORMATION - THIS DOCUMENT IS THE PROPERTY OF REGAL BELOIT AMERICA, INC. (OWNER) AND CONTAINS OWNER'S PROPRIETARY INFORMATION. ANY PERSON, CORPORATION OR OTHER FIRM RECEIVING IT IS DEEMED, BY RECEIVING IT, TO AGREE THAT IT, AND/OR ANY PART OF IT, SHALL NOT BE DISCLOSED TO ANY PERSON, CORPORATION OR OTHER ENTITY, DUPLICATED, AND/OR USED, EXCEPT AS EXPRESSLY APPROVED IN WRITING IN ADVANCE BY OWNER. THIS DOCUMENT SHALL BE RETURNED TO OWNER UPON REQUEST. IT MAY BE SUBJECT TO CERTAIN RESTRICTIONS UNDER APPLICABLE EXPORT CONTROL LAWS AND REGULATIONS.</small>			mm DIMENSIONS IN [BRACKETS] ARE FOR REFERENCE ONLY	DATE 9/23/2019	MATERIAL
				REFERENCE	PROCESS/FINISH BLACK
				THIRD ANGLE PROJECTION	SIZE C
				DRAWING NUMBER 71216355	SHEET 2 OF 2

4

3

2

1