

# PRODUCT INFORMATION PACKET

FASCO®

Model No: D827

Catalog No: D827

OEM Replacement Motor, 1/8 HP, 1 Ph, 60 Hz, 115 V, 700 RPM, 1 Speed, 48 Frame, OAO



Regal and Fasco are trademarks of Regal Rexnord Corporation or one of its affiliated companies.

©2022 Regal Rexnord Corporation, All Rights Reserved. MC017097E

RegalRexnord



### Nameplate Specifications

|                    |                     |                     |               |
|--------------------|---------------------|---------------------|---------------|
| Output HP          | 1/8 Hp              | Output KW           | 0.10 kW       |
| Frequency          | 60 Hz               | Voltage             | 115 V         |
| Current            | 2.80 A              | Speed               | 700 rpm       |
| Service Factor     | 1                   | Phase               | 1             |
| Duty               | Continuous Air Over | Insulation Class    | B             |
| Frame              | 48                  | Enclosure           | Open Air Over |
| Thermal Protection | Thermally Protected | Ambient Temperature | 40 °C         |
| UL                 | Recognized          | CSA                 | Y             |
| CE                 | N                   | Number of Speeds    | 1             |

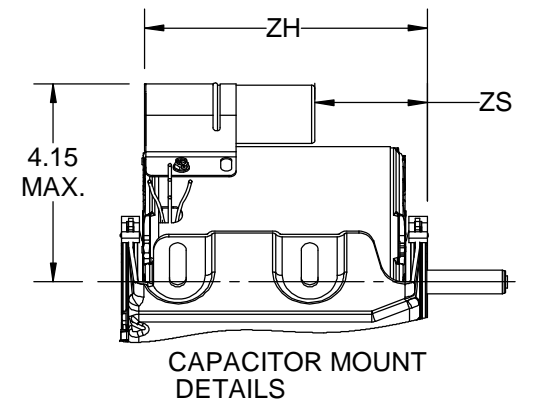
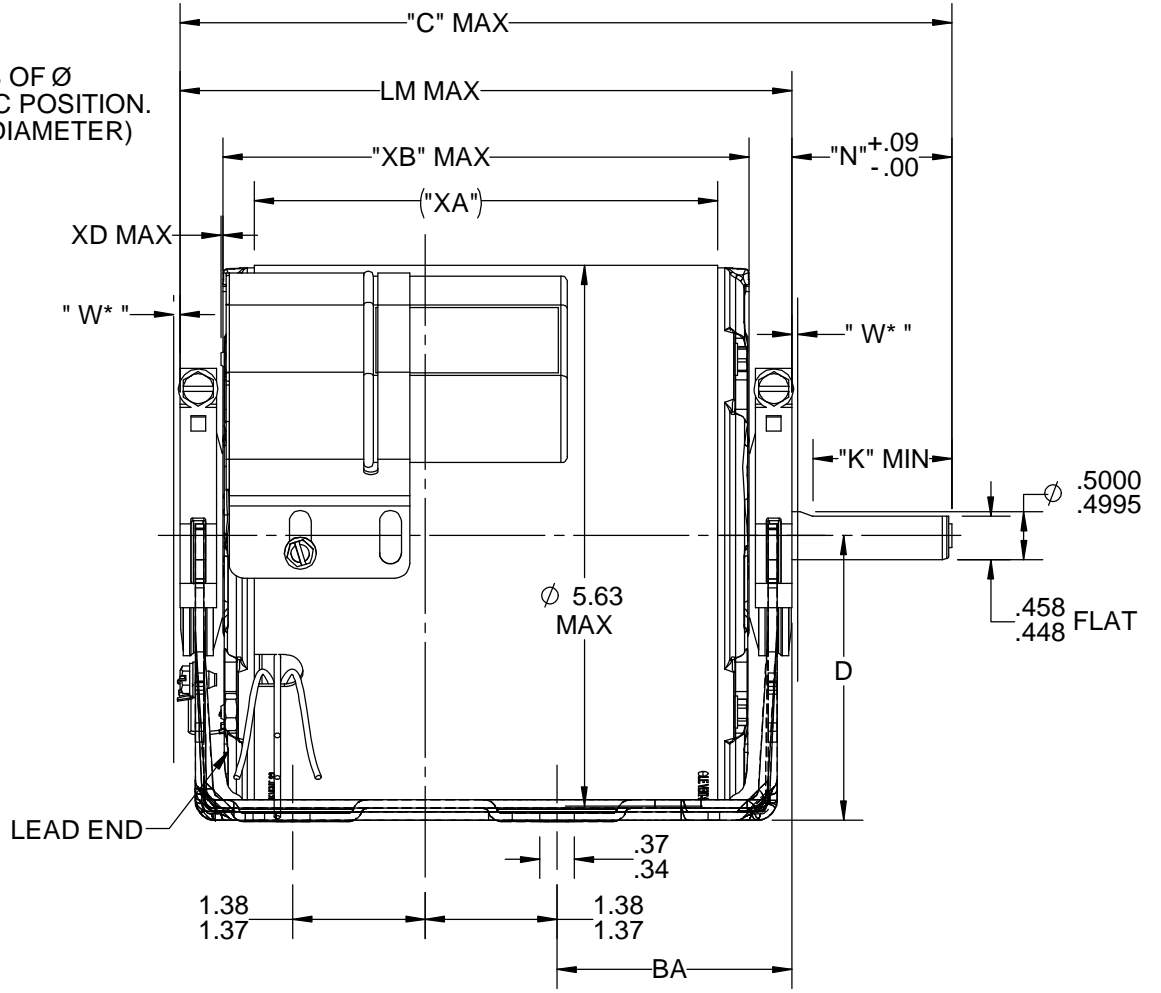
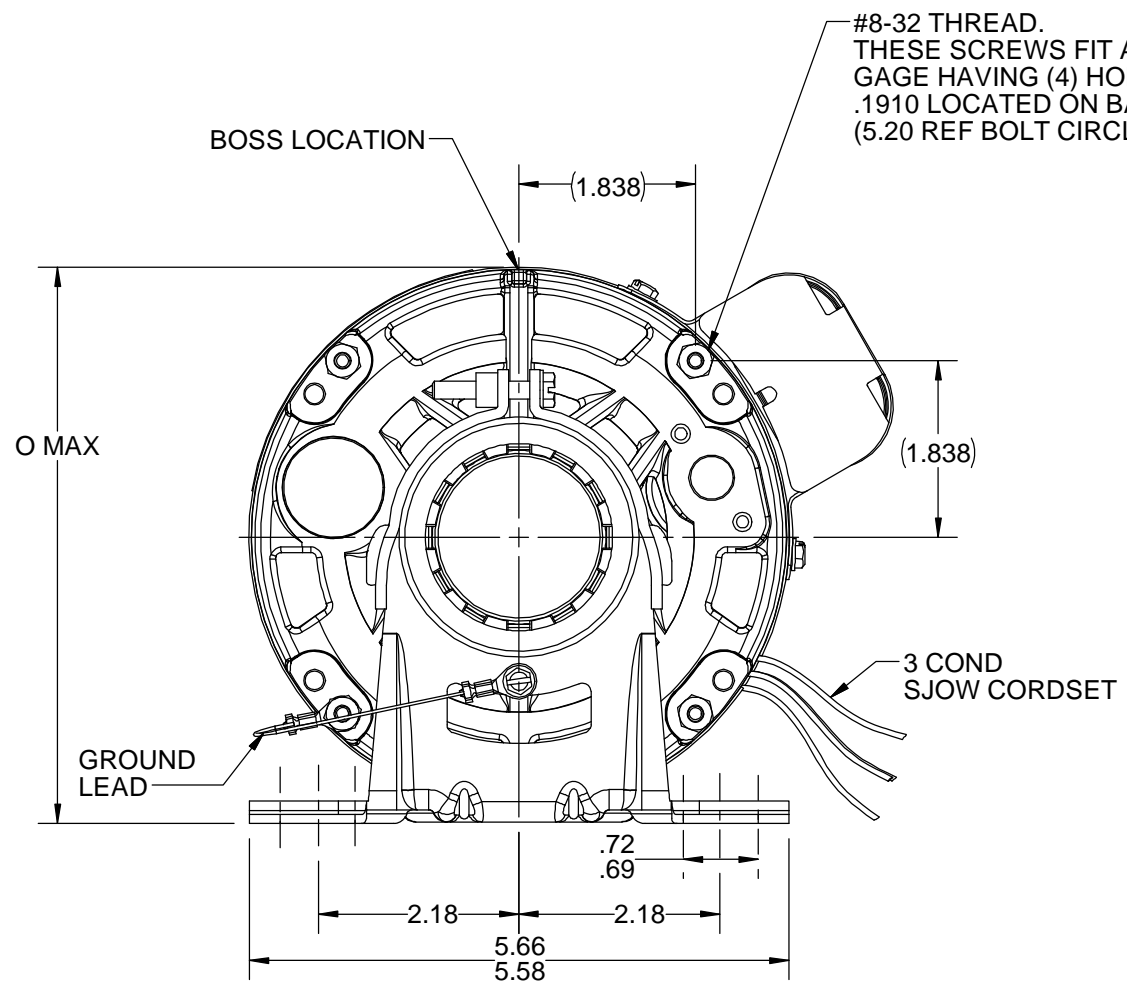
### Technical Specifications

|                       |                           |                      |                |
|-----------------------|---------------------------|----------------------|----------------|
| Electrical Type       | Permanent Split Capacitor | Poles                | 8              |
| Rotation              | Clockwise                 | Mounting             | Resilient Base |
| Motor Orientation     | Hor                       | Drive End Bearing    | Ball           |
| Opp Drive End Bearing | Ball                      | Frame Material       | Rolled Steel   |
| Shaft Type            | Flat                      | Overall Length       | 7.89 in        |
| Frame Length          | 4.82 in                   | Shaft Diameter       | 0.500 in       |
| Shaft Extension       | 1.50 in                   | Thru-bolts Extension | N/R in         |
| Outline Drawing       | 5KCP39HGU789AP            | Connection Drawing   | NP24X350113    |

This is an uncontrolled document once printed or downloaded and is subject to change without notice. Date Created:11/29/2022

| S.NO | CONNECTION      | COLOR   | EXIT TYPE   | EXIT LOC (VIEWING LE) | GAGE | MATERIAL      | WALL THK. | LENGTH | TERMINATION      |
|------|-----------------|---------|-------------|-----------------------|------|---------------|-----------|--------|------------------|
| 1    | COMMON LEAD     | WHITE   | SHELL NOTCH | 4:00                  | N/R  | N/R           | N/R       | 20.00  | .50BWS           |
| 2    | HIGH SPEED LEAD | BLACK   | SHELL NOTCH | 4:00                  | N/R  | N/R           | N/R       | 20.00  | .50BWS           |
| 3    | HIGH SPEED LEAD | RED     | SHELL NOTCH | 4:00                  | N/R  | N/R           | N/R       | 20.00  | .50BWS           |
| 4    | GROUND LEAD     | GRN-YEL | CLAMPSCREW  | 7:30                  | 18   | THERMOPLASTIC | 2/64      | 3.50   | #10 SERR. EYELET |

| NAMEPLATE DATA |                     |
|----------------|---------------------|
| MODEL          | 5KCP39HGU789AP      |
| CUST. P/N      | MODEL D827          |
| HP             | 1/8                 |
| RPM            | 700                 |
| VOLTS          | 115                 |
| HZ             | 60                  |
| SPEEDS         | 1                   |
| AMPS           | 2.80                |
| CAP. REQ'D-D1  | 6.0 µfd/370 Volts   |
| CAP. REQ'D-D2  | N/R                 |
| CONN.DRW#      | NP24X350113         |
| ROTATION       | CW (VIEWED FROM LE) |



- NOTES:
- 1) DIMENSIONS SHOWN ARE NOMINAL UNLESS OTHERWISE SPECIFIED.
  - 2) NAME PLATE LABEL LOCATION: 315° - CENTER - READ FROM LE WITH RESPECT TO BOSS LOCATION.
  - 3) "W\*" IS A VARIABLE CLEARANCE DUE TO VARIATION IN PARTS AND ASSEMBLY.
- "N" MINUS "W" = +.09 TO -.13

|      |      |      |      |      |      |      |      |
|------|------|------|------|------|------|------|------|
| 5.89 | 2.38 | 6.01 | 3.00 | 2.50 | N/A  | N/A  | .14  |
| ZH   | ZS   | O    | D    | BA   | BB   | XC   | XD   |
| 7.89 | 1.50 | 1.45 | N/A  | N/A  | 6.31 | 4.82 | 5.48 |
| C    | N    | K    | XN   | XK   | LM   | XA   | XB   |

NEMA 48 FRAME BASE

| VENTILATION SYSTEM       |        |
|--------------------------|--------|
| SHELL VENTS              | CLOSED |
| ENDSHIELD (OPP.LEAD END) | OPEN   |
| ENDSHIELD (LEAD END)     | OPEN   |

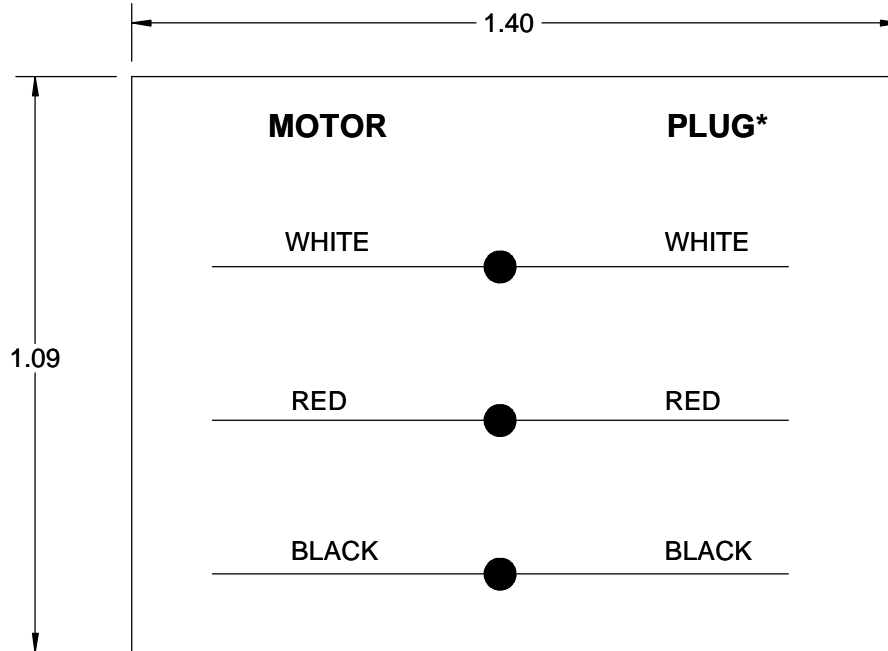
|   |                   |                    |
|---|-------------------|--------------------|
| DRAWING REVISION<br>A   | REVISION BY<br>RS | DATE<br>10/25/2018 |
| ECO<br>ECO-0146669  | APPROVED BY<br>RS | DATE<br>10/25/2018 |
| ECO DESCRIPTION<br>FILPPED LATCH STRAP SCREWS AS PER ECO  |                   |                    |
| <small>COPYRIGHT REGAL BELOIT AMERICA, INC. ALL RIGHTS RESERVED. PROPRIETARY AND CONFIDENTIAL INFORMATION - THIS DOCUMENT IS THE PROPERTY OF REGAL BELOIT AMERICA, INC. ("OWNER") AND CONTAINS OWNER'S PROPRIETARY INFORMATION. ANY PERSON, CORPORATION OR OTHER FIRM RECEIVING IT IS DEEMED, BY RECEIVING IT, TO AGREE THAT IT, AND/OR ANY PART OF IT, SHALL NOT BE DISCLOSED TO ANY PERSON, CORPORATION OR OTHER ENTITY, DUPLICATED, AND/OR USED, EXCEPT AS EXPRESSLY APPROVED IN WRITING IN ADVANCE BY OWNER. THIS DOCUMENT SHALL BE RETURNED TO OWNER UPON REQUEST. IT MAY BE SUBJECT TO CERTAIN RESTRICTIONS UNDER APPLICABLE EXPORT CONTROL LAWS AND REGULATIONS.</small> |                   |                    |

|                        |
|------------------------|
| DRAWN BY<br>GREG       |
| DATE<br>02/01/10       |
| APPROVED BY<br>GREG    |
| DATE<br>02/01/10       |
| REFERENCE              |
| THIRD ANGLE PROJECTION |

|   |                                  |
|---|----------------------------------|
| <b>REGAL</b> ™ Regal Beloit America, Inc. |                                  |
| DESCRIPTION<br><b>OUTLINE</b>             |                                  |
| CUST. NAME: ( FASCO DISTRIBUTING CO.)     |                                  |
| MATERIAL                                  | PROCESS/FINISH                   |
| SIZE<br>B                                 | DRAWING NUMBER<br>5KCP39HGU789AP |
| SHEET<br>1 OF 1                           |                                  |

COPYRIGHT REGAL BELOIT AMERICA, INC. ALL RIGHTS RESERVED. UNCONTROLLED COPY  
 PROPRIETARY AND CONFIDENTIAL INFORMATION - THIS DOCUMENT IS THE PROPERTY OF  
 REGAL BELOIT AMERICA, INC. ("OWNER") AND CONTAINS OWNER'S PROPRIETARY  
 INFORMATION. ANY PERSON, CORPORATION OR OTHER FIRM RECEIVING IT IS DEEMED,  
 BY RECEIVING IT, TO AGREE THAT IT, AND/OR ANY PART OF IT, SHALL NOT BE DISCLOSED  
 TO ANY PERSON, CORPORATION OR OTHER ENTITY, DUPLICATED, AND/OR USED, EXCEPT  
 AS EXPRESSLY APPROVED IN WRITING IN ADVANCE BY OWNER. THIS DOCUMENT SHALL  
 BE RETURNED TO OWNER UPON REQUEST. IT MAY BE SUBJECT TO CERTAIN  
 RESTRICTIONS UNDER APPLICABLE EXPORT CONTROL LAWS AND REGULATIONS.

|  |                              |                           |
|--|------------------------------|---------------------------|
| DRAWING REVISION<br><b>A</b>                     | REVISION BY<br><b>KEP</b>    | DATE<br><b>10/12/2017</b> |
| ECO<br><b>ECO-0132085</b>                        | APPROVED BY<br><b>TRICIA</b> | DATE<br><b>10/12/2017</b> |
| ECO DESCRIPTION<br><b>INITIAL RELEASE TO IDS</b> |                              |                           |



**\*NOTE : USE REPLACED MOTOR'S EXISTING PLUG**

|                        |                              |   |                        |
|------------------------|------------------------------|---|------------------------|
|                        | DRAWN BY<br><b>KEP</b>       | <b>Regal Beloit America, Inc.</b>           |                        |
|                        | DATE<br><b>10/12/2017</b>    |   |                        |
|                        | APPROVED BY<br><b>TRICIA</b> | DESCRIPTION<br><b>CONN DIAGRAM-EXTERNAL</b> |                        |
|                        | DATE<br><b>10/12/2017</b>    | <b>FMF: 5KCP39HGU789AP</b>                  |                        |
|                        | REFERENCE                    | MATERIAL                                    |                        |
| THIRD ANGLE PROJECTION | SIZE<br><b>A</b>             | DRAWING NUMBER<br><b>NP24X350113</b>        | SHEET<br><b>1 OF 1</b> |