

# PRODUCT INFORMATION PACKET



Model No: DBL6409NB  
Catalog No: DBL6409NB  
Fan Coil & Air Conditioner Motor, 1/10,1/15,1/20,1/25,1/30 HP, 1 Ph, 60 Hz, 115 V, 1050 RPM,  
5 Speed, 42 Frame, OAO



Regal and Century are trademarks of Regal Rexnord Corporation or one of its affiliated companies.  
©2022 Regal Rexnord Corporation, All Rights Reserved. MC017097E





### Nameplate Specifications

Output HP	1/10,1/15,1/20,1/25,1/30 Hp	Output KW	0.07 kW
Frequency	60 Hz	Voltage	115 V
Current	3.5,2.8,2.2,1.9,1.6 A	Speed	1050 rpm
Service Factor	1	Phase	1
Duty	Air Over	Insulation Class	B
Frame	42Y	Enclosure	Open Air Over
Thermal Protection	Automatic	Ambient Temperature	40 °C
UL	Recognized	CSA	Y
CE	N	Number of Speeds	5

### Technical Specifications

Electrical Type	Shaded Pole	Starting Method	Across The Line
Poles	6	Rotation	Counterclockwise Lead End
Mounting	Resilient Ring/Extended Studs	Motor Orientation	Horizontal
Drive End Bearing	Sleeve	Opp Drive End Bearing	Sleeve
Frame Material	Rolled Steel	Shaft Type	Flat
Overall Length	24.00 in	Shaft Diameter	0.500 in
Shaft Extension	10.2X.5X10.5 in		
Connection Drawing	7574A87F01	Outline Drawing	DBL6409NB-S01

This is an uncontrolled document once printed or downloaded and is subject to change without notice. Date Created:11/28/2022

GENERAL INFORMATION:

SHAFT RUNOUT: .001[.03] T.I.R. PER INCH LENGTH OF EXTENSION.

END PLAY: .010[.30] TO .063[1.60]

BEARINGS: SLEEVE

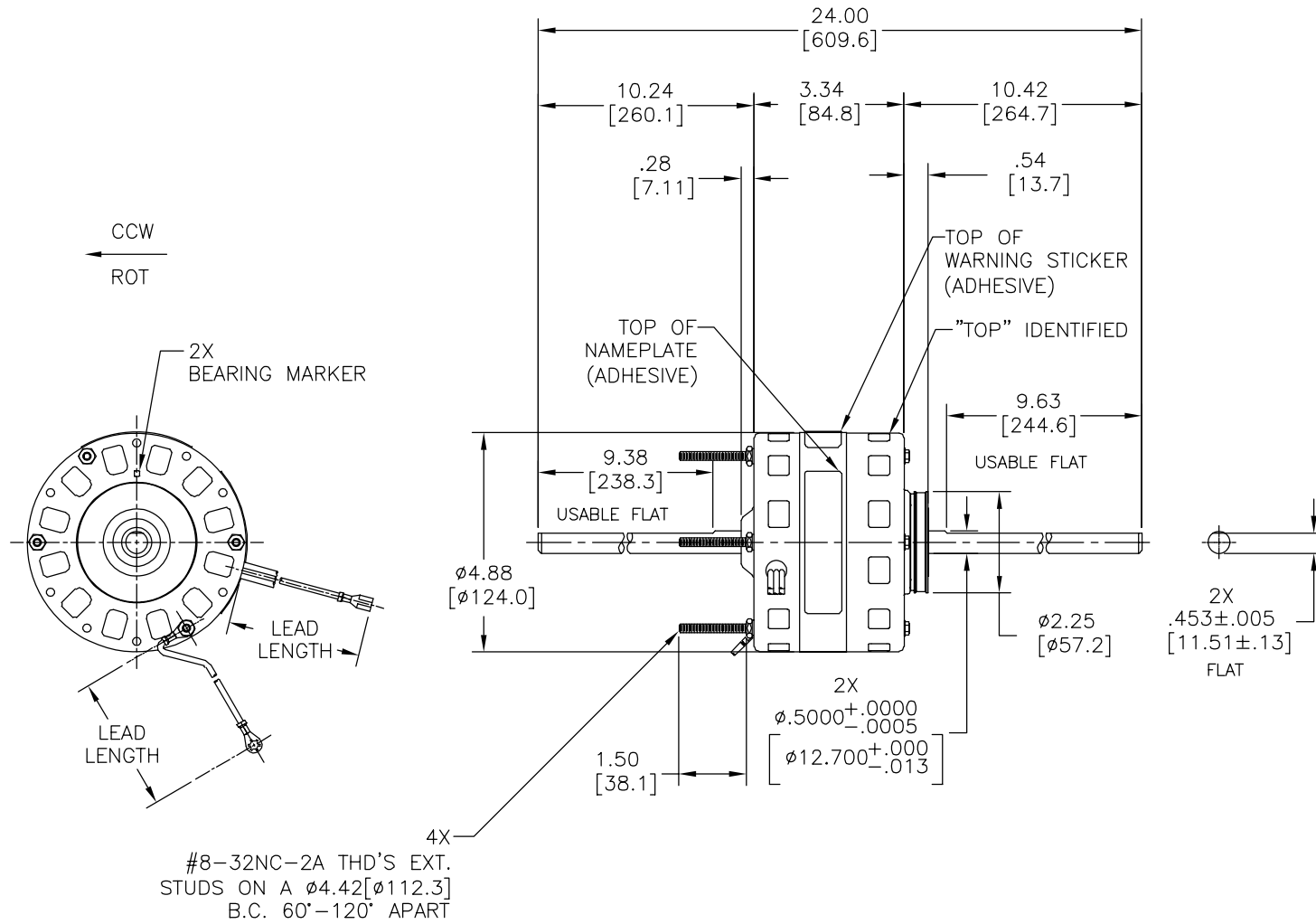
MOUNTING POSITION: HORIZONTAL

ELECTRICAL DATA:

OVERLOAD PROTECTOR: AUTOMATIC RESET (SENSATA 7AM 034)

LEADS: NO.18 GA. .03[.8] THICK, 125°C XLP INSUL.

GROUND LEAD: NO.18 GA. .03[.8] THICK, GREEN INSUL.



COLOR	LENGTH	TERMINAL OR STRIP LENGTH
GREEN (GRD)	11.0/13.0 [279/330]	#10 EYELET
RED	11.0/13.0 [279/330]	.25[6.4] FEMALE SPADE
YELLOW	11.0/13.0 [279/330]	.25[6.4] FEMALE SPADE
BLUE	11.0/13.0 [279/330]	.25[6.4] FEMALE SPADE
ORANGE	11.0/13.0 [279/330]	.25[6.4] FEMALE SPADE
BLACK	11.0/13.0 [279/330]	.25[6.4] FEMALE SPADE
WHITE	11.0/13.0 [279/330]	.25[6.4] FEMALE SPADE
COLOR	LENGTH	TERMINAL OR STRIP LENGTH

NOTE:  
1. #1 615059-001, LENGTH ADAPTER KIT TO BE SHIPPED SEPARATELY IN EACH CARTON WITH MOTOR.

NAMEPLATE DATA:	EXTERNAL CONNECTION DIAGRAM
MODEL NO.: B42B01A01 CUST. P/N: DBL6409NB HP: 1/10 ROT.: CCWLE RPM: 1050/5 SPD. TYPE: FE FRAME: 42Y VOLTS: 115 PH: 1 AMPS: 3.5 HZ: 60 INS.: A AMB.: 40° C DUTY: AIR COVER CAP.: - ENCL.: - UL LOGO CSA LOGO THERMALLY PROTECTED TYPE C	

PERFORMANCE CURVE NO.	TORQUE @1050 RPM (25°C)	APPROVED SAMPLE	UL COMPONENT		CSA	
			FILE #	CCN #	FILE #	CLASS #
-	8.0 OZ. FT.	PSE7418	E46412	PRG2	LR43341	4211-01

ENCLOSURE	
MAIN FRAME - OLE	OPEN
END FRAME - OLE	OPEN
MAIN FRAME - LE	OPEN
END FRAME - LE	OPEN

CUSTOMER	DISTRIBUTION SERVICE

DRAWING REVISION	REVISION BY	DATE
B	D.DUARTE	10-29-2014
ECO	F.PAYAN	10-29-2014

ECO DESCRIPTION  
SEE ECO

COPYRIGHT REGAL BELOIT AMERICA, INC. ALL RIGHTS RESERVED. PROPRIETARY AND CONFIDENTIAL INFORMATION - THIS DOCUMENT IS THE PROPERTY OF REGAL BELOIT AMERICA, INC. (OWNER) AND CONTAINS OWNER'S PROPRIETARY INFORMATION. ANY PERSON, CORPORATION OR OTHER FIRM RECEIVING IT IS DEEMED, BY RECEIVING IT, TO AGREE THAT IT, AND/OR ANY PART OF IT, SHALL NOT BE DISCLOSED TO ANY PERSON, CORPORATION OR OTHER ENTITY, DUPLICATED, AND/OR USED, EXCEPT AS EXPRESSLY APPROVED IN WRITING IN ADVANCE BY OWNER. THIS DOCUMENT SHALL BE RETURNED TO OWNER UPON REQUEST. IT MAY BE SUBJECT TO CERTAIN RESTRICTIONS UNDER APPLICABLE EXPORT CONTROL LAWS AND REGULATIONS.

DRAWN BY:	DATE:
P.ROJAS	01-15-2014
APPROVED BY:	DATE:
D.BALDERRAMA	01-05-2014

DESCRIPTION	MATERIAL
MODEL-RFHP-42FR OUTLINE	

THIRD ANGLE PROJECTION	SIZE DWG NO	SHEET
	C DBL6409NB	1