

PRODUCT INFORMATION PACKET



Model No: DC105
Catalog No: DC105
SCR Motor, 1/4 HP, 90 V, 1750 RPM, 34 Frame, TEFC



Regal and Century are trademarks of Regal Rexnord Corporation or one of its affiliated companies.
©2023 Regal Rexnord Corporation, All Rights Reserved. MC017097E





Nameplate Specifications

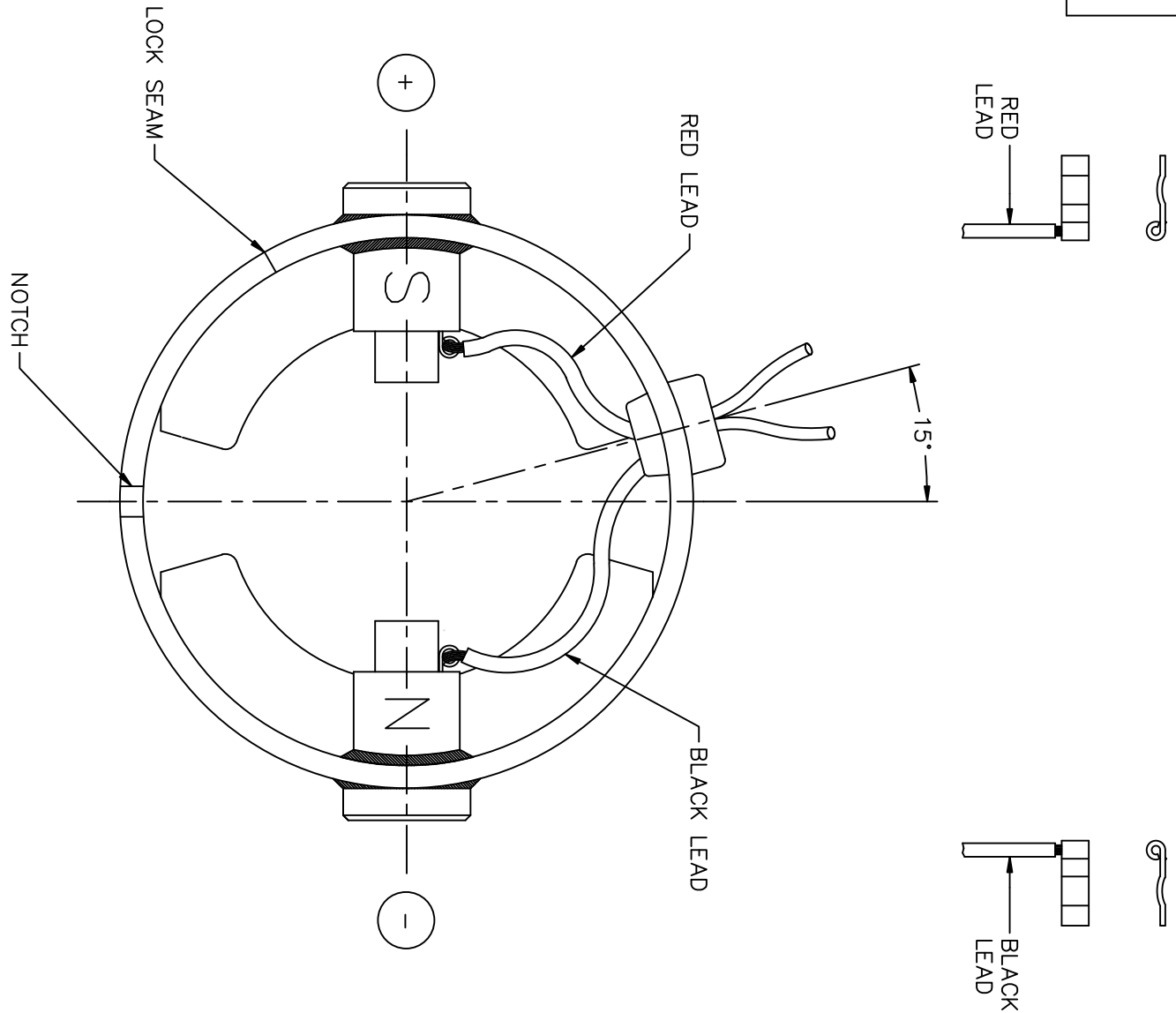
Output HP	1/4 Hp	Output KW	0.19 kW
Voltage	90 V	Current	2.7 A
Speed	1750 rpm	Service Factor	1
Efficiency	81.5 %	Duty	Continuous
Insulation Class	H	Frame	34
Enclosure	Totally Enclosed Fan Cooled	Thermal Protection	No Protection
Ambient Temperature	40 °C	UL	Recognized
CSA	Y	CE	N
Number of Speeds	1		

Technical Specifications


Electrical Type	DC Permanent Magnet	Starting Method	Across The Line
Rotation	Reversible	Mounting	Round
Drive End Bearing	Ball	Opp Drive End Bearing	Ball
Frame Material	Rolled Steel	Shaft Type	Keyed
Overall Length	10.02 in	Frame Length	7.18 in
Shaft Diameter	0.500 in	Shaft Extension	1.38 in
Connection Drawing	M100508401	Outline Drawing	611-0050-DC105

This is an uncontrolled document once printed or downloaded and is subject to change without notice. Date Created:03/17/2023

DC MOTORS



EXTERNAL CONNECTIONS FOR CCW ROTATION VIEWING
LEAD END OF MOTOR WITH RED LEAD POSITIVE (+)
AND BLACK LEAD NEGATIVE (-) FOR CW ROTATION
POLARITY

		TOLERANCES UNLESS SPECIFIED		 ELECTRIC MOTORS GEARMOTORS AND DRIVES		DRAWN PG 10/30/89		
		DEC.	INCHES			CHK		
			.X	±.1	APPD PW 10/31/89		SCALE 1=1	
03	REMOVED BARRIERS, NOT NEEDED, ISAAC 10-1959	IPG 5/14/2010	SK	.XX	±.01	TITLE CONNECTION DIAGRAM		
02	CORRECTED "N" & "S" PER ECR 83508	SMB 12/16/03	IPG	.XXX	±.005	REF 15008-01-117		
01	REDRAWN ON CAD	AJR 06/30/99		.XXXX	±.0005	FMF CM31D17NZ1		
NO.	REVISION	BY & DATE	CHK	ANG	±1/2'	PREV		
THIS DRAWING IN DESIGN AND DETAIL IS OUR PROPERTY AND MUST NOT BE USED EXCEPT IN CONNECTION WITH OUR WORK ALL RIGHTS OF DESIGN AND INVENTION ARE RESERVED THIS IS AN ELECTRONICALLY GENERATED DOCUMENT - DO NOT SCALE THIS PRINT			RFP	CAD FILE M100508401		SIZE A	DRAWING NO. M1005084.01	REV. 03
			DIST					