

# PRODUCT INFORMATION PACKET



Model No: DC112  
Catalog No: DC112  
1/3 HP SCR Motor, 1750 RPM, 90 V, 56C Frame, TENV  
SCR Motors



Regal and Century are trademarks of Regal Rexnord Corporation or one of its affiliated companies.  
©2021 Regal Rexnord Corporation, All Rights Reserved. MC017097E





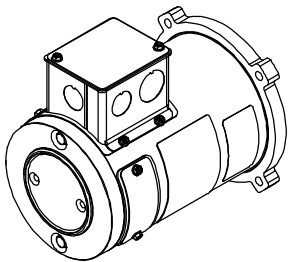
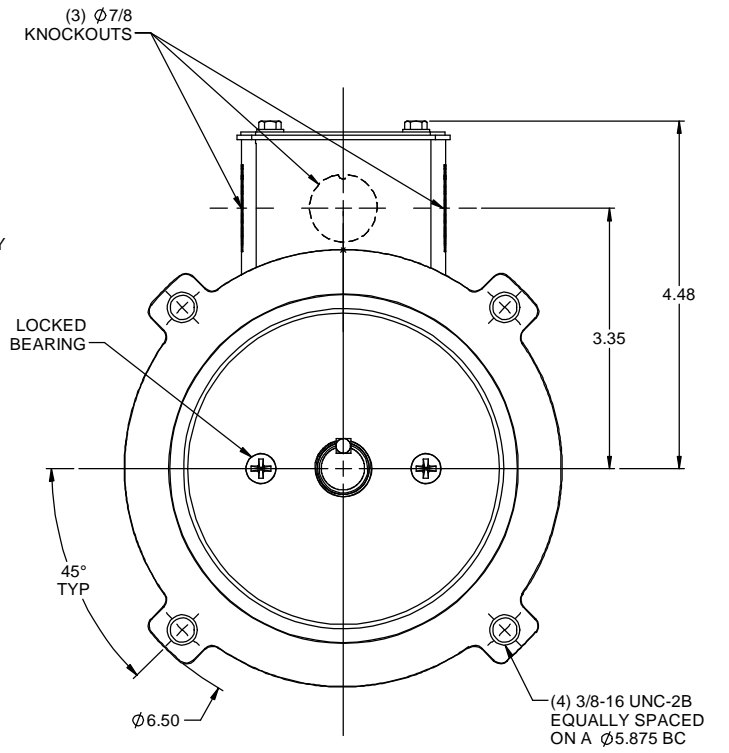
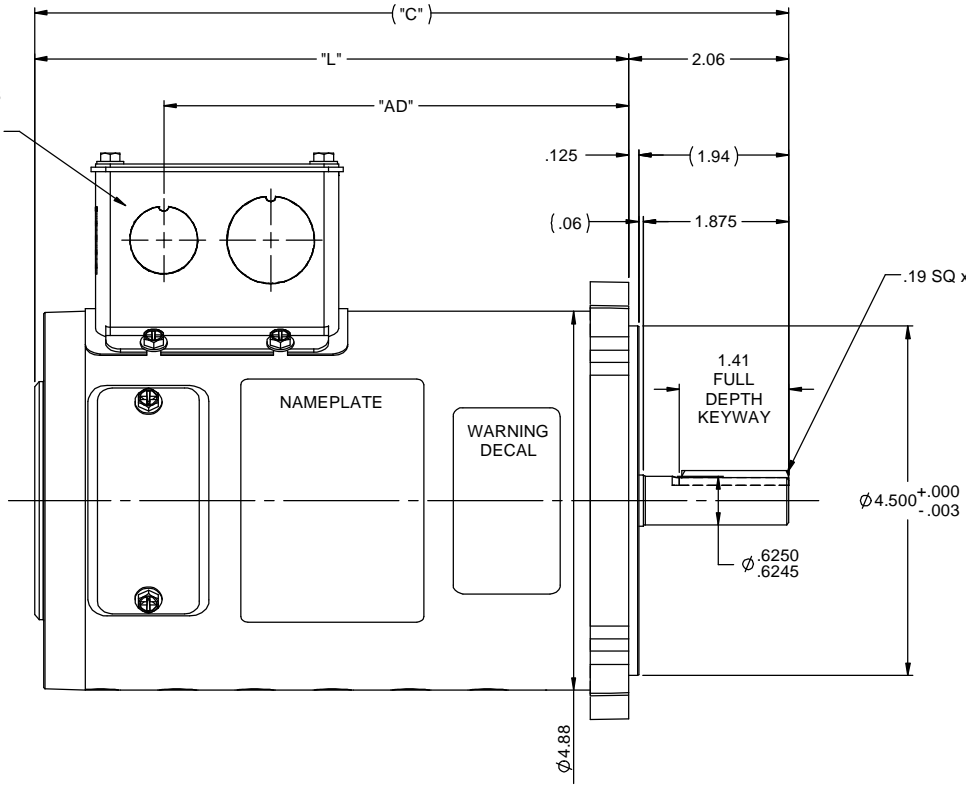
**Nameplate Specifications**

Output HP	1/3 Hp	Output KW	0.25 kW
Voltage	90 V	Current	3.7 A
Speed	1750 rpm	Service Factor	1
Duty	Continuous	Insulation Class	H
Frame	SS56C	Enclosure	Totally Enclosed Non Ventilated
Thermal Protection	No	Ambient Temperature	40 °C
UL	Recognized	CSA	Y
CE	N	Number of Speeds	1

**Technical Specifications**

Electrical Type	DC Permanent Magnet	Starting Method	Across The Line
Rotation	Reversible	Mounting	Round
Drive End Bearing	Ball	Opp Drive End Bearing	Ball
Frame Material	Rolled Steel	Shaft Type	Keyed
Overall Length	10.21 in	Frame Length	6.50 in
Shaft Diameter	0.625 in	Shaft Extension	2.06 in
Outline Drawing	612-0073		

This is an uncontrolled document once printed or downloaded and is subject to change without notice. Date Created:10/12/2021



- NOTES:  
 1) MAXIMUM FACE RUNOUT .004 T.I.R.  
 2) MAXIMUM PILOT ECCENTRICITY .004 T.I.R.  
 3) PERMISSIBLE SHAFT RUNOUT .002 T.I.R.  
 4) GASKETS THROUGHOUT.

DC126	11.71	9.65	7.99	180	1/2	2500
DC134	11.71	9.65	7.99	180	1/2	1750
DC114	11.71	9.65	7.99	90	1/2	1750
DC145	10.71	8.65	6.99	180	1/3	1750
DC112	10.21	8.15	6.49	90	1/3	1750
DC111	9.71	7.65	5.99	90	1/4	1750
CATALOG No.	"C"	"L"	"AD"	VOLTS	H.P.	RPM

				TOLERANCES UNLESS SPECIFIED				DRAWN SAD 8/7/2012	
				DEC	INCHES			CHK	APPR
01	ADDED 1.875 SHAFT DIM PER NEMA STANDARD, ADDED .06 & 1.94 REF DIMS. RELEASED TO PRODUCTION	IPG	9/10/12	XX	±.03	TITLE OUTLINE		SCALE 5:8	
	REF 027725.00, DC111, DC112, DC114, DC145, DC126, DC134	SAD	8/7/2012	XXX	±.005	42 FRAME DC		REF 612-0036	
				XXXX	±.0005	MATL		FMF DC111	
NO	REVISION	BY & DATE	CHK	ANG	±1/2°	FINISH		PAGE OF	
				THIRD ANGLE PROJECTION		PREV		SIZE B	
				NETWORK FILE NAME 612-0073		DRAWING NO 612-0073		REV 01	