

# PRODUCT INFORMATION PACKET



Model No: DC115  
Catalog No: DC115  
3/4 HP SCR Motor, 1750 RPM, 90 V, 56C Frame, TEFC  
SCR Motors



Regal and Century are trademarks of Regal Rexnord Corporation or one of its affiliated companies.  
©2021 Regal Rexnord Corporation, All Rights Reserved. MC017097E





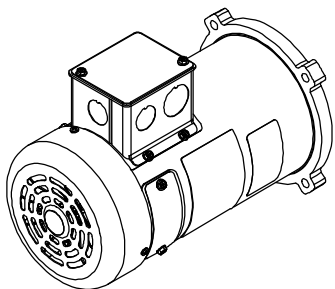
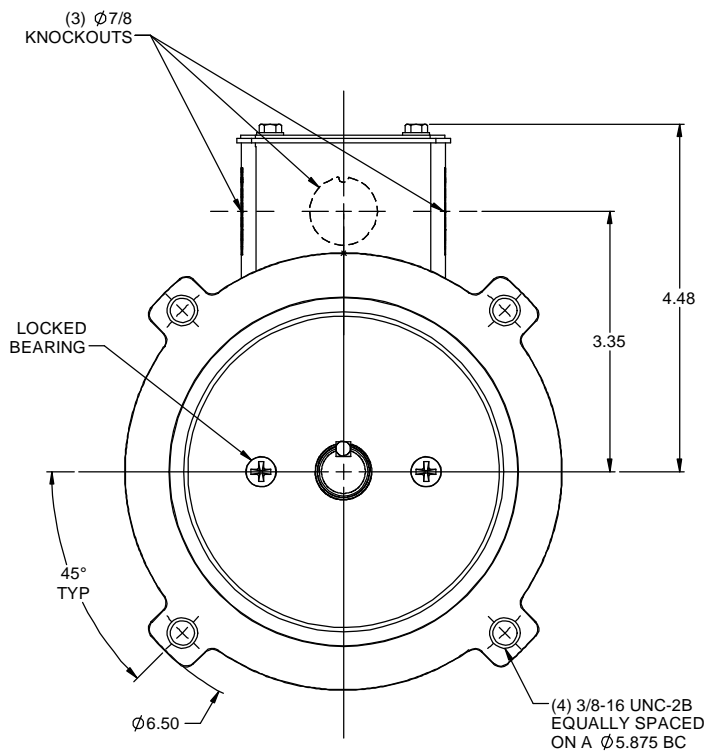
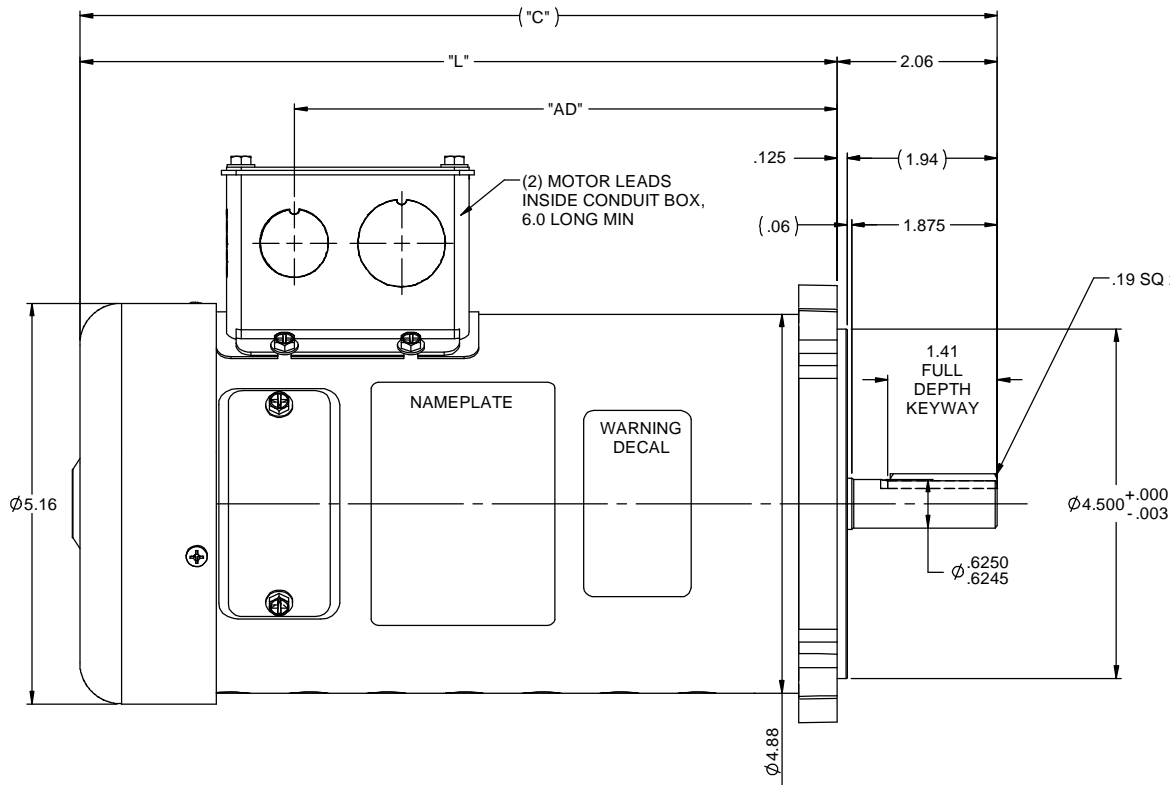
**Nameplate Specifications**

Output HP	<b>3/4 Hp</b>	Output KW	<b>0.56 kW</b>
Voltage	<b>90 V</b>	Current	<b>7.6 A</b>
Speed	<b>1750 rpm</b>	Service Factor	<b>1</b>
Duty	<b>Continuous</b>	Insulation Class	<b>H</b>
Frame	<b>SS56C</b>	Enclosure	<b>Totally Enclosed Fan Cooled</b>
Thermal Protection	<b>No</b>	Ambient Temperature	<b>40 °C</b>
UL	<b>Recognized</b>	CSA	<b>Y</b>
CE	<b>N</b>	Number of Speeds	<b>1</b>

**Technical Specifications**

Electrical Type	<b>DC Permanent Magnet</b>	Starting Method	<b>Across The Line</b>
Rotation	<b>Reversible</b>	Mounting	<b>Round</b>
Drive End Bearing	<b>Ball</b>	Opp Drive End Bearing	<b>Ball</b>
Frame Material	<b>Rolled Steel</b>	Shaft Type	<b>Keyed</b>
Overall Length	<b>13.81 in</b>	Frame Length	<b>9.50 in</b>
Shaft Diameter	<b>0.625 in</b>	Shaft Extension	<b>2.06 in</b>
Outline Drawing	<b>612-0075</b>		

This is an uncontrolled document once printed or downloaded and is subject to change without notice. Date Created:10/07/2021



- NOTES:  
 1) MAXIMUM FACE RUNOUT .004 T.I.R.  
 2) MAXIMUM PILOT ECCENTRICITY .004 T.I.R.  
 3) PERMISSIBLE SHAFT RUNOUT .002 T.I.R.  
 4) GASKETS THROUGHOUT.

DC127	13.81	11.75	8.99	180	3/4	1750
DC125	11.81	9.75	6.99	180	1/2	1750
DC115	13.81	11.75	8.99	90	3/4	1750
DC113	11.81	9.75	6.99	90	1/2	1750
CATALOG No.	"C"	"L"	"AD"	VOLTS	H.P.	RPM

				TOLERANCES UNLESS SPECIFIED		DRAWN SAD 8/9/2012	
				DEC	INCHES	CHK	
				X	±.1	APPR	
01	ADDED 1.875 SHAFT DIM PER NEMA STANDARD, ADDED .06 & 1.94 REF DIMS. RELEASED TO PRODUCTION	IPG	9/14/12	XX	±.03	TITLE OUTLINE	
				XXX	±.005	42 FRAME DC	
				XXXXX	±.0005	MATL	
NO	REVISION	BY & DATE	CHK	ANG	±1/2°	FINISH	
				RFP		PREV	
				NETWORK FILE NAME 612-0075		SIZE B	DRAWING NO 612-0075
						REV 01	