

PRODUCT INFORMATION PACKET

Model No: DC122
Catalog No: DC122
SCR Motor, 1/2 HP, 90 V, 1750 RPM, SS56C Frame, TENV



Regal and are trademarks of Regal Rexnord Corporation or one of its affiliated companies.
©2022 Regal Rexnord Corporation, All Rights Reserved. MC017097E

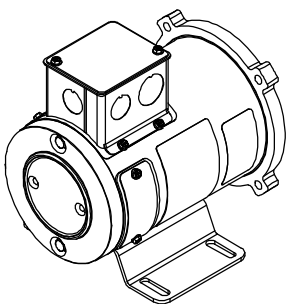
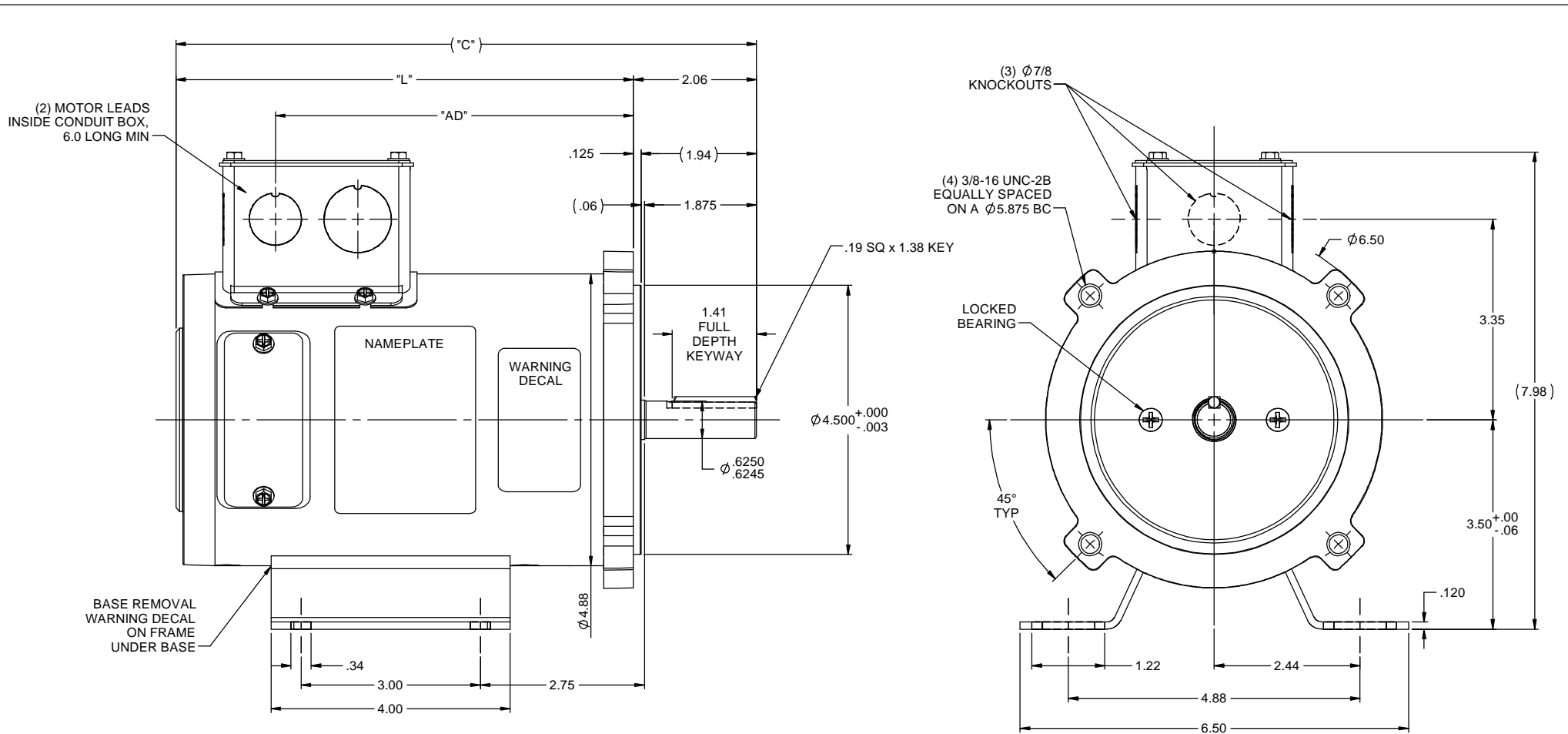
Nameplate Specifications

Output HP	1/2 Hp	Output KW	0.37 kW
Voltage	90 V	Current	5 A
Speed	1750 rpm	Service Factor	1
Duty	Continuous	Insulation Class	H
Frame	SS56C	Enclosure	Totally Enclosed Non Ventilated
Thermal Protection	No Protection	Ambient Temperature	40 °C
UL	Recognized	CSA	Y
CE	N	Number of Speeds	1

Technical Specifications

Electrical Type	DC Permanent Magnet	Starting Method	Across The Line
Rotation	Reversible	Mounting	Rigid Base
Drive End Bearing	Ball	Opp Drive End Bearing	Ball
Frame Material	Rolled Steel	Shaft Type	Keyed
Overall Length	11.71 in	Frame Length	8.50 in
Shaft Diameter	0.625 in	Shaft Extension	2.06 in
Connection Drawing	00531901	Outline Drawing	612-0074-DC122

This is an uncontrolled document once printed or downloaded and is subject to change without notice. Date Created:09/19/2022

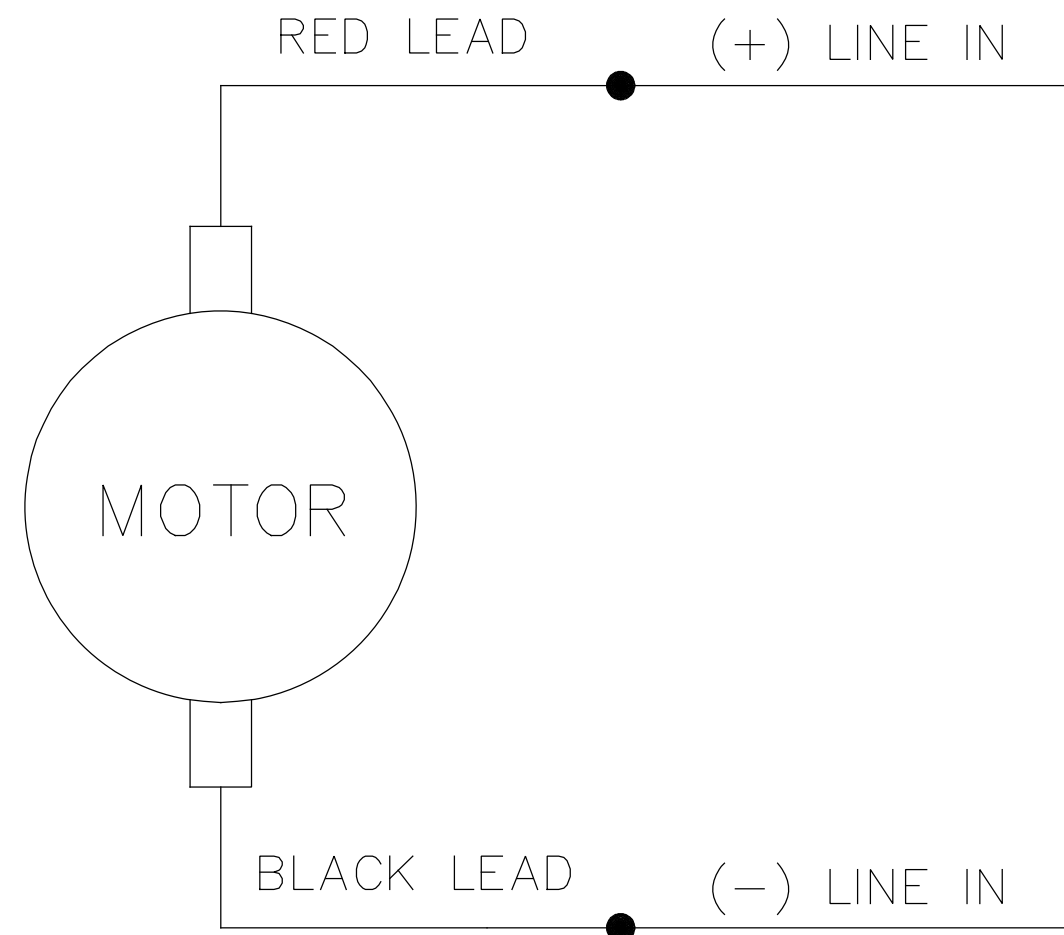


- NOTES:
- 1) MAXIMUM FACE RUNOUT .004 T.I.R.
 - 2) MAXIMUM PILOT ECCENTRICITY .004 T.I.R.
 - 3) PERMISSIBLE SHAFT RUNOUT .002 T.I.R.
 - 4) GASKETS THROUGHOUT.

DC133	11.71	9.65	7.99	90	1/2	2500
DC122	11.71	9.65	7.99	90	1/2	1750
DC120	10.21	8.15	6.49	90	1/3	1750
DC119	9.71	7.65	5.99	90	1/4	1750
CATALOG No.	"C"	"L"	"AD"	VOLTS	H.P.	RPM

NO		REVISION	BY & DATE	CHK	ANG	±1/2°	FINISH	PREV	SIZE	DRAWING NO	REV
01		ADDED 1.875 SHAFT DIM PER NEMA STANDARD, ADDED .06 & 1.94 REF DIMS, ADDED 2.75 DIM BASE LOCATION, RELEASED TO PRODUCTION	IPG 9/13/2012	X	±.1		TOLERANCES UNLESS SPECIFIED DEC INCHES				
		REF. 027725, 612-0073, DC119, DC120, DC122, DC133	SAD 8/9/12	XX	±.03		TITLE OUTLINE				
				XXX	±.005		42 FRAME DC				
				XXXX	±.0005		MATL				
							FMF DC119				
							PAGE OF				
							DRAWN SAD 8/9/12				
							CHK				
							APPR				
							SCALE 5:8				
							REF 612-0036				
							NETWORK FILE NAME 612-0074				
							SIZE B				
							DRAWING NO 612-0074				
							REV 01				





CONNECTIONS SHOWN FOR CCW ROTATION FACING LEAD END OF THE MOTOR
 TO REVERSE ROTATION INTERCHANGE LINE LEADS

NO.	REVISION	BY & DATE	CHK	TOLERANCES UNLESS SPECIFIED		LEESON	ELECTRIC MOTORS GEARMOTORS AND DRIVES	DRAWN TJF 11/15/97	
				DEC.	INCHES				CHK
				.X	±.1			APPD POW 11/15/97	
E	"MOTOR" WAS "ARMATURE", ECO-0163602	IPG 3/14/19		.XX	±.01	TITLE	EXTERNAL WIRING DIAGRAM PMDC MOTOR	SCALE 1=2	
D	UPDATED TO MAKE IT GENERIC, ECO-0163547	IPG 3/13/19		.XXX	±.005			REF	
01	REDRAWN ON CAD. REVISED NOTES.	SJB 9/20/2005		.XXXX	±.0005	MAT'L.		FMF	
				ANG	±1/2°	FINISH		PREV	
THIS DRAWING IN DESIGN AND DETAIL IS OUR PROPERTY AND MUST NOT BE USED EXCEPT IN CONNECTION WITH OUR WORK ALL RIGHTS OF DESIGN AND INVENTION ARE RESERVED THIS IS AN ELECTRONICALLY GENERATED DOCUMENT - DO NOT SCALE THIS PRINT				RFP	CAD FILE 00531901		SIZE A	DRAWING NO. 005319.01	REV. E
				DIST					