

PRODUCT INFORMATION PACKET



Model No: DC124

Catalog No: DC124

Replaced by 108022.00 once inventory depleted - 1,1750,TEFC,56C,DC/90
SCR Motors



Regal and Century are trademarks of Regal Rexnord Corporation or one of its affiliated companies.
©2021 Regal Rexnord Corporation, All Rights Reserved. MC017097E





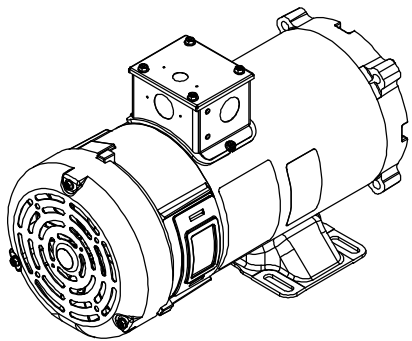
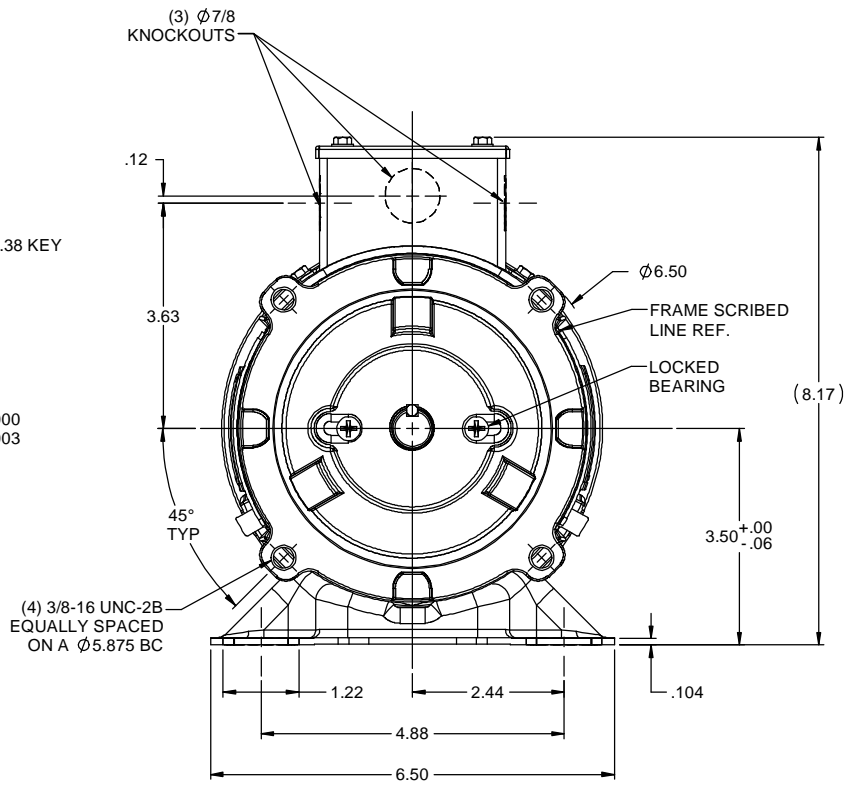
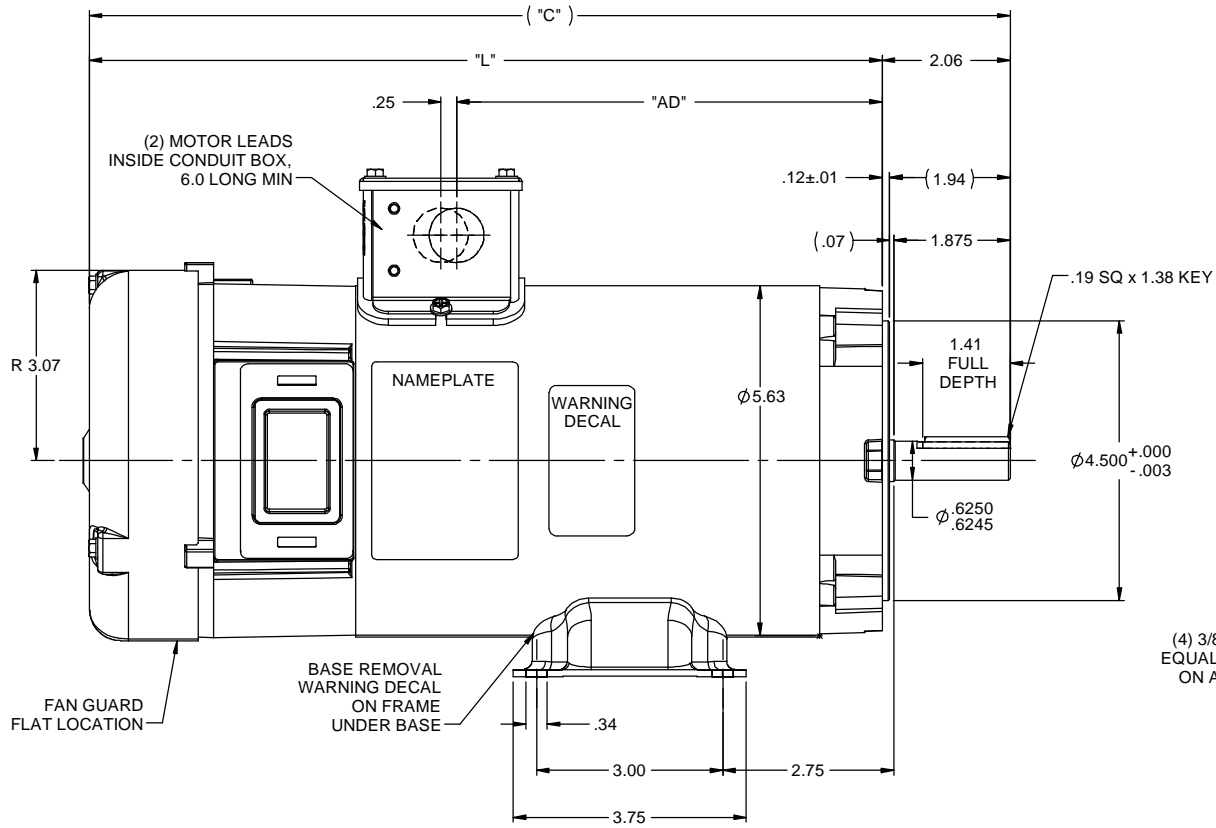
Nameplate Specifications

Output HP	1 Hp	Output KW	0.75 kW
Voltage	90 V	Current	10 A
Speed	1750 rpm	Service Factor	1
Duty	Continuous	Insulation Class	H
Frame	S56C	Enclosure	Totally Enclosed Fan Cooled
Thermal Protection	No	Ambient Temperature	40 °C
UL	Recognized	CSA	Y
CE	N	Number of Speeds	1

Technical Specifications

Electrical Type	DC Permanent Magnet	Starting Method	Across The Line
Rotation	Reversible	Mounting	Rigid Base
Drive End Bearing	Ball	Opp Drive End Bearing	Ball
Frame Material	Rolled Steel	Shaft Type	Keyed
Overall Length	14.82 in	Frame Length	7.47 in
Shaft Diameter	0.625 in	Shaft Extension	2.06 in
Outline Drawing	612-0078-DC124		

This is an uncontrolled document once printed or downloaded and is subject to change without notice. Date Created:10/12/2021



- NOTES:
 1) MAXIMUM FACE RUNOUT .004 T.I.R.
 2) MAXIMUM PILOT ECCENTRICITY .004 T.I.R.
 3) PERMISSIBLE SHAFT RUNOUT .002 T.I.R.
 4) GASKETS THROUGHOUT

DC162	13.82	11.76	5.85	180	1	2500
DC165	13.32	11.26	5.35	90	1	2500
DC132	14.82	12.76	6.85	180	1	1750
DC124	14.82	12.76	6.85	90	1	1750
CATALOG No.	"C"	"L"	"AD"	VOLTS	H.P.	RPM

02 DC165 WAS DC141; DC162 WAS DC138, PER EPC REQUEST		IPG 9/25/2012	TOLERANCES UNLESS SPECIFIED		Century	DRAWN SAD 8/12/2012
01 ADDED 1.875 SHAFT DIM PER NEMA STANDARD, ADDED .07 & 1.94 REF DIMS, ADDED 2.75 DIM BASE LOCATION, RELEASED TO PRODUCTION		IPG 9/19/2012	DEC	INCHES		CHK
C REF 031879.00, DC124, DC132, DC138, DC141		SAD 8/12/2012	XX	±.03	TITLE OUTLINE	SCALE 1:2
NO REVISION		BY & DATE	XXX	±.005	48 FRAME DC	REF 031975
		CHK LANG ±1/2"	XXXX	±.0005	MATL	FMF
THIRD ANGLE PROJECTION		RFP	PREV	FINISH	SIZE	PAGE OF
		NETWORK FILE NAME 612-0078	SIZE B	DRAWING NO 612-0078	REV 02	