

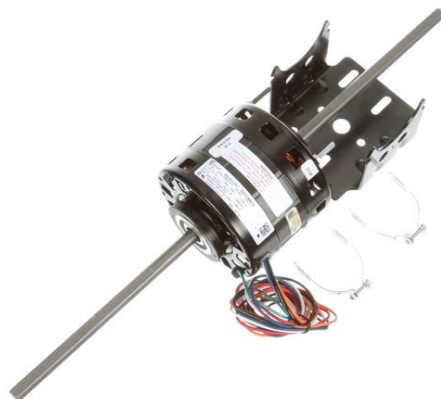
PRODUCT INFORMATION PACKET



Model No: DCL4423

Catalog No: DCL4423

Fan Coil & Air Conditioner Motor, 1/6, 1/10, 1/12, 1/15 HP, 1 Ph, 60 Hz, 115 V, 1550 RPM, 4 Speed,
42 Frame, OAO



Regal and Century are trademarks of Regal Rexnord Corporation or one of its affiliated companies.
©2024 Regal Rexnord Corporation, All Rights Reserved. MC017097E





Nameplate Specifications

Phase	1	Output HP	1/6, 1/10, 1/12, 1/15 Hp
Output KW	0.13 kW	Voltage	115 V
Speed	1550 rpm	Service Factor	1.0
Frame	42Y	Enclosure	Open Air Over
Thermal Protection	Automatic	Ambient Temperature	40 °C
Frequency	60 Hz	Current	4.0 A
Duty	Continuous	Insulation Class	B
UL	Recognized	CSA	Y
CE	N	Number of Speeds	4

Technical Specifications

Electrical Type	Shaded Pole	Starting Method	Across The Line
Poles	4	Rotation	Counterclockwise Lead End
Mounting	Resilient Rings	Motor Orientation	Horizontal
Drive End Bearing	Sleeve	Opp Drive End Bearing	Sleeve
Frame Material	Na	Shaft Type	Flat
Overall Length	20.92 in	Shaft Diameter	0.500 in
Shaft Extension	8.5x.5x8.5 in		
Connection Drawing	618126	Outline Drawing	DCL4423-S01

This is an uncontrolled document once printed or downloaded and is subject to change without notice. Date Created:04/24/2024

GENERAL INFORMATION:

SHAFT RUNOUT: .001 [.03] T.I.R. PER INCH LENGTH OF EXTENSION

END PLAY: .010 [.25] TO .063 [1.60]

BEARINGS: SLEEVE

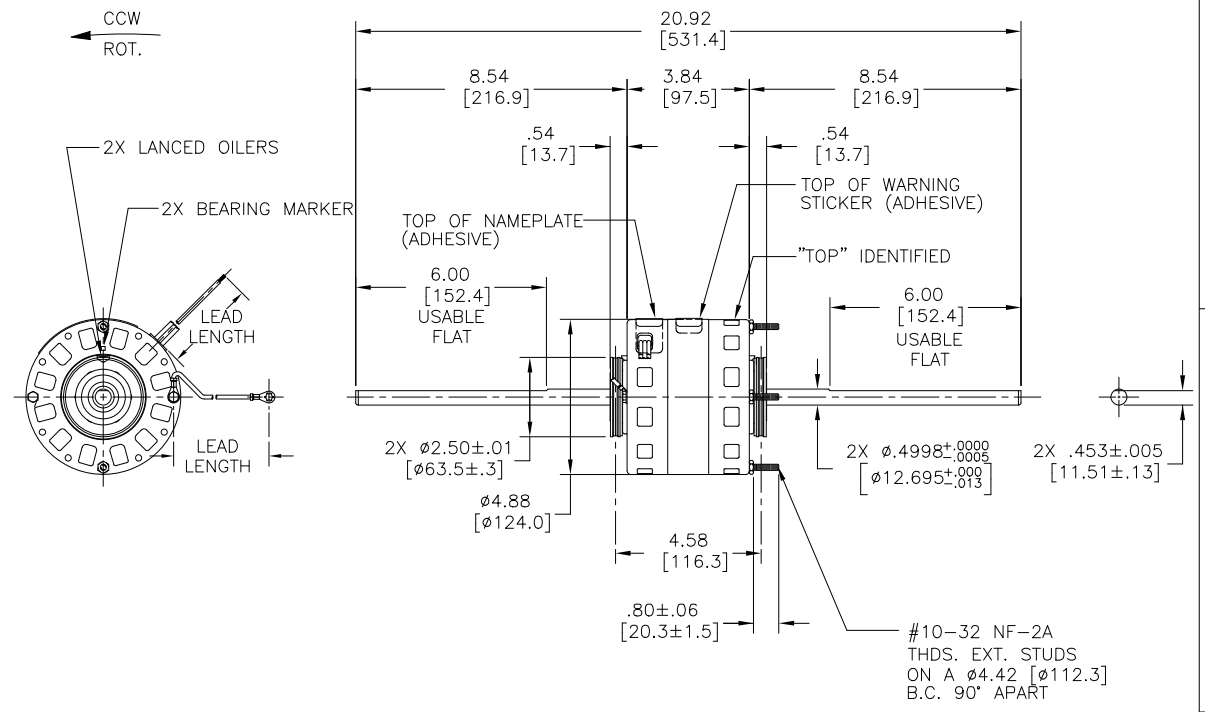
MOUNTING POSITION: HORIZONTAL

ELECTRICAL DATA:

OVERLOAD PROTECTOR: AUTOMATIC RESET (SENSATA 7AM 304)

LEADS: NO. 18 GA., .03 [.8] THK., 125°C INSUL.

GROUND LEAD: NO. 18 GA., .03 [.8] THK. GREEN INSUL.



SEE NOTE 2

NAMEPLATE DATA:	EXTERNAL CONNECTION DIAGRAM
MODEL NO.: B42A90A01 CUST. P/N: [] HP: 1/6,1/10,1/12,1/15 ROT.: CCWLE RPM: 1550/4 SPD TYPE: FE FRAME: 42Y VOLTS: 115 PH: 1 AMPS: 4.0 HZ: 60 INS.: B AMB.: 40°C DUTY: AIR OVER CAP: - UL & CSA LOGO THERMALLY PROTECTED TYPE C	

COLOR	WIRE GAUGE	TERMINAL OR STRIP LENGTH
GREEN (GRD)	5.5/6.5 [140/165]	#10 EYELET
RED	29.0/31.0 [737/787]	.25 [6.4] SKIN
ORANGE	29.0/31.0 [737/787]	.25 [6.4] SKIN
BLUE	29.0/31.0 [737/787]	.25 [6.4] SKIN
BLACK	29.0/31.0 [737/787]	.25 [6.4] SKIN
WHITE	29.0/31.0 [737/787]	.25 [6.4] SKIN
COLOR	LENGTH	TERMINAL OR STRIP LENGTH

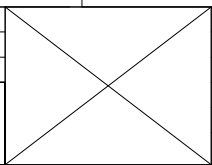
NOTE:

1. MOUNTING BASE AND 2X MOUNTING CLAMP ASSEMBLIES TO BE SHIPPED SEPARATELY IN EACH CARTON WITH MOTOR.
2. DISTRIBUTION PART NUMBER: DCL4423
GRAINGER PART NUMBER: 4UU51

MAIN FRAME - OLE	OPEN
END FRAME - OLE	OPEN
MAIN FRAME - LE	OPEN
END FRAME - LE	OPEN

PERFORMANCE CURVE NO.	TORQUE @ 1075 RPM (25°C)	APPROVED SAMPLE	UL COMPONENT	CSA		
	RPM (25°C)		FILE #	CCN #	FILE #	CLASS #
C30180	9.6 OZ. FT.	A7009D	E27885	XEWR2	LR43341	4211-01

LEAD DATA		
DRAWING REVISION	REVISION BY	DATE
H	J. RUPERT	05-19-2023
ECO	APPROVED BY	DATE
ECR-0225873	J. RUPERT	05-19-2023
ECO DESCRIPTION		
CHANGED UL FILE NUMBER		

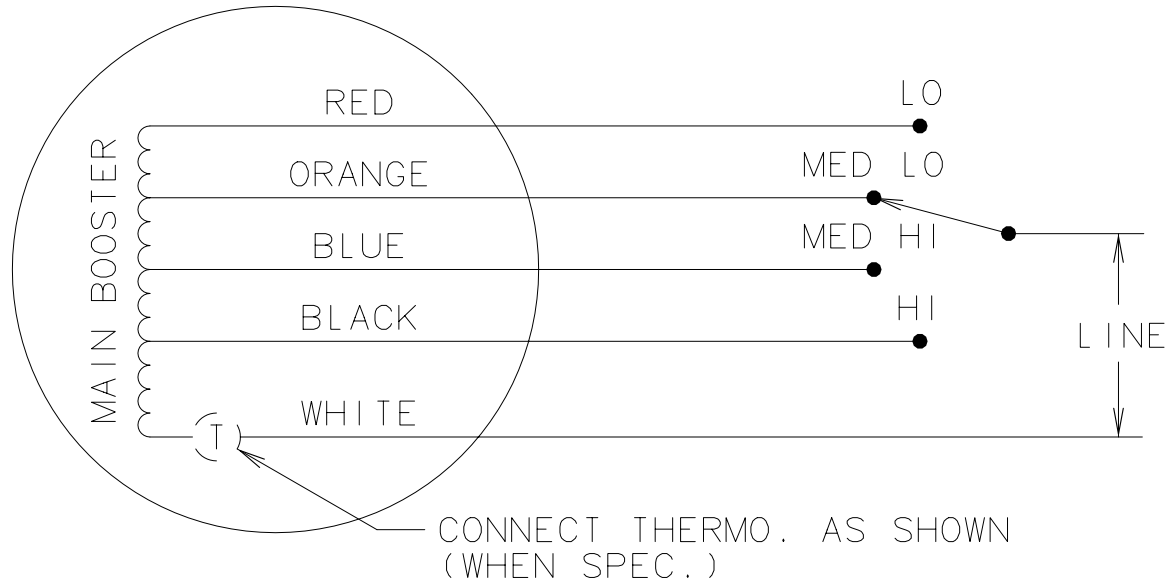


ENCLOSURE		CUST.	DISTRIBUTION SERVICE
DRAWN BY:	J. WILLIAMS		
DATE:	08-11-2004		
APPROVED BY:	J. WILLIAMS		
DATE:	08-12-2004		
REFERENCE	11927-051		
THIRD ANGLE PROJECTION			
Regal Beloit America, Inc.			
DESCRIPTION			
MODEL-RFHP-42FR			
OUTLINE			
MATERIAL	PROCESS/FINISH		
SIZE	DWG NO		
C	DCL4423		
			SHEET 1


CONFIDENTIAL: THIS DRAWING AND ITS INFORMATION ARE THE EXCLUSIVE AND CONFIDENTIAL PROPERTY OF A.O. SMITH CORP. AND ARE NOT TO BE DISCLOSED, DUPLICATED, DISTRIBUTED OR OTHERWISE USED WITHOUT THE WRITTEN CONSENT OF A.O. SMITH CORP. - ALL RIGHTS RESERVED

QUALITY CONTROL NOTE

TO CHECK THE WINDINGS FOR OPENS, VERIFY THE CONTINUITY BETWEEN THE WHITE & RED LEADS.



4 SPEED

	DATE	CHANGED FROM	NOTICE	MATERIAL	PROCESS	A.O. SMITH A DIVISION OF A.O. SMITH CORPORATION ELECTRICAL PRODUCTS COMPANY TIPP CITY, OHIO		 COPYRIGHT 1992
				FIRST MODEL 326P152	SHEET 1 OF 1	DRAWN BY BRADEN	NPN NO. 17889	DESCRIPTION FR.42 TYPE FE DIAG. MLW
				NO. OF MODELS	REFERENCE	SCALE NONE	APPROVED BY	REL. DATE 12-15-87
				LIMITS UNLESS OTHERWISE SPECIFIED: FRACTIONS ± NONE ANGLES ± NONE DECIMALS ± NONE			GROUP CODE FR42	FILE CODE CONEXT
								PART NO. 618126

* CADAM DWG. -DO NOT ALTER

B#10 (EXT. CONN.)