

PRODUCT INFORMATION PACKET



Model No: FC3076F
Catalog No: FC3076F

HEATMASTER® Condenser Fan Motor, 3/4 HP, 3 Ph, 60 Hz, 200-230/460 V, 1140 RPM, 1 Speed, 48 Frame,
OPEN



Regal and Century are trademarks of Regal Rexnord Corporation or one of its affiliated companies.
©2023 Regal Rexnord Corporation, All Rights Reserved. MC017097E





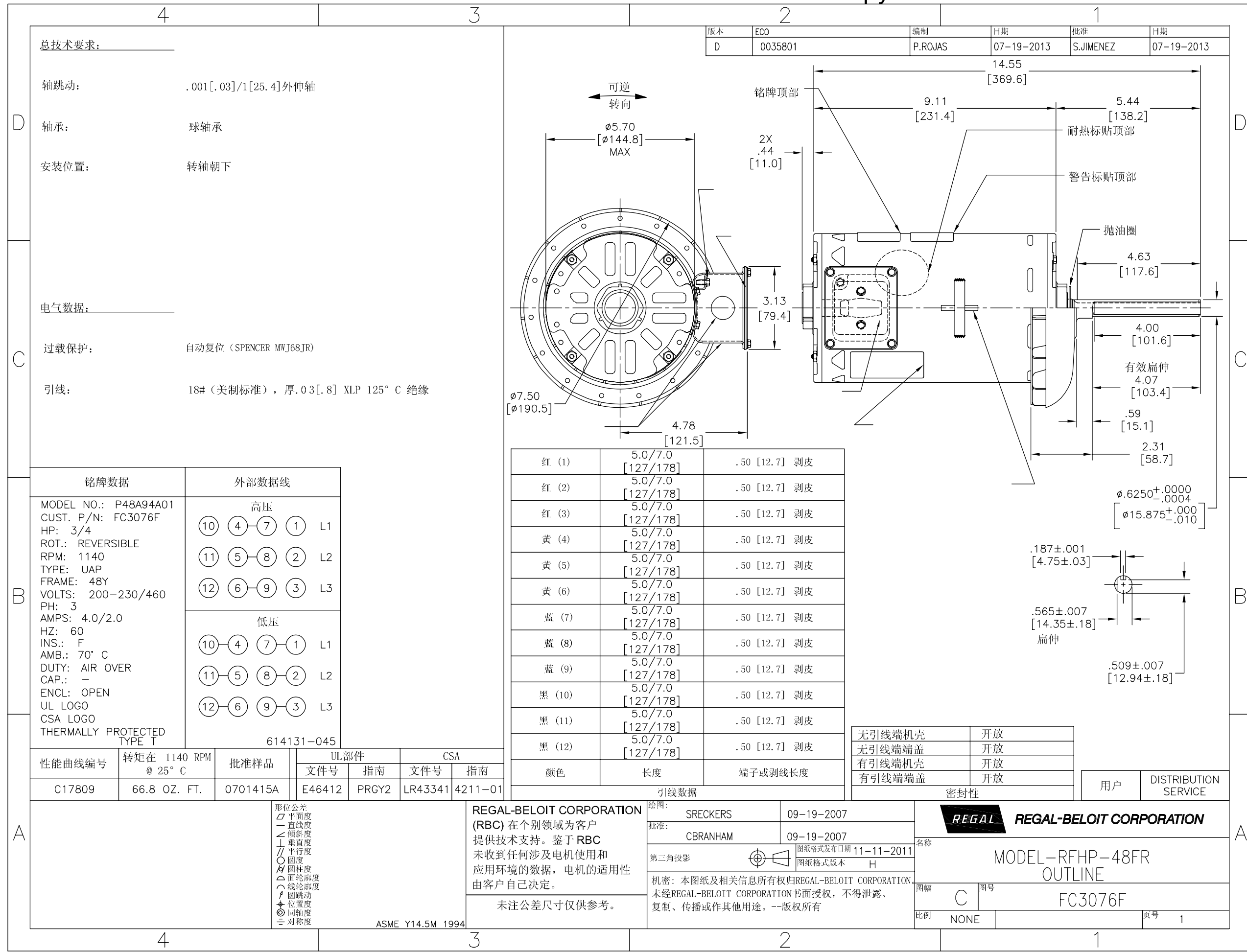
Nameplate Specifications

Output HP	3/4 Hp	Output KW	0.56 kW
Frequency	60 Hz	Voltage	200-230/460 V
Current	4.0/2.0 A	Speed	1140 rpm
Service Factor	1	Phase	3
Duty	Air Over	Insulation Class	F
Frame	48Y	Enclosure	Open Enclosed
Thermal Protection	Automatic	Ambient Temperature	70 °C
UL	Recognized	CSA	Y
CE	N	Number of Speeds	1

Technical Specifications

Electrical Type	Three Phase	Starting Method	Across The Line
Poles	6	Rotation	Reversible
Mounting	Round Belly Band	Motor Orientation	Vertical Shaft Up
Drive End Bearing	Ball	Opp Drive End Bearing	Ball
Frame Material	Rolled Steel	Shaft Type	Keyed
Overall Length	14.99 in	Frame Length	8.50 in
Shaft Diameter	0.625 in	Shaft Extension	4.07 in
Outline Drawing	FC3076F-S01	Connection Drawing	614131-045

This is an uncontrolled document once printed or downloaded and is subject to change without notice. Date Created:02/16/2023



总技术要求:

轴跳动: .001 [.03]/1 [25.4] 外伸轴

轴承: 球轴承

安装位置: 转轴朝下

电气数据:

过载保护: 自动复位 (SPENCER MWJ68JR)

引线: 18# (美制标准), 厚.03 [.8] XLP 125° C 绝缘

铭牌数据	外部数据线
MODEL NO.: P48A94A01 CUST. P/N: FC3076F HP: 3/4 ROT.: REVERSIBLE RPM: 1140 TYPE: UAP FRAME: 48Y VOLTS: 200-230/460 PH: 3 AMPS: 4.0/2.0 HZ: 60 INS.: F AMB.: 70° C DUTY: AIR OVER CAP.: - ENCL: OPEN UL LOGO CSA LOGO THERMALLY PROTECTED TYPE T	<p>高压</p> <p>⑩ ④ ⑦ ① L1</p> <p>⑪ ⑤ ⑧ ② L2</p> <p>⑫ ⑥ ⑨ ③ L3</p> <p>低压</p> <p>⑩ ④ ⑦ ① L1</p> <p>⑪ ⑤ ⑧ ② L2</p> <p>⑫ ⑥ ⑨ ③ L3</p> <p>614131-045</p>

颜色	长度	端子或剥线长度
红 (1)	5.0/7.0 [127/178]	.50 [12.7] 剥皮
红 (2)	5.0/7.0 [127/178]	.50 [12.7] 剥皮
红 (3)	5.0/7.0 [127/178]	.50 [12.7] 剥皮
黄 (4)	5.0/7.0 [127/178]	.50 [12.7] 剥皮
黄 (5)	5.0/7.0 [127/178]	.50 [12.7] 剥皮
黄 (6)	5.0/7.0 [127/178]	.50 [12.7] 剥皮
蓝 (7)	5.0/7.0 [127/178]	.50 [12.7] 剥皮
蓝 (8)	5.0/7.0 [127/178]	.50 [12.7] 剥皮
蓝 (9)	5.0/7.0 [127/178]	.50 [12.7] 剥皮
黑 (10)	5.0/7.0 [127/178]	.50 [12.7] 剥皮
黑 (11)	5.0/7.0 [127/178]	.50 [12.7] 剥皮
黑 (12)	5.0/7.0 [127/178]	.50 [12.7] 剥皮

无引线端机壳	开放
无引线端端盖	开放
有引线端机壳	开放
有引线端端盖	开放

性能曲线编号	转矩在 1140 RPM @ 25° C	批准样品	UL部件	CSA
C17809	66.8 OZ. FT.	0701415A	文件号 指南	文件号 指南
			E46412 PRGY2	LR43341 4211-01

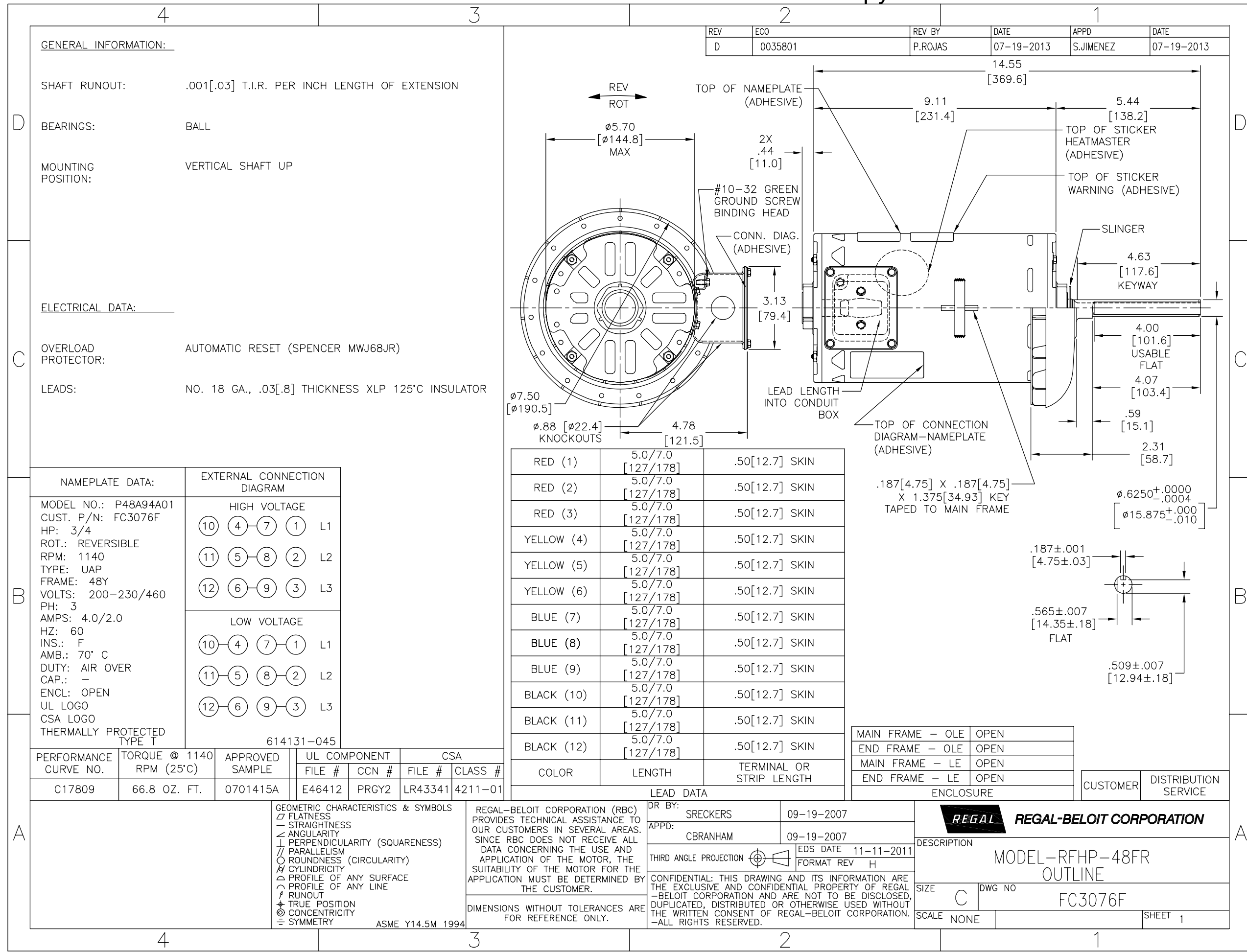
形位公差	ASME Y14.5M 1994
⊥ 垂直度	
∥ 平行度	
⊙ 圆度	
⊘ 圆跳度	
⊙ 位置度	
⊙ 同轴度	
⊙ 对称度	

REGAL-BELOIT CORPORATION (RBC) 在个别领域为客户提供技术支持。鉴于 RBC 未收到任何涉及电机使用和应用环境的数据, 电机的适用性由客户自己决定。

未注公差尺寸仅供参考。

绘图: SRECKERS	09-19-2007
批准: CBRANHAM	09-19-2007
第三角投影	图纸格式发布日期 11-11-2011 图纸格式版本 H
机密: 本图纸及相关信息所有权归REGAL-BELOIT CORPORATION。未经REGAL-BELOIT CORPORATION书面授权, 不得泄露、复制、传播或作其他用途。--版权所有	

REGAL REGAL-BELOIT CORPORATION	
名称 MODEL-RFHP-48FR OUTLINE	
图号 C	图号 FC3076F
比例 NONE	页号 1



GENERAL INFORMATION:

SHAFT RUNOUT: .001[.03] T.I.R. PER INCH LENGTH OF EXTENSION

BEARINGS: BALL

MOUNTING POSITION: VERTICAL SHAFT UP

ELECTRICAL DATA:

OVERLOAD PROTECTOR: AUTOMATIC RESET (SPENCER MWJ68JR)

LEADS: NO. 18 GA., .03[.8] THICKNESS XLP 125°C INSULATOR

REV	ECO	REV BY	DATE	APPD	DATE
D	0035801	P.ROJAS	07-19-2013	S.JIMENEZ	07-19-2013

NAMEPLATE DATA:	EXTERNAL CONNECTION DIAGRAM
MODEL NO.: P48A94A01 CUST. P/N: FC3076F HP: 3/4 ROT.: REVERSIBLE RPM: 1140 TYPE: UAP FRAME: 48Y VOLTS: 200-230/460 PH: 3 AMPS: 4.0/2.0 HZ: 60 INS.: F AMB.: 70° C DUTY: AIR OVER CAP.: - ENCL: OPEN UL LOGO CSA LOGO THERMALLY PROTECTED TYPE T	<p>HIGH VOLTAGE</p> <p>⑩ ④ ⑦ ① L1</p> <p>⑪ ⑤ ⑧ ② L2</p> <p>⑫ ⑥ ⑨ ③ L3</p> <p>LOW VOLTAGE</p> <p>⑩ ④ ⑦ ① L1</p> <p>⑪ ⑤ ⑧ ② L2</p> <p>⑫ ⑥ ⑨ ③ L3</p> <p>614131-045</p>

RED (1)	5.0/7.0 [127/178]	.50[12.7] SKIN
RED (2)	5.0/7.0 [127/178]	.50[12.7] SKIN
RED (3)	5.0/7.0 [127/178]	.50[12.7] SKIN
YELLOW (4)	5.0/7.0 [127/178]	.50[12.7] SKIN
YELLOW (5)	5.0/7.0 [127/178]	.50[12.7] SKIN
YELLOW (6)	5.0/7.0 [127/178]	.50[12.7] SKIN
BLUE (7)	5.0/7.0 [127/178]	.50[12.7] SKIN
BLUE (8)	5.0/7.0 [127/178]	.50[12.7] SKIN
BLUE (9)	5.0/7.0 [127/178]	.50[12.7] SKIN
BLACK (10)	5.0/7.0 [127/178]	.50[12.7] SKIN
BLACK (11)	5.0/7.0 [127/178]	.50[12.7] SKIN
BLACK (12)	5.0/7.0 [127/178]	.50[12.7] SKIN
COLOR	LENGTH	TERMINAL OR STRIP LENGTH

MAIN FRAME - OLE	OPEN
END FRAME - OLE	OPEN
MAIN FRAME - LE	OPEN
END FRAME - LE	OPEN

CUSTOMER	DISTRIBUTION SERVICE
DR BY: SRECKERS 09-19-2007 APPD: CBRANHAM 09-19-2007 EDS DATE 11-11-2011 FORMAT REV H DESCRIPTION: MODEL-RFHP-48FR OUTLINE SIZE C DWG NO FC3076F SCALE NONE SHEET 1	

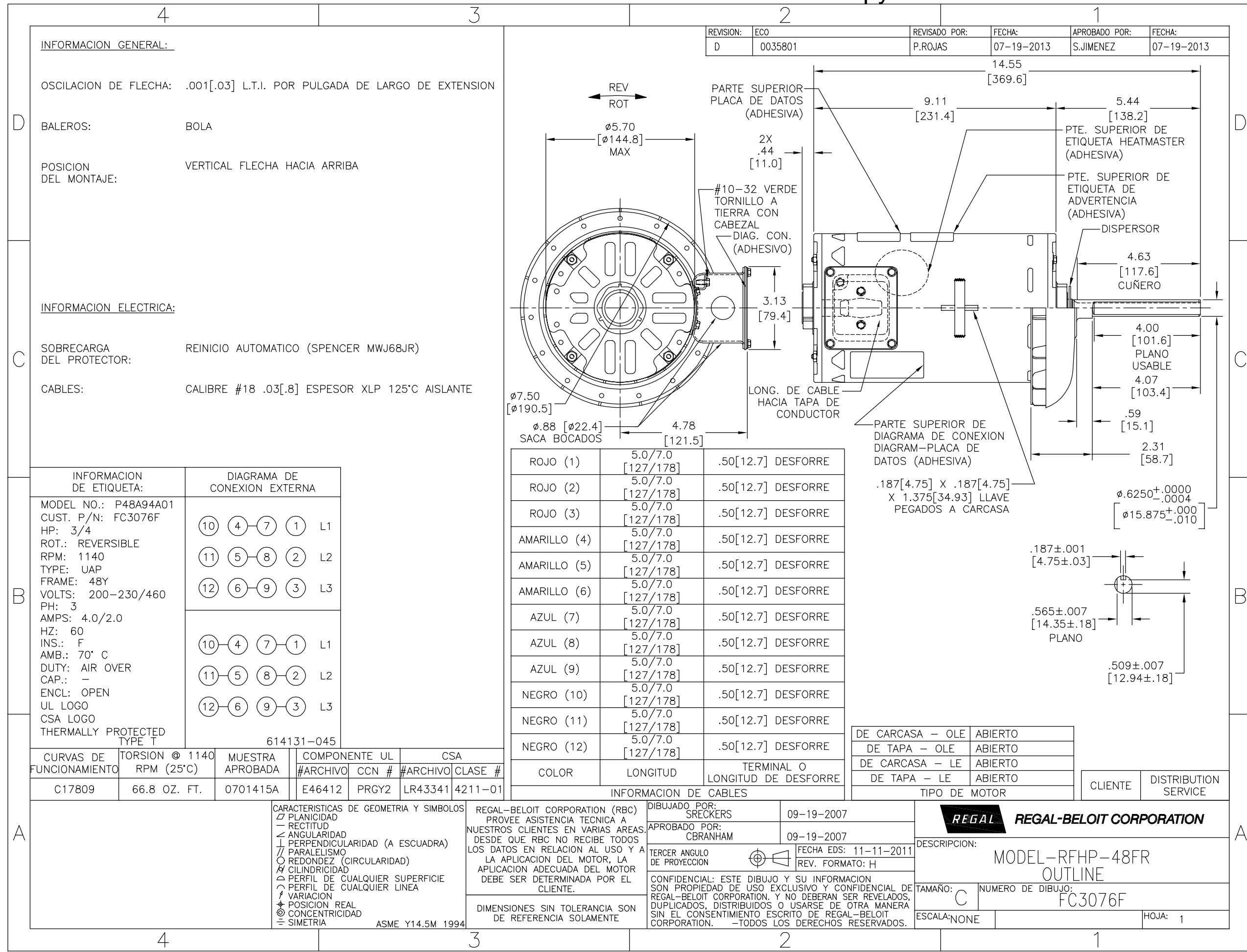
GEOMETRIC CHARACTERISTICS & SYMBOLS

- ▭ FLATNESS
- STRAIGHTNESS
- ∠ ANGULARITY
- ⊥ PERPENDICULARITY (SQUARENESS)
- // PARALLELISM
- ROUNDNESS (CIRCULARITY)
- ⊘ CYLINDRICITY
- △ PROFILE OF ANY SURFACE
- ⌒ PROFILE OF ANY LINE
- ⌒ RUNDOUT
- ⊕ TRUE POSITION
- ⊙ CONCENTRICITY
- = SYMMETRY

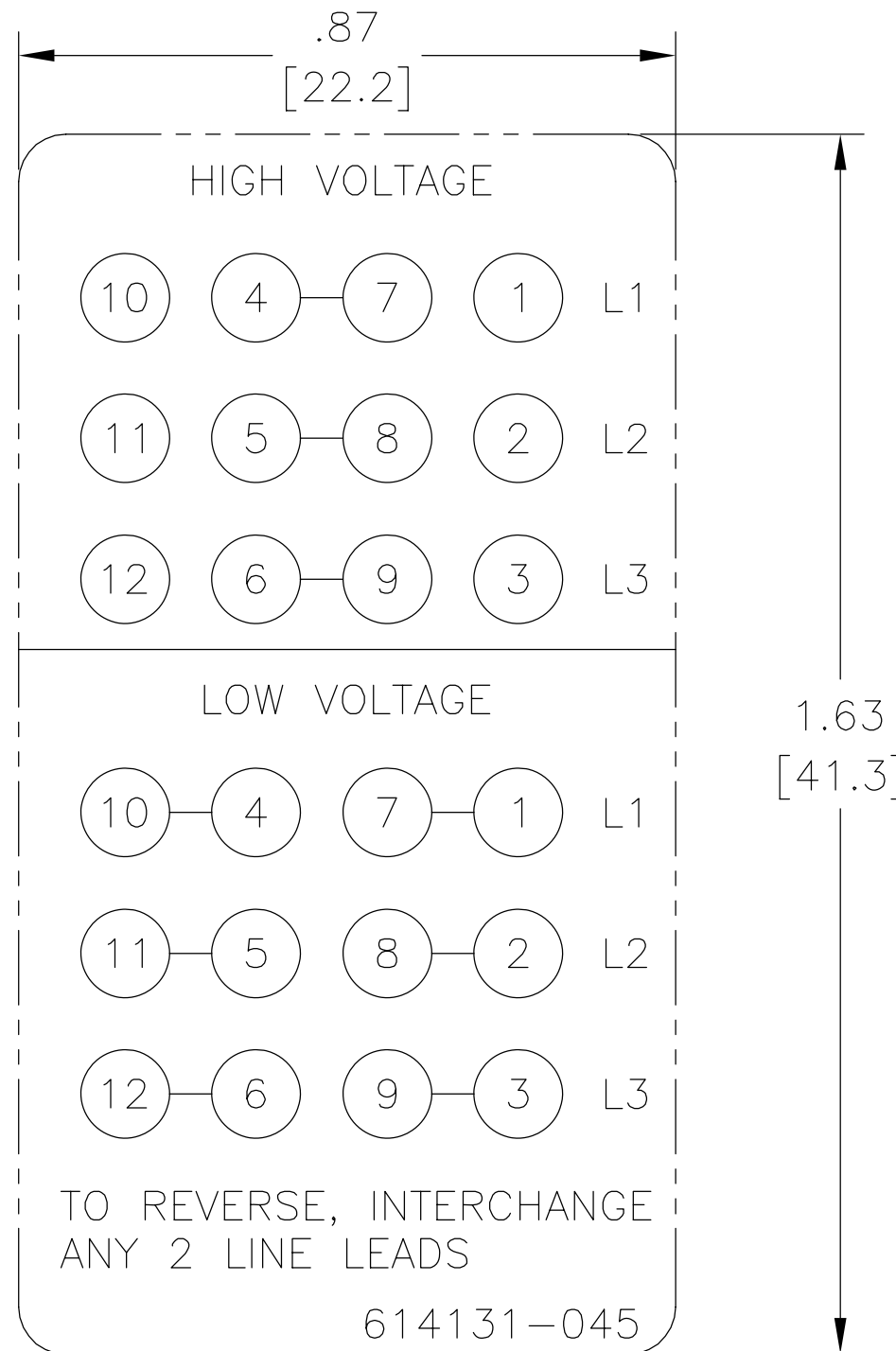
ASME Y14.5M 1994

REGAL-BELOIT CORPORATION (RBC) PROVIDES TECHNICAL ASSISTANCE TO OUR CUSTOMERS IN SEVERAL AREAS. SINCE RBC DOES NOT RECEIVE ALL DATA CONCERNING THE USE AND APPLICATION OF THE MOTOR, THE SUITABILITY OF THE MOTOR FOR THE APPLICATION MUST BE DETERMINED BY THE CUSTOMER.

DIMENSIONS WITHOUT TOLERANCES ARE FOR REFERENCE ONLY.



REV	ECO	REV BY	DATE	APPD	DATE
C	0029048	D.RODRIGUEZ	10-18-2012	J.HESS	10-18-2012



NOTES:

1. FOR USE WITH 614129 NAMEPLATE BLANK
2. — — — — — INDICATES DIMENSION LIMITS
3. DIE TO BE MADE FROM MASTER SUPPLIED BY REGAL
4. DIE MUST PRODUCE A LEGIBLE IMPRESSION.

GEOMETRIC CHARACTERISTICS & SYMBOLS

- ▭ FLATNESS
- STRAIGHTNESS
- ∠ ANGULARITY
- ⊥ PERPENDICULARITY (SQUARENESS)
- // PARALLELISM
- ROUNDNESS (CIRCULARITY)
- ⊘ CYLINDRICITY
- ⌒ PROFILE OF ANY SURFACE
- ⌒ PROFILE OF ANY LINE
- ↗ RUNOUT
- ⊕ TRUE POSITION
- ◎ CONCENTRICITY
- ≡ SYMMETRY

ASME Y14.5M 1994

UNLESS OTHERWISE SPECIFIED
DIM. TOLERANCES ARE AS FOLLOWS:

INCH	±.1	±.02	±.005	±.0005
mm	±0.5	±0.13	±0.013	

ANG. ±.50 DEG

REMOVE BURRS & BREAK SHARP EDGES:
INCH .003-.015 mm 0.1-0.4

CORNER FILLETS TO:
INCH .020 mm 0.5

MACHINE SURFACES:
INCH 125 mm 3.2

METRIC DIMS. SHOWN IN [BRACKETS]

DR BY:	jrupert	02-03-2009
APPD:	triley	02-03-2009
THIRD ANGLE PROJECTION		EDS DATE 11-11-2011 FORMAT REV H
CONFIDENTIAL: THIS DRAWING AND ITS INFORMATION ARE THE EXCLUSIVE AND CONFIDENTIAL PROPERTY OF REGAL-BELOIT CORPORATION AND ARE NOT TO BE DISCLOSED, DUPLICATED, DISTRIBUTED OR OTHERWISE USED WITHOUT THE WRITTEN CONSENT OF REGAL-BELOIT CORPORATION. -ALL RIGHTS RESERVED.		

REGAL-BELOIT CORPORATION	
DESCRIPTION CONN DIAGRAM EXTERNAL	
SIZE A	DWG NO 614131-045
SCALE NONE	SHEET 1