

# PRODUCT INFORMATION PACKET



Model No: FSE1018SF  
Catalog No: FSE1018SF

HEATMASTER® Condenser Fan Motor, 1/6 HP, 1 Ph, 60 Hz, 208-230 V, 825 RPM, 1 Speed, 48 Frame,  
ENCLOSED



Regal and Century are trademarks of Regal Rexnord Corporation or one of its affiliated companies.

©2023 Regal Rexnord Corporation, All Rights Reserved. MC017097E





**Nameplate Specifications**

|                    |            |                     |                  |
|--------------------|------------|---------------------|------------------|
| Output HP          | 1/6 Hp     | Output KW           | 0.13 kW          |
| Frequency          | 60 Hz      | Voltage             | 208-230 V        |
| Current            | 1.1 A      | Speed               | 825 rpm          |
| Service Factor     | 1          | Phase               | 1                |
| Duty               | Air Over   | Insulation Class    | F                |
| Frame              | 48         | Enclosure           | Totally Enclosed |
| Thermal Protection | Automatic  | Ambient Temperature | 70 °C            |
| UL                 | Recognized | CSA                 | Y                |
| CE                 | N          | Number of Speeds    | 1                |

**Technical Specifications**

|                    |                           |                       |                 |
|--------------------|---------------------------|-----------------------|-----------------|
| Electrical Type    | Permanent Split Capacitor | Starting Method       | Across The Line |
| Poles              | 8                         | Rotation              | Reversible      |
| Mounting           | Extended Studs            | Motor Orientation     | Any             |
| Drive End Bearing  | Ball                      | Opp Drive End Bearing | Ball            |
| Frame Material     | Rolled Steel              | Shaft Type            | Double Flat     |
| Overall Length     | 11.49 in                  | Frame Length          | 3.50 in         |
| Shaft Diameter     | 0.500 in                  | Shaft Extension       | 6.5 in          |
| Connection Drawing | 614131-242                | Outline Drawing       | FSE1018SF-S01   |

This is an uncontrolled document once printed or downloaded and is subject to change without notice. Date Created:02/16/2023

GENERAL INFORMATION:

SHAFT RUNOUT: .001 [.03] T.I.R. PER INCH LENGTH OF EXTENSION

END PLAY: .010 TO .063 [.25 TO 1.60]

BEARINGS: SLEEVE

MOUNTING POSITION: ALL ANGLE

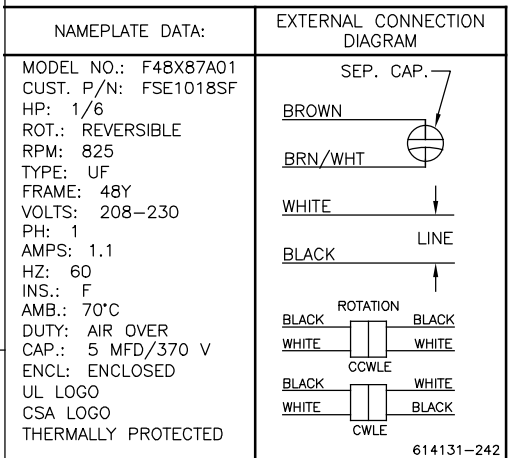
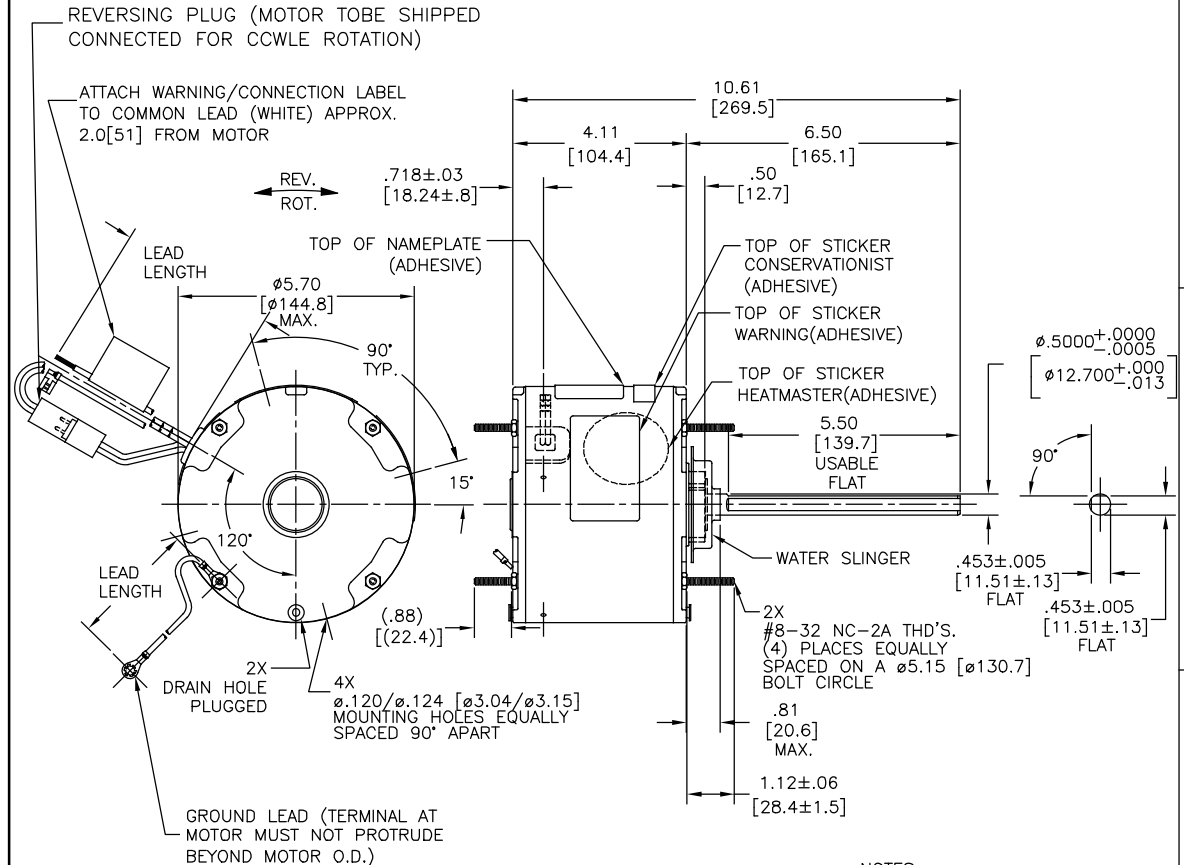
ELECTRICAL DATA:

OVERLOAD PROTECTOR: AUTOMATIC RESET (T.I. 7AM 304)

LINE LEADS: NO. 18 GA., .06 [1.5] THK. XLP 125°C INSUL.

REVERSING LEADS: NO. 18 GA., .03 [.8] THK. XLP 125°C INSUL.

GROUND LEAD: NO. 18 GA., .03 [.8] THK. (GREEN) INSUL.



| PERFORMANCE CURVE NO. | TORQUE @825 RPM (25°C) | APPROVED SAMPLE | UL COMPONENT |       | CSA     |         |
|-----------------------|------------------------|-----------------|--------------|-------|---------|---------|
|                       |                        |                 | FILE #       | CCN # | FILE #  | CLASS # |
| C32577                | 22.2 OZ. FT.           | 0601193A        | E46412       | PRGY2 | LR43341 | 4211-01 |

|                |                       |                          |
|----------------|-----------------------|--------------------------|
| GREEN (GROUND) | 12.0/13.0 [305/330]   | #10 EYELET               |
| BLACK/WHITE    | 3.0/5.0 [76/127]      | REVERSING PLUG           |
| BROWN          | 48.0/51.0 [1219/1295] | .25 [6.35] FLAG          |
| BROWN/WHITE    | 48.0/51.0 [1219/1295] | .25 [6.35] FLAG          |
| WHITE          | 48.0/51.0 [1219/1295] | .50 [12.7] SKIN          |
| BLACK          | 48.0/51.0 [1219/1295] | .50 [12.7] SKIN          |
| COLOR          | LENGTH                | TERMINAL OR STRIP LENGTH |

|                                                                                                                                                                                                                                                                           |          |
|---------------------------------------------------------------------------------------------------------------------------------------------------------------------------------------------------------------------------------------------------------------------------|----------|
| REGAL-BELOIT CORPORATION (RBC) PROVIDES TECHNICAL ASSISTANCE TO OUR CUSTOMERS IN SEVERAL AREAS. SINCE RBC DOES NOT RECEIVE ALL DATA CONCERNING THE USE AND APPLICATION OF THE MOTOR, THE SUITABILITY OF THE MOTOR FOR THE APPLICATION MUST BE DETERMINED BY THE CUSTOMER. |          |
| DIMENSIONS WITHOUT TOLERANCES ARE FOR REFERENCE ONLY.                                                                                                                                                                                                                     |          |
| MAIN FRAME - OLE                                                                                                                                                                                                                                                          | ENCLOSED |
| END FRAME - OLE                                                                                                                                                                                                                                                           | ENCLOSED |
| MAIN FRAME - LE                                                                                                                                                                                                                                                           | ENCLOSED |
| END FRAME - LE                                                                                                                                                                                                                                                            | ENCLOSED |

- NOTES:
1. ATTACH INSTRUCTION SHEET 681572-003 ONTO SHAFT APPROX. 1.0[25] FROM WATER SLINGER (OR 69P9-3 ONLY USED IN MEXICO)
  2. (4) SCREWS 615982-001 & (4) EXTRA HEX NUTS 7555A19H01 TO BE PUT IN A POLYBAG.

| DRAWING REVISION | REVISION BY | DATE       |
|------------------|-------------|------------|
| E                | GELINE ZHAO | 05-24-2019 |
| ECO              | KEYUN GONG  | 05-24-2019 |

ECO DESCRIPTION: SEE ECO

REGAL-BELOIT CORPORATION (RBC) PROVIDES TECHNICAL ASSISTANCE TO OUR CUSTOMERS IN SEVERAL AREAS. SINCE RBC DOES NOT RECEIVE ALL DATA CONCERNING THE USE AND APPLICATION OF THE MOTOR, THE SUITABILITY OF THE MOTOR FOR THE APPLICATION MUST BE DETERMINED BY THE CUSTOMER.

|                        |                  |
|------------------------|------------------|
| DRAWN BY: A. NAJERA    | DATE: 05-03-2011 |
| APPROVED BY: J. RUPERT | DATE: 05-03-2011 |
| PROCESS/FINISH         |                  |
| THIRD ANGLE PROJECTION |                  |

|                                      |           |
|--------------------------------------|-----------|
| Regal Beloit America, Inc.           |           |
| DESCRIPTION: MODEL-RFHP-48FR OUTLINE |           |
| MATERIAL                             |           |
| SIZE DWG NO                          | FSE1018SF |
| SHEET                                | 1         |



NOTES:

1. FOR USE WITH 614129 NAMEPLATE BLANK
2. — — — — — INDICATES DIMENSION LIMITS
3. DIE TO BE MADE FROM MASTER SUPPLIED BY REGAL REXNORD CORPORATION
4. DIE MUST PRODUCE A LEGIBLE IMPRESSION.

|                                                                                                                                                                                                                                                                                                                                                                                                                                                                                                                                                                                                                                                                                 |                          |                    |
|---------------------------------------------------------------------------------------------------------------------------------------------------------------------------------------------------------------------------------------------------------------------------------------------------------------------------------------------------------------------------------------------------------------------------------------------------------------------------------------------------------------------------------------------------------------------------------------------------------------------------------------------------------------------------------|--------------------------|--------------------|
| DRAWING REVISION<br>H                                                                                                                                                                                                                                                                                                                                                                                                                                                                                                                                                                                                                                                           | REVISION BY<br>J. RUPERT | DATE<br>03-16-2022 |
| ECO<br>NMR-0213140                                                                                                                                                                                                                                                                                                                                                                                                                                                                                                                                                                                                                                                              | APPROVED BY<br>J. RUPERT | DATE<br>03-16-2022 |
| ECO DESCRIPTION<br>REVISED FOR UP ISSUED                                                                                                                                                                                                                                                                                                                                                                                                                                                                                                                                                                                                                                        |                          |                    |
| <small>COPYRIGHT REGAL BELOIT AMERICA, INC. ALL RIGHTS RESERVED. PROPRIETARY AND CONFIDENTIAL INFORMATION - THIS DOCUMENT IS THE PROPERTY OF REGAL BELOIT AMERICA, INC. ("OWNER") AND CONTAINS OWNER'S PROPRIETARY INFORMATION. ANY PERSON, CORPORATION OR OTHER FIRM RECEIVING IT IS DEEMED, BY RECEIVING IT, TO AGREE THAT IT, AND/OR ANY PART OF IT, SHALL NOT BE DISCLOSED TO ANY PERSON, CORPORATION OR OTHER ENTITY, DUPLICATED, AND/OR USED, EXCEPT AS EXPRESSLY APPROVED IN WRITING IN ADVANCE BY OWNER. THIS DOCUMENT SHALL BE RETURNED TO OWNER UPON REQUEST. IT MAY BE SUBJECT TO CERTAIN RESTRICTIONS UNDER APPLICABLE EXPORT CONTROL LAWS AND REGULATIONS.</small> |                          |                    |

|                                                               |         |           |       |
|---------------------------------------------------------------|---------|-----------|-------|
| TOLERANCES UNLESS OTHERWISE SPECIFIED                         |         |           |       |
| DEC.                                                          | INCH    | mm        | ANGLE |
| .X                                                            | ±0.1    | [±2.5]    | ±0.5° |
| .XX                                                           | ±0.02   | [±0.51]   |       |
| .XXX                                                          | ±0.005  | [±0.127]  |       |
| .XXXX                                                         | ±0.0005 | [±0.0127] |       |
| REMOVE BURRS & BREAK SHARP EDGES .003/.015 [0.076/.381] X 45° |         |           |       |
| CORNER FILLETS R.02 [.51]                                     |         |           |       |
| MACHINED SURFACES                                             |         |           |       |
|                                                               | INCH    | mm        |       |
|                                                               | 125     | 3.2       |       |
| mm SHOWN IN [BRACKETS]                                        |         |           |       |

|                     |                        |
|---------------------|------------------------|
| DRAWN BY:<br>YL     | THIRD ANGLE PROJECTION |
| DATE:<br>04-15-2011 |                        |
| APPROVED BY:<br>HZ  |                        |
| DATE:<br>04-15-2011 |                        |
| REFERENCE           |                        |

|                                               |                  |
|-----------------------------------------------|------------------|
| Regal Beloit America, Inc.                    |                  |
| DESCRIPTION<br>CONNECTION DIAGRAM<br>EXTERNAL |                  |
| MATERIAL                                      | PROCESS/FINISH   |
| SIZE<br>A                                     | DWG NO<br>4 of 4 |
| 614131-242                                    |                  |
| SHEET<br>1                                    |                  |