

PRODUCT INFORMATION PACKET



Model No: FSE1028SF
Catalog No: FSE1028SF

HEATMASTER® Condenser Fan Motor, 1/4 HP, 1 Ph, 60 Hz, 208-230 V, 825 RPM, 1 Speed, 48 Frame, TEAO



Regal and Century are trademarks of Regal Rexnord Corporation or one of its affiliated companies.
©2025 Regal Rexnord Corporation, All Rights Reserved. MC017097E





Nameplate Specifications

| | | | |
|--------------------|------------|---------------------|---------------------------|
| Phase | 1 | Output HP | 1/4 Hp |
| Output KW | 0.19 kW | Voltage | 208-230 V |
| Speed | 825 rpm | Service Factor | 1.0 |
| Frame | 48 | Enclosure | Totally Enclosed Air Over |
| Thermal Protection | Automatic | Ambient Temperature | 70 °C |
| Frequency | 60 Hz | Current | 1.5 A |
| Duty | Air Over | Insulation Class | F |
| UL | Recognized | CSA | Y |
| CE | N | Number of Speeds | 1 |

Technical Specifications

| | | | |
|-------------------|---------------------------|-----------------------|-----------------|
| Electrical Type | Permanent Split Capacitor | Starting Method | Across The Line |
| Poles | 8 | Rotation | Reversible |
| Mounting | Extended Studs | Motor Orientation | Any |
| Drive End Bearing | Ball | Opp Drive End Bearing | Ball |
| Frame Material | Rolled Steel | Shaft Type | Double Flat |
| Overall Length | 11.99 in | Frame Length | 4.00 in |
| Shaft Diameter | 0.500 in | Shaft Extension | 6.5 in |
| Outline Drawing | FSE1028SF_FA | Connection Drawing | 614131-242 |

This is an uncontrolled document once printed or downloaded and is subject to change without notice. Date Created:05/06/2025

GENERAL INFORMATION:

SHAFT RUNOUT: .001 [.03] T.I.R. PER INCH LENGTH OF EXTENSION

BEARINGS: BALL

MOUNTING POSITION: ALL ANGLE

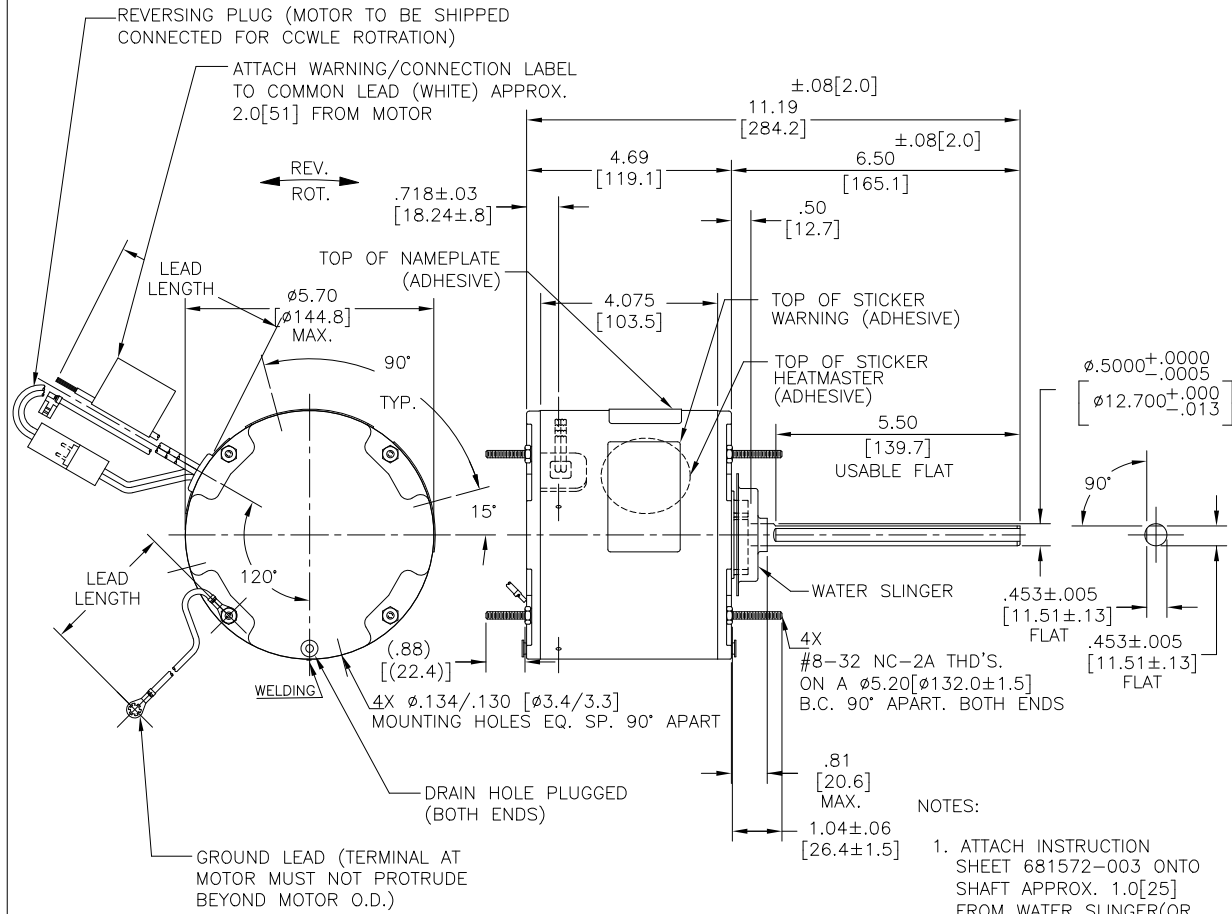
ELECTRICAL DATA:

OVERLOAD PROTECTOR: AUTOMATIC RESET (T.I. 7AM 304)

LINE LEADS: NO. 18 GA., .06 [1.5] THK. XLP 125°C INSUL.

REVERSING LEADS: NO. 18 GA., .03 [.8] THK. XLP 125°C INSUL.

GROUND LEAD: NO. 18 GA., .03 [.8] THK. (GREEN) INSUL.



- NOTES:
1. ATTACH INSTRUCTION SHEET 681572-003 ONTO SHAFT APPROX. 1.0[25] FROM WATER SLINGER (OR 69P9-3 ONLY USED IN MEXICO)
 2. (4)SCREWS N194P1504B9 & (4) EXTRA HEX NUTS N238P15B9 TO BE PUT IN A POLYBAG.
 3. ALL LABEL READ FROM LE.
 4. SPRING SHIM/THRUST WASHER IN LE SIDE.

REGAL-BELOIT CORPORATION (RBC) PROVIDES TECHNICAL ASSISTANCE TO OUR CUSTOMERS IN SEVERAL AREAS. SINCE RBC DOES NOT RECEIVE ALL DATA CONCERNING THE USE AND APPLICATION OF THE MOTOR, THE SUITABILITY OF THE MOTOR FOR THE APPLICATION MUST BE DETERMINED BY THE CUSTOMER.

DIMENSIONS WITHOUT TOLERANCES ARE FOR REFERENCE ONLY.

| | |
|------------------|----------|
| MAIN FRAME - OLE | ENCLOSED |
| END FRAME - OLE | ENCLOSED |
| MAIN FRAME - LE | ENCLOSED |
| END FRAME - LE | ENCLOSED |

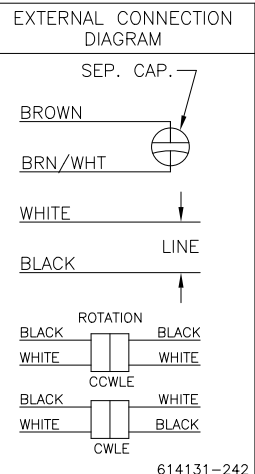
CUSTOMER DISTRIBUTION SERVICE

SAMPLE SM19-358
NAMEPLATE DATA:

MODEL NO.:5KCP39KFDD664S
CUST. P/N: FSE1028SF
HP: 1/4
ROT.: REVERSIBLE
RPM: 825
TYPE: UF
FRAME: 48
VOLTS: 208-230
PH: 1
AMPS: 1.5
HZ: 60
INS.: F
AMB.: 70°C
DUTY: AIR OVER
CAP.: 5 MFD/370V
THERMALLY PROTECTED

REGAL
E27885

MADE IN INDIA



| COLOR | LENGTH | TERMINAL OR STRIP LENGTH |
|----------------|-----------------------|--------------------------|
| GREEN (GROUND) | 12.0/13.0 [305/330] | #10 EYELET |
| BLACK/WHITE | 3.0/5.0 [76/127] | REVERSING PLUG |
| BROWN | 48.0/51.0 [1219/1295] | .25 [6.4] FLAG |
| BROWN/WHITE | 48.0/51.0 [1219/1295] | .25 [6.4] FLAG |
| WHITE | 48.0/51.0 [1219/1295] | .50 [12.7] SKIN |
| BLACK | 48.0/51.0 [1219/1295] | .50 [12.7] SKIN |

LEAD DATA

| | | |
|--|-------------|----------|
| DRAWING REVISION | REVISION BY | DATE |
| C | MG | 08-04-22 |
| ECD | APPROVED BY | DATE |
| ECR-0216351 | LS | 08-04-22 |
| ECO DESCRIPTION | | |
| ENERGY CONSERVATIONIST STICKER IS REMOVED | | |
| <small> COPYRIGHT REGAL-BELOIT AMERICA, INC. ALL RIGHTS RESERVED. PROPRIETARY AND CONFIDENTIAL INFORMATION - THIS DOCUMENT IS THE PROPERTY OF REGAL-BELOIT AMERICA, INC. (OWNER) AND CONTAINS OWNER'S PROPRIETARY INFORMATION. ANY PERSON, CORPORATION OR OTHER ENTITY RECEIVING IT IS DEMAND, BY RECEIVING IT, TO AGREE THAT IT, AND/OR ANY PART OF IT, SHALL NOT BE DISCLOSED TO ANY PERSON, CORPORATION OR OTHER ENTITY, DUPLICATED, AND/OR USED, EXCEPT AS EXPRESSLY APPROVED IN WRITING IN ADVANCE BY OWNER. THIS DOCUMENT SHALL BE RETURNED TO OWNER UPON REQUEST. IT MAY BE SUBJECT TO CERTAIN RESTRICTIONS UNDER APPLICABLE EXPORT CONTROL LAWS AND REGULATIONS. </small> | | |

ENCLOSURE

| | |
|------------------------|--------------|
| DRAWN BY: | DATE: |
| MK | 07.10.19 |
| APPROVED BY: | DATE: |
| LS | 07.10.19 |
| PROCESS/FINISH | MATERIAL |
| THIRD ANGLE PROJECTION | SIZE DWG NO |
| C | FSE1028SF_FA |

| | |
|----------------------------|--------------|
| Regal Beloit America, Inc. | |
| DESCRIPTION | |
| MODEL-RFHP-48FR OUTLINE | |
| SIZE | DWG NO |
| C | FSE1028SF_FA |
| SHEET | 1 |



NOTES:

1. FOR USE WITH 614129 NAMEPLATE BLANK
2. — — — — — INDICATES DIMENSION LIMITS
3. DIE TO BE MADE FROM MASTER SUPPLIED BY REGAL REXNORD CORPORATION
4. DIE MUST PRODUCE A LEGIBLE IMPRESSION.

| | | |
|-----------------------|--------------------------|--------------------|
| DRAWING REVISION H | REVISION BY J. RUPERT | DATE 03-16-2022 |
| ECO NMR-0213140 | APPROVED BY J. RUPERT | DATE 03-16-2022 |

ECO DESCRIPTION
REVISED FOR UP ISSUED

COPYRIGHT REGAL BELOIT AMERICA, INC. ALL RIGHTS RESERVED. PROPRIETARY AND CONFIDENTIAL INFORMATION - THIS DOCUMENT IS THE PROPERTY OF REGAL BELOIT AMERICA, INC. ("OWNER") AND CONTAINS OWNER'S PROPRIETARY INFORMATION. ANY PERSON, CORPORATION OR OTHER FIRM RECEIVING IT IS DEEMED, BY RECEIVING IT, TO AGREE THAT IT, AND/OR ANY PART OF IT, SHALL NOT BE DISCLOSED TO ANY PERSON, CORPORATION OR OTHER ENTITY, DUPLICATED, AND/OR USED, EXCEPT AS EXPRESSLY APPROVED IN WRITING IN ADVANCE BY OWNER. THIS DOCUMENT SHALL BE RETURNED TO OWNER UPON REQUEST. IT MAY BE SUBJECT TO CERTAIN RESTRICTIONS UNDER APPLICABLE EXPORT CONTROL LAWS AND REGULATIONS.

| | | | |
|---|---------|-----------|-------|
| TOLERANCES UNLESS OTHERWISE SPECIFIED | | | |
| DEC. | INCH | mm | ANGLE |
| .X | ±0.1 | [±2.5] | ±0.5° |
| .XX | ±0.02 | [±0.51] | |
| .XXX | ±0.005 | [±0.127] | |
| .XXXX | ±0.0005 | [±0.0127] | |
| REMOVE BURRS & BREAK SHARP EDGES .003/.015 [0.076/.381] X 45° | | | |
| CORNER FILLETS R.02 [.51] | | | |
| MACHINED SURFACES | | | |
| | INCH | mm | |
| | 125 | 3.2 | |
| mm SHOWN IN [BRACKETS] | | | |

| | |
|------------------------|--|
| DRAWN BY: YL | |
| DATE: 04-15-2011 | |
| APPROVED BY: HZ | |
| DATE: 04-15-2011 | |
| REFERENCE | |
| THIRD ANGLE PROJECTION | |

| | |
|---|------------------|
| Regal Beloit America, Inc. | |
| DESCRIPTION CONNECTION DIAGRAM EXTERNAL | |
| MATERIAL | PROCESS/FINISH |
| SIZE A | DWG NO 4 of 4 |
| 614131-242 | |
| SHEET 1 | |