

PRODUCT INFORMATION PACKET



Model No: FY1106V1

Catalog No: FY1106V1

Condenser Fan Motor, 1 HP, 1 Ph, 60/50 Hz, 200-230/460 V, 1200 RPM, 56Y Frame, SEMI ENCLOSED



Regal and Century are trademarks of Regal Rexnord Corporation or one of its affiliated companies.
©2025 Regal Rexnord Corporation, All Rights Reserved. MC017097E





Nameplate Specifications

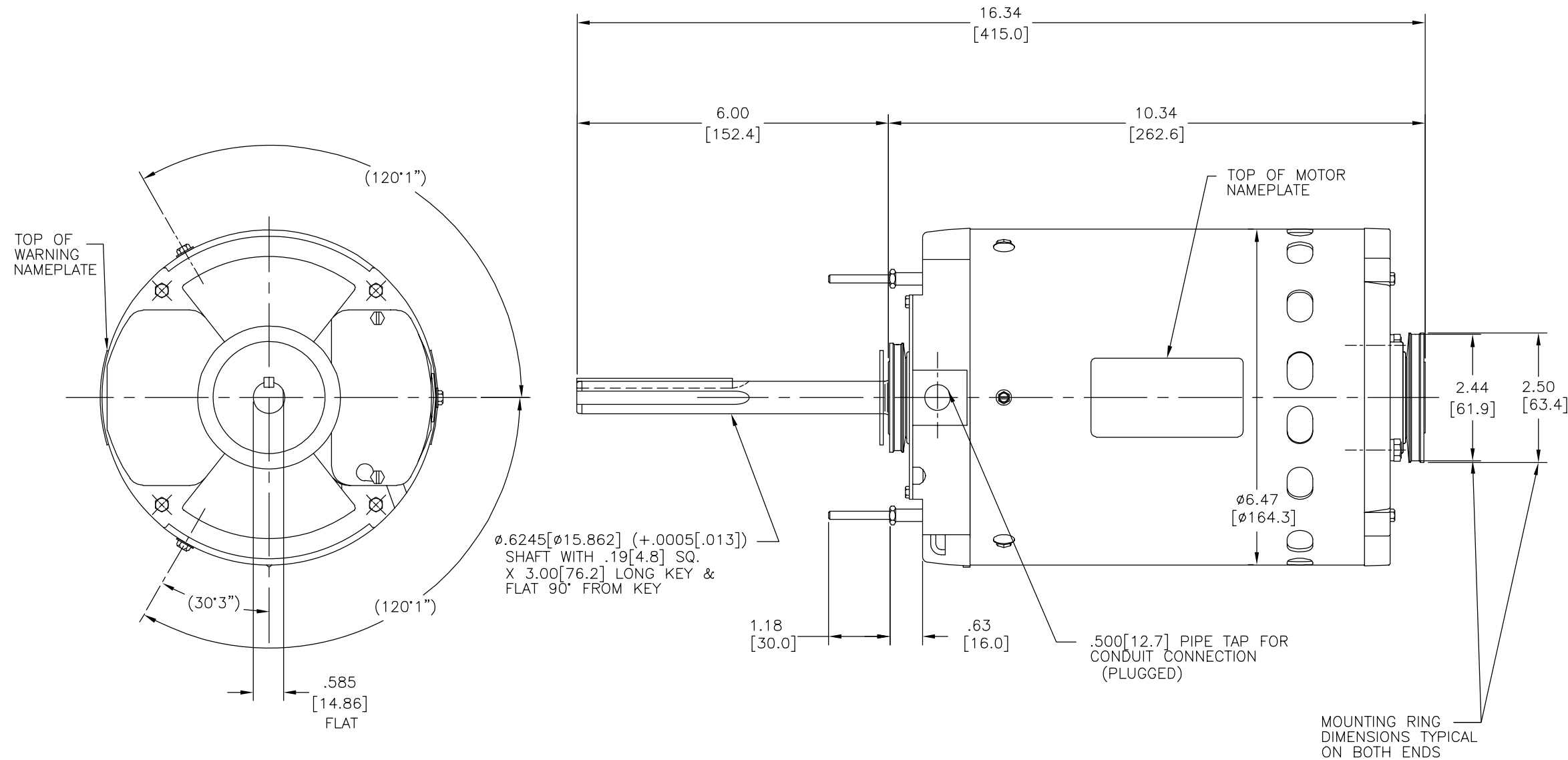
Phase	1	Output HP	1 Hp
Output KW	0.75 kW	Voltage	200-230/460 V
Speed	1075 rpm	Service Factor	1
Frame	56Y	Enclosure	Semi Enclosed
Thermal Protection	Automatic	Ambient Temperature	60 °C
Frequency	60/50 Hz	Current	5/2.5 A
Duty	Continuous	Insulation Class	B
UL	No	CSA	Y
CE	N	Number of Speeds	1

Technical Specifications

Electrical Type	Permanent Split Capacitor	Starting Method	Across The Line
Poles	6	Rotation	Reversible
Mounting	Resilient Base	Drive End Bearing	Ball
Opp Drive End Bearing	Ball	Frame Material	Rolled Steel
Shaft Type	Keyed	Overall Length	16.34 in
Frame Length	7.19 in	Shaft Diameter	0.625 in
Shaft Extension	6.00 in		
Outline Drawing	11700-003	Connection Drawing	619566-003

This is an uncontrolled document once printed or downloaded and is subject to change without notice. Date Created:06/18/2025

REV	ECO	REV BY	DATE	APPD	DATE
C	0025377	H.ZHANG	04-16-2012	B.SHEN	04-16-2012



GEOMETRIC CHARACTERISTICS & SYMBOLS

- ▭ FLATNESS
- STRAIGHTNESS
- ∠ ANGULARITY
- ⊥ PERPENDICULARITY (SQUARENESS)
- // PARALLELISM
- ROUNDNESS (CIRCULARITY)
- ⊘ CYLINDRICITY
- △ PROFILE OF ANY SURFACE
- ∩ PROFILE OF ANY LINE
- ↗ RUNOUT
- ⊕ TRUE POSITION
- ◎ CONCENTRICITY
- ≡ SYMMETRY

ASME Y14.5M 1994

UNLESS OTHERWISE SPECIFIED DIM. TOLERANCES ARE AS FOLLOWS:

INCH	X	XX	XXX	XXXX
	±.1	±.02	±.005	±.0005
mm	±0.5	±0.13	±0.013	

ANG. ±.50 DEG
REMOVE BURRS & BREAK SHARP EDGES:
INCH .003-.015 mm 0.1-0.4
CORNER FILLETS TO:
INCH .020 mm 0.5
MACHINE SURFACES:
INCH 125 mm 3.2

METRIC DIMS. SHOWN IN [BRACKETS]

DR BY: BLANKENSHIP 08-06-2004

APPD:

THIRD ANGLE PROJECTION

EDS DATE 11-11-2011
FORMAT REV G

CONFIDENTIAL: THIS DRAWING AND ITS INFORMATION ARE THE EXCLUSIVE AND CONFIDENTIAL PROPERTY OF REGAL-BELOIT CORPORATION AND ARE NOT TO BE DISCLOSED, DUPLICATED, DISTRIBUTED OR OTHERWISE USED WITHOUT THE WRITTEN CONSENT OF REGAL-BELOIT CORPORATION. -ALL RIGHTS RESERVED.

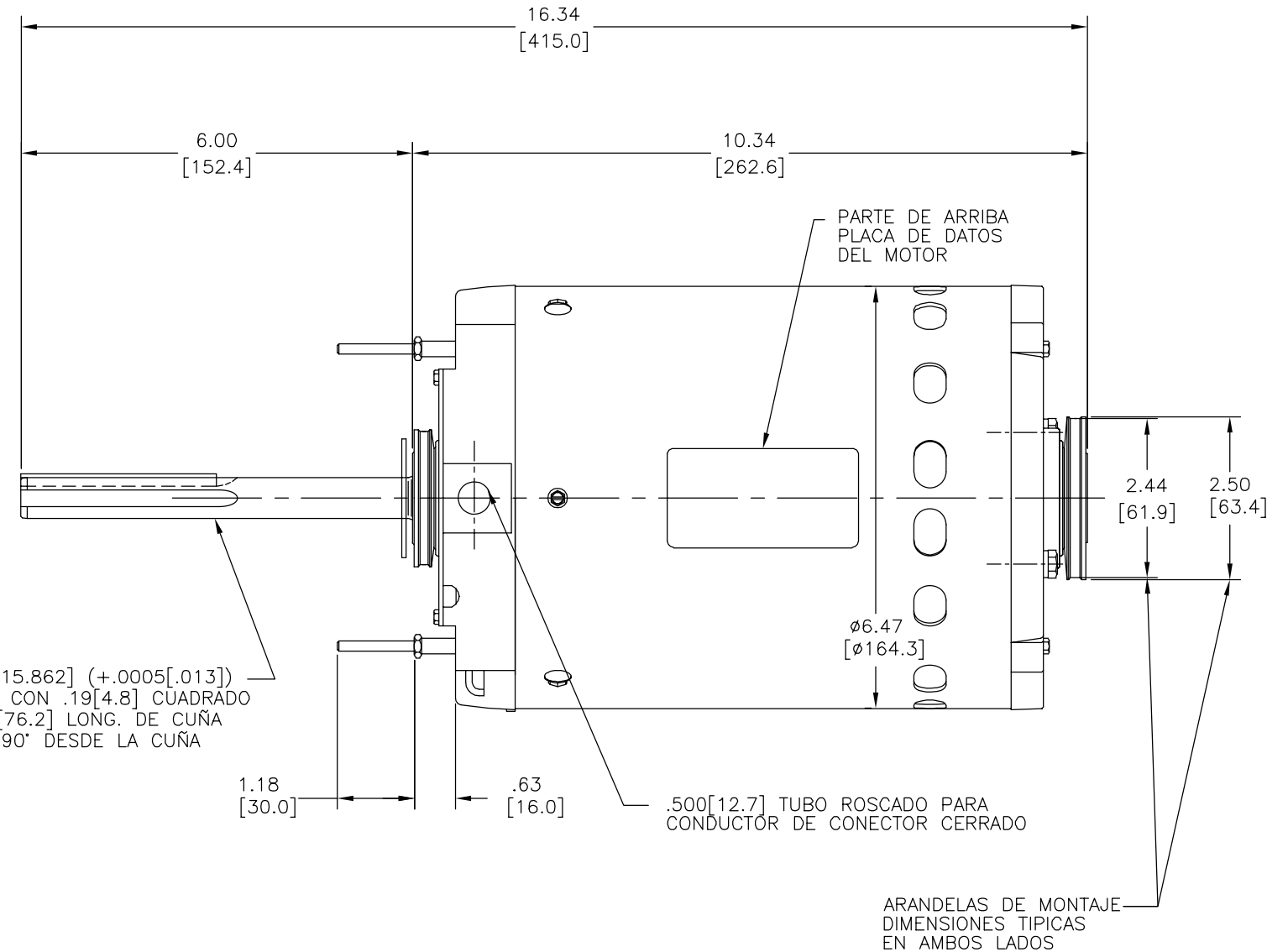
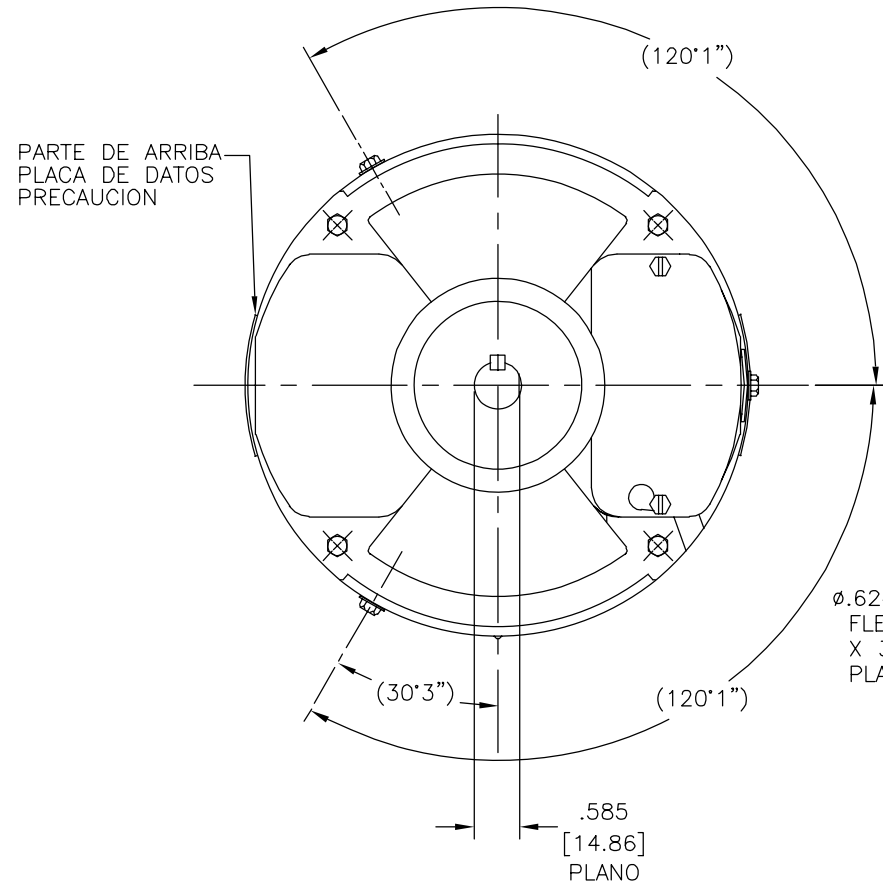
REGAL-BELOIT CORPORATION

DESCRIPTION: OUTLINE

SIZE C DWG NO 11700-003

SCALE NONE SHEET 1

REVISION:	ECO	REVISADO POR:	FECHA:	APROBADO POR:	FECHA:
C	0025377	H.ZHANG	04-16-2012	B.SHEN	04-16-2012



Ø.6245[Ø15.862] (+.0005[.013])
 FLECHA CON .19[4.8] CUADRADO
 X 3.00[76.2] LONG. DE CUÑA
 PLANO 90° DESDE LA CUÑA

CARACTERISTICAS DE GEOMETRIA Y SIMBOLOS

- ▭ PLANICIDAD
- RECTITUD
- ∠ ANGULARIDAD
- ⊥ PERPENDICULARIDAD (A ESCUADRA)
- // PARALELISMO
- REDONDEZ (CIRCULARIDAD)
- ⊘ CILINDRICIDAD
- △ PERFIL DE CUALQUIER SUPERFICIE
- ∧ PERFIL DE CUALQUIER LINEA
- ↑ VARIACION
- ⊕ POSICION REAL
- ◎ CONCENTRICIDAD
- = SIMETRIA

A MENOS QUE SE ESPECIFIQUE DE OTRA MANERA, LAS TOLERANCIAS DE LAS DIMS; SON LAS SIGUIENTES:

PULG ±.1 ±.02 ±.005 ±.0005
 mm ±0.5 ±0.13 ±0.013

ANG. ±50 GRADOS
 ELIMINAR REBABAS Y ORILLAS FILOSAS DEL BORDE.

PULG .003-.015 mm 0.1-0.4
 FILETEAR ESQUINA: PULG .020 mm 0.5
 MAQUINAR SUPERFICIES
 PULG 125 mm 3.2

DIMS METRICAS MOSTRADAS [PARENTESIS]

DIBUJADO POR: BLANKENSHIP	08-06-2004
APROBADO POR:	
TERCER ANGULO DE PROYECCION	FECHA EDS: 11-11-2011 REV. FORMATO: G
CONFIDENCIAL: ESTE DIBUJO Y SU INFORMACION SON PROPIEDAD DE USO EXCLUSIVO Y CONFIDENCIAL DE REGAL-BELOIT CORPORATION. Y NO DEBERAN SER REVELADOS, DUPLICADOS, DISTRIBUIDOS O USARSE DE OTRA MANERA SIN EL CONSENTIMIENTO ESCRITO DE REGAL-BELOIT CORPORATION. -TODOS LOS DERECHOS RESERVADOS.	

DESCRIPCION: OUTLINE	
TAMAÑO: C	NUMERO DE DIBUJO: 11700-003
ESCALA: NONE	HOJA: 1

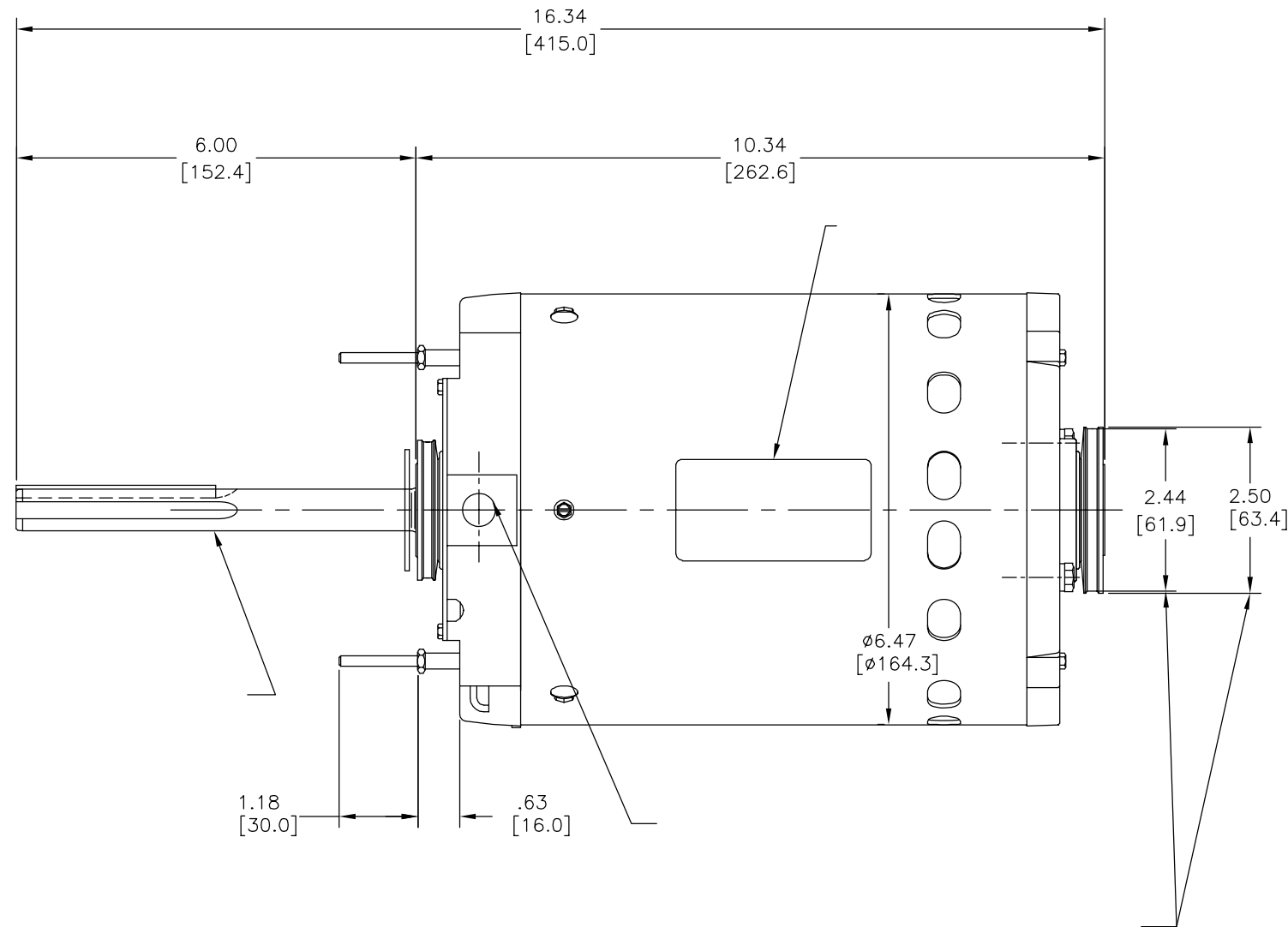
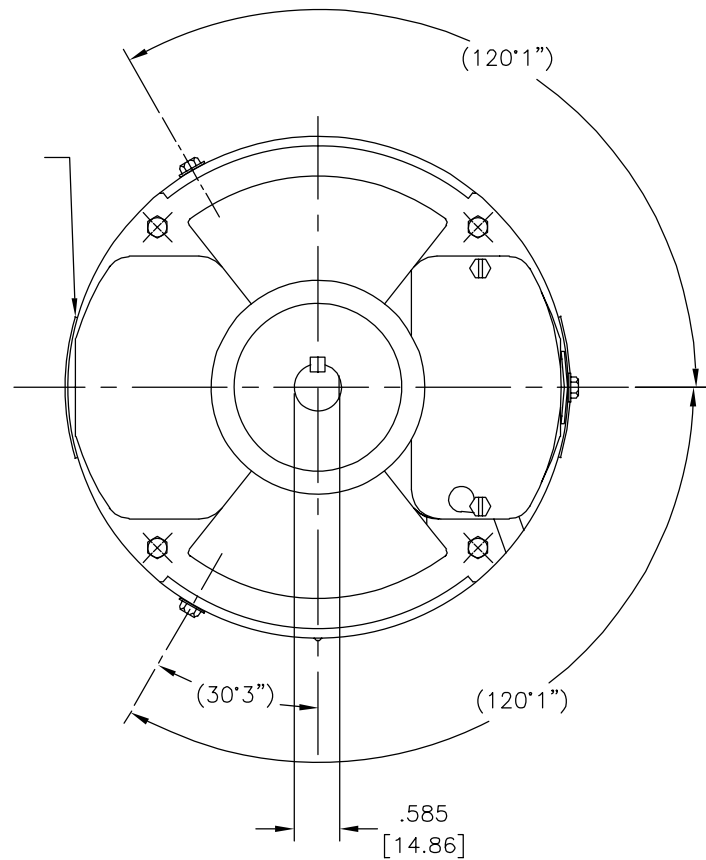
4

3

2

1

版本	ECO	编制	日期	批准	日期
C	0025377	H.ZHANG	04-16-2012	B.SHEN	04-16-2012



形位公差
□ 平面度
— 直线度
∠ 倾斜度
⊥ 垂直度
// 平行度
○ 圆度
⊘ 圆柱度
△ 面轮廓度
∩ 线轮廓度
↗ 圆跳动
⊕ 位置度
◎ 同轴度
≡ 对称度

除另有注明
尺寸公差如下:
英寸 X XX XXX XXXX
毫米 ±.1 ±.02 ±.005 ±.0005
毫米 ±0.5 ±0.13 ±0.013
角度 ±.50 度
清理毛刺和尖棱
英寸 .003-.015 毫米 0.1-0.4
内圆角
英寸 .020 毫米 0.5
表面粗糙度
英制 125 米制 3.2
米制尺寸显示在 []

绘图:	BLANKENSHIP	08-06-2004
批准:		
第三角投影		图纸格式发布日期 11-11-2011 图纸格式版本 G
机密: 本图纸及相关信息所有权归REGAL-BELOIT CORPORATION 未经REGAL-BELOIT CORPORATION书面授权, 不得泄露、 复制、传播或作其他用途。—版权所有		

名称	OUTLINE
图幅	C
图号	11700-003
比例	NONE
页号	1

ASME Y14.5M 1994

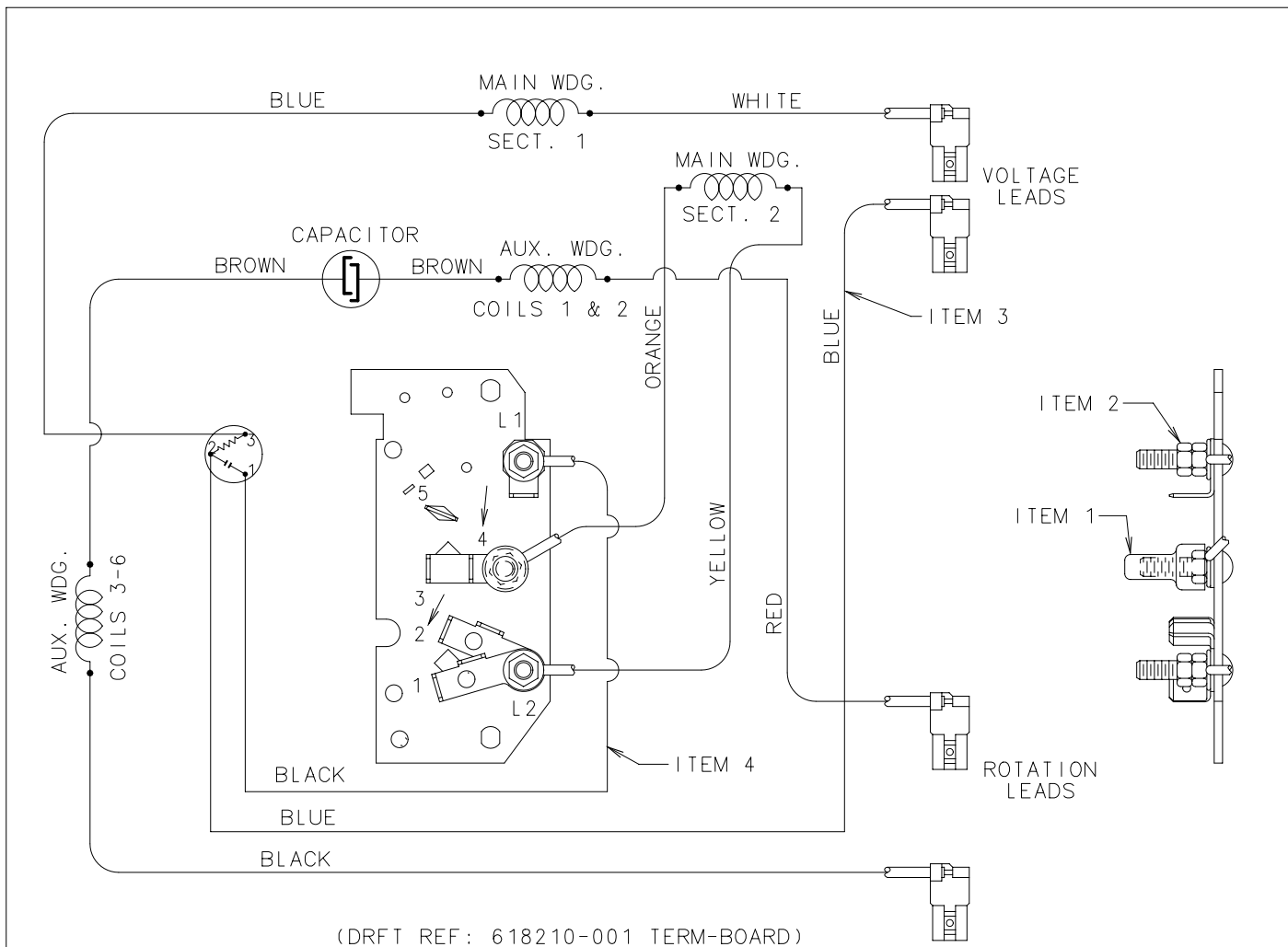
4

3

2

1

619566



(DRFT REF: 618210-001 TERM-BOARD)

P / N	ROT.	CONNECTION	VOLT	CONNECTION
-001	CCW	BLACK → 2	460	WHITE → 1
		RED → 4		BLUE → 3
-002	CW	RED → 2	460	WHITE → 1
		BLACK → 4		BLUE → 3
-003	CCW	BLACK → 2	230	WHITE → 1
		RED → 4		BLUE → 3
-004	CW	RED → 2	230	WHITE → 1
		BLACK → 4		BLUE → 3

DUAL VOLTAGE
REVERSIBLE
THERMAL PROTECTOR

NOTES:

- CONNECT REVERSING & VOLTAGE LEADS PER DASH CONDITION SPECIFIED IN B.O.M. FOR MODEL.
- CONNECT REVERSING LEADS TO TERMINALS MARKED BY AN ARROW.
- LEAD LOCATION SHOULD BE ESSENTIALLY AS SHOWN.

PARTS LIST

ITEM	REQ	DESCRIPTION	PART NUMBER
1	1	PROTECTOR	167A168H01
2	5	HEX NUT-#8	368C210H05
3	1	LEAD	058BL16-AH-070-U5
4	1	LEAD	058B16-KD-075-U5

DATE	CHANGED FROM	APPROVED ENG/DRF	NOTICE	DATE	CHANGED FROM	APPROVED ENG/DRF	NOTICE
				3/10/04	REDRAWN TO CAD	ED JAB	0441191

GEOMETRIC CHARACTERISTICS & SYMBOLS	UNLESS OTHERWISE SPECIFIED DIMENSION TOLERANCES ARE AS FOLLOWS	MATERIAL	DRAWN	J. BLANKENSHIP	3/10/04
□ FLATNESS — STRAIGHTNESS ∠ ANGULARITY ⊥ PERPENDICULARITY (SQUARENESS) ∥ PARALLELISM ○ ROUNDNESS (CIRCULARITY) ⊘ CYLINDRICITY ○ PROFILE OF ANY SURFACE ⌒ PROFILE OF ANY LINE ↗ RUNOUT ⊕ TRUE POSITION ◎ CONCENTRICITY = SYMMETRY	.INCHES .XX .XXX METRIC ±.5 ±.13 ANGLES ±.50 DEG REMOVE BURRS AND BREAK SHARP EDGES .003-.015 CORNER FILLETS TO .020 MACHINE SURFACES 125 ✓	-	APPROVED	-	
		PROCESS	REFERENCE		
		SEE NOTES			
		CONFIDENTIAL: THIS DRAWING AND ITS INFORMATION ARE THE EXCLUSIVE AND CONFIDENTIAL PROPERTY OF A.O.SMITH CORP. AND ARE NOT TO BE DISCLOSED, DUPLICATED, DISTRIBUTED OR OTHERWISE USED WITHOUT THE WRITTEN CONSENT OF A.O.SMITH CORP. - ALL RIGHTS RESERVED	APPLICATION	-	
			USER/FILE	LEFR56 / CONEXT	

DESCRIPTION		SIZE	PART NUMBER
EXTERNAL PARTS & CONNECTIONS		B	619566

SCALE	NOTICE	SHEET
-	-	1