

# PRODUCT INFORMATION PACKET



Model No: H062L

Catalog No: H062L

General Purpose Motor, 0.50 HP, 3 Ph, 60 Hz, 200-230/460 V, 1800 RPM, Y56C Frame, TEFC



Regal and Century are trademarks of Regal Rexnord Corporation or one of its affiliated companies.

©2022 Regal Rexnord Corporation, All Rights Reserved. MC017097E





**Nameplate Specifications**

Output HP	<b>0.50 Hp</b>	Output KW	<b>0.37 kW</b>
Frequency	<b>60 Hz</b>	Voltage	<b>200-230/460 V</b>
Current	<b>1.6-1.8/.9 A</b>	Speed	<b>1725/1425 rpm</b>
Service Factor	<b>1.15</b>	Phase	<b>3</b>
Duty	<b>Continuous</b>	Insulation Class	<b>B</b>
Frame	<b>Y56C</b>	Enclosure	<b>Totally Enclosed Fan Cooled</b>
Thermal Protection	<b>No Protection</b>	Ambient Temperature	<b>40 °C</b>
UL	<b>Recognized</b>	CSA	<b>Y</b>
CE	<b>N</b>	Number of Speeds	<b>2</b>

**Technical Specifications**

Electrical Type	<b>Polyphase, Induction Type, Single Or Dual Voltage</b>	Starting Method	<b>Across The Line</b>
Poles	<b>4</b>	Rotation	<b>Reversible Counterclockwise</b>
Mounting	<b>C</b>	Drive End Bearing	<b>Ball</b>
Opp Drive End Bearing	<b>Ball</b>	Frame Material	<b>Rolled Steel</b>
Shaft Type	<b>Keyed</b>	Overall Length	<b>11.59 in</b>
Frame Length	<b>5.38 in</b>	Shaft Diameter	<b>0.625 in</b>
Shaft Extension	<b>2.07 in</b>		
Outline Drawing	<b>H062L-S01</b>	Connection Drawing	<b>183040-24</b>

This is an uncontrolled document once printed or downloaded and is subject to change without notice. Date Created:12/27/2022

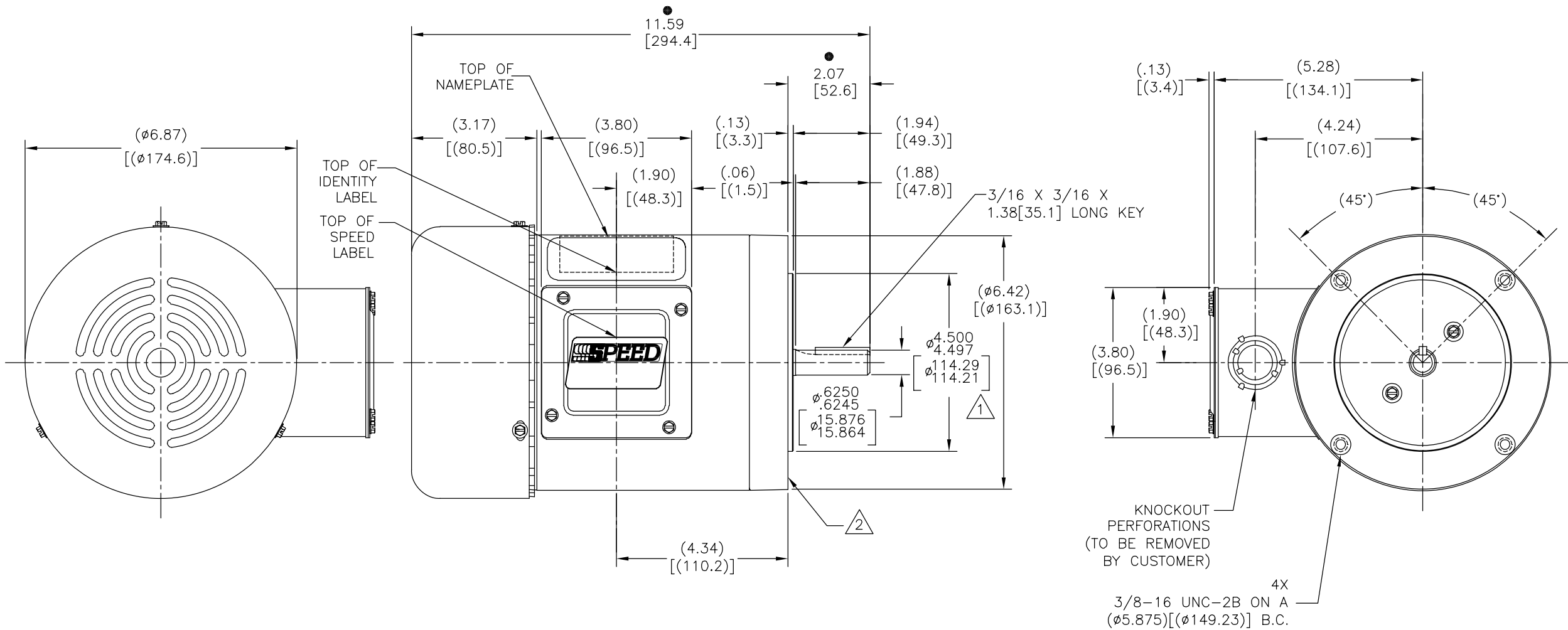
REV	ECO	REV BY	DATE	APPD	DATE
B	0025377	H.ZHANG	04-16-2012	B.SHEN	04-16-2012

NOTES:

1. PILOT DIAMETER IS CONCENTRIC WITH SHAFT CENTERLINE WITHIN .004[.10] T.I.R.
2. FACE OF MOUNTING FLANGE IS PERPENDICULAR TO SHAFT CENTERLINE WITHIN .004[.10] T.I.R.
3. SHAFT RUNOUT NOT TO EXCEED .002[.05] T.I.R.
4. END PLAY NOT TO EXCEED .010[.25] MEASURED WITH NO THRUST

ALL DIMENSIONS SHOWN IN PARENTHESIS ARE REFERENCE DIMENSIONS. ALL OTHER DIMENSIONS ARE TOLERANCED PER THE FOLLOWING CHART UNLESS OTHERWISE SPECIFIED.

"C" DIM.	= +/-	.055[1.40]
SHAFT EXT.	= +/-	.034[.86]
LEAD LENGTHS	= +/-	1.00[25.4]
EXTENDED THRU-BOLTS	= +/-	.050[1.27]
ANGULAR DIMS.	= +/-	2°



● = CRITICAL DIMENSION

GEOMETRIC CHARACTERISTICS & SYMBOLS	
▭	FLATNESS
—	STRAIGHTNESS
∠	ANGULARITY
⊥	PERPENDICULARITY (SQUARENESS)
//	PARALLELISM
○	ROUNDNESS (CIRCULARITY)
⊘	CYLINDRICITY
△	PROFILE OF ANY SURFACE
∧	PROFILE OF ANY LINE
↗	RUNOUT
⊕	TRUE POSITION
◎	CONCENTRICITY
≡	SYMMETRY

UNLESS OTHERWISE SPECIFIED DIM. TOLERANCES ARE AS FOLLOWS:	
INCH	±.1 ±.02 ±.005 ±.0005
mm	±0.5 ±0.13 ±0.013
ANG. ±.50 DEG	
REMOVE BURRS & BREAK SHARP EDGES:	
INCH	.003-.015
mm	0.1-0.4
CORNER FILLETS TO:	
INCH	.020
mm	0.5
MACHINE SURFACES:	
INCH	125
mm	3.2
METRIC DIMS. SHOWN IN [BRACKETS]	

DR BY:	OZ	03-31-2010
APPD:		
THIRD ANGLE PROJECTION	EDS DATE	11-11-2011
	FORMAT	REV G
CONFIDENTIAL: THIS DRAWING AND ITS INFORMATION ARE THE EXCLUSIVE AND CONFIDENTIAL PROPERTY OF REGAL-BELOIT CORPORATION AND ARE NOT TO BE DISCLOSED, DUPLICATED, DISTRIBUTED OR OTHERWISE USED WITHOUT THE WRITTEN CONSENT OF REGAL-BELOIT CORPORATION. -ALL RIGHTS RESERVED.		

DESCRIPTION	
OUTLINE	
SIZE	DWG NO
C	H062L
SCALE	SHEET
NONE	1

GRUPO TIPO CARCAZA

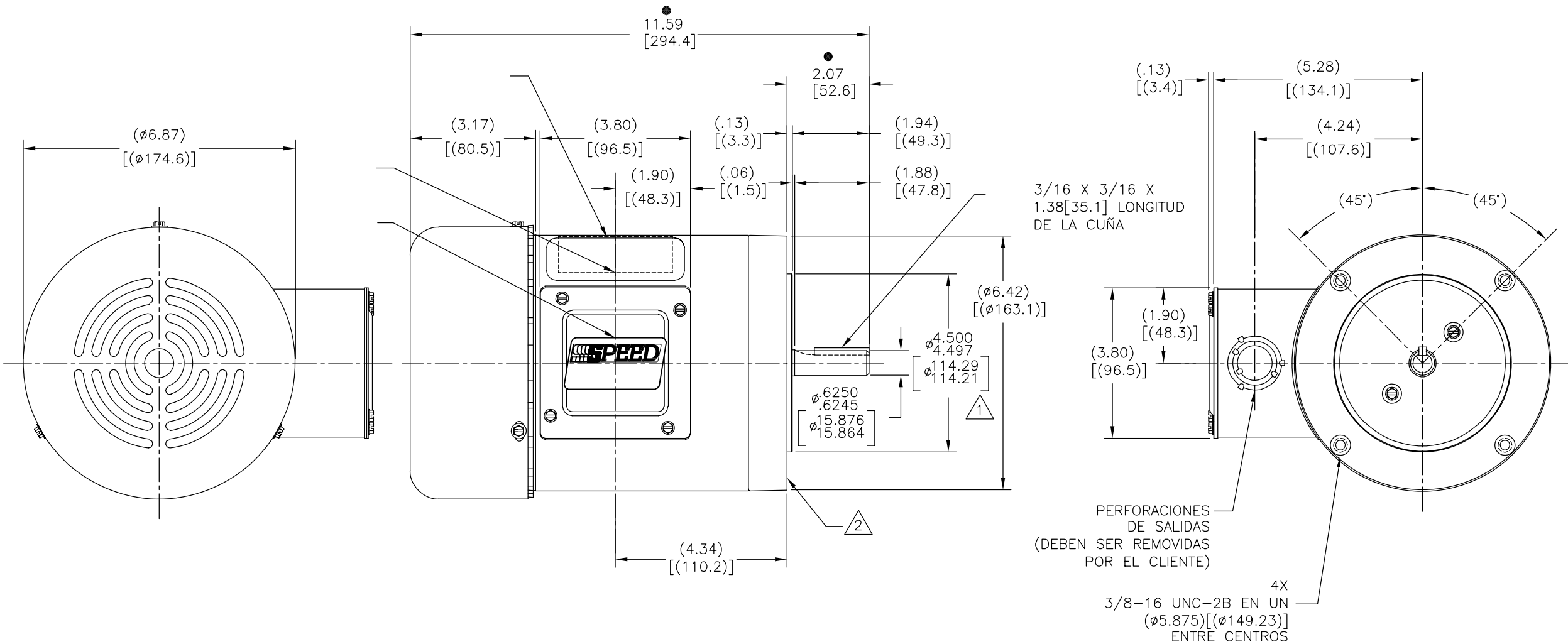
REVISION:	ECO	REVISADO POR:	FECHA:	APROBADO POR:	FECHA:
B	0025377	H.ZHANG	04-16-2012	B.SHEN	04-16-2012

NOTAS:

- DIAMETRO PILOTO ES CONCENTRICO CON LA LINEA DE CENTRO DE LA FLECHA DENTRO DE .004[.10] L.T.I.
- CARA DEL REBORDE DE MONTAJE ES PERPENDICULAR A LA LINEA DE CENTRO DE LA FLECHA DENTRO DE .004[.10] L.T.I.
- LA OSCILACION DE LA FLECHA NO DEBE EXCEDER DE .002[.05] L.T.I.
- JUEGO AXIAL NO DEBE EXCEDER DE .010 [.25] MEDIDO SIN EMPUJE

TODAS LAS DIMENSIONES MOSTRADAS ENTRE PARENTESIS SON DIMENSIONES DE REFERENCIA. TODAS LAS DEMAS DIMENSIONES TIENEN TOLERANCIA DE ACUERDO A LA SIGUIENTE TABLA A MENOS QUE SE ESPECIFIQUE LO CONTRARIO.

"C" DIM.	= +/-	.055[1.40]
EXTENSION DE FLECHA	= +/-	.034[.86]
LONGITUD DE CABLES	= +/-	1.00[25.4]
EXTENSION DE PERNO PASADO	= +/-	.050[1.27]
DIMENSION ANGULAR	= +/-	2°



● = DIMENSION CRITICA

CARACTERISTICAS DE GEOMETRIA Y SIMBOLOS

- PLANICIDAD
- RECTITUD
- ∠ ANGULARIDAD
- ⊥ PERPENDICULARIDAD (A ESCUADRA)
- // PARALELISMO
- REDONDEZ (CIRCULARIDAD)
- ⊘ CILINDRICIDAD
- △ PERFIL DE CUALQUIER SUPERFICIE
- ∧ PERFIL DE CUALQUIER LINEA
- ↑ VARIACION
- ⊕ POSICION REAL
- ◎ CONCENTRICIDAD
- = SIMETRIA

ASME Y14.5M 1994

A MENOS QUE SE ESPECIFIQUE DE OTRA MANERA, LAS TOLERANCIAS DE LAS DIMS; SON LAS SIGUIENTES:

	XX	XXX	XXXX
PULG	±.1	±.02	±.005 ±.0005
mm	±0.5	±0.13	±0.013
ANG.	± 50	GRADOS	

ELIMINAR REBABAS Y ORILLAS FILOSAS DEL BORDE.

PULG	.003-.015	mm	0.1-0.4
------	-----------	----	---------

FILETEAR ESQUINA: PULG .020 mm 0.5

MAQUINAR SUPERFICIES

PULG	125	mm	.32
------	-----	----	-----

DIMS METRICAS MOSTRADAS [PARENTESIS]

DIBUJADO POR:	OZ	03-31-2010
APROBADO POR:		
TERCER ANGULO DE PROYECCION	⊕	FECHA EDS: 11-11-2011 REV. FORMATO: G
CONFIDENCIAL: ESTE DIBUJO Y SU INFORMACION SON PROPIEDAD DE USO EXCLUSIVO Y CONFIDENCIAL DE REGAL-BELOIT CORPORATION. Y NO DEBERAN SER REVELADOS, DUPLICADOS, DISTRIBUIDOS O USARSE DE OTRA MANERA SIN EL CONSENTIMIENTO ESCRITO DE REGAL-BELOIT CORPORATION. -TODOS LOS DERECHOS RESERVADOS.		

DESCRIPCION: <b>OUTLINE</b>	
TAMAÑO: C	NUMERO DE DIBUJO: H062L
ESCALA: NONE	HOJA: 1

4

3

2

1

版本	ECO	编制	日期	批准	日期
B	0025377	H.ZHANG	04-16-2012	B.SHEN	04-16-2012

D

D

C

C

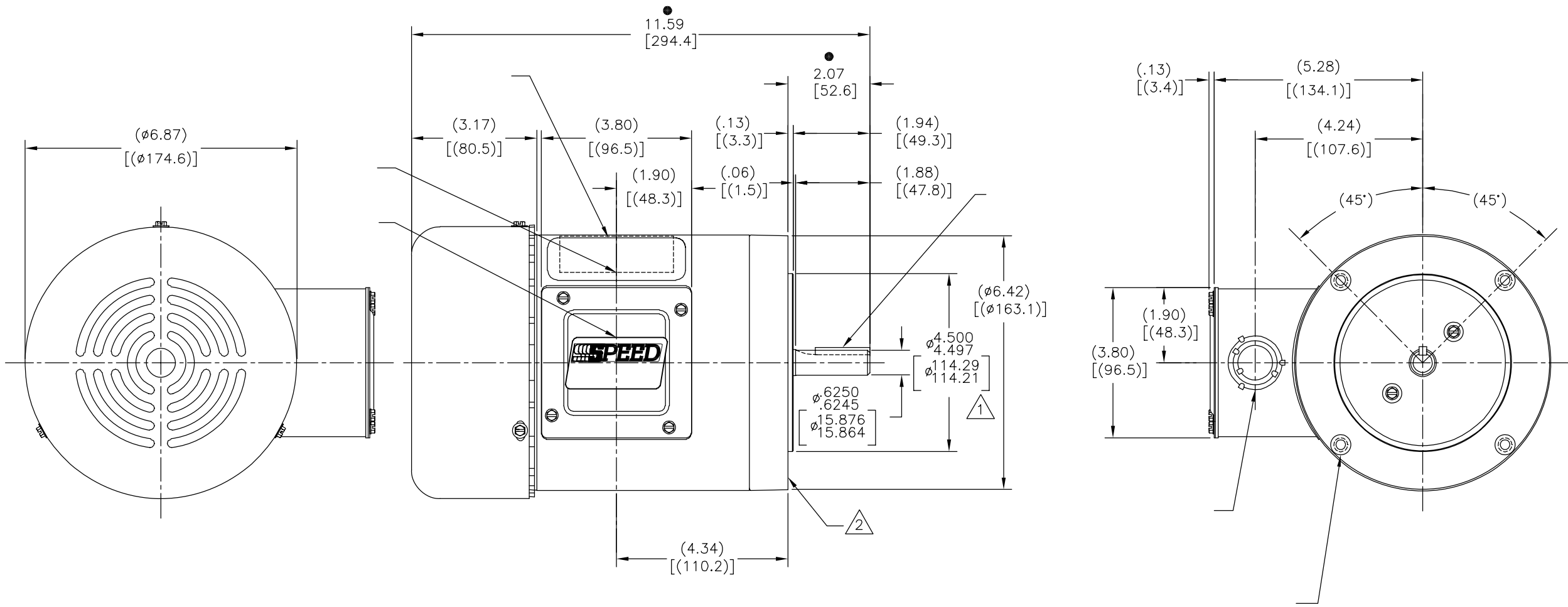
B

B

A

A

- = +/- .055[1.40]
- = +/- .034[.86]
- = +/- 1.00[25.4]
- = +/- .050[1.27]
- = +/- 2°



形位公差 □ 平面度 — 直线度 ∠ 倾斜度 ⊥ 垂直度 ∥ 平行度 ○ 圆度 ⊙ 圆柱度 △ 面轮廓度 ⌒ 线轮廓度 ↗ 圆跳动 ⊕ 位置度 ⊗ 同轴度 ≡ 对称度	除另有注明 尺寸公差如下: 英寸 X XX XXX XXXX 毫米 ±.1 ±.02 ±.005 ±.0005 角度 ±.50 度 清理毛刺和尖棱 英寸 .003-.015 毫米 0.1-0.4 内圆角 英寸 .020 毫米 0.5 表面粗糙度 英制 125 米制 3.2
--	--

ASME Y14.5M 1994

米制尺寸显示在 [ ]
-------------

绘图: OZ	03-31-2010
批准:	
第三角投影	
机密: 本图纸及相关信息所有权归REGAL-BELOIT CORPORATION 未经REGAL-BELOIT CORPORATION书面授权, 不得泄露、 复制、传播或作其他用途。—版权所有	

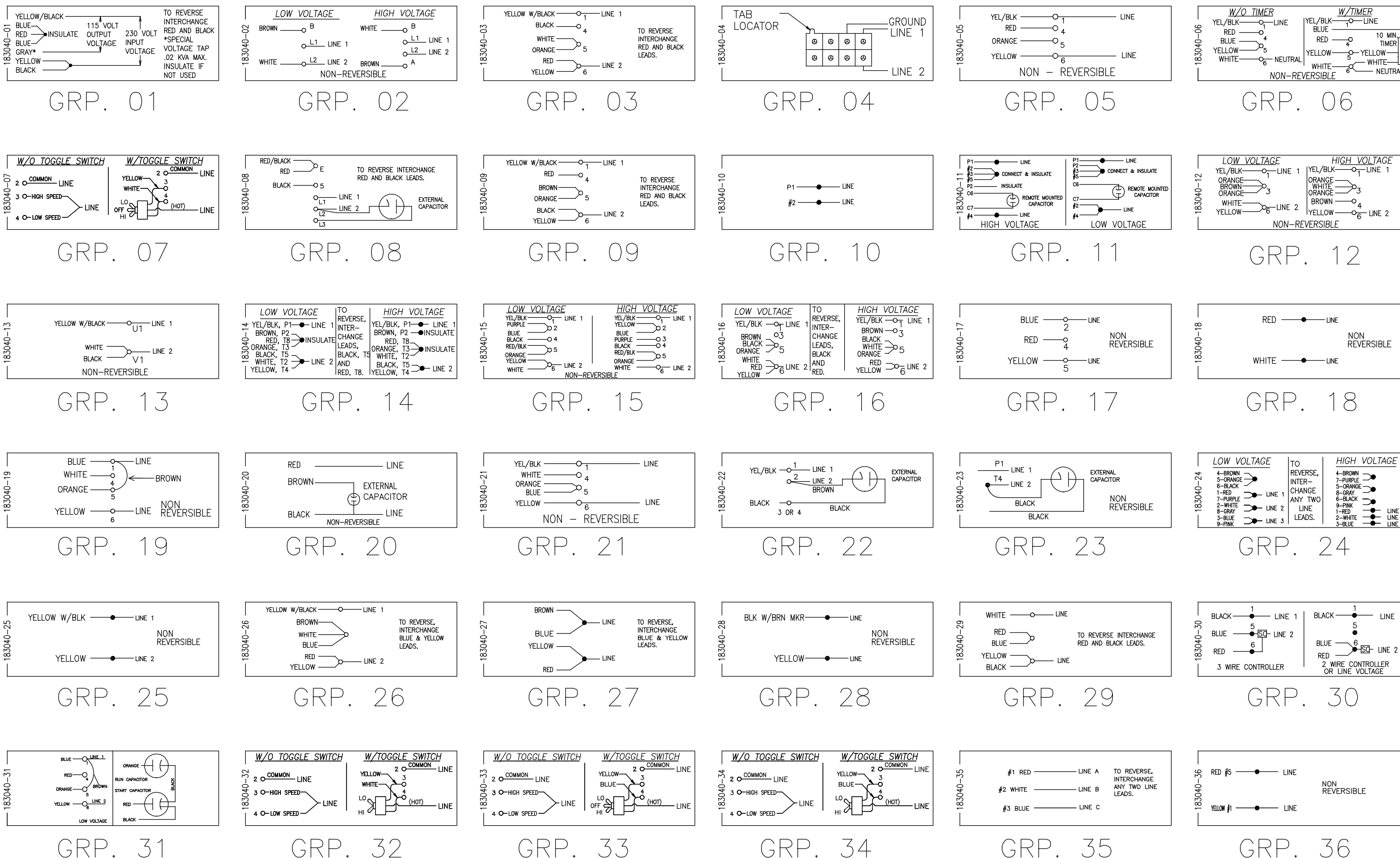
名称: OUTLINE	
图幅: C	图号: H062L
比例: NONE	页号: 1

4

3

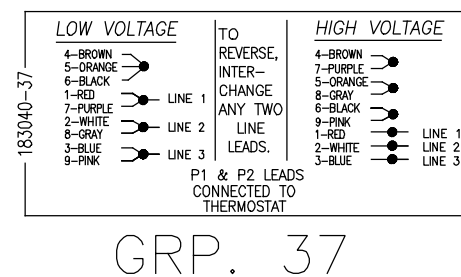
2

1



NOTES:

1. DOTTED BOX REPRESENTS TOTAL PRINTED AREA ALLOWED FOR CORRECTION DIAGRAM TO FIT IN (2.13 X .75). SEE NAMEPLATE DRAWING 178900 AND 178901 FOR LOCATION.
2. CHARACTERS ARE TO BE A MINIMUM OF .03 TO .06 MAXIMUM IN HEIGHT.
3. DETAILS ARE NOT TO BE COPIED FROM DRAWING, BUT ARE TO BE REPRODUCED FROM ORIGINAL ARTWORK FURNISHED.



DRAWING REVISION H	REVISION BY SHESHI	DATE 07/17/19	TOLERANCES UNLESS OTHERWISE SPECIFIED DEC. INCH mm ANGLE .XX ±0.1 [±2.5] ±0.5° .XX ±0.02 [±0.51] .XXX ±0.005 [±0.127] .XXXX ±0.0005 [±0.0127]	DRAWN BY: PLM	Regal Beloit America, Inc.
ECO-0170761	APPROVED BY SM	DATE 07/17/19	REMOVE BURRS & BREAK SHARP EDGES .003/.015 [0.076/.381] CORNER FILLETS .02 [.51] MACHINED SURFACES 125/INCH 3.2/mm SHOWN IN [BRACKETS]	DATE: 04/13/92	
ECO DESCRIPTION ADDED GROUP 37				APPROVED BY:	DESCRIPTION NAMEPLATE DIAGRAM
				DATE:	
				REFERENCE:	MATERIAL
				THIRD ANGLE PROJECTION	PROCESS/FINISH
				SIZE DWG NO C 183040	SHEET 1