

# PRODUCT INFORMATION PACKET



Model No: H064L

Catalog No: H064L

General Purpose Motor, 1.0 HP, 3 Ph, 60 Hz, 200-230/460 V, 1800 RPM, K143TC Frame, TEFC



Regal and Century are trademarks of Regal Rexnord Corporation or one of its affiliated companies.

©2022 Regal Rexnord Corporation, All Rights Reserved. MC017097E





**Nameplate Specifications**

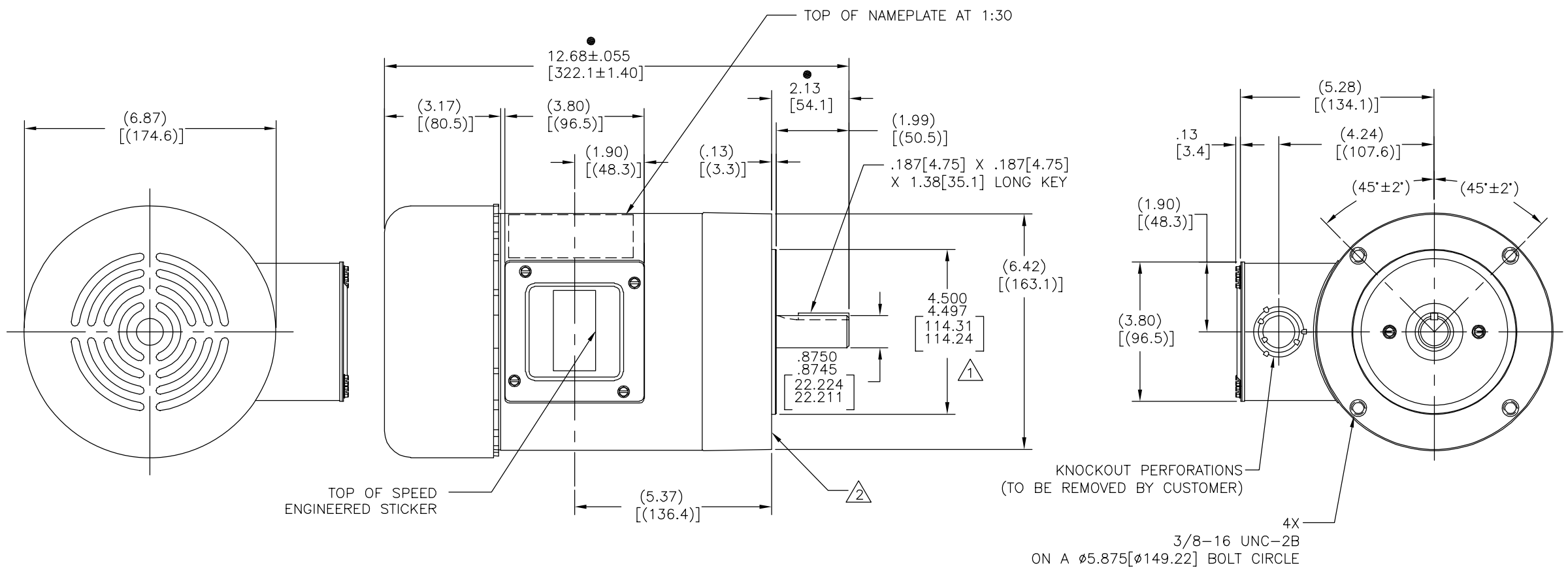
Output HP	1.0 Hp	Output KW	0.75 kW
Frequency	60 Hz	Voltage	200-230/460 V
Current	3.3-3.2/1.6 A	Speed	1725/1425 rpm
Service Factor	1.15	Phase	3
Duty	Continuous	Insulation Class	B
Frame	K143TC	Enclosure	Totally Enclosed Fan Cooled
Thermal Protection	No Protection	Ambient Temperature	40 °C
UL	Recognized	CSA	Y
CE	N	Number of Speeds	1

**Technical Specifications**

Electrical Type	Polyphase, Induction Type, Single Or Dual Voltage	Starting Method	Across The Line
Poles	4	Rotation	Reversible Counterclockwise
Mounting	Round	Drive End Bearing	Ball
Opp Drive End Bearing	Ball	Frame Material	Rolled Steel
Shaft Type	Keyed	Overall Length	12.68 in
Frame Length	5.50 in	Shaft Diameter	0.625 in
Shaft Extension	2.13 in		
Connection Drawing	18304024.PCX	Outline Drawing	H064L-S01

This is an uncontrolled document once printed or downloaded and is subject to change without notice. Date Created:11/29/2022

REV	ECO	REV BY	DATE	APPD	DATE
B	0025408	F.NAVARRO	04-16-2012	R.RASCON	04-16-2012



- NOTES:
- ▲ PILOT DIAMETER IS CONCENTRIC WITH SHAFT CENTERLINE WITHIN .004[.10] T.I.R.
  - ▲ FACE OF MOUNTING FLANGE IS PERPENDICULAR TO SHAFT CENTERLINE WITHIN .004[.10] T.I.R.
  - 3. SHAFT RUNOUT NOT TO EXCEED .002[.05] T.I.R.
  - 4. END PLAY NOT TO EXCEED .010[.25] MEASURED WITH NO THRUST

ALL DIMENSIONS SHOWN IN PARENTHESIS ARE REFERENCE DIMENSIONS. ALL OTHER DIMENSIONS ARE TOLERANCED PER THE FOLLOWING CHART UNLESS OTHERWISE SPECIFIED.

OVER ALL DIMENSION	= ± .055[1.39]
SHAFT EXTENSION	= ± .034[.86]
LEAD LENGTHS	= +/- 1.00[25.4]
EXTENDED THRU-BOLTS	= +/- .050[1.27]
ANGULAR DIMENSION	= +/- 2'

● = CRITICAL DIMENSION

GEOMETRIC CHARACTERISTICS & SYMBOLS

- ▭ FLATNESS
- STRAIGHTNESS
- ∠ ANGULARITY
- ⊥ PERPENDICULARITY (SQUARENESS)
- // PARALLELISM
- ROUNDNESS (CIRCULARITY)
- ⊘ CYLINDRICITY
- ⌒ PROFILE OF ANY SURFACE
- ⌒ PROFILE OF ANY LINE
- ↗ RUNOUT
- ⊕ TRUE POSITION
- ⊙ CONCENTRICITY
- ≡ SYMMETRY

ASME Y14.5M 1994

UNLESS OTHERWISE SPECIFIED DIM. TOLERANCES ARE AS FOLLOWS:

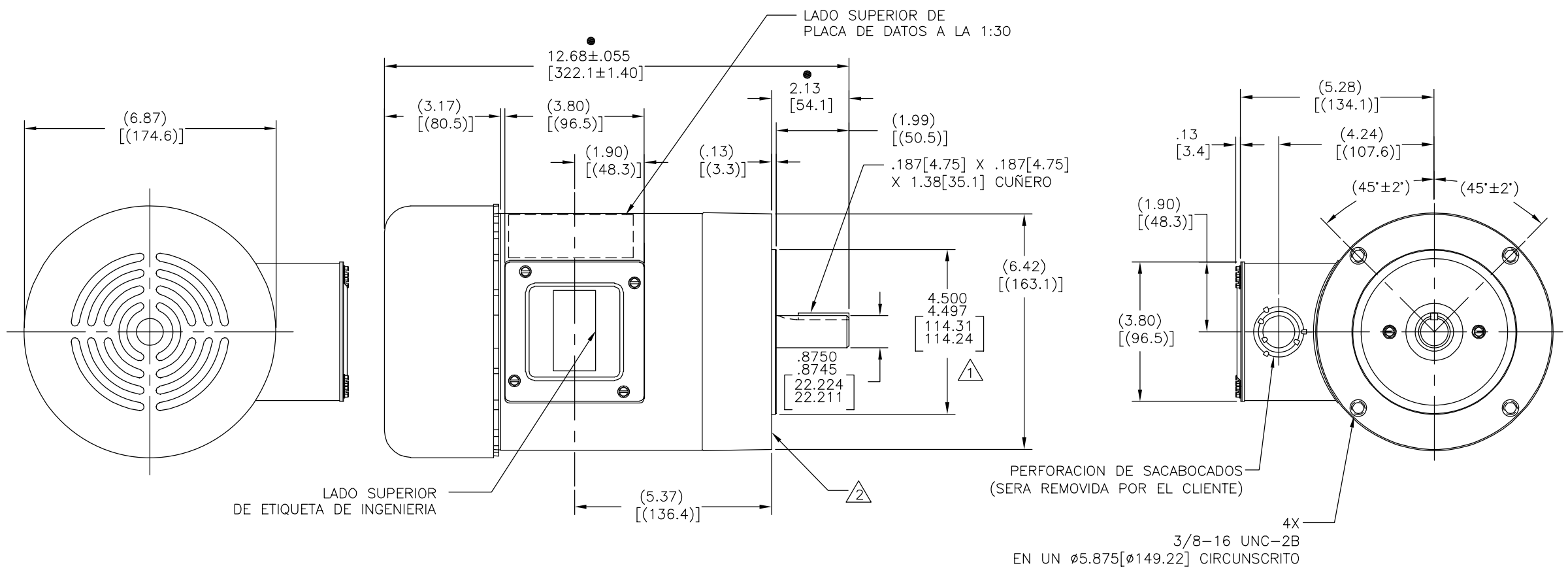
INCH	±.1	±.02	±.005	±.0005
mm	±0.5	±0.13	±0.013	

ANG. ±.50 DEG  
REMOVE BURRS & BREAK SHARP EDGES:  
INCH .003-.015 mm 0.1-0.4  
CORNER FILLETS TO:  
INCH .020 mm 0.5  
MACHINE SURFACES:  
INCH 125 mm 3.2  
METRIC DIMS. SHOWN IN [BRACKETS]

DR BY:	IVAN LOPEZ	12-03-2010
APPD:	J.ORTEGA	12-03-2010
THIRD ANGLE PROJECTION		EDS DATE 11-11-2011 FORMAT REV G
CONFIDENTIAL: THIS DRAWING AND ITS INFORMATION ARE THE EXCLUSIVE AND CONFIDENTIAL PROPERTY OF REGAL-BELOIT CORPORATION AND ARE NOT TO BE DISCLOSED, DUPLICATED, DISTRIBUTED OR OTHERWISE USED WITHOUT THE WRITTEN CONSENT OF REGAL-BELOIT CORPORATION. -ALL RIGHTS RESERVED.		

DESCRIPTION <b>OUTLINE</b>	
SIZE C	DWG NO H064L
SCALE NONE	SHEET 1

REVISION:	ECO	REVISADO POR:	FECHA:	APROBADO POR:	FECHA:
B	0025408	F.NAVARRO	04-16-2012	R.RASCON	04-16-2012



- NOTAS:
- △ DIAMETRO PILOTO ES CONCENTRICO CON LA LINEA DE CENTRO DE LA FLECHA DENTRO DE .004[.10] L.T.I.
  - △ CARA DEL REBORDE DE MONTAJE ES PERPENDICULAR A LA LINEA DE CENTRO DE LA FLECHA DENTRO DE .004[.10] L.T.I.
  - 3. LA OSCILACION DE LA FLECHA NO DEBE EXCEDER DE .002[.05] L.T.I.
  - 4. JUEGO AXIAL NO DEBE EXCEDER DE .010[.25] MEDIDO SIN EMPUJE.

TODAS LAS DIMENSIONES MOSTRADAS EN PARENTESIS SON SOLO DE REFERENCIA. LAS OTRAS DIMENSIONES TIENEN TOLERANCIA DE ACUERDO A LA SIGUIENTE TABLA A MENOS QUE SEA ESPECIFICADO DE OTRA MANERA

TODAS LAS DIMENSIONES = ± .055[1.39]

EXTENSION DE FLECHA	= ± .034[.86]
LONGITUD DE CABLE	= +/− 1.00[25.4]
TORNILLO PASADO EXT.	= +/− .050[1.27]
DIMENSIONES ANGULARES	= +/− 2°

● = DIMENSION CRITICA

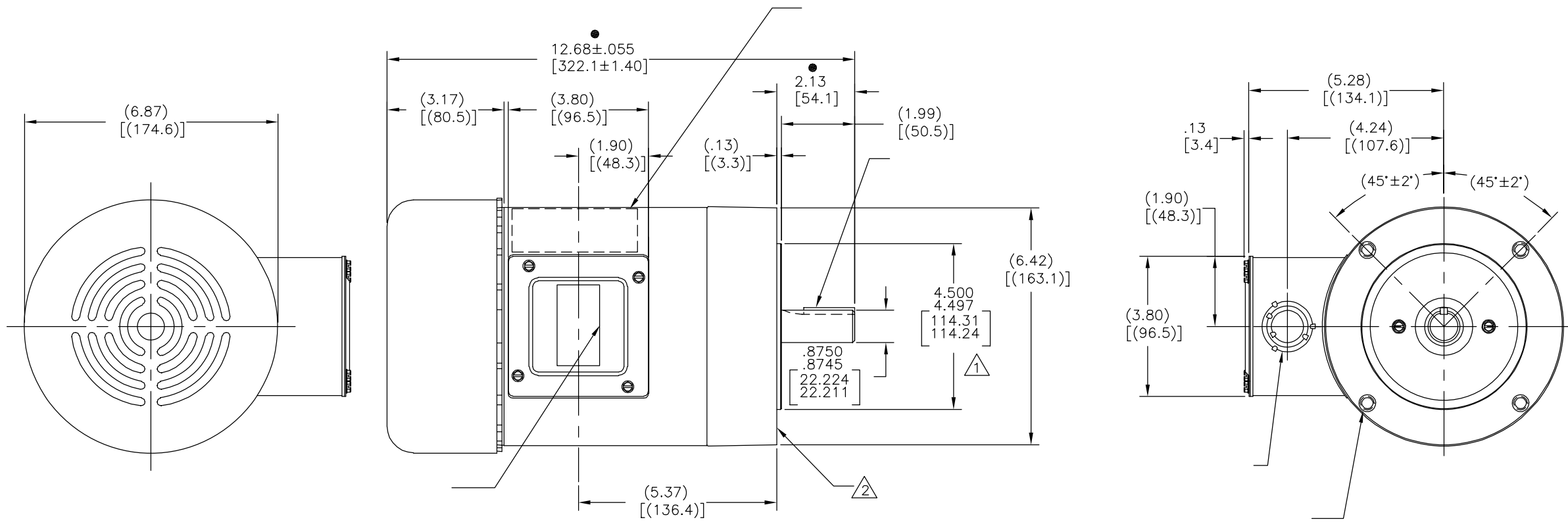
CARACTERISTICAS DE GEOMETRIA Y SIMBOLOS	
▭	PLANICIDAD
—	RECTITUD
∠	ANGULARIDAD
⊥	PERPENDICULARIDAD (A ESCUADRA)
//	PARALELISMO
○	REDONDEZ (CIRCULARIDAD)
⊘	CILINDRICIDAD
△	PERFIL DE CUALQUIER SUPERFICIE
∩	PERFIL DE CUALQUIER LINEA
∧	VARIACION
+	POSICION REAL
⊙	CONCENTRICIDAD
≡	SIMETRIA

A MENOS QUE SE ESPECIFIQUE DE OTRA MANERA, LAS TOLERANCIAS DE LAS DIMS; SON LAS SIGUIENTES:	
PULG	±.1 ±.02 ±.005 ±.0005
mm	±0.5 ±0.13 ±0.013
ANG.	±.50 GRADOS
ELIMINAR REBABAS Y ORILLAS FILOSAS DEL BORDE.	
PULG	.003-.015 mm 0.1-0.4
FILETEAR ESQUINA:	PULG .020 mm 0.5
MAQUINAR SUPERFICIES	PULG 125 mm 3.2
DIMS METRICAS MOSTRADAS [PARENTESIS]	

DIBUJADO POR:	IVAN LOPEZ	12-03-2010
APROBADO POR:	J.ORTEGA	12-03-2010
TERCER ANGULO DE PROYECCION	⊕	FECHA EDS: 11-11-2011
CONFIDENCIAL: ESTE DIBUJO Y SU INFORMACION SON PROPIEDAD DE USO EXCLUSIVO Y CONFIDENCIAL DE REGAL-BELOIT CORPORATION. Y NO DEBERAN SER REVELADOS, DUPLICADOS, DISTRIBUIDOS O USARSE DE OTRA MANERA SIN EL CONSENTIMIENTO ESCRITO DE REGAL-BELOIT CORPORATION. -TODOS LOS DERECHOS RESERVADOS.		REV. FORMATO: G

DESCRIPCION: OUTLINE	
TAMAÑO: C	NUMERO DE DIBUJO: H064L
ESCALA: NONE	HOJA: 1

版本	ECO	编制	日期	批准	日期
B	0025408	F.NAVARRO	04-16-2012	R.RASCON	04-16-2012



- 形位公差
- 平面度
- 直线度
- ∠ 倾斜度
- ⊥ 垂直度
- ∥ 平行度
- 圆度
- ⊘ 圆柱度
- 面轮廓度
- 线轮廓度
- 圆跳动
- ⊕ 位置度
- ⊙ 同轴度
- ≡ 对称度

ASME Y14.5M 1994

除另有注明  
尺寸公差如下:  
英寸 X XX XXX XXXX  
毫米 ±.1 ±.02 ±.005 ±.0005  
毫米 ±0.5 ±0.13 ±0.013  
角度 ±.50 度  
清理毛刺和尖棱  
英寸 .003-.015 毫米 0.1-0.4  
内圆角  
英寸 .020 毫米 0.5  
表面粗糙度  
英制 125 米制 3.2  
米制尺寸显示在 [ ]

绘图:	IVAN LOPEZ	12-03-2010
批准:	J.ORTEGA	12-03-2010
第三角投影		图纸格式发布日期 11-11-2011 图纸格式版本 G
机密: 本图纸及相关信息所有权归REGAL-BELOIT CORPORATION。未经REGAL-BELOIT CORPORATION书面授权, 不得泄露、复制、传播或作其他用途。--版权所有		



名称	OUTLINE	
图幅	C	图号 H064L
比例	NONE	页号 1