

PRODUCT INFORMATION PACKET



Model No: H192

Catalog No: H192

1/2 HP General Purpose Pump Motor, 3 phase, 3600 RPM, 200-230/460 V, 56C Frame, TENV

General Purpose Pump Motors



Regal and Century are trademarks of Regal Rexnord Corporation or one of its affiliated companies.
©2021 Regal Rexnord Corporation, All Rights Reserved. MC017097E





Nameplate Specifications

Output HP	1/2 Hp	Output KW	0.37 kW
Frequency	60 Hz	Voltage	200-230/460 V
Current	1.9-1.8/0.9 A	Speed	3450 rpm
Service Factor	1.15	Phase	3
Duty	Continuous	Insulation Class	B
Frame	Y56C	Enclosure	Totally Enclosed Non Ventilated
Thermal Protection	None	Ambient Temperature	40 °C
UL	Recognized	CSA	Y
CE	N	Number of Speeds	1

Technical Specifications

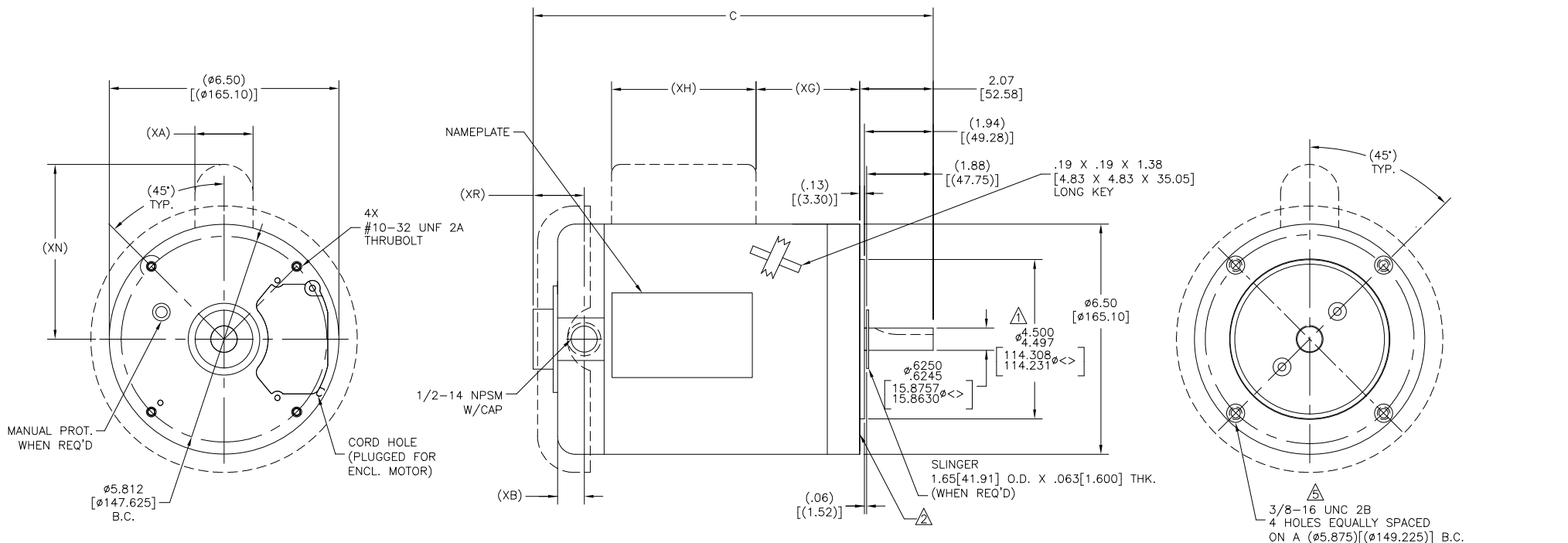
Electrical Type	Polyphase, Induction Type, Single Or Dual Voltage	Starting Method	Across The Line
Poles	2	Rotation	Reversible Counterclockwise
Mounting	Round	Drive End Bearing	Ball
Opp Drive End Bearing	Ball	Frame Material	Rolled Steel
Shaft Type	Keyed	Overall Length	9.54 in
Frame Length	4.50 in	Shaft Diameter	0.625 in
Shaft Extension	2.07 in		
Outline Drawing	189033-S01	Connection Drawing	18304024.PCX

This is an uncontrolled document once printed or downloaded and is subject to change without notice. Date Created:12/03/2021

ALL DIMENSIONS SHOWN IN PARENTHESIS ARE REFERENCE DIMENSIONS. ALL OTHER DIMENSIONS ARE TOLERANCED PER THE FOLLOWING CHART UNLESS OTHERWISE SPECIFIED.

"C" DIM = ±.055[1.397]
 SHAFT EXT. = ±.034[.864]
 LEAD LENGTHS = ±1.00[25.40]
 EXTENDED
 THRU-BOLTS = .050[1.270]
 ANGULAR DIMS. = ± 2'

CAPACITOR FOR CS/SP ONLY



GROUP	FRAME	TYPE	MOTOR			CAPACITOR COVER			
			C	XR	XB	XA	XG	XH	XN
-01	H56C	SC	9.17[232.92]	1.44[36.58]	.69[17.53]	-----	-----	-----	-----
	H56C	CS	9.17[232.92]	1.44[36.58]	.69[17.53]	1.64[41.66]	.81[20.57]	4.08[103.63]	4.87[123.70]
	H56C	SP	9.17[232.92]	1.44[36.58]	.69[17.53]	-----	-----	-----	-----
-02	J56C	SC	10.17[258.32]	1.44[36.58]	.69[17.53]	-----	-----	-----	-----
	J56C	CS	10.17[258.32]	1.44[36.58]	.69[17.53]	1.64[41.66]	1.81[45.97]	4.08[103.63]	4.87[123.70]
	J56C	SP	10.17[258.32]	1.44[36.58]	.69[17.53]	-----	-----	-----	-----
-03	Y56C	SC	9.54[242.32]	1.44[36.58]	.69[17.53]	-----	-----	-----	-----
	Y56C	CS	9.54[242.32]	1.44[36.58]	.69[17.53]	1.64[41.66]	1.19[30.23]	4.08[103.63]	4.87[123.70]
	Y56C	SP	9.54[242.32]	1.44[36.58]	.69[17.53]	-----	-----	-----	-----
-04	G56C	SC	11.04[280.42]	1.44[36.58]	.69[17.53]	-----	-----	-----	-----
	G56C	CS	11.04[280.42]	1.44[36.58]	.69[17.53]	1.64[41.66]	2.68[68.07]	4.08[103.63]	4.87[123.70]
	G56C	SP	11.04[280.42]	1.44[36.58]	.69[17.53]	-----	-----	-----	-----
-05	K56C	SC	10.54[267.72]	1.44[36.58]	.69[17.53]	-----	-----	-----	-----
	K56C	CS	10.54[267.72]	1.44[36.58]	.69[17.53]	1.64[41.66]	2.19[55.63]	4.08[103.63]	4.87[123.70]
	K56C	SP	10.54[267.72]	1.44[36.58]	.69[17.53]	-----	-----	-----	-----
-06	L56C	SC	11.29[286.77]	1.44[36.58]	.69[17.53]	-----	-----	-----	-----
	L56C	CS	11.29[286.77]	1.44[36.58]	.69[17.53]	1.64[41.66]	2.93[74.42]	4.08[103.63]	4.87[123.70]
	L56C	SP	11.29[286.77]	1.44[36.58]	.69[17.53]	-----	-----	-----	-----

- NOTES:
 1. PILOT DIAMETER IS CONCENTRIC WITH SHAFT CENTERLINE WITHIN .004[.102] TIR.
 2. FACE OF MOUNTING FLANGE IS PERPENDICULAR TO SHAFT CENTERLINE WITHIN .004[.102] TIR.
 3. SHAFT RUNOUT NOT TO EXCEED .002[.051] T.I.R.
 4. END PLAY NOT TO EXCEED .010[.254] T.I.R.
 5. DEPTH OF HOLES IN MOUNTING FLANGE ARE .75[19.05] FOR ALUM. AND .63[16.00] FOR CAST IRON.

DRAWING REVISION	REVISION BY	DATE	TOLERANCES UNLESS OTHERWISE SPECIFIED	DRAWN BY:		
F	D.SURYAWANSHI	12/02/2021	DEC. INCH mm ANGLE	RSH		
ECR-0214122	APPROVED BY	DATE	.X ±0.1 [±2.5] ±0.5	11-25-1997	DESCRIPTION OUTLINE	
ADDED NAMEPLATE			.XX ±0.02 [±0.51]	DATE:		
COPYRIGHT REGAL BELOIT AMERICA, INC. ALL RIGHTS RESERVED. PROPRIETARY AND CONFIDENTIAL INFORMATION - THIS DOCUMENT IS THE PROPERTY OF REGAL BELOIT AMERICA, INC. (OWNER) AND CONTAINS OWNER'S PROPRIETARY INFORMATION. ANY PERSON, CORPORATION OR OTHER ENTITY, DUPLICATED, AND/OR USED, EXCEPT BY RECEIVING IT TO AGREE THAT IT, AND/OR ANY PART OF IT, SHALL NOT BE DISCLOSED TO ANY PERSON, CORPORATION OR OTHER ENTITY, DUPLICATED, AND/OR USED, EXCEPT AS EXPRESSLY APPROVED IN WRITING IN ADVANCE BY OWNER. THIS DOCUMENT SHALL BE RETURNED TO OWNER UPON REQUEST. IT MAY BE SUBJECT TO CERTAIN RESTRICTIONS UNDER APPLICABLE EXPORT CONTROL LAWS AND REGULATIONS.			REMOVE BURRS & BREAK SHARP EDGES .003[.015] [Ø.076, .381] CORNER FILLETS .02 [51] MACHINED SURFACES ±0.0005 [±0.0127] INCH / mm 3/2 mm SHOWN IN [BRACKETS]	APPROVED BY: TJD 11-25-1997	MATERIAL PROCESS/FINISH	
			THIRD ANGLE PROJECTION	SIZE	DWG NO	SHEET
				C	189033	1