

# PRODUCT INFORMATION PACKET



Model No: H196

Catalog No: H196

2.0 HP General Purpose Pump Motor, 3 phase, 3600 RPM, 200-230/460 V, 56C Frame, TEFC  
General Purpose Pump Motors



Regal and Century are trademarks of Regal Rexnord Corporation or one of its affiliated companies.  
©2021 Regal Rexnord Corporation, All Rights Reserved. MC017097E





**Nameplate Specifications**

Output HP	2.0 Hp	Output KW	1.5 kW
Frequency	60 Hz	Voltage	200-230/460 V
Current	6.0-5.3/2.65 A	Speed	3450 rpm
Service Factor	1.15	Phase	3
Duty	Continuous	Insulation Class	B
Frame	G56C	Enclosure	Totally Enclosed Fan Cooled
Thermal Protection	None	Ambient Temperature	40 °C
UL	Recognized	CSA	Y
CE	N	Number of Speeds	1

**Technical Specifications**

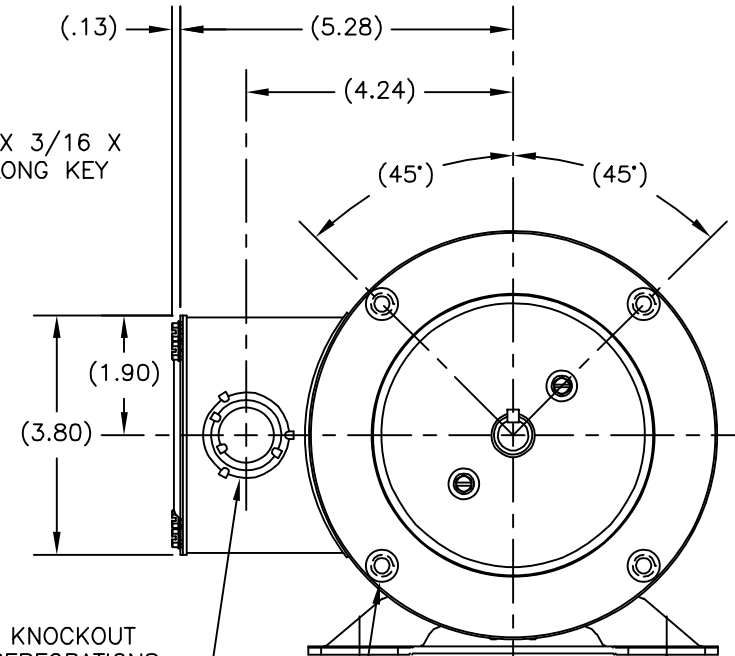
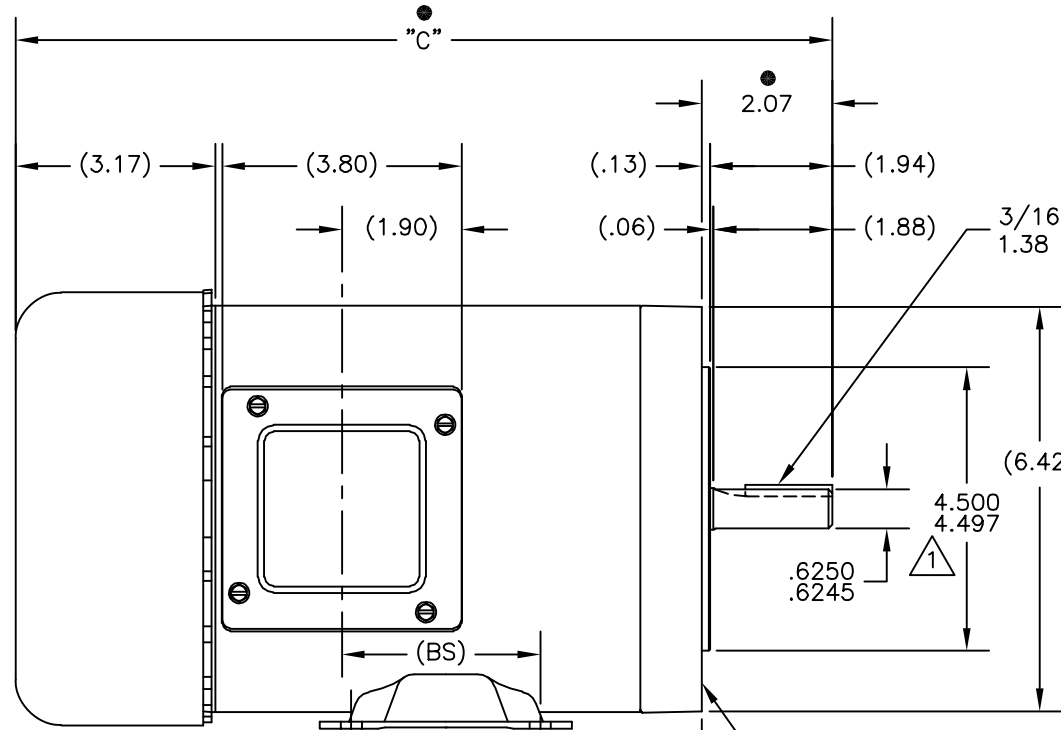
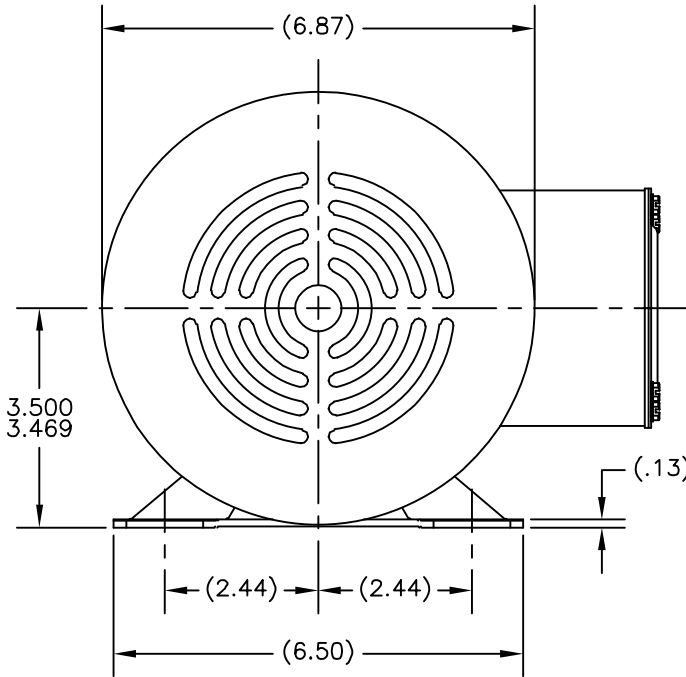
Electrical Type	Polyphase, Induction Type, Single Or Dual Voltage	Starting Method	Across The Line
Poles	2	Rotation	Reversible Counterclockwise
Mounting	Round	Drive End Bearing	Ball
Opp Drive End Bearing	Ball	Frame Material	Rolled Steel
Shaft Type	Keyed	Overall Length	12.21 in
Frame Length	6.00 in	Shaft Diameter	0.625 in
Shaft Extension	2.07 in		
Connection Drawing	18304024.PCX	Outline Drawing	18991603

This is an uncontrolled document once printed or downloaded and is subject to change without notice. Date Created:10/07/2021

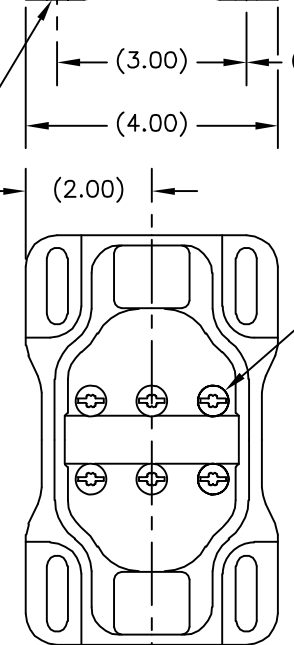
REV	ECO	REV BY	DATE	APPD	DATE
F	0006187	H. MARTINEZ	05-06-2009	J. ORTEGA	05-06-2009

ALL DIMENSIONS SHOWN IN PARENTHESIS ARE REFERENCE DIMENSIONS. ALL OTHER DIMENSIONS ARE TOLERANCED PER THE FOLLOWING CHART UNLESS OTHERWISE SPECIFIED.

"C" DIM. = +/- .055  
 SHAFT EXT. = +/- .034  
 LEAD LENGTHS = +/- 1.00  
 EXTENDED THRU-BOLTS = +/- .050  
 ANGULAR DIMS. = +/- 2 DEGS.



(4) MTG SLOTS (.34 X 1.22)



(6) TORQ-SLTD HEAD SELF TAPPING SCREWS (189156-01) TORQUE TO 30 INCH/LBS.

3/16 X 3/16 X 1.38 LONG KEY

3/8-16 UNC-2B ON A (5.875) DIA. B.C. TYP. 4 PLACES

KNOCKOUT PERFORATIONS (TO BE REMOVED BY CUSTOMER)

**CAUTION:**  
 BASE TO BE ATTACHED WITH SCREWS. DO NOT WELD.

- NOTES:
- PILOT DIAMETER IS CONCENTRIC WITH SHAFT CENTERLINE WITHIN .004 T.I.R.
  - FACE OF MOUNTING FLANGE IS PERPENDICULAR TO SHAFT CENTERLINE WITHIN .004 T.I.R.
  - SHAFT RUNOUT NOT TO EXCEED .002 T.I.R.
  - END PLAY NOT TO EXCEED .010 MEASURED WITH NO THRUST

● = CRITICAL DIMENSION

-05				
-04	SC	L56C	12.46	2.65
-03	SC	G56C	12.21	2.40
-02	SC	K56C	11.71	1.90
-01	SC	J56C	11.34	1.53
GROUP	TYPE	FRAME	"C"	(BS)

GEOMETRIC CHARACTERISTICS & SYMBOLS  
 □ FLATNESS  
 — STRAIGHTNESS  
 < ANGLARITY  
 ⊥ PERPENDICULARITY (SQUARENESS)  
 // PARALLELISM  
 ○ ROUNDNESS (CIRCULARITY)  
 ∅ CYLINDRICITY  
 △ PROFILE OF ANY SURFACE  
 ∩ PROFILE OF ANY LINE  
 ↑ RUNOUT  
 ⊕ TRUE POSITION  
 ⊙ CONCENTRICITY  
 = SYMMETRY

UNLESS OTHERWISE SPECIFIED DIM. TOLERANCES ARE AS FOLLOWS:  
 INCH X XX XXX XXXX  
 mm ±0.5 ±0.13 ±0.013  
 ANG. ±.50 DEG  
 REMOVE BURRS & BREAK SHARP EDGES:  
 INCH .003-.015 mm 0.1-0.4  
 CORNER FILLETS TO:  
 INCH .020 mm 0.5  
 MACHINE SURFACES:  
 INCH 125 mm 3.2  
 METRIC DIMS. SHOWN IN [BRACKETS]

DR BY: DAVHOL 10-27-1999  
 APPD:  
 THIRD ANGLE PROJECTION  
 EDS DATE EDS DATE  
 FORMAT REV F  
 CONFIDENTIAL: THIS DRAWING AND ITS INFORMATION ARE THE EXCLUSIVE AND CONFIDENTIAL PROPERTY OF A.O. SMITH CORP. AND ARE NOT TO BE DISCLOSED, DUPLICATED, DISTRIBUTED OR OTHERWISE USED WITHOUT THE WRITTEN CONSENT OF A.O. SMITH CORP.  
 -ALL RIGHTS RESERVED. ASME Y14.5M 1994

**ACSmith** **ELECTRICAL PRODUCTS COMPANY**  
 Innovation has a name. A DIVISION OF A. O. SMITH CORPORATION

DESCRIPTION: **OUTLINE**

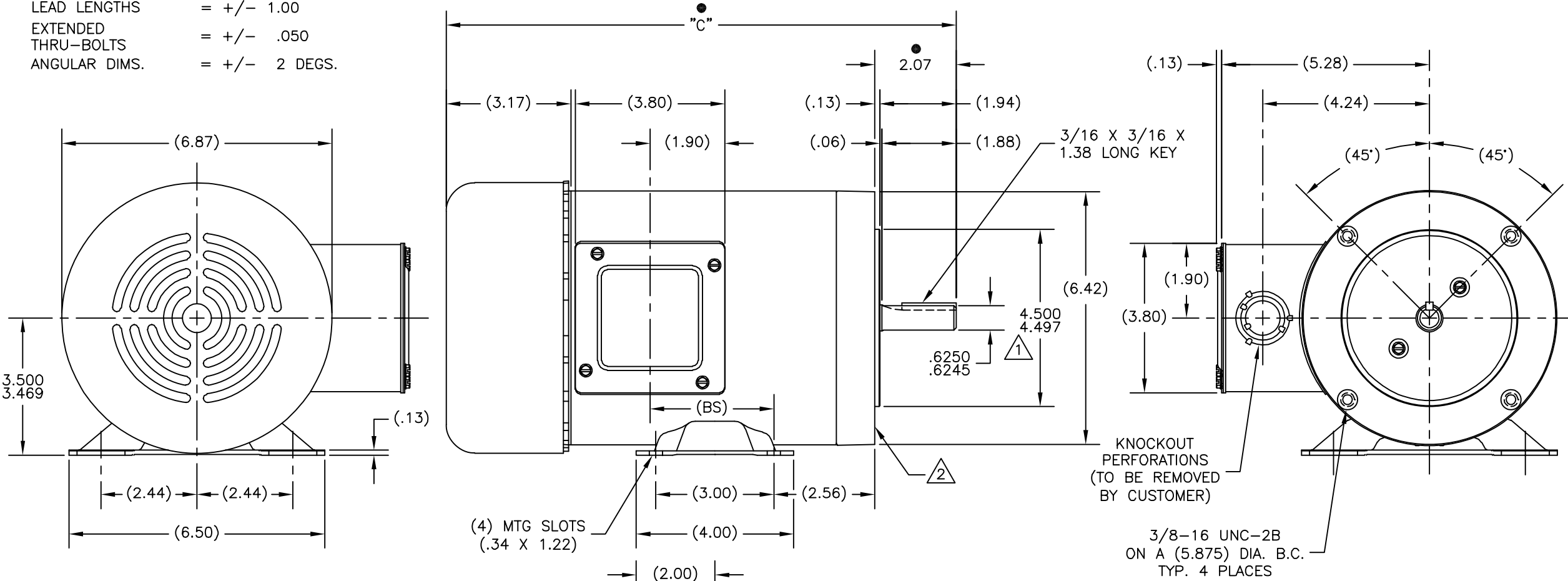
SIZE: C DWG NO: 195066

SCALE: NONE SHEET: 1

REVISION:	ECO	REVISADO POR:	FECHA:	APROBADO POR:	FECHA:
F	0006187	H. MARTINEZ	05-06-2009	J. ORTEGA	05-06-2009

ALL DIMENSIONS SHOWN IN PARENTHESIS ARE REFERENCE DIMENSIONS. ALL OTHER DIMENSIONS ARE TOLERANCED PER THE FOLLOWING CHART UNLESS OTHERWISE SPECIFIED.

- "C" DIM. = +/- .055
- SHAFT EXT. = +/- .034
- LEAD LENGTHS = +/- 1.00
- EXTENDED THRU-BOLTS = +/- .050
- ANGULAR DIMS. = +/- 2 DEGS.



**CAUTION:**  
BASE TO BE ATTACHED WITH SCREWS. DO NOT WELD.

(6) TORQ-SLTD HEAD SELF TAPPING SCREWS (189156-01)  
TORQUE TO 30 INCH/LBS.

- NOTES:
1. PILOT DIAMETER IS CONCENTRIC WITH SHAFT CENTERLINE WITHIN .004 T.I.R.
  2. FACE OF MOUNTING FLANGE IS PERPENDICULAR TO SHAFT CENTERLINE WITHIN .004 T.I.R.
  3. SHAFT RUNOUT NOT TO EXCEED .002 T.I.R.
  4. END PLAY NOT TO EXCEED .010 MEASURED WITH NO THRUST

-05				
-04	SC	L56C	12.46	2.65
-03	SC	G56C	12.21	2.40
-02	SC	K56C	11.71	1.90
-01	SC	J56C	11.34	1.53
GROUP	TYPE	FRAME	"C"	(BS)

CARACTERISTICAS DE GEOMETRIA Y SIMBOLOS

- PLANICIDAD
- RECTITUD
- ∠ ANGULARIDAD
- ⊥ PERPENDICULARIDAD (A ESCUADRA)
- // PARALELISMO
- REDONDEZ (CIRCULARIDAD)
- ⊘ CILINDRICIDAD
- △ PERFIL DE CUALQUIER SUPERFICIE
- ∧ PERFIL DE CUALQUIER LINEA
- ∩ VARIACION
- ⊕ POSICION REAL
- ◎ CONCENTRICIDAD
- = SIMETRIA

A MENOS QUE SE ESPECIFIQUE DE OTRA MANERA, LAS TOLERANCIAS DE LAS DIMS; SON LAS SIGUIENTES:

PULG ±.1 ±.02 ±.005 ±.0005  
mm ±0.5 ±0.13 ±0.013

ANG. ±.50 GRADOS

ELIMINAR REBABAS Y ORILLAS FILOSAS DEL BORDE.

PULG .003-.015 mm 0.1-0.4

FILETEAR ESQUINA: PULG .020 mm 0.5

MAQUINAR SUPERFICIES

PULG 125 mm 3.2

DIMS METRICAS MOSTRADAS [PARENTESIS]

DIBUJADO POR: DAVHOL 10-27-1999

APROBADO POR:

TERCER ANGULO DE PROYECCION

FECHA EDS: EDS DATE

REV. FORMATO: F

CONFIDENCIAL: ESTE DIBUJO Y SU INFORMACION SON PROPIEDAD DE USO EXCLUSIVO Y CONFIDENCIAL DE A.O.SMITH CORP. Y NO DEBERAN SER REVELADOS, DUPLICADOS, DISTRIBUIDOS O USARSE DE OTRA MANERA SIN EL CONSENTIMIENTO ESCRITO DE A.O. SMITH CORP. -TODOS LOS DERECHOS RESERVADOS. ASME Y14.5M 1994

**ACSmith** **ELECTRICAL PRODUCTS COMPANY**  
Innovation has a name. A DIVISION OF A. O. SMITH CORPORATION

DESCRIPCION: **OUTLINE**

TAMAÑO: C NUMERO DE DIBUJO: 195066

ESCALA: NONE HOJA: 1

