

PRODUCT INFORMATION PACKET



Model No: H204ES
Catalog No: H204ES

General Purpose Motor, 1/4 HP, 3 Ph, 60 Hz, 230/460 V, 1200 RPM, 56 Frame, DP



Regal and Century are trademarks of Regal Rexnord Corporation or one of its affiliated companies.
©2022 Regal Rexnord Corporation, All Rights Reserved. MC017097E





Nameplate Specifications

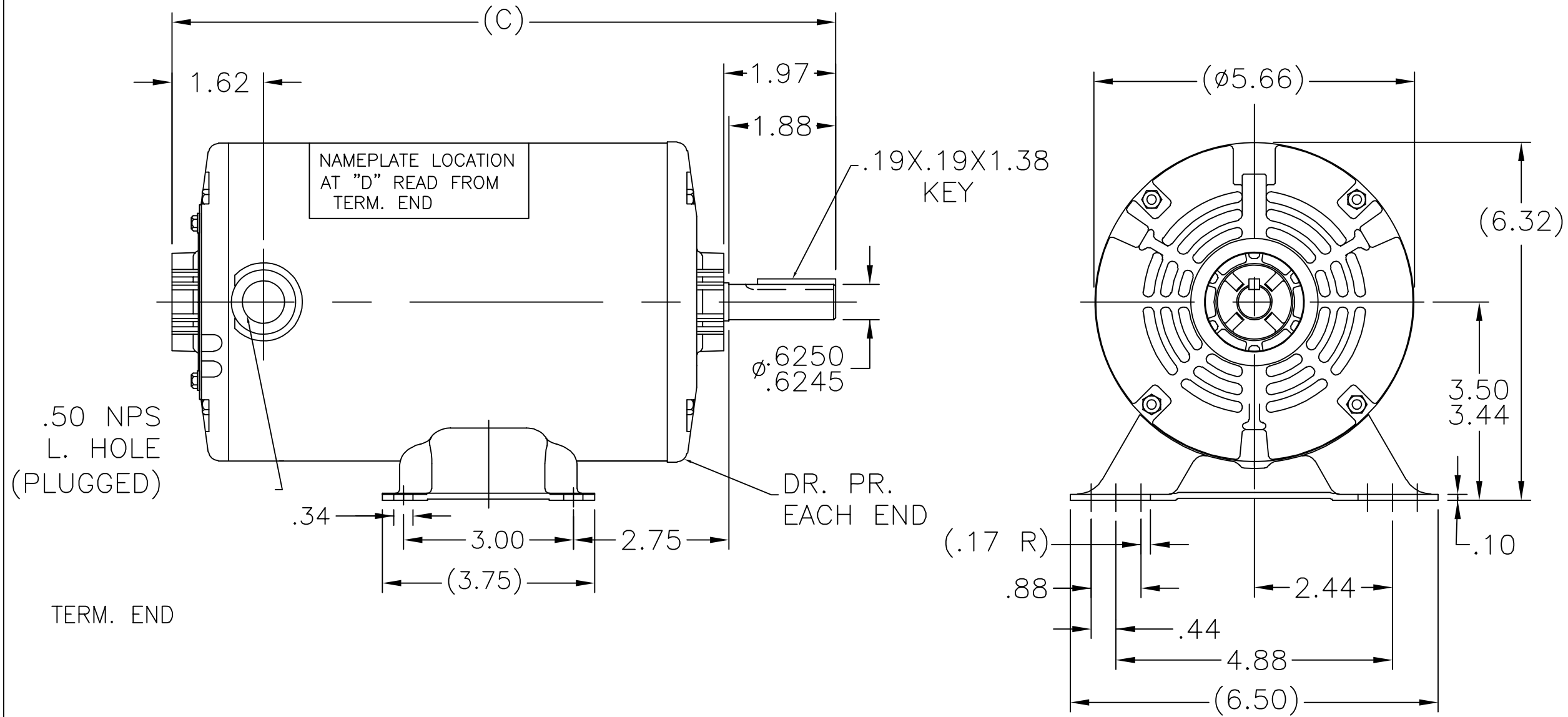
Output HP	1/4 Hp	Output KW	0.19 kW
Frequency	60 Hz	Voltage	230/460 V
Current	1.2/6 A	Speed	1140 rpm
Service Factor	1.35	Phase	3
Efficiency	67.5 %	Duty	Continuous
Insulation Class	B	Frame	56
Enclosure	Drip Proof	Thermal Protection	No Protection
Ambient Temperature	40 °C	UL	Recognized
CSA	Y	CE	Y
Number of Speeds	1		

Technical Specifications

Electrical Type	Three Phase	Starting Method	Across The Line
Poles	6	Rotation	Reversible
Mounting	Rigid Base	Drive End Bearing	Ball
Opp Drive End Bearing	Ball	Frame Material	Rolled Steel
Shaft Type	Keyed	Overall Length	11.22 in
Frame Length	7.38 in	Shaft Diameter	0.625 in
Shaft Extension	1.97 in		
Outline Drawing	SS404139	Connection Drawing	103014

This is an uncontrolled document once printed or downloaded and is subject to change without notice. Date Created:12/27/2022

SS404139



DASH	C	DASH	C	DASH	C
600	9.97	700	10.97	775	11.72
625	10.22	725	11.22	800	11.97
650	10.47	750	11.47	875	12.72

NO.		REVISION	BY & DATE	CHK	ANG	FINISH	DRAWING NO.		PAGE	OF	REV.
						RFP	CAD FILE SS404139	A	SS404139		
						DIST	WP				

THIS DRAWING IN DESIGN AND DETAIL IS OUR PROPERTY AND MUST NOT BE USED EXCEPT IN CONNECTION WITH OUR WORK ALL RIGHTS OF DESIGN AND INVENTION ARE RESERVED THIS IS AN ELECTRONICALLY GENERATED DOCUMENT - DO NOT SCALE THIS PRINT

TOLERANCES UNLESS SPECIFIED

DEC.	INCHES
.X	±.1
.XX	±.03
.XXX	±.005
.XXXX	±.0005
ANG	±7'30"

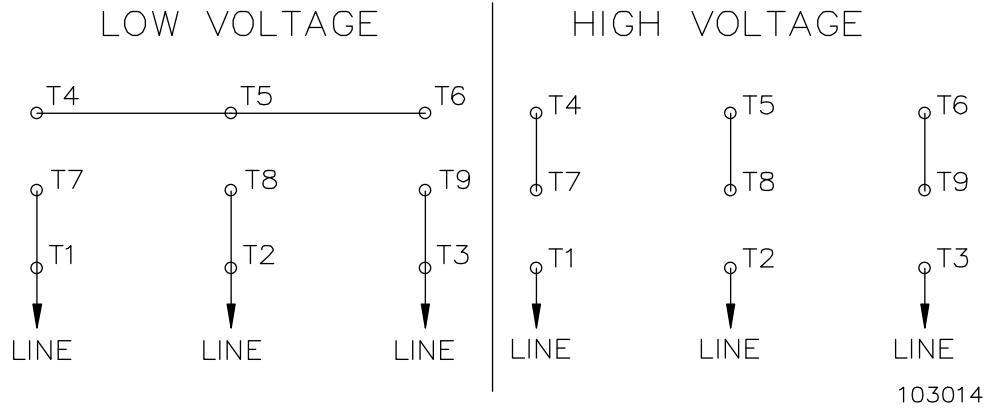


Regal Beloit America, Inc.

TITLE OUTLINE
56 FR. - DP.

MAT'L.


DRAWN	PVR	01/02/15
CHK	SM	01/02/15
APPD		
SCALE		3=8
REF		
FMF		
PREV		



TO REVERSE ROTATION, INTERCHANGE ANY TWO LINE LEADS

PLATE: 41365

SLOT: 22

		TOLERANCES UNLESS SPECIFIED				DRAWN TOM 08-14-1989		
		DEC.	INCHES			CHK	ML 08-14-1989	
			.X	±.1		APPD	GK 08-14-1989	
4	ADDED REVERSAL NOTE	SVL 10-14-2013	.XX	±.02	TITLE CONNECTION DIGRAM	SCALE	1=1	
3	REDRAWN IN AUTOCAD	TAT 09-16-2004	ML .XXX	±.005		REF		
2	REDRAWN - NEW FORMAT	TOM 08-14-1989	.XXXX	±.0005	MAT'L.	FMF		
NO.	REVISION	BY & DATE	CHK	ANG	±7'30"	FINISH	PREV	
THIS DRAWING IN DESIGN AND DETAIL IS OUR PROPERTY AND MUST NOT BE USED EXCEPT IN CONNECTION WITH OUR WORK ALL RIGHTS OF DESIGN AND INVENTION ARE RESERVED THIS IS AN ELECTRONICALLY GENERATED DOCUMENT - DO NOT SCALE THIS PRINT			RFP	CAD FILE 103014			SIZE	DRAWING NO. PAGE OF REV.
			DIST	WP		A	103014 4	