

# PRODUCT INFORMATION PACKET



Model No: H238

Catalog No: H238

General Purpose Motor, 1/3 HP, 3 Ph, 60 Hz, 200-230/460 V, 3600 RPM, B56 Frame, TENV



Regal and Century are trademarks of Regal Rexnord Corporation or one of its affiliated companies.

©2023 Regal Rexnord Corporation, All Rights Reserved. MC017097E





**Nameplate Specifications**

Phase	<b>3</b>	Output HP	<b>1/3 Hp</b>
Output KW	<b>0.25 kW</b>	Voltage	<b>200-230/460 V</b>
Speed	<b>3450 rpm</b>	Service Factor	<b>1.15</b>
Frame	<b>B56</b>	Enclosure	<b>Totally Enclosed Non Ventilated</b>
Thermal Protection	<b>No Protection</b>	Ambient Temperature	<b>40 °C</b>
Frequency	<b>60 Hz</b>	Current	<b>1.3-1.4/.7 A</b>
Duty	<b>Continuous</b>	Insulation Class	<b>B</b>
UL	<b>Recognized</b>	CSA	<b>Y</b>
CE	<b>N</b>	Number of Speeds	<b>1</b>

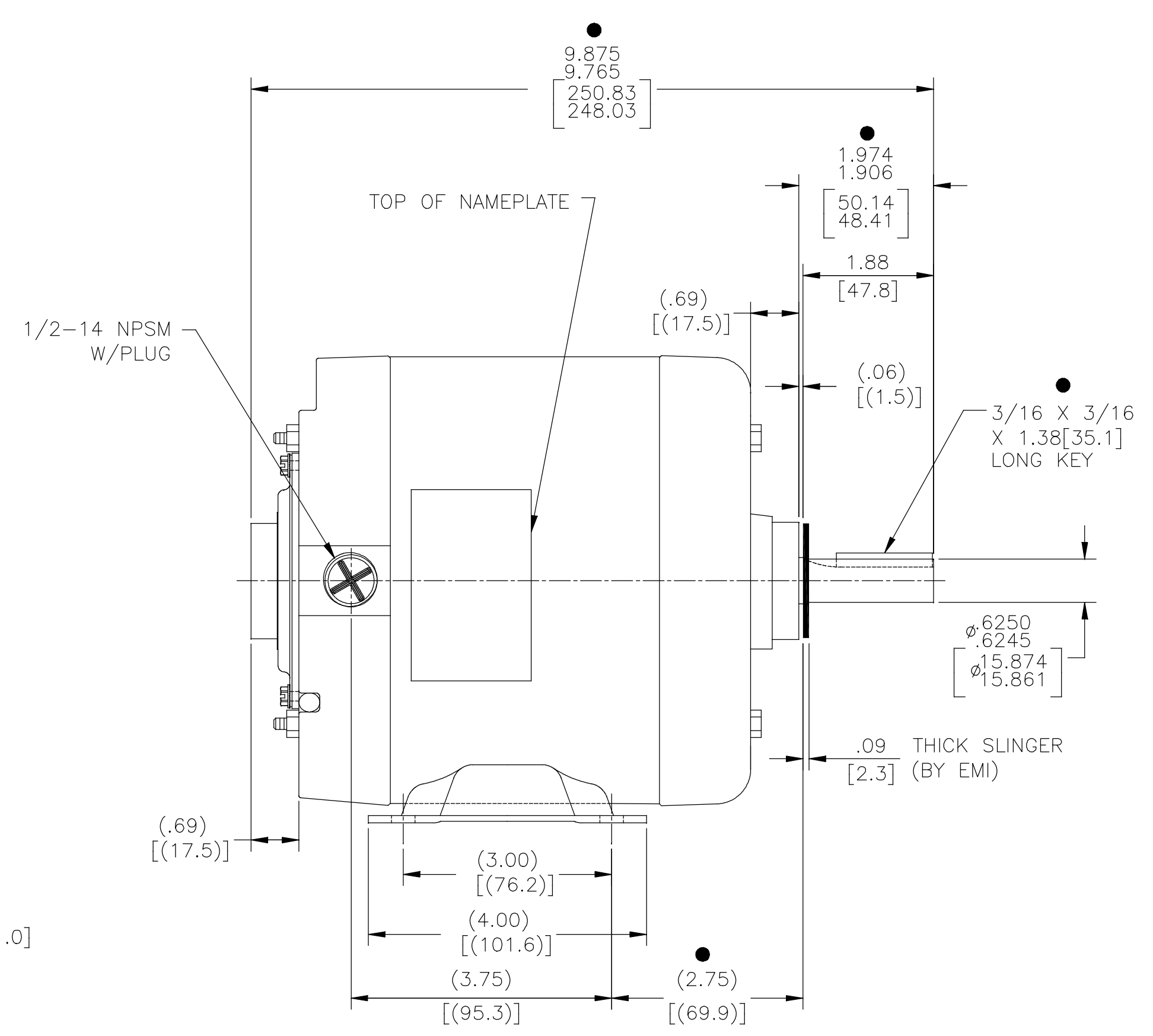
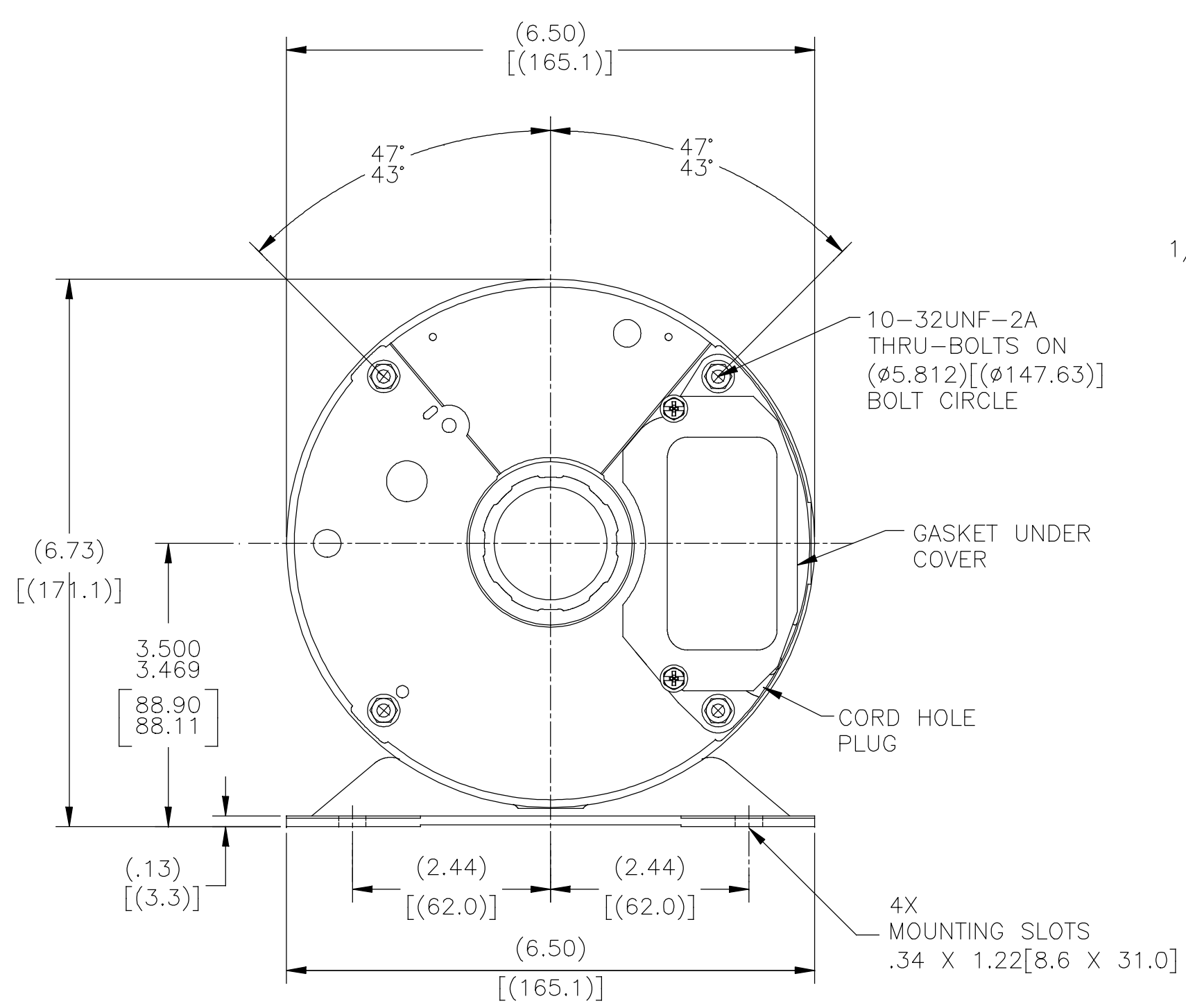
**Technical Specifications**

Electrical Type	<b>Polyphase, Induction Type, Single Or Dual Voltage</b>	Starting Method	<b>Across The Line</b>
Poles	<b>2</b>	Rotation	<b>Reversible Counterclockwise</b>
Mounting	<b>Rigid Base</b>	Drive End Bearing	<b>Ball</b>
Opp Drive End Bearing	<b>Ball</b>	Frame Material	<b>Rolled Steel</b>
Shaft Type	<b>Keyed</b>	Overall Length	<b>9.88 in</b>
Frame Length	<b>3.88 in</b>	Shaft Diameter	<b>0.625 in</b>
Shaft Extension	<b>1.974 in</b>		
Outline Drawing	<b>H238-S01</b>	Connection Drawing	<b>17050706.PCX</b>

This is an uncontrolled document once printed or downloaded and is subject to change without notice. Date Created:09/27/2023

FRAME	TYPE
B56	SC

REV	ECO	REV BY	DATE	APPD	DATE
R	ECO-0192434	D.SURYAWANSHI	09/21/2020		



● = CRITICAL DIMENSION

GEOMETRIC CHARACTERISTICS & SYMBOLS

- FLATNESS
- STRAIGHTNESS
- ∠ ANGULARITY
- ⊥ PERPENDICULARITY (SQUARENESS)
- // PARALLELISM
- ROUNDNESS (CIRCULARITY)
- ⊘ CYLINDRICITY
- △ PROFILE OF ANY SURFACE
- ⌒ PROFILE OF ANY LINE
- ↑ RUNOUT
- ⊕ TRUE POSITION
- ◎ CONCENTRICITY
- ≡ SYMMETRY

ASME Y14.5M 1994

UNLESS OTHERWISE SPECIFIED DIM. TOLERANCES ARE AS FOLLOWS:

INCH	±.1	±.02	±.005	±.0005
mm	±0.5	±0.13	±0.013	

ANG. ±.50 DEG  
REMOVE BURRS & BREAK SHARP EDGES:  
INCH .003-.015 mm 0.1-0.4

CORNER FILLETS TO:  
INCH .020 mm 0.5

MACHINE SURFACES:  
INCH 125 mm 3.2

METRIC DIMS. SHOWN IN [BRACKETS]

DR BY:	
APPD:	
THIRD ANGLE PROJECTION	EDS DATE 11-11-2011 FORMAT REV G
CONFIDENTIAL: THIS DRAWING AND ITS INFORMATION ARE THE EXCLUSIVE AND CONFIDENTIAL PROPERTY OF REGAL-BELOIT CORPORATION AND ARE NOT TO BE DISCLOSED, DUPLICATED, DISTRIBUTED OR OTHERWISE USED WITHOUT THE WRITTEN CONSENT OF REGAL-BELOIT CORPORATION. -ALL RIGHTS RESERVED.	

DESCRIPTION <b>MODEL-CFHP-56FR OUTLINE</b>	
SIZE C	DWG NO H238
SCALE NONE	SHEET 1