

PRODUCT INFORMATION PACKET



Model No: H257L

Catalog No: H257L

General Purpose Motor, 3/4 HP, 3 Ph, 60 Hz, 200-230/460 V, 1800 RPM, 56C Frame, TENV



Regal and Century are trademarks of Regal Rexnord Corporation or one of its affiliated companies.

©2022 Regal Rexnord Corporation, All Rights Reserved. MC017097E





Nameplate Specifications

Output HP	3/4 Hp	Output KW	0.56 kW
Frequency	60 Hz	Voltage	200-230/460 V
Current	2.2-2.4/1.2 A	Speed	1725/1425 rpm
Service Factor	1.15	Phase	3
Duty	Continuous	Insulation Class	B
Frame	56C	Enclosure	Totally Enclosed Non Ventilated
Thermal Protection	No Protection	Ambient Temperature	40 °C
UL	Recognized	CSA	Y
CE	N	Number of Speeds	1

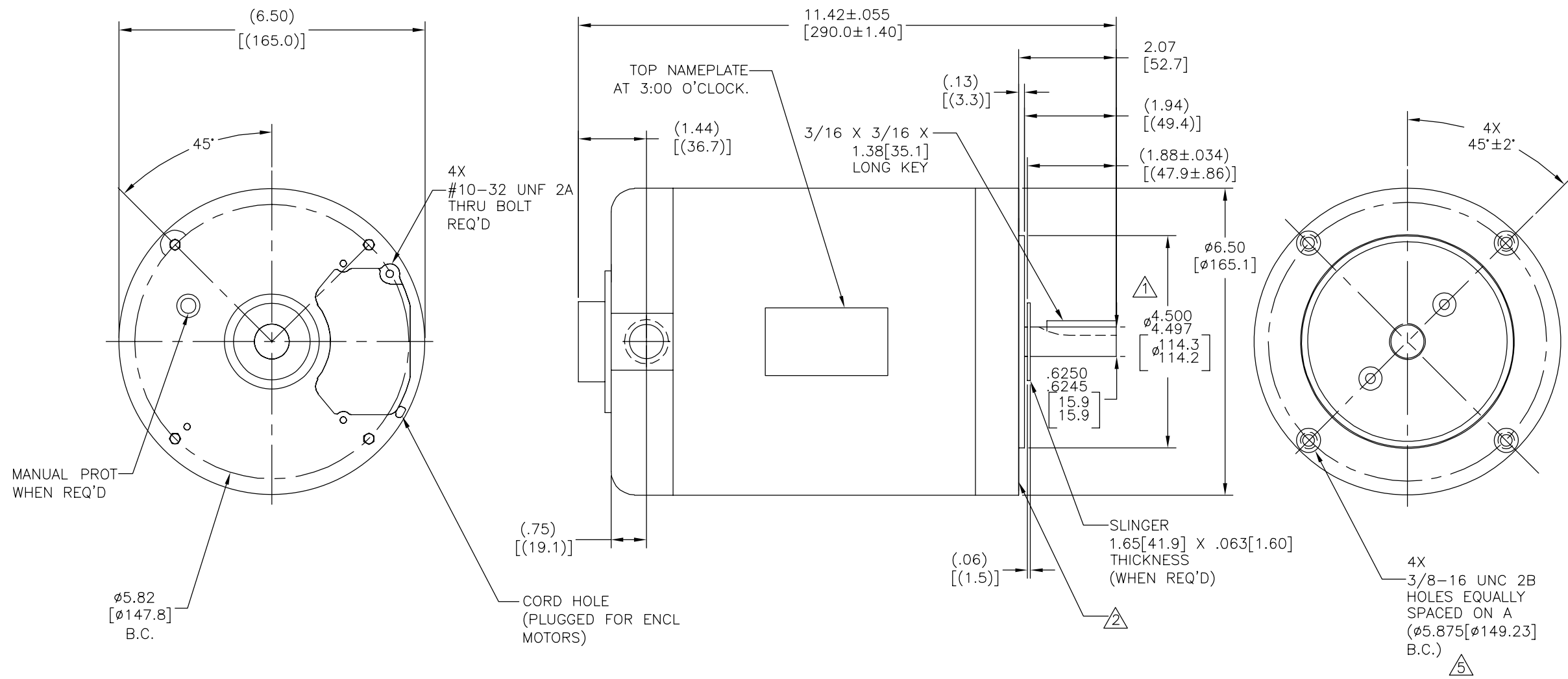
Technical Specifications

Electrical Type	Polyphase, Induction Type, Single Or Dual Voltage	Starting Method	Across The Line
Poles	4	Rotation	Reversible Counterclockwise
Mounting	Round	Drive End Bearing	Ball
Opp Drive End Bearing	Ball	Frame Material	Rolled Steel
Shaft Type	Keyed	Overall Length	11.42 in
Frame Length	6.38 in	Shaft Diameter	0.625 in
Shaft Extension	1.94 in		
Outline Drawing	H257L-S01	Connection Drawing	18304024.PCX

This is an uncontrolled document once printed or downloaded and is subject to change without notice. Date Created:12/27/2022

REV	ECO	REV BY	DATE	APPD	DATE
C	0042680	E.SINECIO	01-15-2014	J.RUIZ	01-15-2014

ALL DIMENSIONS SHOWN IN PARENTHESIS ARE REFERENCE DIMENSIONS.



NOTES:

- 1. PILOT DIAMETER IS CONCENTRIC WITH SHAFT ϕ WITHIN .004[.10] T.I.R.
- 2. FACE OF MOUNTING FLANGE IS PERPENDICULAR TO SHAFT ϕ WITHIN .004[.10] T.I.R.
- 3. SHAFT RUNOUT NOT TO EXCEED .002[.05] T.I.R.
- 4. END PLAY NOT TO EXCEED .010[.25] MEASURED WITH NO THRUST.
- 5. DEPTH OF HOLES IN MOUNTING FLANGE ARE .75[19.1] FOR ALUMINUM AND .63[16.0] FOR CAST IRON.

GEOMETRIC CHARACTERISTICS & SYMBOLS	
\square	FLATNESS
—	STRAIGHTNESS
\sphericalangle	ANGULARITY
\perp	PERPENDICULARITY (SQUARENESS)
\parallel	PARALLELISM
\bigcirc	ROUNDNESS (CIRCULARITY)
\oslash	CYLINDRICITY
\triangle	PROFILE OF ANY SURFACE
∇	PROFILE OF ANY LINE
\curvearrowright	RUNOUT
\oplus	TRUE POSITION
\odot	CONCENTRICITY
\equiv	SYMMETRY

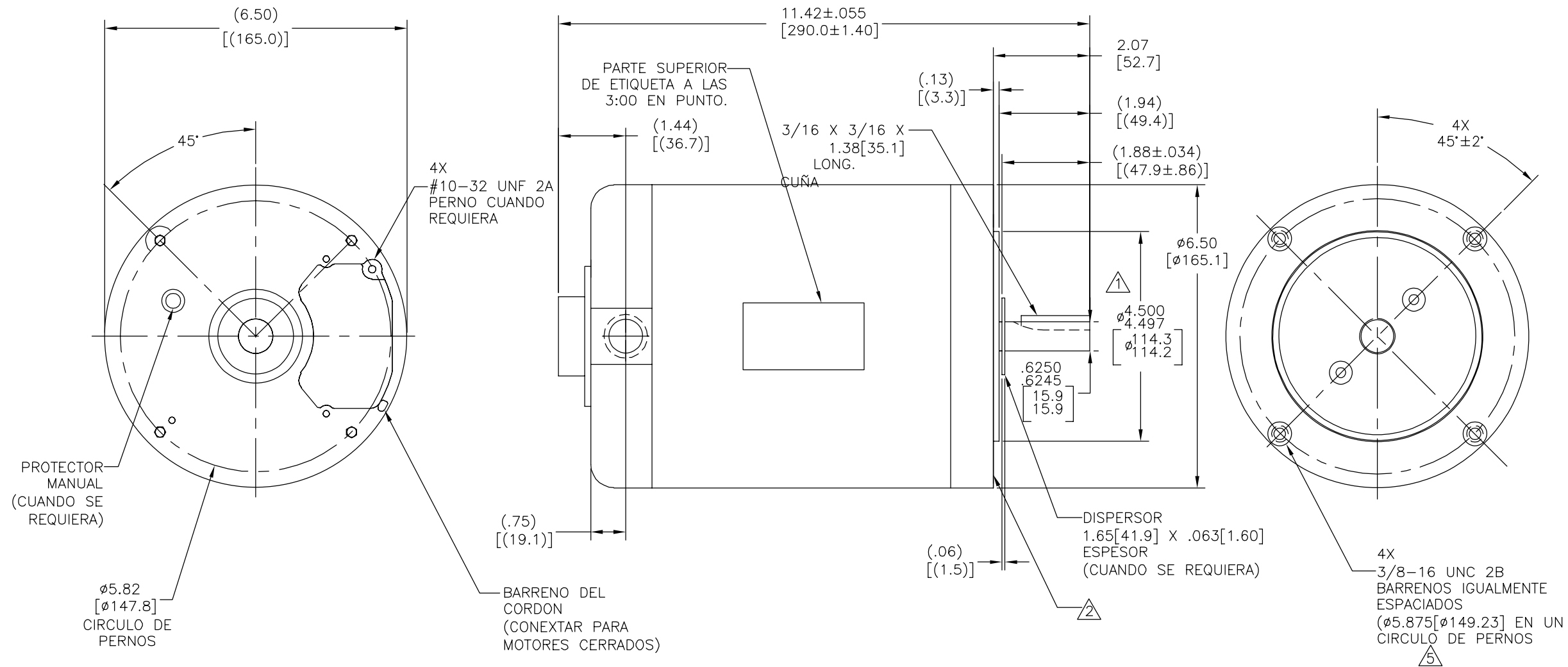
UNLESS OTHERWISE SPECIFIED DIM. TOLERANCES ARE AS FOLLOWS:	
INCH	$\pm .1$ XX $\pm .005$ XXX $\pm .0005$ XXXX
mm	± 0.5 ± 0.13 ± 0.013
ANG.	$\pm .50$ DEG
REMOVE BURRS & BREAK SHARP EDGES: INCH .003-.015 mm 0.1-0.4	
CORNER FILLETS TO: INCH .020 mm 0.5	
MACHINE SURFACES: INCH 125 mm 3.2	
METRIC DIMS. SHOWN IN [BRACKETS]	

DR BY:	YL	08-30-2010
APPD:	KG	08-31-2010
THIRD ANGLE PROJECTION	\oplus	EDS DATE 11-11-2011 FORMAT REV H
CONFIDENTIAL: THIS DRAWING AND ITS INFORMATION ARE THE EXCLUSIVE AND CONFIDENTIAL PROPERTY OF REGAL-BELOIT CORPORATION AND ARE NOT TO BE DISCLOSED, DUPLICATED, DISTRIBUTED OR OTHERWISE USED WITHOUT THE WRITTEN CONSENT OF REGAL-BELOIT CORPORATION. -ALL RIGHTS RESERVED.		

REGAL REGAL-BELOIT CORPORATION	
DESCRIPTION MODEL-PFHP-56FR OUTLINE	
SIZE C	DWG NO H257L
SCALE NONE	SHEET 1

REVISION:	ECO	REVISADO POR:	FECHA:	APROBADO POR:	FECHA:
C	0042680	E.SINECIO	01-15-2014	J.RUIZ	01-15-2014

TODAS LAS DIMENSIONES MOSTRADAS EN PARENTESIS SON DE REFERENCIA.



NOTAS:

1. DIAMETRO PILOTO ES CONCENTRICO CON LA ϕ DE LA FLECHA DENTRO DE .004[.10] L.T.I.
2. CARA DEL BORDE MONTADA ES PERPENDICULAR A LA ϕ DE LA FLECHA DENTRO DE .004[.10] L.T.I.
3. OSCILACION DE LA FLECHA NO DEBE EXCEDER DE .002[.05] L.T.I.
4. JUEGO AXIAL NO DEBE EXCEDER DE .010[.25] MEDIDO CON NO EMPUJE.
5. LA PROFUNDIDAD DE LOS BARRENOS EN EL BORDE SON DE .75[19.1] PARA ALUMINIO Y .63[16.0] PARA HIERRO FUNDIDO.

CARACTERISTICAS DE GEOMETRIA Y SIMBOLOS

- RECTITUD
- ∠ ANGULARIDAD
- ⊥ PERPENDICULARIDAD (A ESCUADRA)
- // PARALELISMO
- REDONDEZ (CIRCULARIDAD)
- ⊘ CILINDRICIDAD
- △ PERFIL DE CUALQUIER SUPERFICIE
- ∧ PERFIL DE CUALQUIER LINEA
- ∓ VARIACION
- ⊕ POSICION REAL
- ◎ CONCENTRICIDAD
- ≡ SIMETRIA

A MENOS QUE SE ESPECIFIQUE DE OTRA MANERA, LAS TOLERANCIAS DE LAS DIMS; SON LAS SIGUIENTES:

PULG	±.1	±.02	±.005	±.0005
mm	±0.5	±0.13	±0.013	

ANG. ± 50 GRADOS
ELIMINAR REBABAS Y ORILLAS FILOSAS DEL BORDE.
PULG .003-.015 mm 0.1-0.4
FILETEAR ESQUINA: PULG .020 mm 0.5
MAQUINAR SUPERFICIES
PULG 125 mm 3.2

DIBUJADO POR:	YL	08-30-2010
APROBADO POR:	KG	08-31-2010
TERCER ANGULO DE PROYECCION	⊕	FECHA EDS: 11-11-2011 REV. FORMATO: H
CONFIDENCIAL: ESTE DIBUJO Y SU INFORMACION SON PROPIEDAD DE USO EXCLUSIVO Y CONFIDENCIAL DE REGAL-BELOIT CORPORATION. Y NO DEBERAN SER REVELADOS, DUPLICADOS, DISTRIBUIDOS O USARSE DE OTRA MANERA SIN EL CONSENTIMIENTO ESCRITO DE REGAL-BELOIT CORPORATION. -TODOS LOS DERECHOS RESERVADOS.		

REGAL REGAL-BELOIT CORPORATION	
DESCRIPCION: MODEL-PFHP-56FR OUTLINE	
TAMAÑO: C	NUMERO DE DIBUJO: H257L
ESCALA: NONE	HOJA: 1